

THE CONTRACTOR SHALL NOTIFY THE WATER DISTRICT 72 HOURS PRIOR TO STARTING CONSTRUCTION.

THE CONTRACTOR SHALL BE RESPONSIBLE FOR THE LOCATION OF THE EXISTING 6" CAST IRON WATER LINE AND SHALL POT HOLE THE MAIN IN THE PRESENCE OF WATER DISTRICT PERSONNEL.

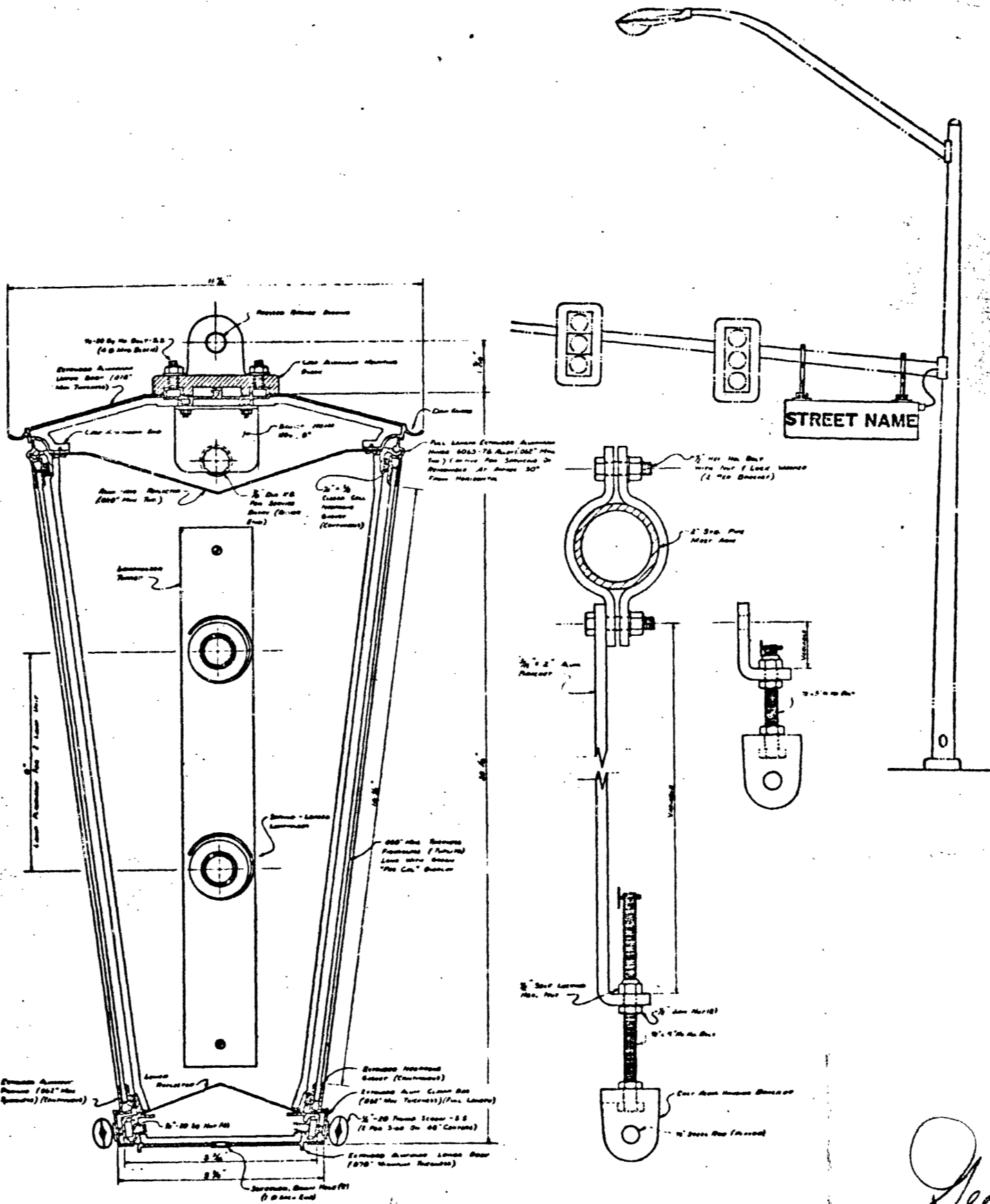
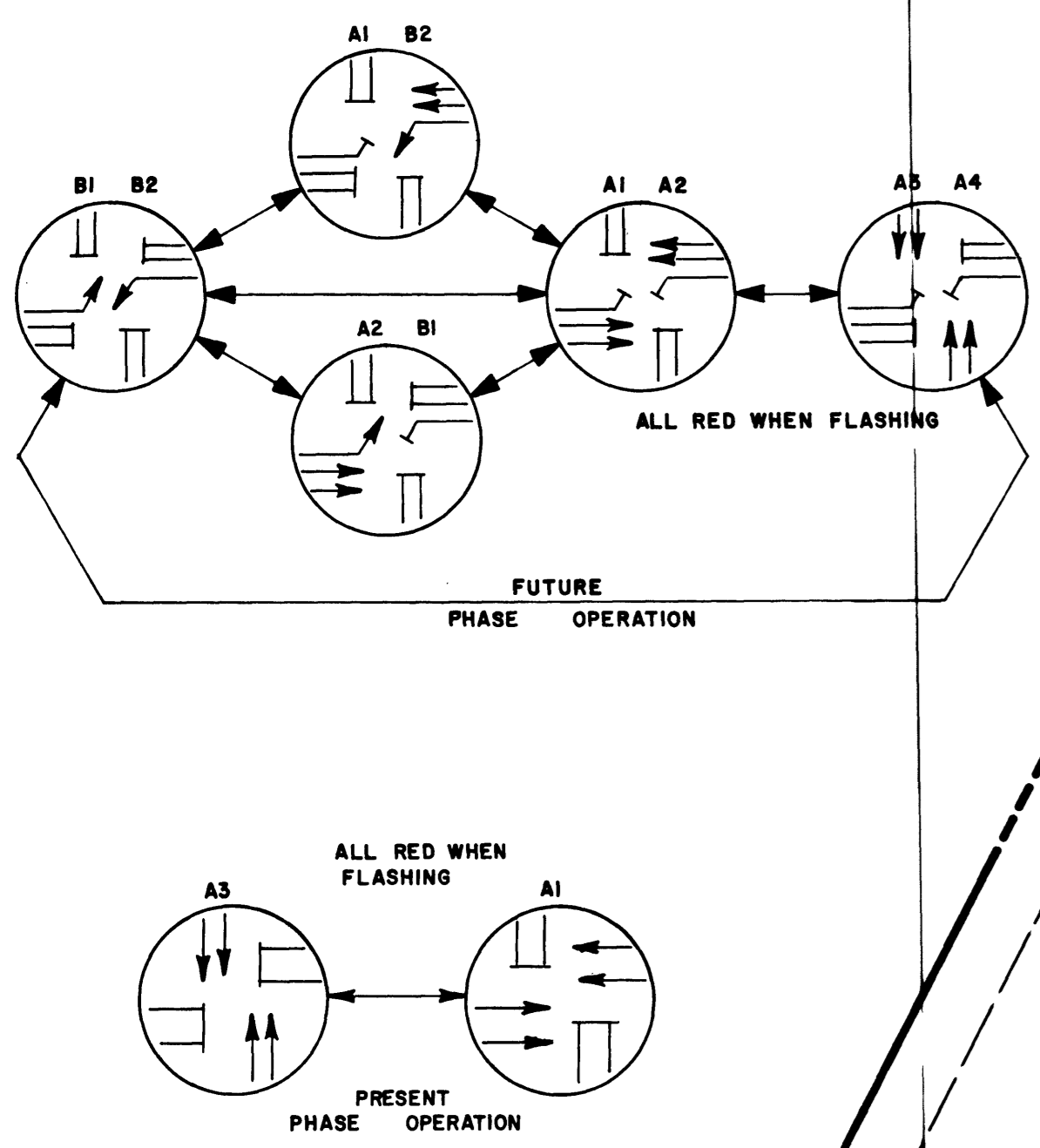
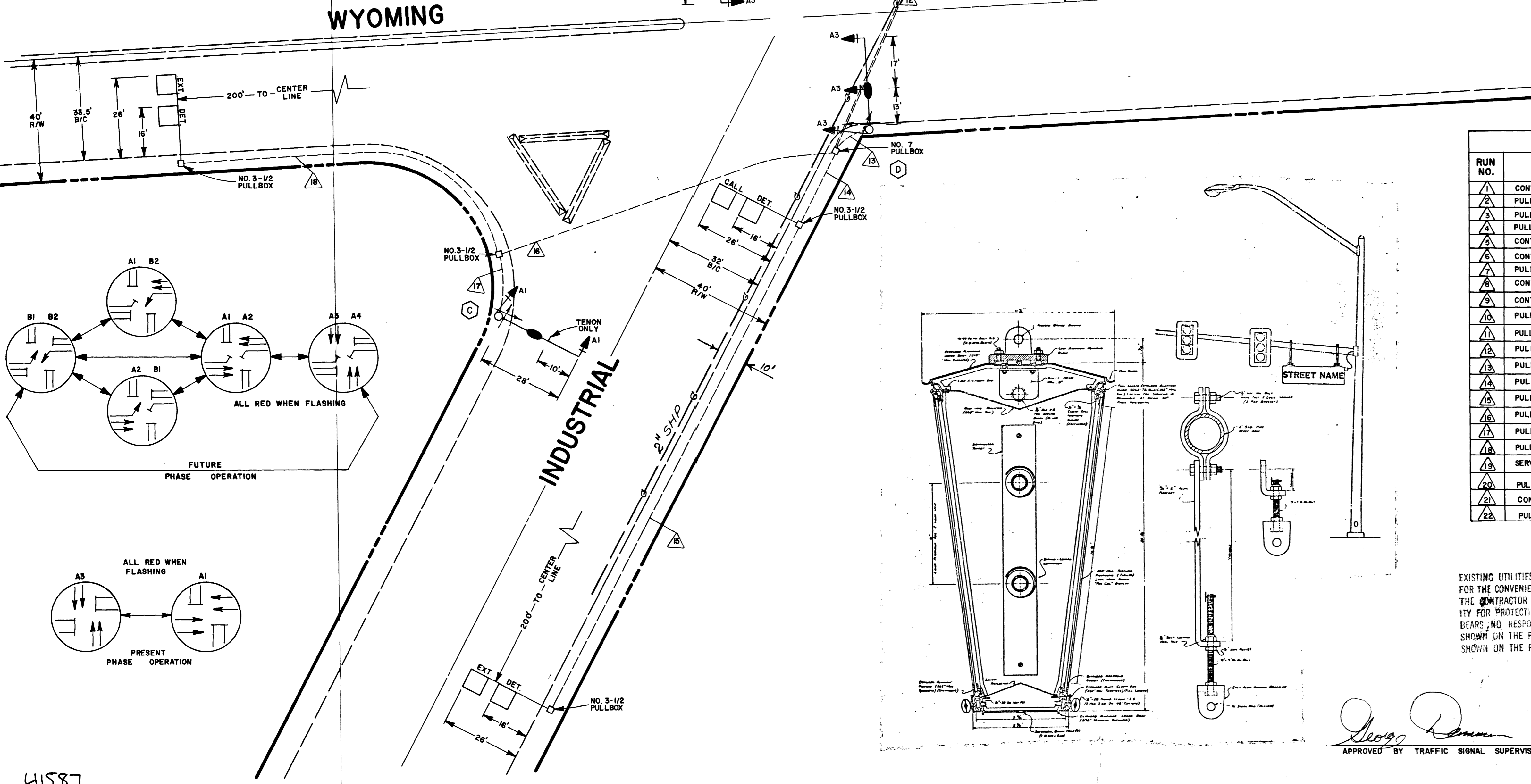
- NOTE: CHECK CONDUIT & CABLE SCHEDULE FOR CONDUIT, CABLE & WIRE SIZE.
- LINE SIDE OF METER TO BE WIRED WITH THREE #2 A.W.G. LOAD SIDE SHALL BE WIRED WITH FOUR #4 A.W.G. (THREE BLACK & ONE WHITE).
 - THE ROUTING AND TERMINATION OF CONDUITS & THE PLACING OF POLES & CABINETS SHALL BE AS INDICATED ON PLANS. ALL CHANGES SHALL BE APPROVED BY THE TRAFFIC ENGINEER.
 - SIGNAL CABLE SHALL BE A 20 CONDUCTOR #14 A.W.G. CABLE I.M.S.A. SPEC. 20-1.
 - LOOP CABLE SHALL BE ONE TWISTED PAIR OF #12 A.W.G. CABLE I.M.S.A. 19-1.
 - ALL SIGNAL LENSE SHALL BE 12".
 - LUMINAIRE SHALL BE 400 WATTS HIGH PRESSURE SODIUM WITH TYPE III DISTRIBUTION AND INDIVIDUAL P.E. CONTROL AND BUILT IN BALLAST (120 V.A.C.).
 - CONTROLLER SHALL BE HOUSED IN A TYPE "P" CABINET WITH EXHAUST FAN AND THERMOSTAT CONTROL.
 - CABINET SHALL BE PAINTED WHITE INSIDE AND OUT.
 - EACH LOOP DETECTOR LEAD-IN REPRESENTS A SEPARATE AMPLIFIED UNIT REQUIRED (SEVEN REQUIRED).
 - ALL NECESSARY AMPLIFIER UNITS, MODULES, LIGHT CONTROL UNITS, SWITCHES, FLASHERS, ETC. SHALL BE WIRED IN CABINET TO ACTIVATE THE TWO PHASE OPERATION AS SHOWN IN DIAGRAM.
 - SERVICE SHALL HAVE 1-60 AMP. SINGLE POLE BREAKER FOR SIGNAL AND 2-40 AMP. SINGLE POLE BREAKERS FOR STREET LIGHTS. SERVICE SHALL BE A 100 AMP. PADMOUNT.
 - EACH STREET LIGHT LUMINAIRE SHALL BE FUSED IN CABINET USING IN LINE FUSEHOLDERS.
 - ALL CABLE AND WIRING SHALL BE INSTALLED TERMINAL TO TERMINAL NO SPLICES ALLOWED.
 - POLES A,B,C,D, SHALL HAVE INTERNALLY ILLUMINATED STREET NAME SIGNS INSTALLED. THE SIGNS SHALL BE WIRED TO THE LUMINAIRE PHOTO CELL FOR CONTROL.
 - STREET NAME SIGNS ON POLES "A" & "D" SHALL READ INDUSTRIAL RD, ON POLES "B" & "C" SHALL READ WYOMING AVE.
 - ALL SIGNAL POLES SHALL CONFORM TO C.L.V. STANDARD SPEC. 404.406 & 404.402.
 - INTERCONNECT CABLE FOR RAILROAD PRE-EMPTION SHALL BE 6 CONDUCTOR #12 A.W.G.

POLE SCHEDULE

NO	GA.	TYPE	SIGNAL ARM		QUADRANT	TYPE	MOUNTING	QUAD	PUSH BUTTON
			LENGTH	QUAD LENGTH					
A	XX	3	28'	3	15'	MA (2) M-2			2 LT 3 RT
B	XX	4	26'	4	15'	MA (2) M-2 B-5T			
C	XX	2	28'	2	15'	MA M-2 B-5T			1 LT 2 RT
D	XX	1	30'	1	15'	MA (2) M-2 B-5T			1 RT 4 LT
E	II	1-A	-	-	-	TOP A-1			
F	II	404.411	-	-	-				3 LT 4 RT

CONDUIT - CABLE SCHEDULE

RUN NO.	FROM	TO	CONDUIT SIZE	SIGNAL CABLE DET. TO CONDUIT	LEADS LIGHTING CIR. TO CONDUIT	INTERCONNECT	SERVICE
1	CONTROLLER	PULLBOX	2"	X	X	X	
2	PULLBOX	POLE "B"	2"	X	X		
3	PULLBOX	PULLBOX (3 EA #14 A.W.G. THWN 5/64 INSULATION)	1"		XX		
4	PULLBOX	PULLBOX	1"		X		
5	CONTROLLER	PULLBOX (3 EA #14 A.W.G. THWN 5/64 INSULATION)	2"	X	X	X	
6	CONTROLLER	PULLBOX	2"	X	XX	X	
7	PULLBOX	POLE "A"	2"	X	X		
8	CONTROLLER	PULLBOX	2"	X	XX	X	
9	CONTROLLER	POLE "E"	2"	X			
10	PULLBOX	PULLBOX	1"		X		
11	PULLBOX	PULLBOX	2"	X	XX	X	
12	PULLBOX	PULLBOX	2"	X	X	X	
13	PULLBOX	POLE "D"	2"	X	X		
14	PULLBOX	PULLBOX	1"		XX		
15	PULLBOX	PULLBOX	1"		X		
16	PULLBOX	PULLBOX	2"	X	X	X	
17	PULLBOX	POLE "C"	2"	X	X		
18	PULLBOX	PULLBOX	1"		X		
19	SERVICE POLE	CONTROLLER	2"				X
20	PULLBOX	PULLBOX (SEE NOTE 18) EXT. 1-1/4"					EXISTING
21	CONTROLLER	PULLBOX	1"		XX		
22	PULLBOX	POLE "F"	1"	3 EA - NO. 14 A.W.G. THWN 5/64 INSULATION			



EXISTING UTILITIES ARE LOCATED ON THE PLANS FOR THE CONVENIENCE OF THE CONTRACTOR ONLY. THE CONTRACTOR SHALL BEAR FULL RESPONSIBILITY FOR PROTECTION OF UTILITIES AND THE CITY BEARS NO RESPONSIBILITY FOR UTILITIES NOT SHOWN ON THE PLANS OR NOT IN THE LOCATION SHOWN ON THE PLANS.

APPROVED BY TRAFFIC SIGNAL SUPERVISOR *George [Signature]* DATE 4/21/76

CONTRACT DRAWING

REV NO. DESCRIPTION BY DATE APPROVAL

CITY OF LAS VEGAS NEVADA
DEPARTMENT OF PUBLIC WORKS
TRAFFIC ENGINEERING DIVISION

WYOMING AVE & INDUSTRIAL RD

W.O. NO. 7701 SCALE 1"=20' DATE 4-20-76 DRAWING NO. 208-V220

APPROVED BY TRAFFIC ENGINEER *[Signature]* DATE 4-21-76 FILE NO.

APPROVED BY DIRECTOR OF PUBLIC WORKS *[Signature]* DATE 4/21/76 SHEET 1 OF 1