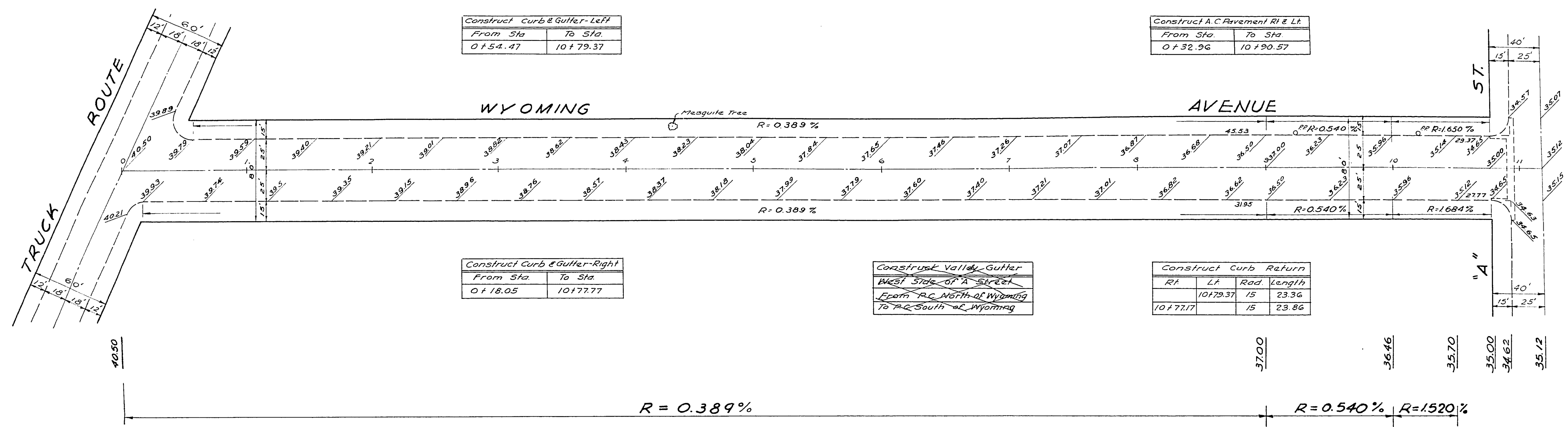


1-1-20



Construct Curb & Gutter-Left	
From Sta.	To Sta.
0+54.47	10+79.37

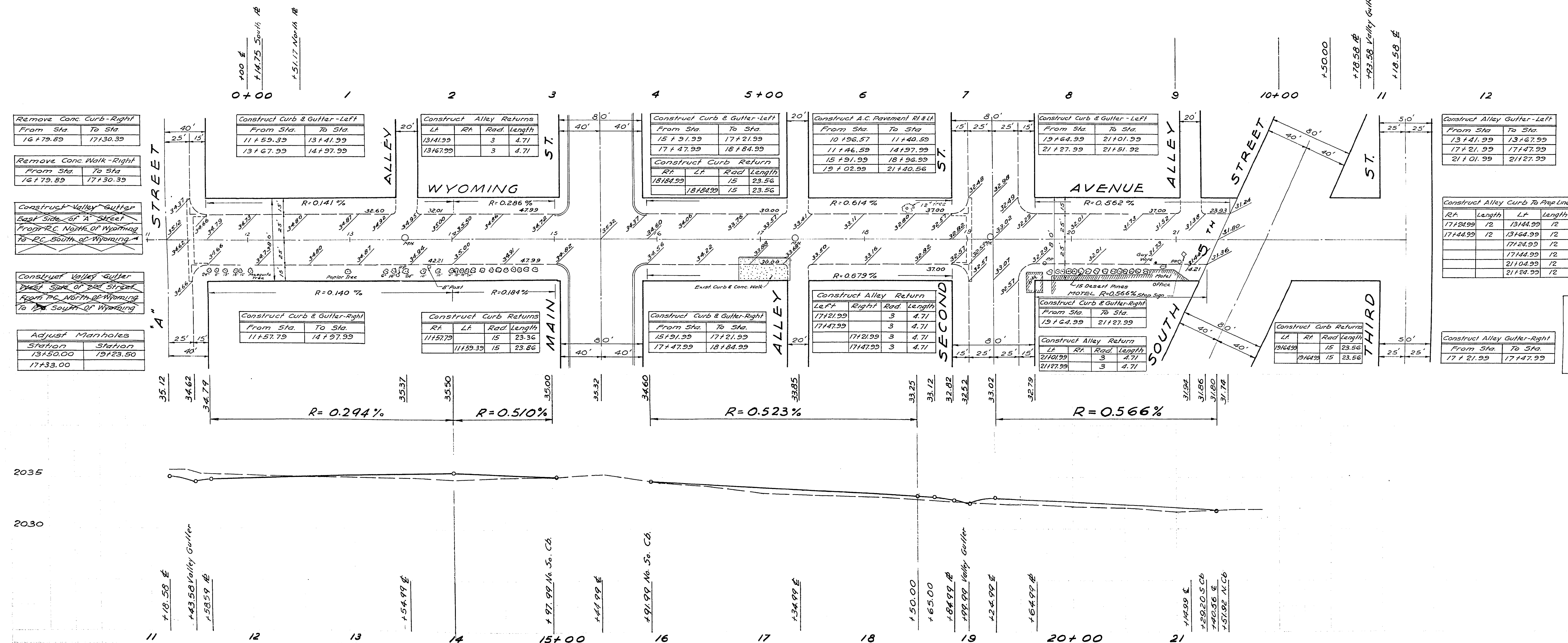
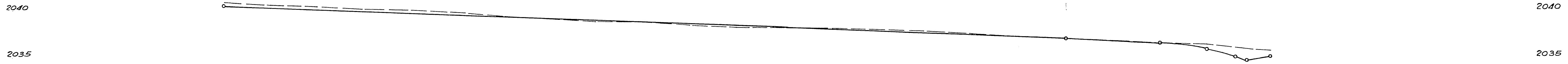
Construct A.C. Pavement RI & LI	
From Sta.	To Sta.
0+32.96	10+90.57

Construct Curb & Gutter-Right	
From Sta.	To Sta.
0+18.05	10+77.77

Construct Valley Gutter	
West Side of "A" Street	
From PC North of Wyoming	
To PC South of Wyoming	
RF	LA Rad Length
10+77.77	15 23.86

Construct Curb Return		
RF	LA	Rad Length
10+77.77	15	23.86

Summary of Quantities (This Sheet)	
ITEM	QUANTITY
A.C. Pavement	10,663.35 Sq. Yds.
Curb & Gutter	3,595.35 Lin Ft.
Returns	188.68 Lin Ft.
Valley Gutter	NONE
Alley Gutter	247.12 Sq. Ft.
Alley Curb	133.48 Lin Ft.
Manholes to be Adjusted	3 Units
Conc. Curb & Gutter to be Removed	50.50 Lin Ft.
Conc. Work to be Removed	39.27 Sq. Yds.



Remove Conc. Curb-Right	
From Sta.	To Sta.
16+79.89	17+30.39

Remove Conc. Walk-Right	
From Sta.	To Sta.
16+79.89	17+30.39

Construct Valley Gutter	
East Side of "A" Street	
From PC North of Wyoming	
To PC South of Wyoming	
RF	LA Rad Length
17+30.39	15 23.86

Adjust Manholes	
Station	Station
18+50.00	19+23.50
17+33.00	

Construct Curb & Gutter-Left	
From Sta.	To Sta.
11+59.39	13+41.99
13+67.99	14+97.99

Construct Alley Returns		
LA	RA	Rad Length
13+41.99	3	4.71
13+67.99	3	4.71

Construct Curb & Gutter-Left	
From Sta.	To Sta.
15+91.99	17+21.99
17+47.99	18+84.99

Construct Curb Return	
RF	LA Rad Length
18+84.99	15 23.56

Construct A.C. Pavement RI & LI	
From Sta.	To Sta.
10+96.57	11+40.59
11+46.59	14+97.99
15+91.99	18+96.99
19+02.99	21+40.56

Construct Curb & Gutter-Left	
From Sta.	To Sta.
19+64.99	21+01.99
21+27.99	21+51.92

Construct Alley Gutter-Left	
From Sta.	To Sta.
13+41.99	13+67.99
17+21.99	17+47.99
21+01.99	21+27.99

Construct Alley Curb to Prop Line			
RF	Length	LA	Length
17+24.99	12	13+41.99	12
17+44.99	12	17+24.99	12
		17+44.99	12
		17+64.99	12
		21+04.99	12
		21+24.99	12

Construct Alley Gutter-Right	
From Sta.	To Sta.
17+21.99	17+47.99

SCALE 1"=50'
Level Book 756 Pg. 36-38
B.M. Mueller F.P. 51W
Corn. "A" & Utah Ave.
Elev. 2037.376