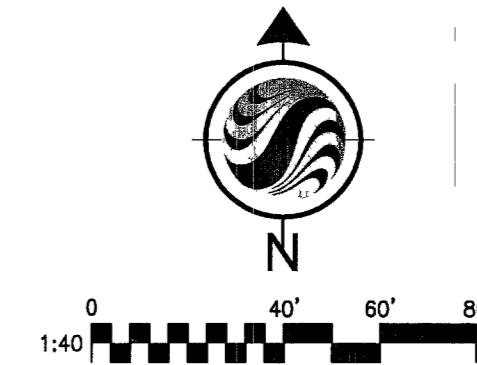


NOTES

1. REAR PROPERTY CORNERS WILL BE SET WITH A REBAR AND ALUMINUM CAP STAMPED "PLS 14420" UNLESS A BLOCK WALL IS BUILT, THEN A NAIL AND BRASS TAG STAMPED "PLS 14420" WILL BE SET IN THE BLOCK WALL TO DENOTE THE SIDE PROPERTY LINE. FRONT PROPERTY CORNERS WILL BE WITNESSED BY A SAWCUT IN THE TOP OF CURB ON THE SIDE PROPERTY LINES, PROLONGATED.
2. DIRECT VEHICULAR ACCESS TO TENAYA WAY AND ELKHORN ROAD THROUGH COMMON LOTS FROM ADJUTING RESIDENTIAL LOTS IS PROHIBITED.

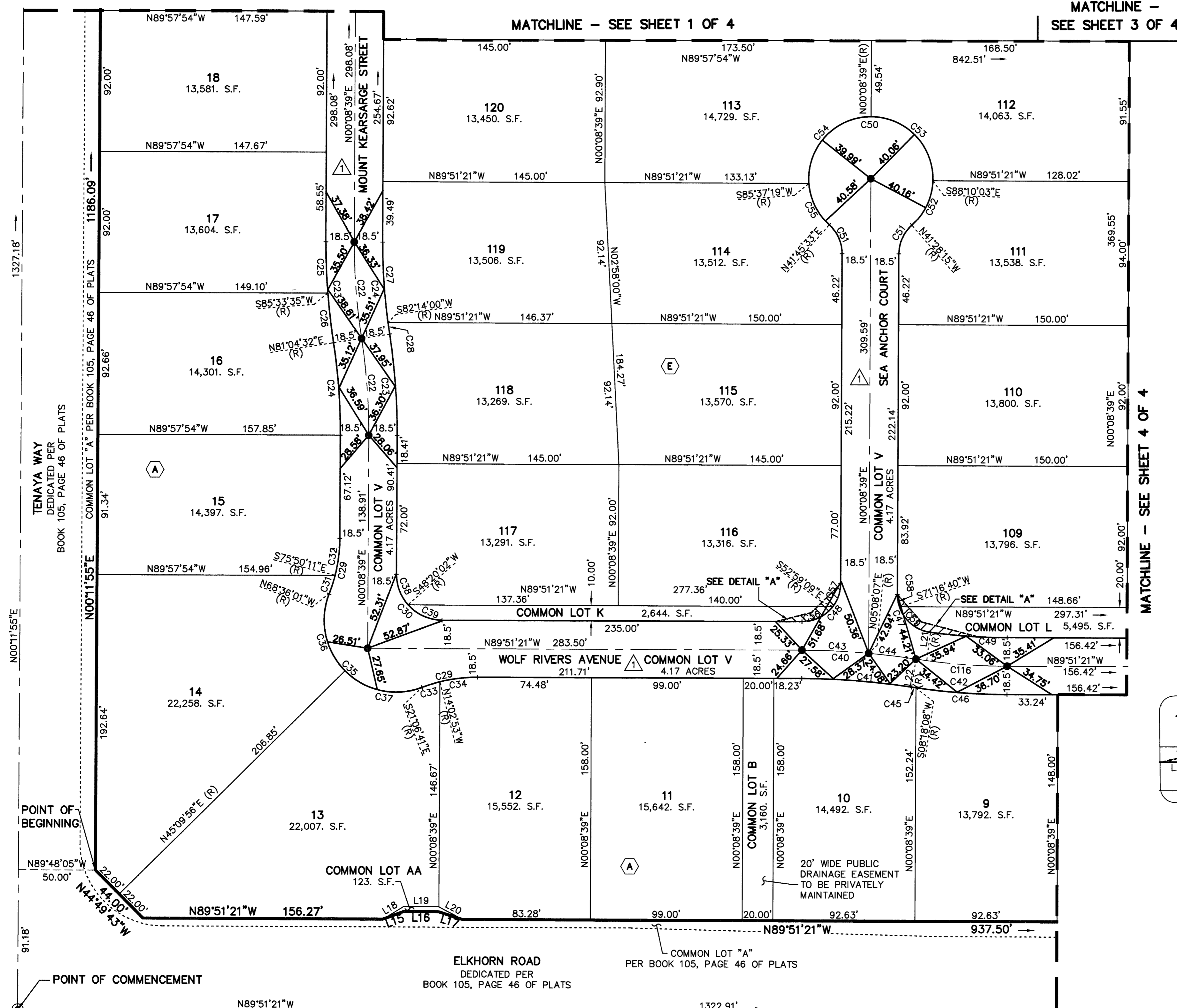
MONUMENT TIE MAP FOR WYETH RANCH - UNIT 2 A COMMON INTEREST COMMUNITY

A PORTION OF THE SOUTH HALF (S 1/2) OF THE SOUTHEAST QUARTER (SE 1/4) OF SECTION 15,
TOWNSHIP 19 SOUTH, RANGE 60 EAST, M.D.M., CITY OF LAS VEGAS, CLARK COUNTY, NEVADA



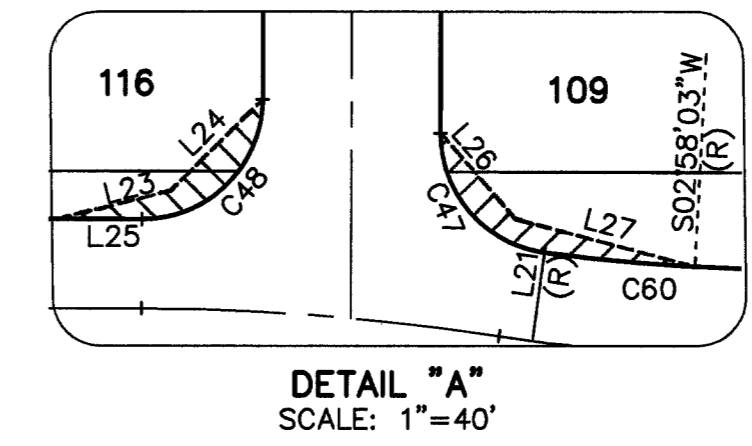
LEGEND

- SUBDIVISION BOUNDARY LINE
- SECTION LINE
- ALIQUOT PART LINE
- LOT LINE
- RIGHT-OF-WAY LINE/LIMITS OF PRIVATE STREET
- STREET CENTERLINE
- EASEMENT LINE
- MATCHLINE
- FOUND MONUMENTATION AS DESCRIBED
- △ BRASS CAP IN CONCRETE STAMPED "PLS 14420" TO BE SET PER BOOK 105, PAGE 46 OF PLATS
- SET 5/8-INCH REBAR AND 1-1/2-INCH ALUMINUM CAP, STAMPED "W. STOUT PLS 14420" WITH REFERENCE MONUMENTS IN TOP OF PLATS
- 1 LOT NUMBER
- △ TOTAL RESIDENTIAL LOTS IN SUBDIVISION = 83
- △ TOTAL COMMON LOTS IN SUBDIVISION = 11
- (A) BLOCK NUMBER
- (R) RADIAL BEARING
- ▨ SIGHT VISIBILITY RESTRICTION ZONE TO BE PRIVATELY MAINTAINED
- ▨ NO LANDSCAPING OR SIGHT RESTRICTION IMPROVEMENTS TALLER THAN 24 INCHES ALLOWED WITHIN THE AREAS SHADED
- △ PRIVATE STREET, P.U.E., CITY OF LAS VEGAS SEWER EASEMENT AND PUBLIC DRAINAGE EASEMENT TO BE PRIVATELY MAINTAINED



LINE	BEARING	DISTANCE
L15	S69°51'24"W	14.42'
L16	N89°51'21"W	23.00'
L17	N72°12'58"W	16.50'
L18	N58°31'02"E	15.78'
L19	N89°51'21"W	23.09'
L20	N62°05'53"W	17.77'
L21	N07°41'10"E	18.50'
L22	N08°41'36"E	18.50'
L23	N75°31'24"E	23.77'
L24	N45°08'39"E	26.87'
L25	N89°51'21"W	17.00'
L26	N41°05'06"W	23.75'
L27	N75°12'51"W	38.60'

CURVE	DELTA	RADIUS	LENGTH	TANGENT
C22	9°04'07"	400.00'	63.31'	31.72'
C23	9°04'07"	418.50'	66.24'	33.19'
C24	9°04'07"	381.50'	60.38'	30.25'
C25	4°35'04"	418.50'	33.49'	16.75'
C26	4°29'03"	418.50'	32.75'	16.38'
C27	7°54'39"	381.50'	52.67'	26.38'
C28	1°09'28"	381.50'	7.71'	3.85'
C29	21°15'20"	100.00'	37.10'	18.76'
C30	90°00'00"	30.00'	47.12'	30.00'
C31	71°4'10"	100.00'	12.63'	6.32'
C32	14°01'10"	100.00'	24.47'	12.30'
C33	7°03'48"	100.00'	12.33'	6.17'
C34	14°11'32"	100.00'	24.77'	12.45'
C35	132°30'40"	47.00'	108.70'	106.84'
C36	66°14'03"	47.00'	54.33'	30.66'
C37	66°16'37"	47.00'	54.37'	30.68'
C38	41°48'37"	30.00'	21.89'	11.46'
C39	48°11'23"	30.00'	25.23'	13.42'
C40	8°32'57"	500.00'	74.60'	37.37'
C41	8°32'57"	481.50'	71.84'	35.99'
C42	8°32'57"	418.50'	62.44'	31.28'
C43	4°59'28"	500.00'	43.56'	21.79'
C44	3°33'29"	500.00'	31.05'	15.53'
C45	0°23'28"	418.50'	2.86'	1.43'
C46	8°09'29"	418.50'	59.59'	29.84'
C47	82°27'29"	25.00'	35.98'	21.91'
C48	90°00'00"	25.00'	39.27'	25.00'
C49	7°32'31"	381.50'	50.22'	25.14'
C50	276°46'12"	40.50'	195.64'	35.98'
C51	48°23'06"	25.00'	21.11'	11.23'
C52	46°41'48"	40.50'	33.01'	17.48'
C53	91°41'18"	40.50'	64.81'	41.71'
C54	94°31'20"	40.50'	66.81'	43.83'
C55	43°51'46"	40.50'	31.00'	16.31'
C56	53°07'48"	25.00'	23.18'	12.50'
C57	36°52'12"	25.00'	16.09'	8.33'
C58	18°51'59"	25.00'	8.23'	4.15'
C59	63°35'31"	25.00'	27.75'	15.50'
C60	4°43'07"	381.50'	31.42'	15.72'
C116	8°32'57"	400.00'	59.68'	29.90'



DETAIL "A"
SCALE: 1"=40'

30 NOVEMBER 2005
103098
JOB# 88147028

FOUND BRASS CAP IN WELL BOX STAMPED "PLS 8895" PER FILE 115, PAGE 13 OF SURVEYS

058-4699-2
WLB
SHEET 2 OF 4