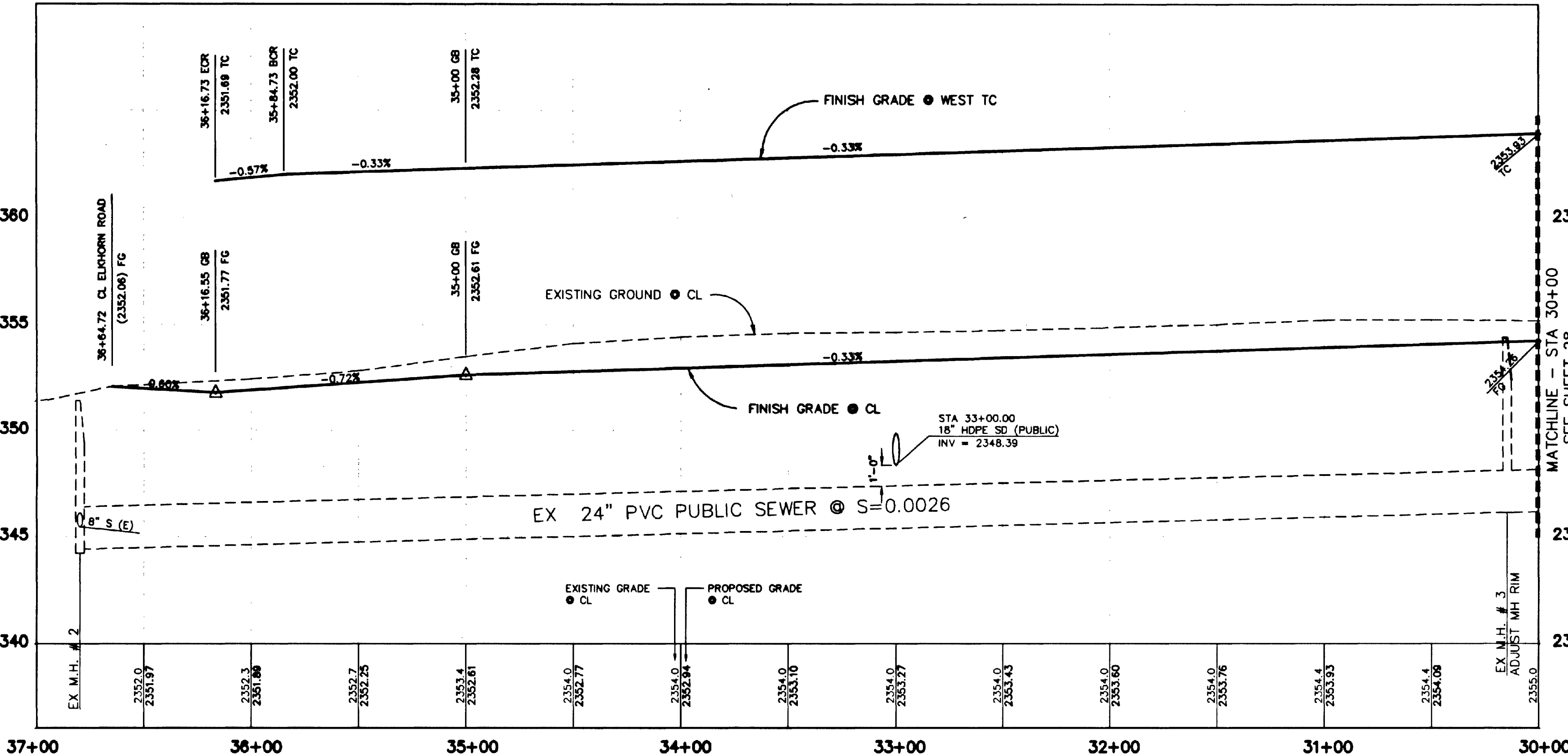
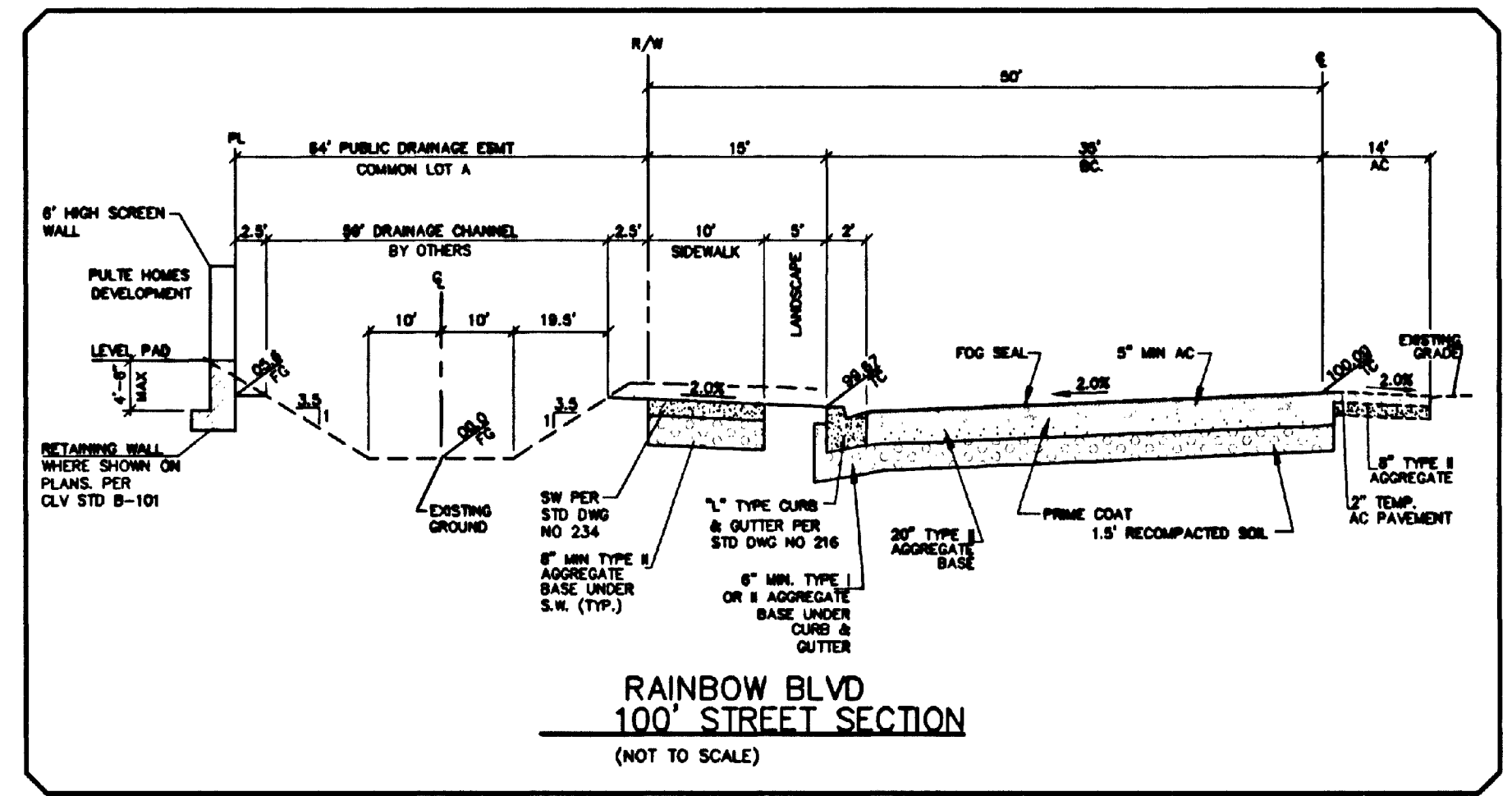
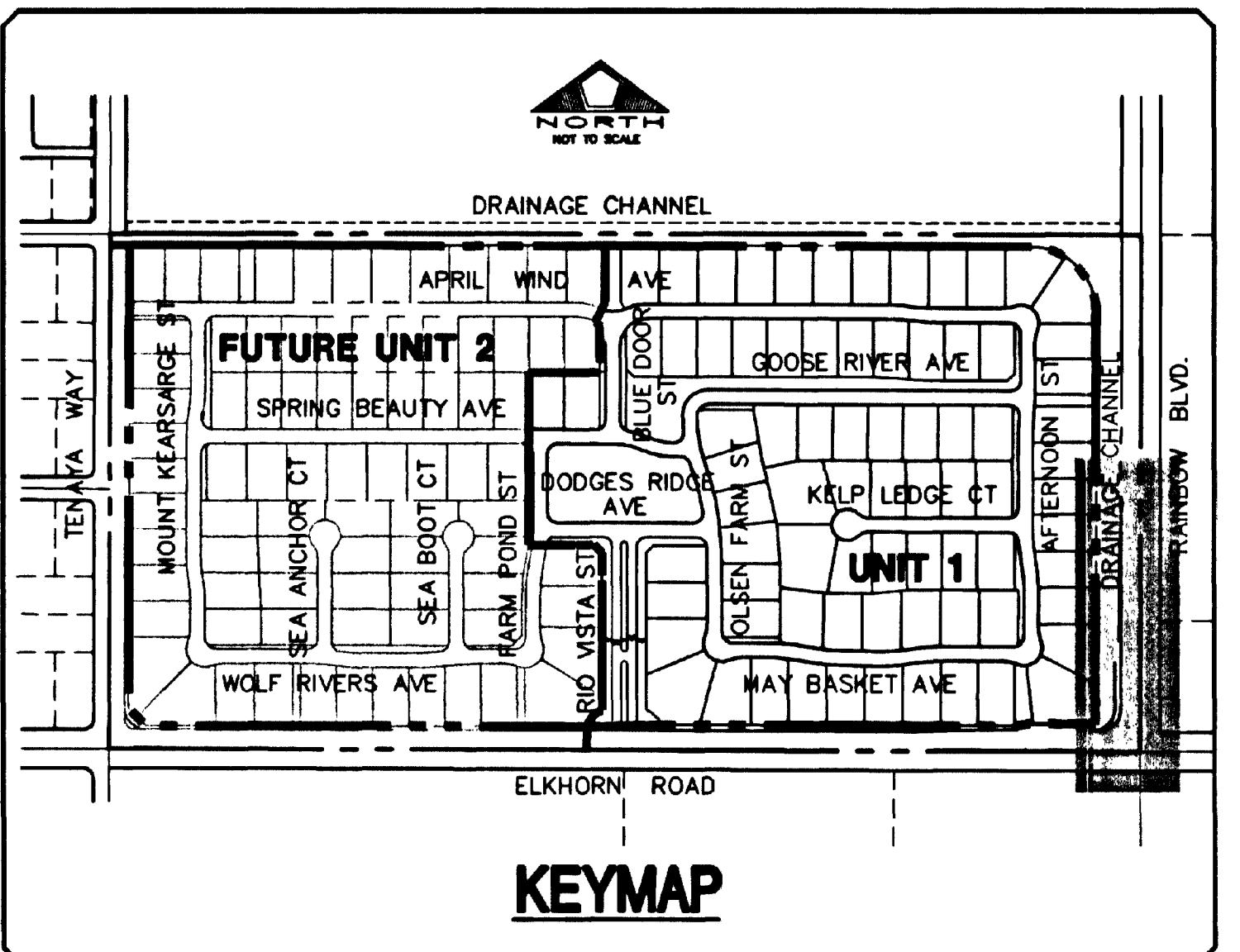


No.	Radius	Delta	Length	Tangent
C1	30.00'	89°59'20"	47.12'	29.99'

RAINBOW BOULEVARD (PUBLIC) PLAN



RAINBOW BOULEVARD (PUBLIC) PROFILE

HDPE PIPE CONSTRUCTION NOTE:
 CONTRACTOR SHALL PROVIDE 30" MINIMUM COVER OVER HDPE PIPE PRIOR TO VEHICLE LOADING DURING CONSTRUCTION. TRENCH WIDTH MUST BE WIDE ENOUGH TO ACCOMMODATE COMPACTION EQUIPMENT. SEE MANUFACTURER'S GUIDELINES (PRODUCT NOTE 3.115) AND ASTM D2321. CONTRACTOR SHALL NOT USE HYDRO-HAMMER TYPE COMPACTIONERS OVER PIPE TRENCH AREA.

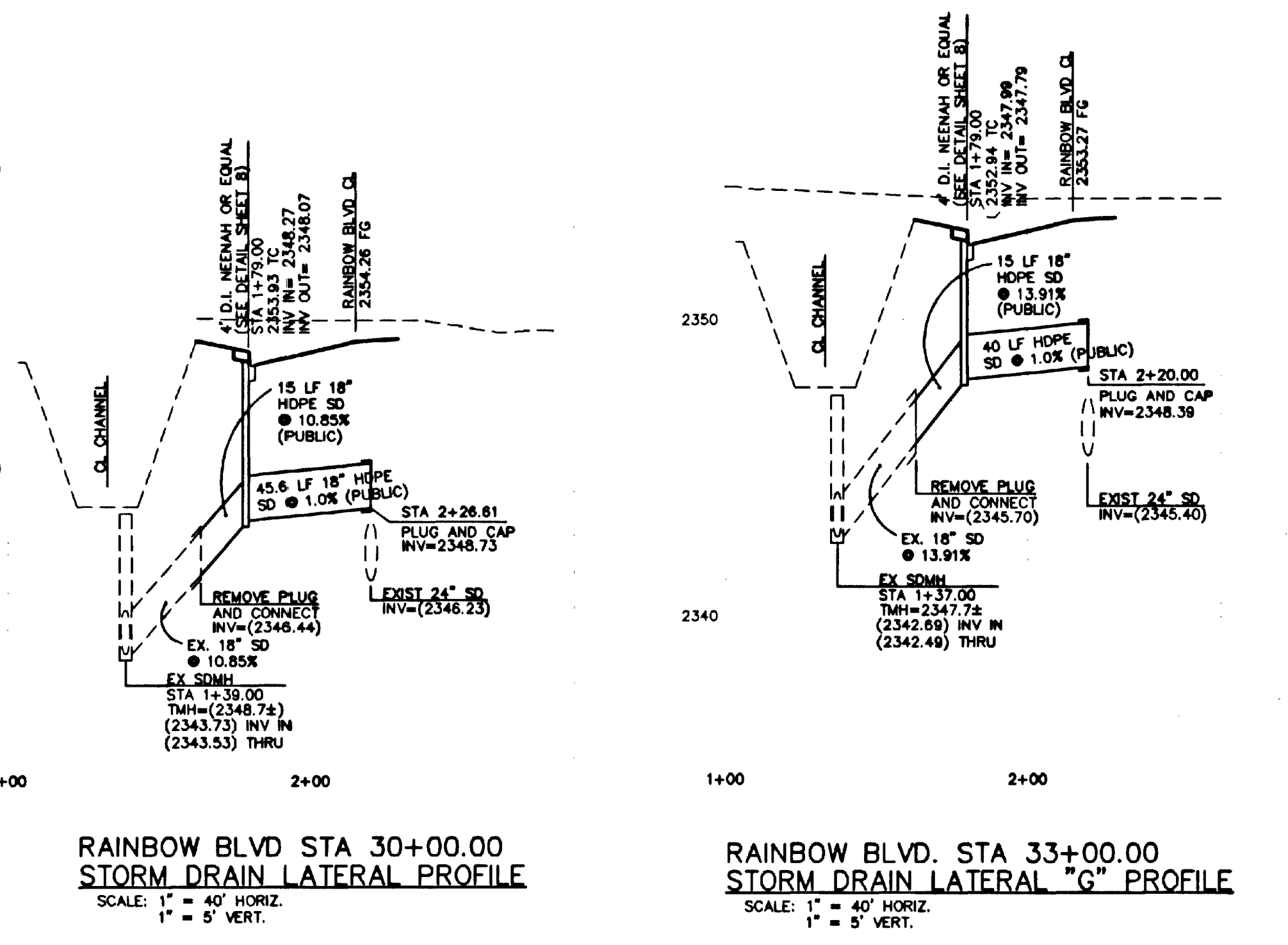
PROFILE
 SCALE: HORIZ. 1" = 40'
 VERT. 1" = 4'

BENCHMARK
 CITY OF LAS VEGAS BENCHMARK NO. 1LW90 115W. RIVET AND PLATE IN TOP OF CURB, SOUTH SIDE OF RAINBOW BLVD. AND FLANAGAN DRIVE, 200' NORTH OF GRAND TETON DRIVE.
 ELEVATION: = 724.3622 METERS (N.A.V.D. 88)
 ELEVATION: = 2376.512 U.S. FEET (CALCULATED N.A.V.D. 88)

BASIS OF BEARING
 THE BASIS OF BEARING FOR THIS SURVEY IS THE WEST LINE OF THE SOUTHEAST QUARTER (SE 1/4) OF SECTION 15, TOWNSHIP 19 SOUTH, RANGE 60 EAST, M.D.M., CLARK COUNTY, NEVADA, AS SHOWN IN FILE 115, PAGE 13 OF OFFICIAL RECORDS, CLARK COUNTY, NEVADA. I.E. NORTH 00°11'55" EAST

Call before you Overhead
 1-702-593-6111

Call before you Dig.
 1-800-227-2800



RAINBOW BLVD STA 30+00.00 STORM DRAIN LATERAL PROFILE
 SCALE: 1" = 40' HORIZ.
 1" = 5' VERT.

RAINBOW BLVD. STA 33+00.00 STORM DRAIN LATERAL "G" PROFILE
 SCALE: 1" = 40' HORIZ.
 1" = 5' VERT.

NO.	DESCRIPTION	DATE	APP'D

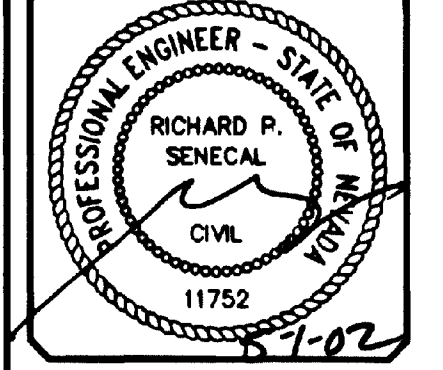
PULTE HOMES
 VILLAGE CENTER CIRCLE, SUITE 250
 LAS VEGAS, NEVADA 89113
 (702) 256-7900

PENTACORE
 CIVIL ENGINEERING, LAND SURVEYING, PLANNING
 CONSULTING, MANAGEMENT AND DESIGN
 LAS VEGAS, NEVADA 89146 (702)258-0115

RAINBOW BOULEVARD
 STA 30+00.00 TO STA 36+64.72
 PLAN AND PROFILE

WYETH RANCH
 UNIT 1

DATE:	11/26/03
DESIGNED BY:	
CHECKED BY:	
DATE CHECKED:	01/17/02
SCALE:	1" = 40'



SHEET **27** OF 41

W:\Active\88147028\Drawings\unit_1.pdw\11-26-03 11:44:30 AM