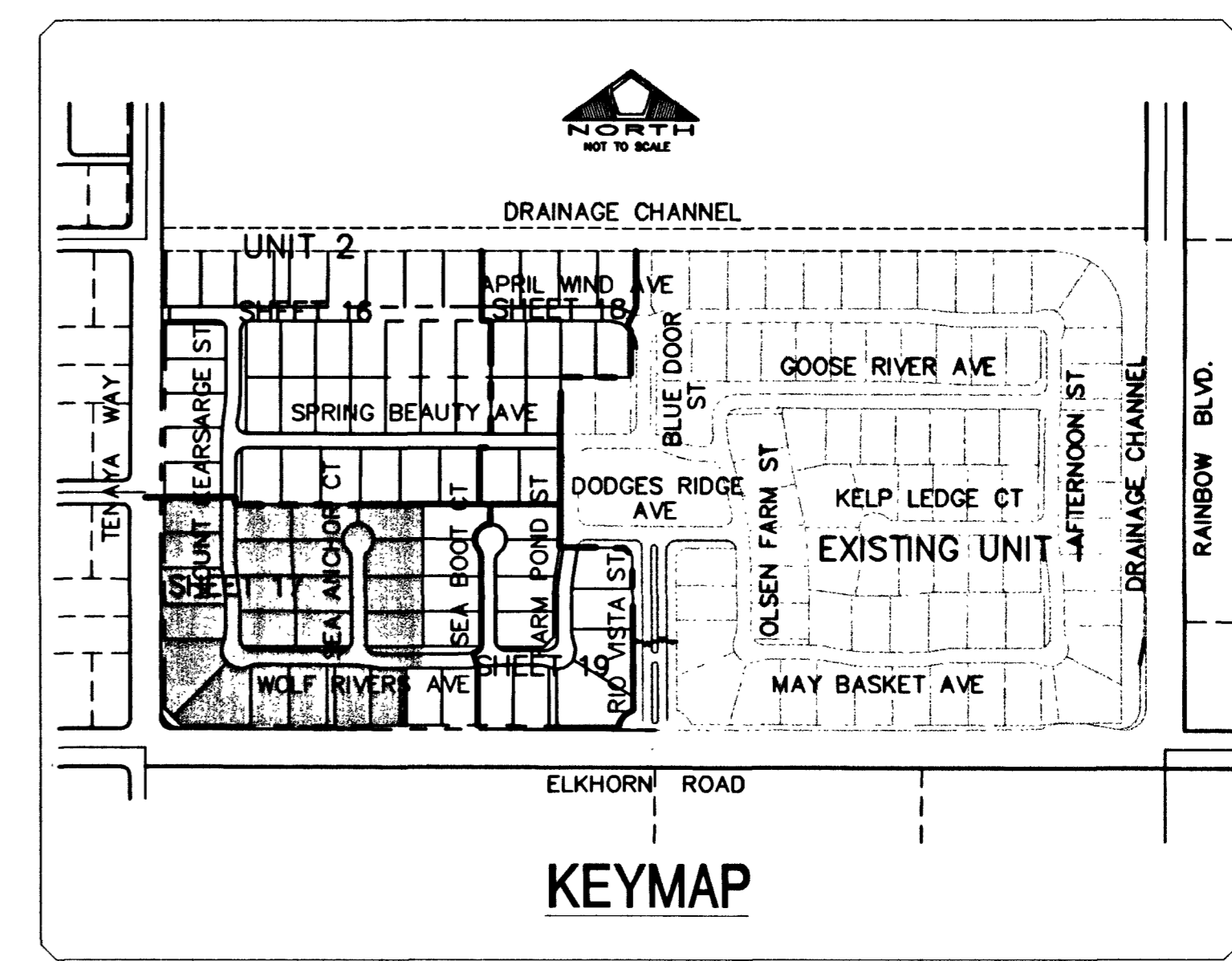
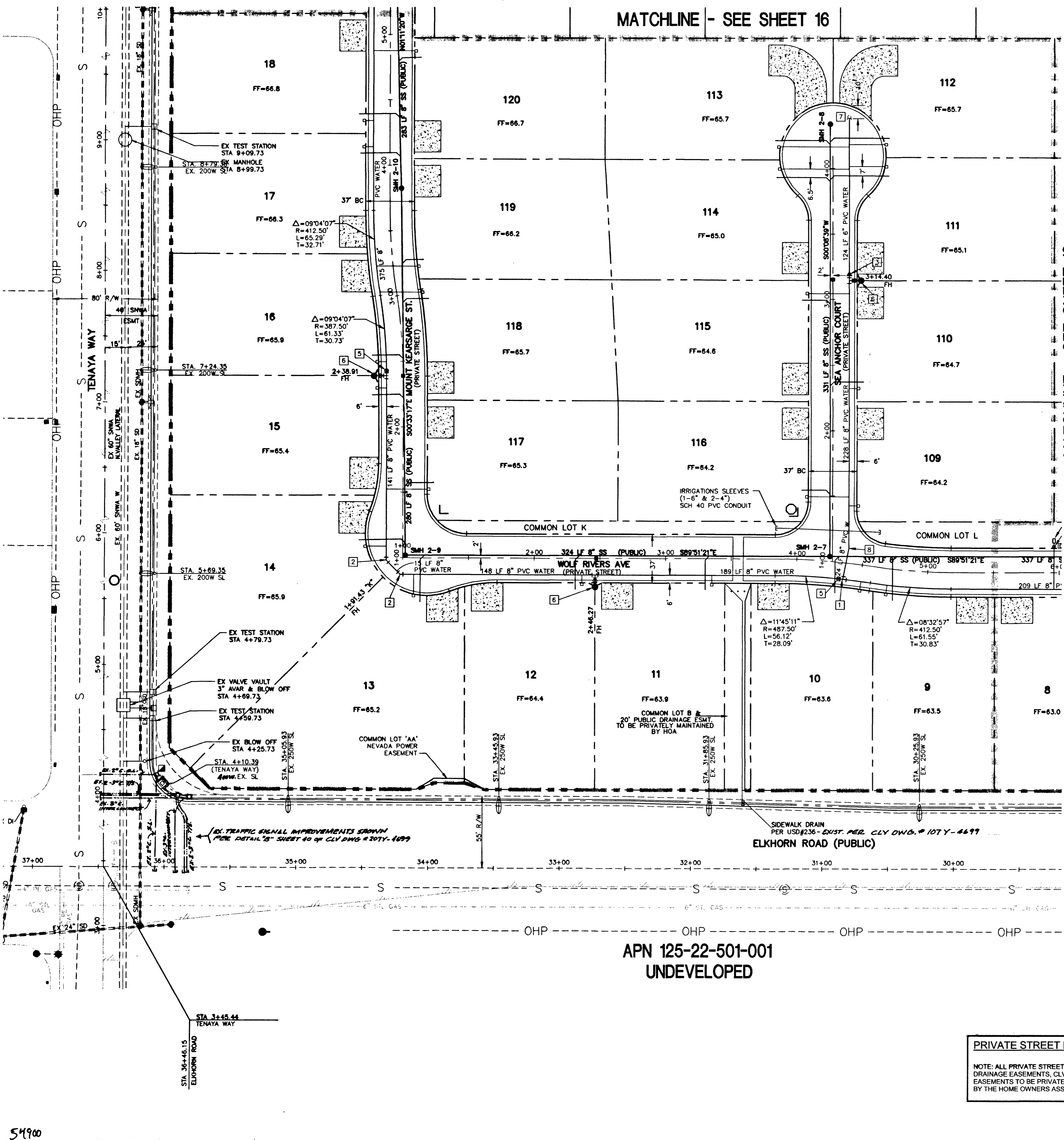
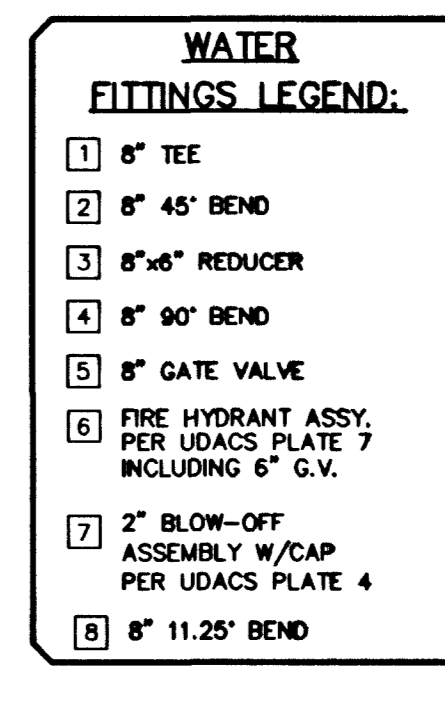
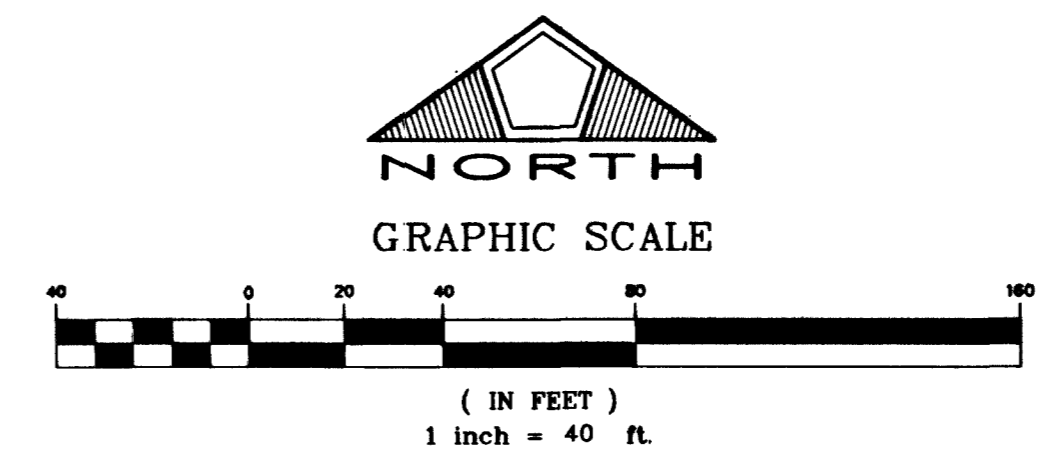
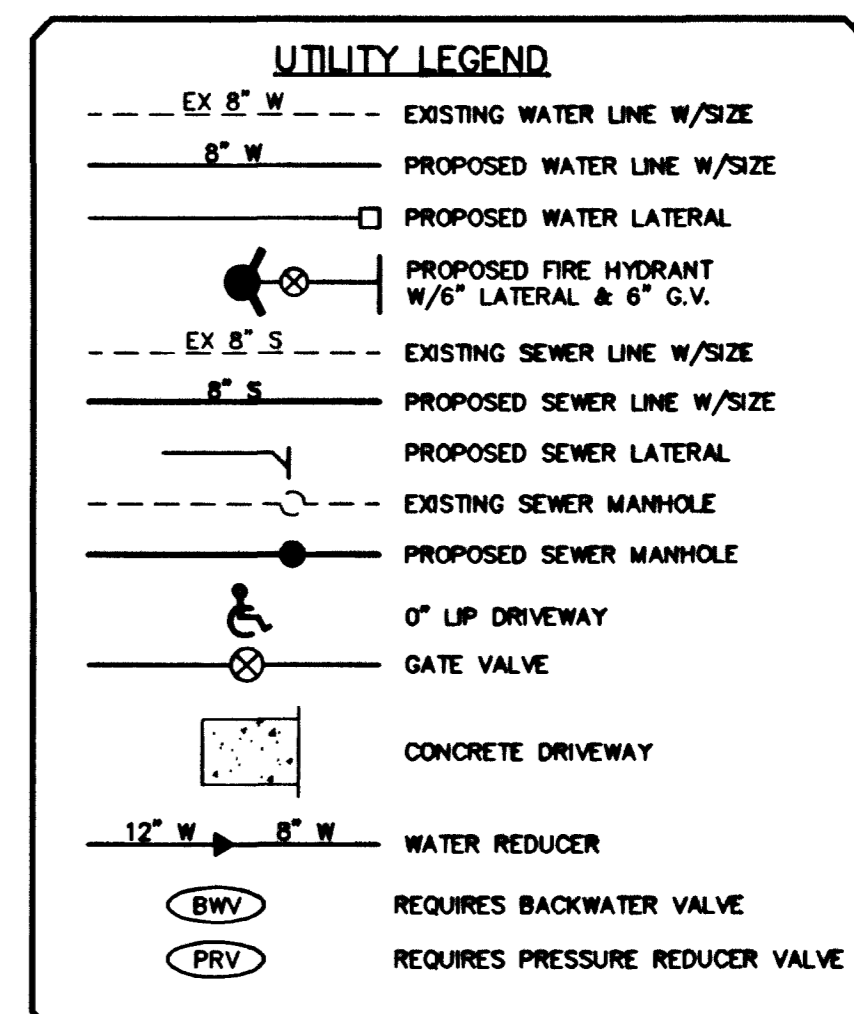


W:\Active\8817028\Drawings\unit 2 plans\02-UTI.dwg (patrow Mon, 09 Jun 2003 - 1:58pm)



NOTE:
INSTALL PIPELINE MARKER BALLS
IN TRENCH ABOVE EACH HORIZONTAL
ELBOW FITTING, PER MANUFACTURER
INSTRUCTIONS.



Call before you Dig
 1-800-227-2600
WEDNESDAY 8:00 AM - 5:00 PM

Call before you do Overhead
 1-702-593-6111

CONTRACTOR SHALL FIELD LOCATE AND PROTECT ALL SNWA/SNWS APPURTENANCES INCLUDING, BUT NOT LIMITED TO AV/AR, ACCESS MAINWAYS AND CATHODIC PROTECTION SYSTEMS. ALL ABOVE GROUND STRUCTURES AND AT GRADE STRUCTURES MUST BE ADJUSTED TO NEW GRADE AT CONTRACTOR'S EXPENSE. CATHODIC PROTECTION TEST STATIONS, RECTIFIERS, AND AV/AR'S MUST BE RELOCATED TO SIDEWALK PER SNWA STANDARDS AND AT CONTRACTOR'S EXPENSE. CONTRACTOR TO NOTIFY SOUTHERN NEVADA WATER AUTHORITY DEVELOPMENT PLAN REVIEW AT (702) 832-3444 AT LEAST 48 HOURS PRIOR TO CONSTRUCTION ACTIVITY.

SOUTHERN NEVADA WATER AUTHORITY _____ DATE _____
 SNWA APPROVAL IS VALID FOR ONE (1) YEAR FROM SIGNATURE DATE. IF CONSTRUCTION WITHIN THE EASEMENT OR RESTRICTED PIPE SAFETY ZONE IS NOT COMPLETE, PLANS MUST BE RESUBMITTED TO SNWA FOR APPROVAL.

BENCHMARK
 CITY OF LAS VEGAS BENCHMARK NO. 1LV90 115WS.
 RIVET AND PLATE IN TOP OF CURB, SOUTHEAST CORNER OF RAINBOW BLVD AND FLANAGAN DRIVE.
 ELEVATION = 724.3103 METERS (NAVD '88 PUBLISHED)
 ELEVATION = 2376.34 U.S. SURVEY FEET (NAVD '88 CALCULATED)
 PROJECT ELEVATION = 2376.52 U.S. SURVEY FEET

BASIS OF BEARING
 THE BASIS OF BEARING FOR THIS SURVEY IS THE WEST LINE OF THE SOUTHEAST QUARTER (SE 1/4) OF SECTION 15, TOWNSHIP 19 SOUTH, RANGE 90 EAST, M.D.M., CLARK COUNTY, NEVADA, AS SHOWN IN

MANHOLE SCHEDULE
 SEE SHEET 19

TRAFFIC LEGEND

- L 9" D3 STREET NAME SIGN (PER STD DWG 250)
- O 30" STOP SIGN (R1-1) LOCATE AT BCR
- BLUE REFLECTIVE MARKER
- ▼ STREET SIGN AS NOTED PER PLAN

APPROVALS

Robert Bell 6/10/03
 CITY FIRE MARSHAL DATE

 LAS VEGAS VALLEY WATER DISTRICT DATE

PRIVATE STREET NOTE

NOTE: ALL PRIVATE STREETS ARE PUBLIC DRAINAGE EASEMENTS, CLV SEWER AND PUE EASEMENTS TO BE PRIVATELY MAINTAINED BY THE HOME OWNERS ASSOCIATION.

DATE: 6/9/2003	S.L.Y.	D.L.	R.P.S.	R.W.C.	DATE: 6/9/03
DRAWN BY: D.L.	DESIGNED BY: R.P.S.	CHECKED BY: R.W.C.	ADA CHECKED: 11-40	JOB NO.: 8817028	SCALE: 1"=40'
Stanlec Consulting Inc. 7051 West Charleston Blvd Las Vegas NV U.S.A. 89117 Tel: 702.258.0115 Fax: 702.258.4956 www.stanlec.com					
1635 VILLAGE CENTER CIRCLE, SUITE 250 LAS VEGAS, NV U.S.A. 89134 (702) 258-7900					
PULTE HOMES WETH RANCH UNIT 2 UTILITY & TRAFFIC PLAN 2					
SHEET 17 OF 20 10746699-2					