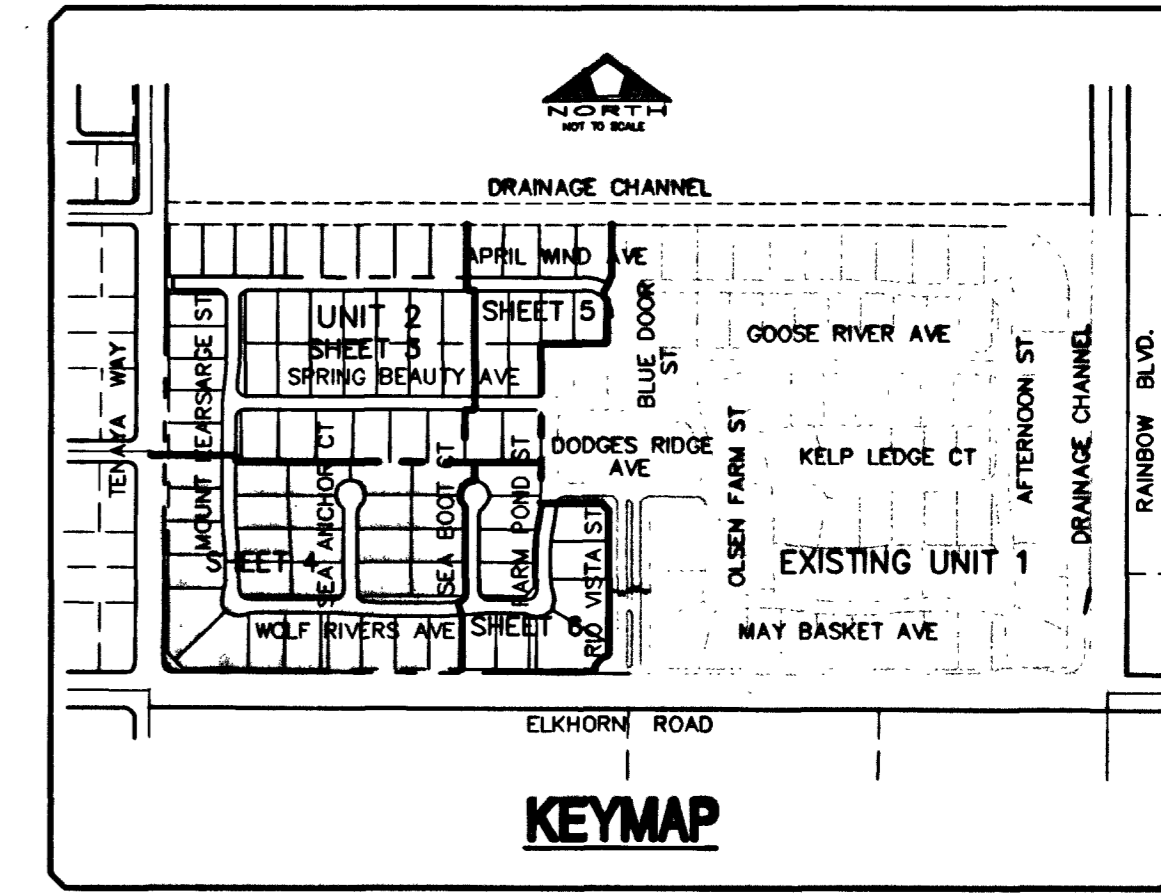
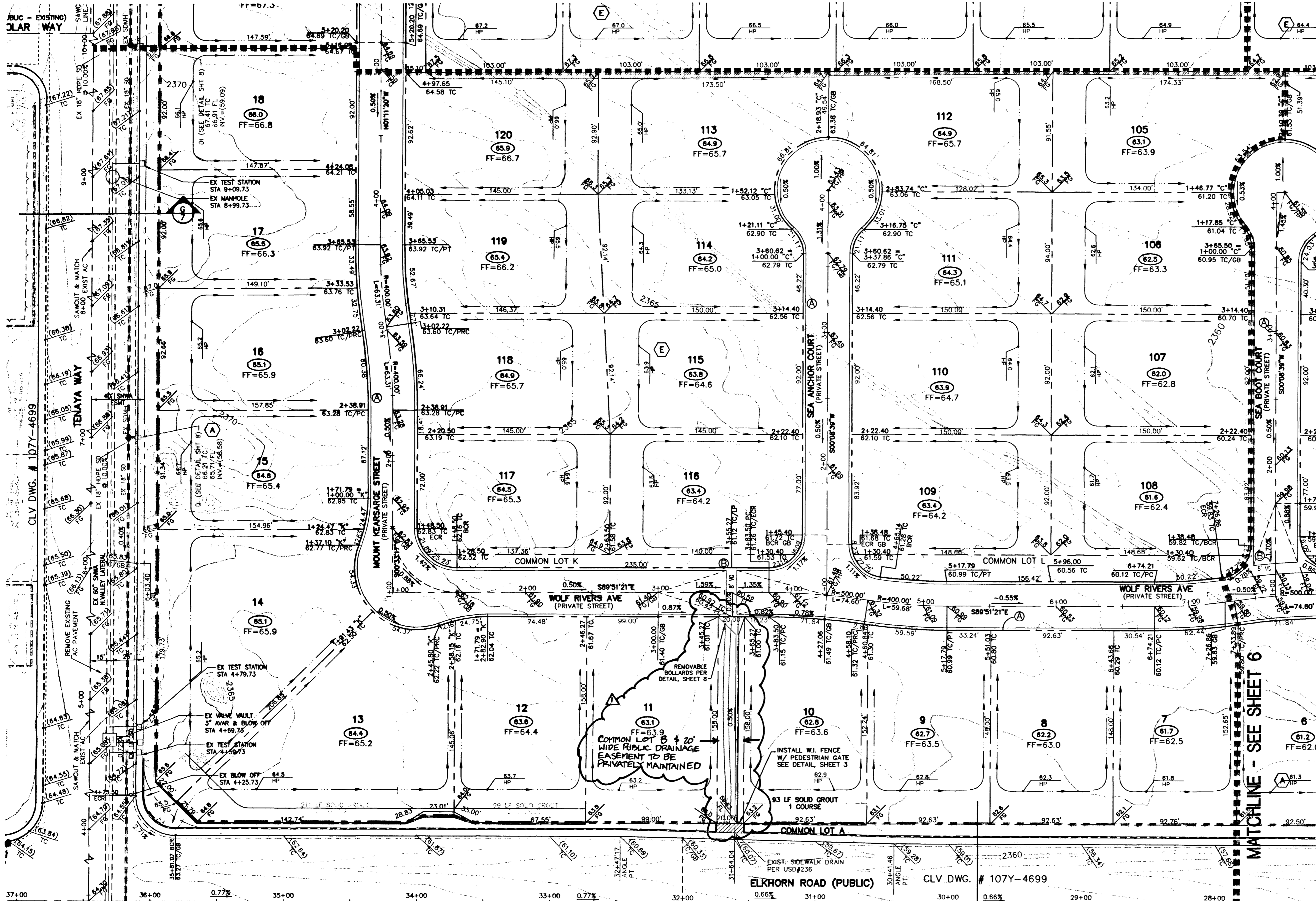
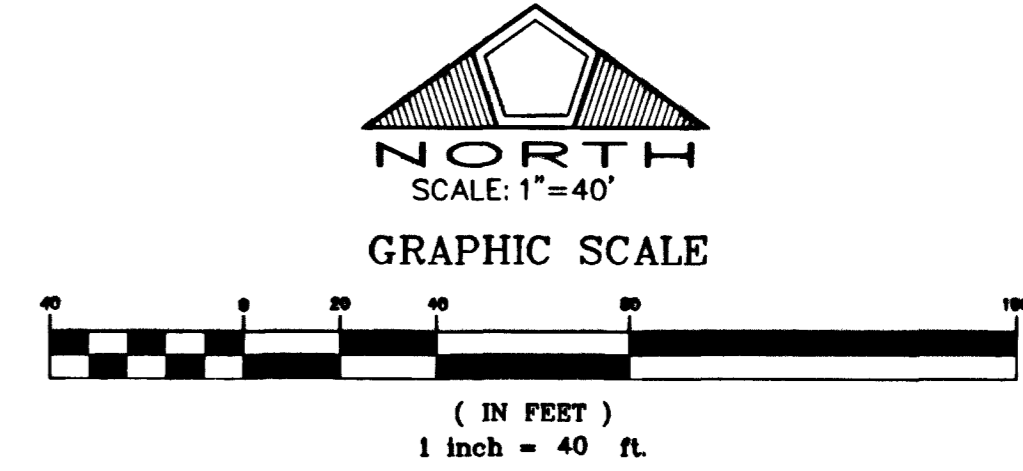


MATCHLINE - SEE SHEET 3



**LEGEND**

1	PROPERTY LINE/ RIGHT OF WAY	---	SIGHT VISIBILITY ZONE
2	STREET CENTERLINE	---	SWALE
3	BLOCK NUMBER	---	GRADE BREAK OR TRANSITION
4	LOT NUMBER	---	UNIT BOUNDARY
5	PROPOSED FINISH FLOOR	---	TOP OF SLOPE FRONT AND SIDEYARD
6	PROPOSED PAD ELEVATION	---	EXISTING IMPROVEMENTS
7	EXISTING ELEVATION	---	COURSES OF RETAINING WALL
8	PROPOSED ELEVATION	---	GARDEN WALL
9	FINISH GRADE	---	WROUGHT IRON FENCE
10	TOP OF CURB	---	2:1 SCARP
11	FLOW LINE	---	MATCHLINE
12	EXISTING CONTOUR	---	
13	PROPOSED CONTOUR	---	
14	PAD HIGH POINT	---	



- ENGINEER'S NOTES**
- CONTRACTOR IS RESPONSIBLE FOR DUST AND EROSION CONTROL DURING CONSTRUCTION.
  - SEE LANDSCAPE PLANS FOR LANDSCAPING AND ON-SITE IRRIGATION.
  - SEE DETAIL SHEET FOR ON-SITE PAVEMENT SECTIONS. CONTRACTOR TO VERIFY WITH SOILS REPORT.
  - ENGINEER TO BE NOTIFIED OF ANY DISCREPANCIES IMMEDIATELY.
  - THESE PLANS SHALL NOT, IN PART OR IN WHOLE, BE USED FOR CONSTRUCTION UNTIL APPROVED AND SIGNED BY THE GOVERNING AGENCIES.
  - CONTRACTOR TO MAINTAIN POSITIVE DRAINAGE AWAY FROM PROPOSED BUILDINGS.

**BENCHMARK**  
 CITY OF LAS VEGAS BENCHMARK NO. 11900 11SW.5. RIVET AND PLATE IN TOP OF CURB, SOUTHEAST CORNER OF RAINBOW BLVD AND FLANAGAN DRIVE.  
 ELEVATION = 724.3103 METERS (NAVD '88 PUBLISHED)  
 ELEVATION = 2376.34 U.S. SURVEY FEET (NAVD '88 CALCULATED)  
 PROJECT ELEVATION = 2376.52 U.S. SURVEY FEET

**ENGINEER'S CERTIFICATE**  
 I CERTIFY THIS GRADING PLAN IS IN CONFORMANCE WITH THE APPROVED DRAINAGE STUDY FOR THIS PROJECT ON FILE AT THE CITY OF LAS VEGAS.  
 Richard W. Cummock 7.2.03 DATE  
 RICHARD W. CUMMOCK, PE NO. 5447

CONTRACTOR SHALL FIELD LOCATE AND PROTECT ALL SNWA/SNWS APPURTENANCES INCLUDING, BUT NOT LIMITED TO AV/AR, ACCESS HANWAYS AND CATHODIC PROTECTION SYSTEMS. ALL ABOVE GROUND STRUCTURES AND AT GRADE STRUCTURES MUST BE ADJUSTED TO NEW GRADE AT CONTRACTOR'S EXPENSE. CATHODIC PROTECTION TEST STATIONS, RECTIFIERS, AND AV/AR'S MUST BE RELOCATED TO SIDEWALK PER SNWA STANDARDS AND AT CONTRACTOR'S EXPENSE. CONTRACTOR TO NOTIFY SOUTHERN NEVADA WATER AUTHORITY DEVELOPMENT PLAN REVIEW AT (702) 832-3444 AT LEAST 48 HOURS PRIOR TO CONSTRUCTION ACTIVITY.

SOUTHERN NEVADA WATER AUTHORITY DATE  
 SNWA APPROVAL IS VALID FOR ONE (1) YEAR FROM SIGNATURE DATE. IF CONSTRUCTION WITHIN THE EASEMENT OR RESTRICTED PIPE SAFETY ZONE IS NOT COMPLETE, PLANS MUST BE RESUBMITTED TO SNWA FOR APPROVAL.

**RETAINING WALL CONVERSION TABLE**

NO. COURSES	HEIGHT	STD. RETAINER	RET. ADJACENT TO SW
2	1.33'	0.70' - 0.80'	N/A
3	2.00'	0.84' - 1.50'	0.50' - 1.17'
4	2.67'	1.51' - 2.17'	1.18' - 1.83'
5	3.33'	2.18' - 2.83'	1.84' - 2.50'
6	4.00'	2.84' - 3.50'	2.51' - 3.17'
7	4.67'	3.51' - 4.17'	3.18' - 3.83'
8	5.33'	4.18' - 4.83'	3.84' - 4.50'
9	6.00'	4.84' - 5.50'	4.51' - 5.17'
10	6.67'	5.51' - 6.17'	5.18' - 5.83'
11	7.33'	6.18' - 6.83'	5.84' - 6.50'
12	8.00'	6.84' - 7.50'	6.51' - 7.17'

**EARTHWORK QUANTITIES - UNIT 2**  
 CUT: 46,413 CY  
 FILL (AD): 80,152 CY  
 NET DIFF: 33,739 CY (IMPORT)

**PRIVATE STREET NOTE**  
 NOTE: ALL PRIVATE STREETS ARE PUBLIC DRAINAGE EASEMENTS, CLV SEWER AND PUE EASEMENTS TO BE PRIVATELY MAINTAINED BY THE HOME OWNERS ASSOCIATION.

**HDPE PIPE CONSTRUCTION NOTE**  
 CONTRACTOR SHALL PROVIDE 30" MINIMUM COVER OVER HDPE PIPE PRIOR TO VEHICLE LOADING DURING CONSTRUCTION. TRENCH WIDTH MUST BE WIDE ENOUGH TO ACCOMMODATE COMPACTION EQUIPMENT. SEE MANUFACTURER'S GUIDELINES (PRODUCT NOTE 3.114) AND ASTM D2321. CONTRACTOR SHALL NOT USE HYDRO-HAMMER TYPE COMPACTORS OVER PIPE TRENCH AREA.

**CONSTRUCTION NOTES**  
 (A) CONSTRUCT "L" TYPE CURB PER STD. DWG. 216  
 (B) CONSTRUCT CROSS GUTTER PER STD. DWG. 228

**BASIS OF BEARING**  
 THE BASIS OF BEARING FOR THIS SURVEY IS THE WEST LINE OF THE SOUTHEAST QUARTER (SE 1/4) OF SECTION 15, TOWNSHIP 19 SOUTH, RANGE 60 EAST, M.D.M., CLARK COUNTY, NEVADA, AS SHOWN IN FILE 115, PAGE 13 OF OFFICIAL RECORDS, CLARK COUNTY, NEVADA. I.E. NORTH 001°55' EAST

**DISCLAIMER NOTE**  
 EXISTING UTILITY LOCATIONS SHOWN HEREIN ARE APPROXIMATE ONLY. IT SHALL BE THE CONTRACTOR'S RESPONSIBILITY TO DETERMINE THE EXACT VERTICAL AND HORIZONTAL LOCATION OF ALL EXISTING UNDERGROUND UTILITIES PRIOR TO COMMENCING CONSTRUCTION. NO REPRESENTATION IS MADE THAT ALL EXISTING UTILITIES ARE SHOWN HEREON. THE ENGINEER ASSUMES NO RESPONSIBILITY FOR UTILITIES NOT SHOWN OR UTILITIES NOT SHOWN IN THEIR PROPER LOCATION.  
 CALL BEFORE YOU DIG: 1-800-227-2600.

DATE: 7/2/2003  
 PM: S.L.Y.  
 DRAWN BY: D.L.  
 DESIGNED BY: R.P.C.  
 CHECKED BY: R.W.C.  
 ADA CHECKED:  
 JOB NO.: 8817028  
 SCALE: 1"=40'

Stantec Consulting Inc.  
 7251 West Charleston Blvd.  
 Las Vegas NV U.S.A.  
 89117  
 Tel: 702.258.0115  
 Fax: 702.258.4956  
 www.stantec.com

**Pulte**  
 1635 VILLAGE CENTER CIRCLE, SUITE 200  
 LAS VEGAS, NEVADA 89134  
 (702) 256-7900

PULTE HOMES  
 WYETH RANCH UNIT 2  
 GRADING PLAN 2

REGISTERED PROFESSIONAL ENGINEER - STATE OF NEVADA  
 RICHARD W. CUMMOCK  
 CIVIL  
 5447  
 7.2.03

SHEET  
**4**  
 OF 20

W:\Active\08147028\Drawings\unit 2 plans\02-cpi.dwg Pultrow Wed, 02 Jul 2003 - 8:34am  
 54887 3606