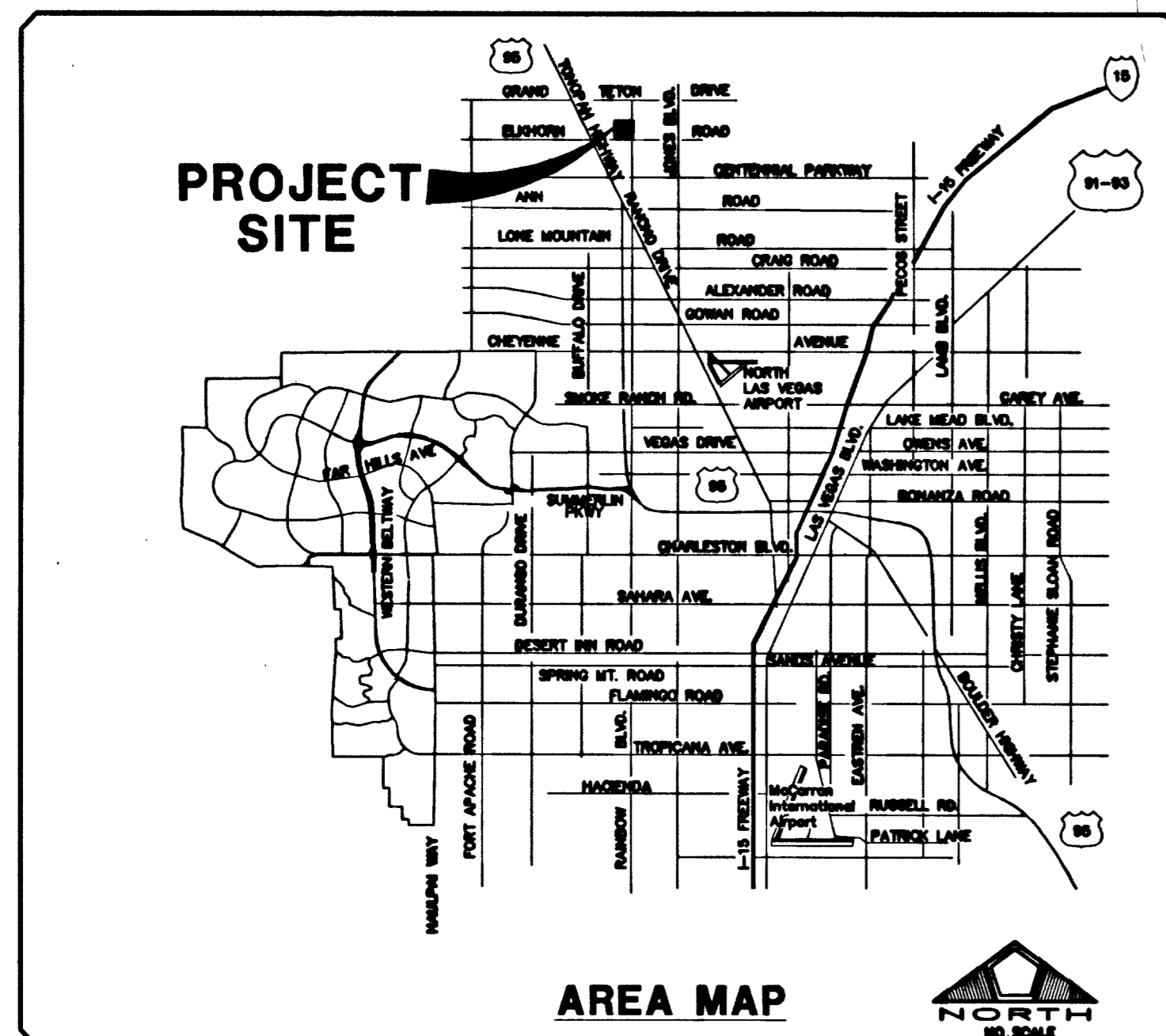
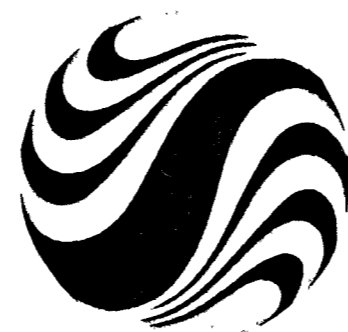


# IMPROVEMENT PLANS FOR WYETH RANCH UNIT 2

APN # 125-15-801-002



1635 VILLAGE CENTER CIRCLE, SUITE 250  
LAS VEGAS, NEVADA 89134  
(702) 256-7900

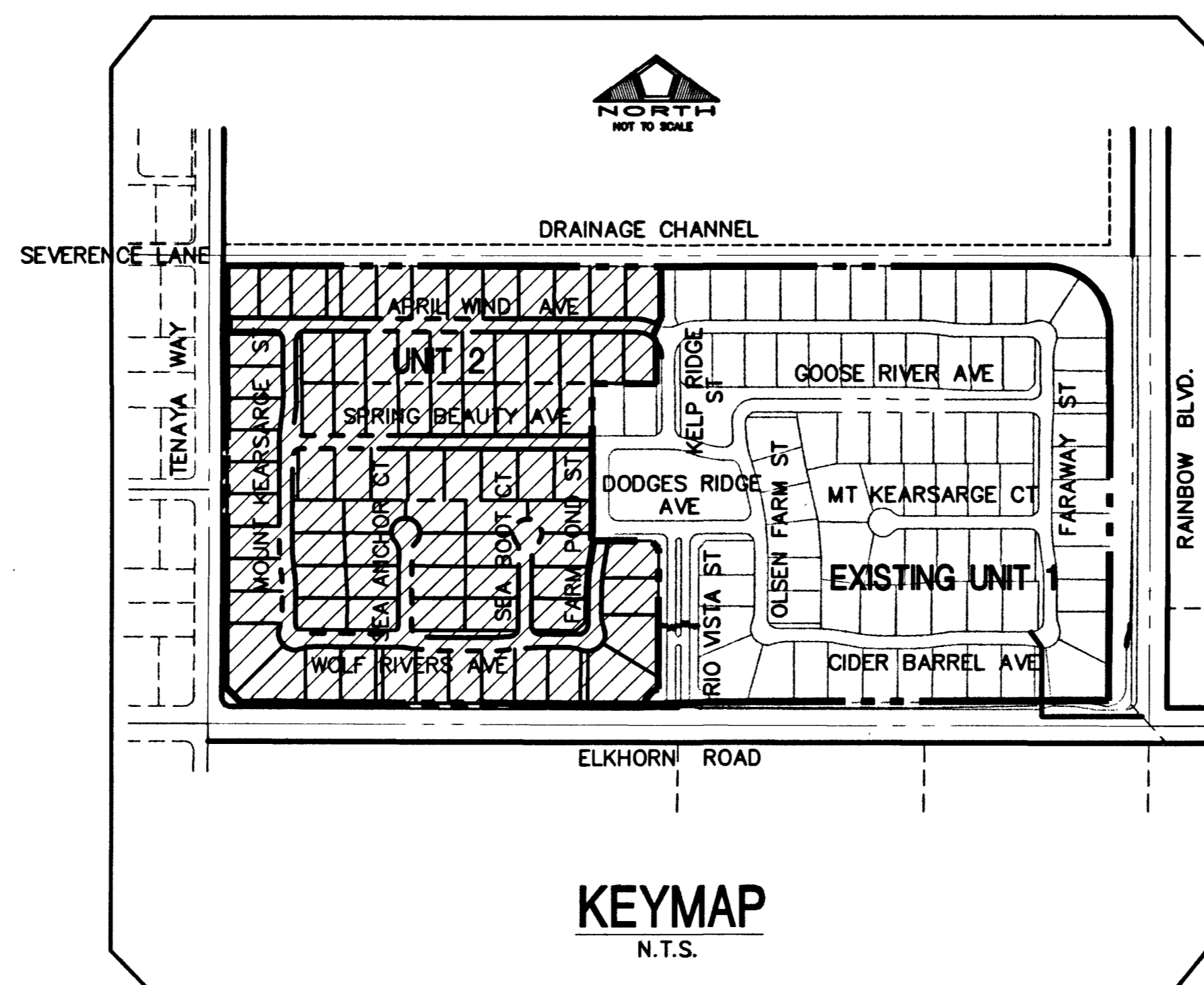


Stantec

Stantec Consulting Inc.

7151 West Charleston Blvd.  
Las Vegas NV U.S.A.  
89117  
Tel. 702.258.0115  
Fax. 702.258.4956  
www.stantec.com

INDEX OF DRAWINGS	
1	COVER SHEET AND AREA MAP
2	GENERAL NOTES & ESTIMATE OF QUANTITIES
3	GRADING PLAN 1
4	GRADING PLAN 2
5	GRADING PLAN 3
6	GRADING PLAN 4
7	GRADING PLAN SECTIONS AND DETAILS 1
8	GRADING PLAN SECTIONS AND DETAILS 2
9	APRIL WIND AVENUE STA 1+00 TO STA 8+00 PLAN AND PROFILE
10	APRIL WIND AVENUE STA 8+00 TO STA 12+97.14 PLAN AND PROFILE
11	SPRING BEAUTY AVENUE PLAN AND PROFILE
12	WOLF RIVER AVENUE PLAN AND PROFILE
13	MOUNT KEARSARGE STREET PLAN AND PROFILE
14	SEA ANCHOR COURT & SEA BOOT COURT PLAN AND PROFILE
15	FARM POND STREET & COMMON LOT T PLAN AND PROFILE
16	UTILITY & TRAFFIC PLAN 1
17	UTILITY & TRAFFIC PLAN 2
18	UTILITY & TRAFFIC PLAN 3
19	UTILITY & TRAFFIC PLAN 4
20	SVZ DETAILS, TRAFFIC NOTES AND DETAILS



APPROVALS	
	7/2/03
CHARLES K.OWSKI, JR.; PE #4784 CITY ENGINEER	DATE
APPROVAL OF THESE PLANS IS LIMITED TO THOSE IMPROVEMENTS CONSTRUCTED IN THE DEDICATED RIGHTS-OF-WAY AND/OR DEDICATED EASEMENTS. THIS APPROVAL DOES NOT AUTHORIZE THE CONSTRUCTION OF ANY IMPROVEMENTS THAT DEVIATE FROM ADOPTED STANDARDS AND/OR SPECIFICATIONS, EXCEPT THOSE SPECIFICALLY LISTED UNDER DEVIATIONS FROM STANDARD. THE ENGINEER SHALL RESOLVE ANY DEVIATION OTHER THAN THOSE LISTED IN DEVIATIONS FROM STANDARDS IN FAVOR OF THE UNIFORM STANDARD DRAWINGS AND SPECIFICATIONS CLARK COUNTY AREA NEVADA.	
	5/13/03
MARCO WHEELER, CURRENT PLANNING MANAGER THIS PLAN MEETS THE APPLICABLE STANDARDS OF THE PLANNING AND DEVELOPMENT DEPARTMENT.	DATE
	5.9.03
CITY FIRE MARSHAL	DATE
LAS VEGAS VALLEY WATER DISTRICT (SHEETS 1, 9, 10, 13 & 16-20)	DATE
	5-1-03
SOUTHWEST GAS	DATE
	5.2.03
NEVADA POWER COMPANY KATHRYN A. Caveling	DATE
NEVADA POWER COMPANY ACKNOWLEDGES THAT WE HAVE RECEIVED YOUR PLANS AND WILL PROVIDE SERVICE TO ALL ELECTRICAL NEEDS ASSOCIATED WITH THIS PROJECT. NEVADA POWER COMPANY RESERVES THE RIGHT TO ADDRESS ANY EXISTING OR FUTURE CONFLICTS ONCE THE FINAL DESIGN IS COMPLETE. THE NEW SERVICE AND THE RESOLUTION OF ANY CONFLICTS WILL BE ACCOMPLISHED PURSUANT TO THE NEVADA PUBLIC UTILITY COMMISSION'S RULES AND REGULATIONS.	

SOUTHERN NEVADA WATER AUTHORITY (SNWA) APPROVAL IS VALID FOR ONE (1) YEAR FROM THE SIGNATURE DATE. IF CONSTRUCTION WITHIN THE EASEMENT OR RESTRICTED PIPE SAFETY ZONE IS NOT COMPLETE, PLANS MUST BE RESUBMITTED TO SNWA FOR APPROVAL.

DATE: 4/30/2003	NO. DESCRIPTION	DATE	APPROVED
PH: S.L.Y.	D.L.		
DRAWN BY: D.L.	R.P.S.		
DESIGNED BY: R.P.S.	R.W.C.		
CHECKED BY: R.W.C.	ADA CHECKED:		
JOB NO.: 88147028	SCALE:	NONE	

Stantec Consulting Inc.  
7251 West Charleston Blvd.  
Las Vegas NV U.S.A.  
89117  
Tel. 702.258.0115  
Fax. 702.258.4956  
www.stantec.com

1635 VILLAGE CENTER CIRCLE, SUITE 250  
LAS VEGAS, NEVADA 89134  
(702) 256-7900

PULTE HOMES  
WYETH RANCH UNIT 2  
COVER SHEET

PROFESSIONAL ENGINEER - STATE OF NEVADA  
RICHARD W. CUNNINGHAM  
No. 231-M  
CIVIL  
5447

5-1-03

SHEET  
1  
OF 20

1074699-2