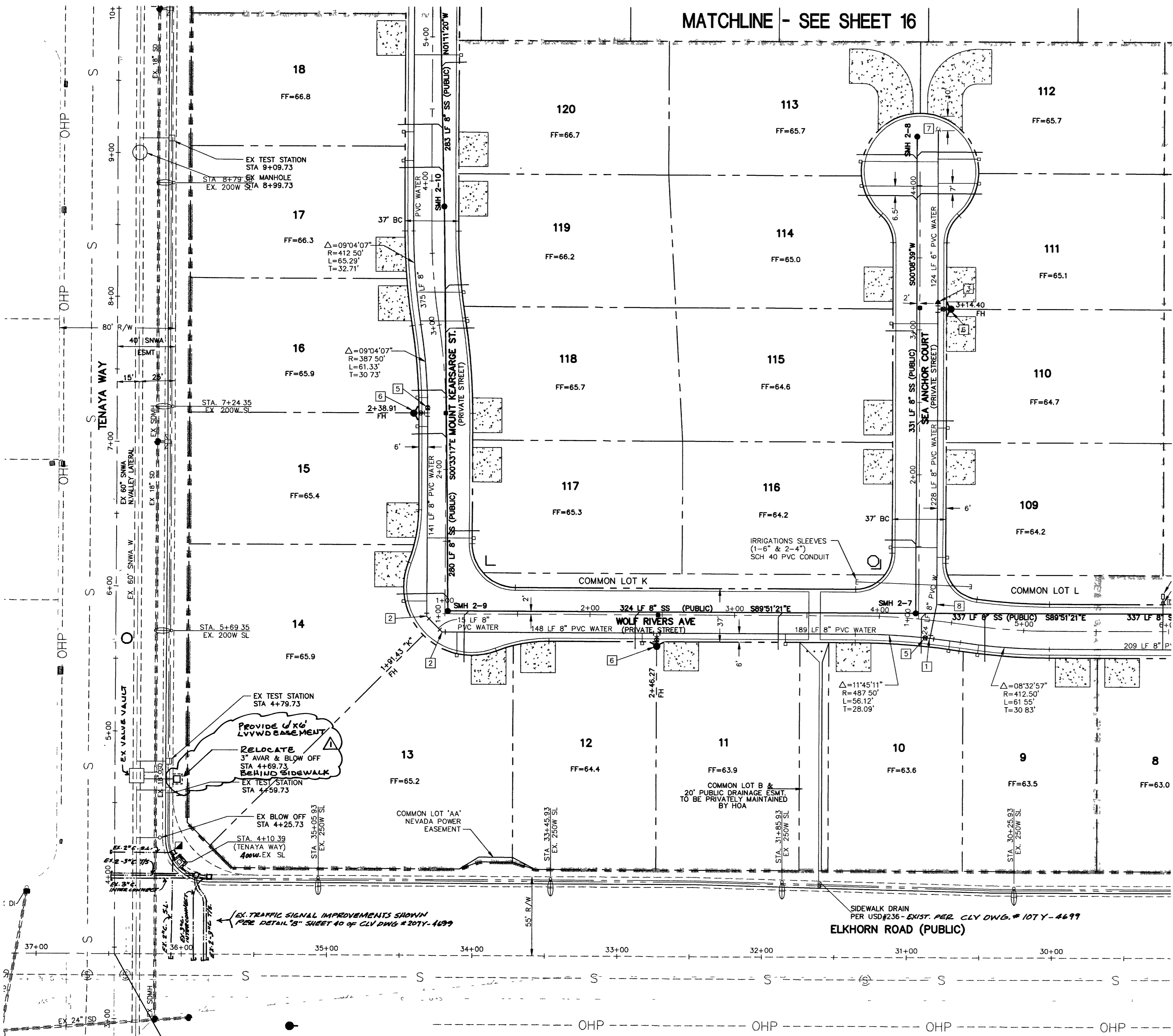


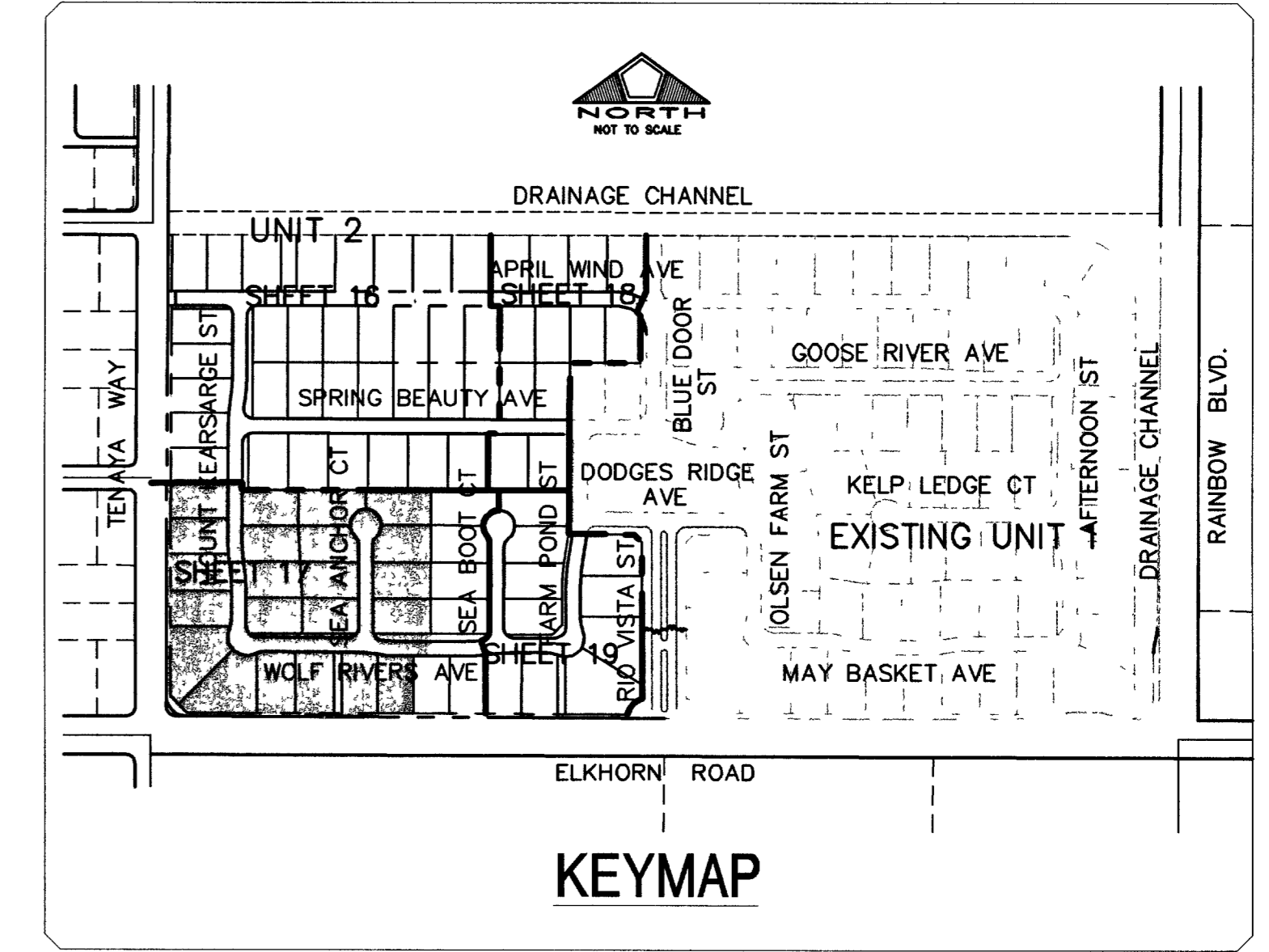
W:\Active\88147028\Drawings\unit 2 plans\02-UTI.dwg p.dwg Mon, 09 Jun 2003 - 1:58pm



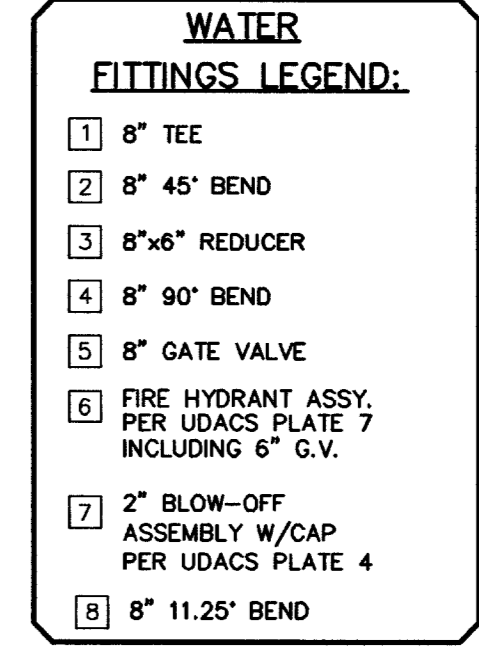
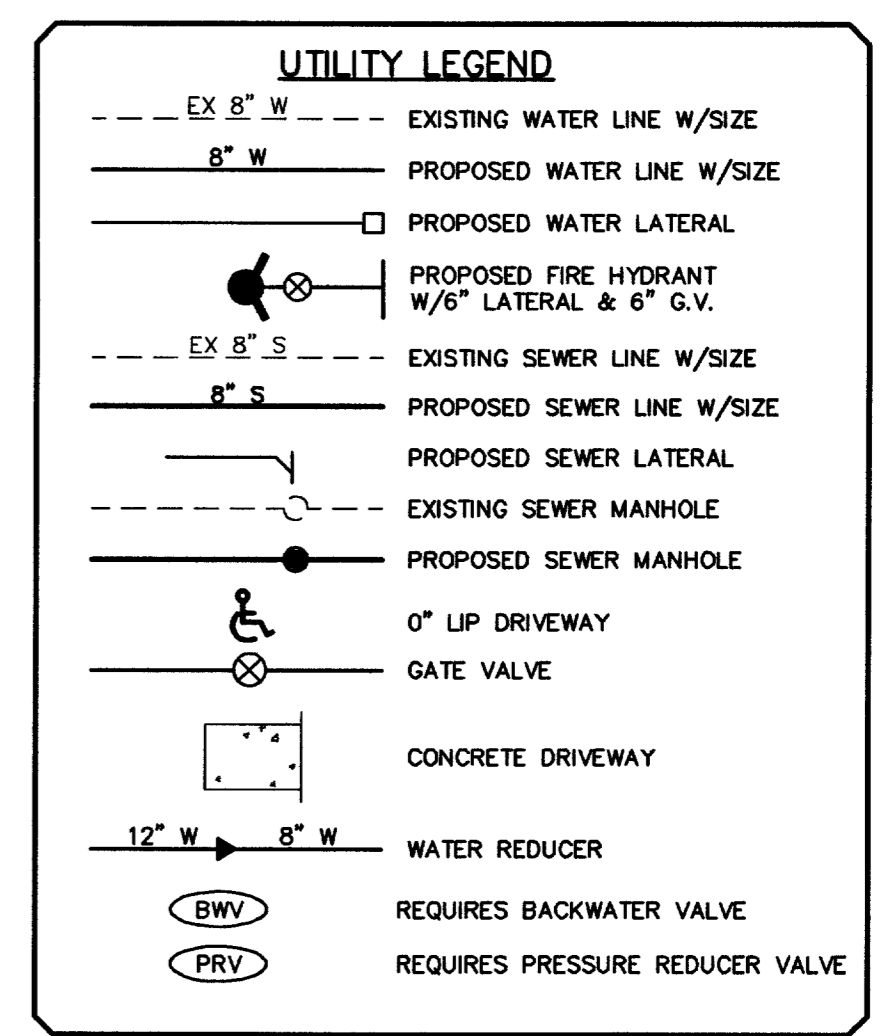
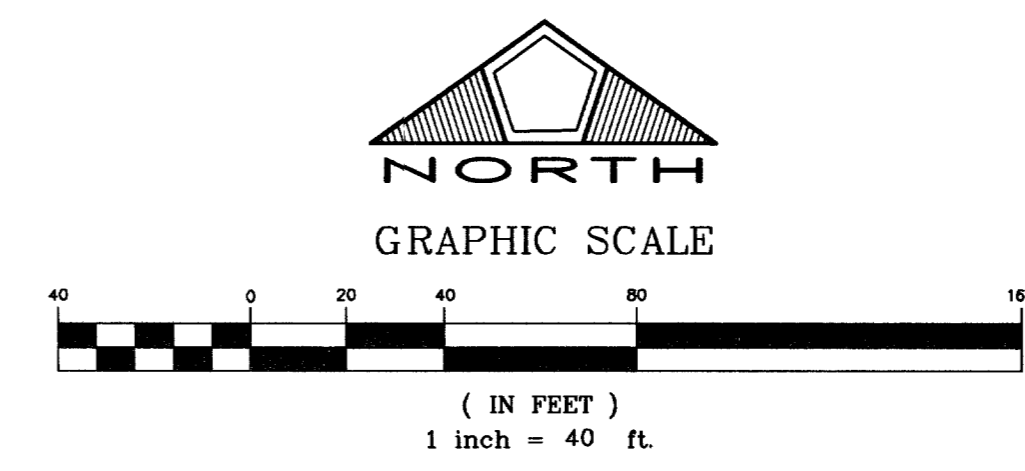
MATCHLINE - SEE SHEET 16

MATCHLINE - SEE SHEET 19

APN 125-22-501-001
UNDEVELOPED



NOTE:
INSTALL PIPELINE MARKER BALLS
IN TRENCH ABOVE EACH HORIZONTAL
ELBOW FITTING, PER MANUFACTURER
INSTRUCTIONS.



Call before you Dig.
1-800-227-2600
Avoid hitting overhead power lines. It's costly.
Call before you do Overhead
1-702-593-6111

CONTRACTOR SHALL FIELD LOCATE AND PROTECT ALL SNWA/SNWS APPURTENANCES INCLUDING, BUT NOT LIMITED TO AV/AR, ACCESS MAINWAYS AND CATHODIC PROTECTION SYSTEMS. ALL ABOVE GROUND STRUCTURES AND AT GRADE STRUCTURES MUST BE ADJUSTED TO NEW GRADE AT CONTRACTORS EXPENSE. CONTRACTOR TO NOTIFY SOUTHERN NEVADA WATER AUTHORITY DEVELOPMENT PLAN REVIEW AT (702) 832-3444 AT LEAST 48 HOURS PRIOR TO CONSTRUCTION ACTIVITY.

SOUTHERN NEVADA WATER AUTHORITY DATE
SNWA APPROVAL IS VALID FOR ONE (1) YEAR FROM SIGNATURE DATE. IF CONSTRUCTION WITHIN THE EASEMENT OR RESTRICTED PIPE SAFETY ZONE IS NOT COMPLETE, PLANS MUST BE RESUBMITTED TO SNWA FOR APPROVAL.

BENCHMARK
CITY OF LAS VEGAS BENCHMARK NO. 1LV90 11SW5.
RIVET AND PLATE IN TOP OF CURB, SOUTHEAST CORNER OF RAINBOW BLVD AND FLANAGAN DRIVE.
ELEVATION = 724.3103 METERS (NAVD '88 PUBLISHED)
ELEVATION = 2376.34 U.S. SURVEY FEET (NAVD '88 CALCULATED)
PROJECT ELEVATION = 2376.52 U.S. SURVEY FEET

MANHOLE SCHEDULE
SEE SHEET 19

TRAFFIC LEGEND
L 9" D3 STREET NAME SIGN (PER STD DWG 250)
O 30" STOP SIGN (R1-1) LOCATE AT BCR
■ BLUE REFLECTIVE MARKER
- STREET SIGN AS NOTED PER PLAN

APPROVALS
Richard Bell 6/10/03
CITY FIRE MARSHAL DATE
Las Vegas Water District 7/18/03
DATE

PRIVATE STREET NOTE
NOTE: ALL PRIVATE STREETS ARE PUBLIC DRAINAGE EASEMENTS. CIVIL SEWER AND PUE EASEMENTS TO BE PRIVATELY MAINTAINED BY THE HOME OWNERS ASSOCIATION.

DATE: 6/9/2003	SCALE: 1"=40'
PM: S.L.Y.	DATE: 4-12-06
DRAWN BY: D.L.	PROJECT: RELOCATE A.V. & B.O. BEHIND SIDEWALK
DESIGNED BY: R.P.S.	PROVIDE U.P. & L.V. W/D EASEMENT
CHECKED BY: R.W.C.	NO DESCRIPTION
ADA CHECKED	DATE: 4-12-06
JOB NO.: 88147028	DATE: 4-12-06
SCALE: 1"=40'	DATE: 4-12-06

Copyright Reserved

Stantec Consulting Inc.
7251 West Cheyenne Blvd
Las Vegas NV U.S.A.
89111 702.258.0115
Tel 702.258.4956
www.stantec.com

Stantec

Pulte
1635 VILLAGE CENTER CIRCLE, SUITE 250
LAS VEGAS, NEVADA 89134
(702) 258-7800

PULTE HOMES
WYETH RANCH UNIT 2
UTILITY & TRAFFIC PLAN 2

7-3-06
exp 12-31-06
For Rev. Draw

PROFESSIONAL ENGINEER - STATE OF NEVADA
RICHARD A. CLUMBERG
No. 12-81-04
CIVIL
5447
6-9-03

SHEET
17
OF 20
10744699-2