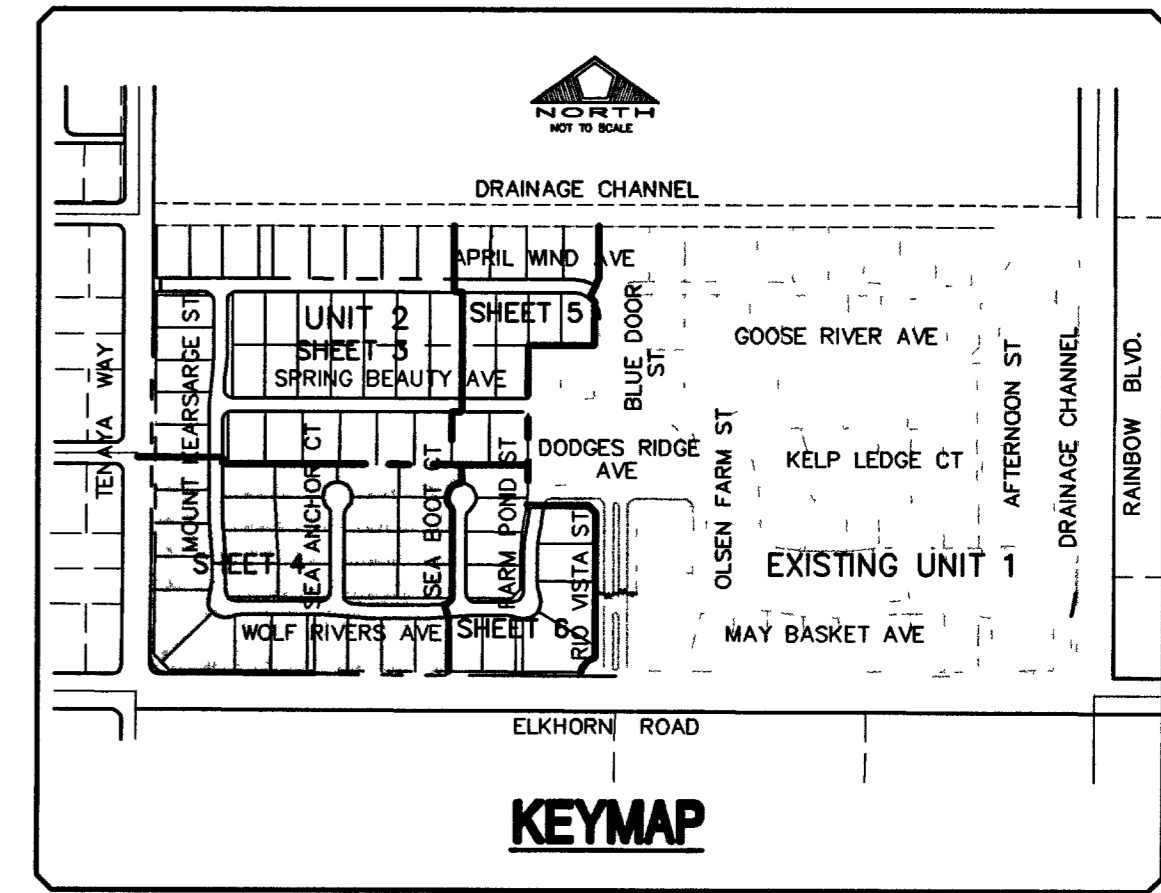
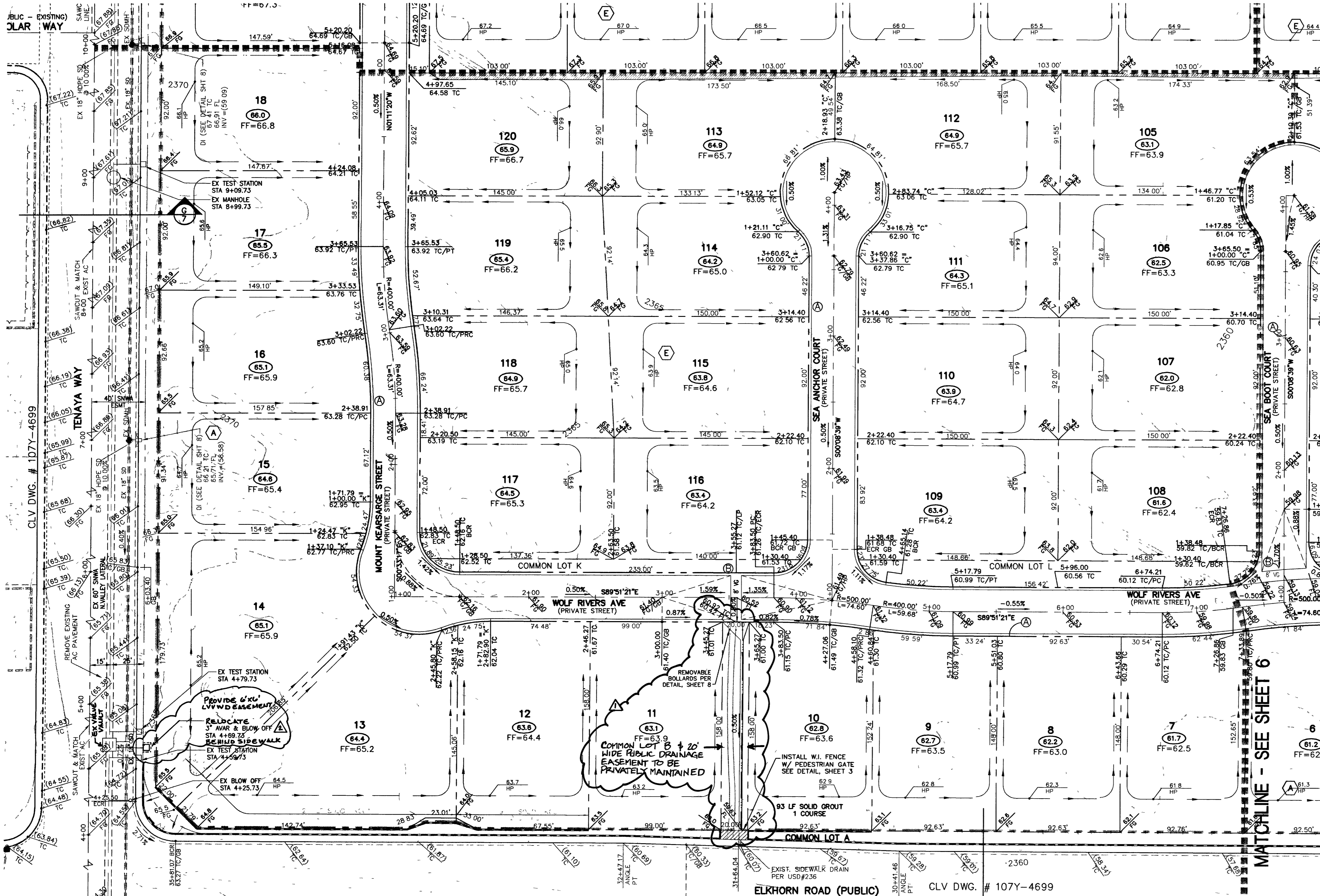
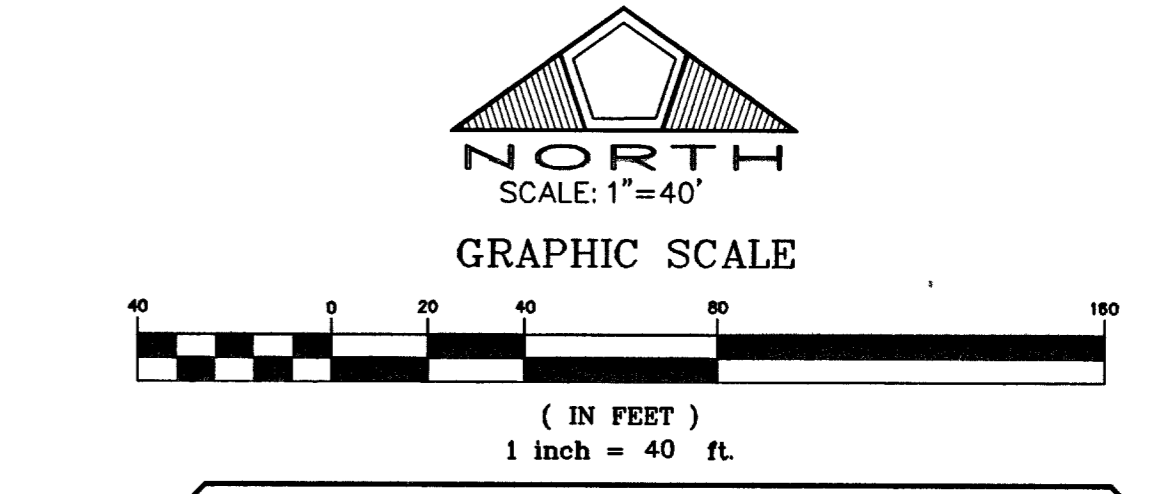


MATCHLINE - SEE SHEET 3



LEGEND

①	PROPERTY LINE / RIGHT OF WAY	—	SIGHT VISIBILITY ZONE
23	STREET CENTERLINE	—	SWALE
FF=28.6	BLOCK NUMBER	—	GRADE BREAK OR TRANSITION
27.4	LOT NUMBER	—	UNIT BOUNDARY
(78.57)	PROPOSED FINISH FLOOR	—	TOP OF SLOPE, FRONT AND SIDEYARD
78.57	EXISTING PAVEMENT	—	EXISTING IMPROVEMENTS
78.57	PROPOSED ELEVATION	—	COURSES OF RETAINING WALL
78.57	FINISH GRADE	—	RETAINING WALL
78.57	TOP OF CURB	—	GARDEN WALL
78.57	FLOW LINE	—	WROUGHT IRON FENCE
78.57	EXISTING CONTOUR	—	2:1 SCARP
78.57	PROPOSED CONTOUR	—	MATCHLINE
78.57	PAD HIGH POINT	—	



- ENGINEER'S NOTES**
- 1) CONTRACTOR IS RESPONSIBLE FOR DUST AND EROSION CONTROL DURING CONSTRUCTION.
 - 2) SEE LANDSCAPE PLANS FOR LANDSCAPING AND ON-SITE IRRIGATION.
 - 3) SEE DETAIL SHEET FOR ON-SITE PAVEMENT SECTIONS. CONTRACTOR TO VERIFY WITH SOILS REPORT.
 - 4) ENGINEER TO BE NOTIFIED OF ANY DISCREPANCIES IMMEDIATELY.
 - 5) THESE PLANS SHALL NOT, IN PART OR IN WHOLE, BE USED FOR CONSTRUCTION UNTIL APPROVED AND SIGNED BY THE GOVERNING AGENCIES.
 - 6) CONTRACTOR TO MAINTAIN POSITIVE DRAINAGE AWAY FROM PROPOSED BUILDINGS.

BENCHMARK
 CITY OF LAS VEGAS BENCHMARK NO. 11V90 11SW.5
 RIVET AND PLATE IN TOP OF CURB, SOUTHEAST CORNER OF RAINBOW BLVD AND FLANAGAN DRIVE.
 ELEVATION = 724.3103 METERS (NAVD '88 PUBLISHED)
 ELEVATION = 2376.34 U.S. SURVEY FEET (NAVD '88 CALCULATED)
 PROJECT ELEVATION = 2376.52 U.S. SURVEY FEET

ENGINEER'S CERTIFICATE
 I CERTIFY THIS GRADING PLAN IS IN CONFORMANCE WITH THE APPROVED DRAINAGE STUDY FOR THIS PROJECT ON FILE AT THE CITY OF LAS VEGAS.
 Richard W. Cummings 7.2.03
 RICHARD W. CUMMINGS, PE NO. 5447 DATE

CONTRACTOR SHALL FIELD LOCATE AND PROTECT ALL SNWA/SNWS APPURTENANCES INCLUDING, BUT NOT LIMITED TO A/VAR, ACCESS MAINWAYS AND CATHODIC PROTECTION SYSTEMS. ALL ABOVE GROUND STRUCTURES AND AT GRADE STRUCTURES MUST BE ADJUSTED TO NEW GRADE AT CONTRACTOR'S EXPENSE. CATHODIC PROTECTION TEST STATIONS, RECTIFIERS, AND A/VAR'S MUST BE RELOCATED TO SIDEWALK PER SNWA STANDARDS AND AT CONTRACTOR'S EXPENSE. CONTRACTOR TO NOTIFY SOUTHERN NEVADA WATER AUTHORITY DEVELOPMENT PLAN REVIEW AT (702) 832-3444 AT LEAST 48 HOURS PRIOR TO CONSTRUCTION ACTIVITY.
 SOUTHERN NEVADA WATER AUTHORITY DATE
 SNWA APPROVAL IS VALID FOR ONE (1) YEAR FROM SIGNATURE DATE. IF CONSTRUCTION WITHIN THIS SCOPE OR RESTRICTED PIPE SAFETY ZONE IS NOT COMPLETE, PLANS MUST BE RESUBMITTED TO SNWA FOR APPROVAL.

RETAINING WALL CONVERSION TABLE

NO. COURSES	HEIGHT	STD. RETAINER	RET. ADJACENT TO SW
Δ 2	1.33'	0.70' - 0.80'	N/A
Δ 3	2.00'	0.84' - 1.50'	0.50' - 1.17'
Δ 4	2.67'	1.51' - 2.17'	1.18' - 1.83'
Δ 5	3.33'	2.18' - 2.83'	1.84' - 2.50'
Δ 6	4.00'	2.84' - 3.50'	2.51' - 3.17'
Δ 7	4.67'	3.51' - 4.17'	3.18' - 3.83'
Δ 8	5.33'	4.18' - 4.83'	3.84' - 4.50'
Δ 9	6.00'	4.84' - 5.50'	4.51' - 5.17'
Δ 10	6.67'	5.51' - 6.17'	5.18' - 5.83'
Δ 11	7.33'	6.18' - 6.83'	5.84' - 6.50'
Δ 12	8.00'	6.84' - 7.50'	6.51' - 7.17'

FARTHWORK QUANTITIES - UNIT 2
 CUT: 46,413 CY
 FILL (ADU): 80,152 CY
 NET DIFF: 33,739 CY (IMPORT)

CONSTRUCTION NOTES
 (A) CONSTRUCT "L" TYPE CURB PER STD. DWG. 216
 (B) CONSTRUCT CROSS GUTTER PER STD. DWG. 228

PRIVATE STREET NOTE
 NOTE: ALL PRIVATE STREETS ARE PUBLIC DRAINAGE EASEMENTS, CLV SEWER AND PUE EASEMENTS TO BE PRIVATELY MAINTAINED BY THE HOME OWNERS ASSOCIATION.

HDPE PIPE CONSTRUCTION NOTE:
 CONTRACTOR SHALL PROVIDE 30" MINIMUM COVER OVER HDPE PIPE PRIOR TO VEHICLE LOADING DURING CONSTRUCTION. TRENCH WIDTH MUST BE WIDE ENOUGH TO ACCOMMODATE COMPACTION EQUIPMENT. SEE MANUFACTURER'S GUIDELINES (PRODUCT NOTE 3.115) AND ASTM D3231. CONTRACTOR SHALL NOT USE HYDRO-HAMMER TYPE COMPACTORS OVER PIPE TRENCH AREA.

BASIS OF BEARING
 THE BASIS OF BEARING FOR THIS SURVEY IS THE WEST LINE OF THE SOUTHEAST QUARTER (SE 1/4) OF SECTION 15, TOWNSHIP 19 SOUTH, RANGE 60 EAST, M.D.M., CLARK COUNTY, NEVADA, AS SHOWN IN FILE 115, PAGE 13 OF OFFICIAL RECORDS, CLARK COUNTY, NEVADA, I.E. NORTH 00°11'55" EAST

DISCLAIMER NOTE
 EXISTING UTILITY LOCATIONS SHOWN HEREIN ARE APPROXIMATE ONLY. IT SHALL BE THE CONTRACTOR'S RESPONSIBILITY TO DETERMINE THE EXACT VERTICAL AND HORIZONTAL LOCATION OF ALL EXISTING UNDERGROUND UTILITIES PRIOR TO COMMENCING CONSTRUCTION. NO REPRESENTATION IS MADE THAT ALL EXISTING UTILITIES ARE SHOWN HEREON. THE ENGINEER ASSUMES NO RESPONSIBILITY FOR UTILITIES NOT SHOWN OR UTILITIES NOT SHOWN IN THEIR PROPER LOCATION.
 CALL BEFORE YOU DIG: 1-800-227-2600.

Call before you do Overhead
 1-702-593-6111
 Call before you dig.
 1-800-227-2600
 (NEVADA STATE BOARD OF EXAMINERS)

Stantec Consulting Inc.
 7251 West Charleston Blvd
 Las Vegas, NV, U.S.A.
 89117 702.258.0115
 Fax: 702.258.4936
 www.stantec.com

Pulte Homes
 PULTE HOMES
 WYETH RANCH UNIT 2
 GRADING PLAN 2

Professional Engineer
 RICHARD W. CUMMINGS
 CIVIL
 5447
 7.2.03

SHEET 4 OF 20

W:\Active\8817028\Drawings\unit 2 plans\02-GPI.dwg paltrow Wed, 02 Jul 2003 - 8:34am
 96273
 51887 36061
 K2