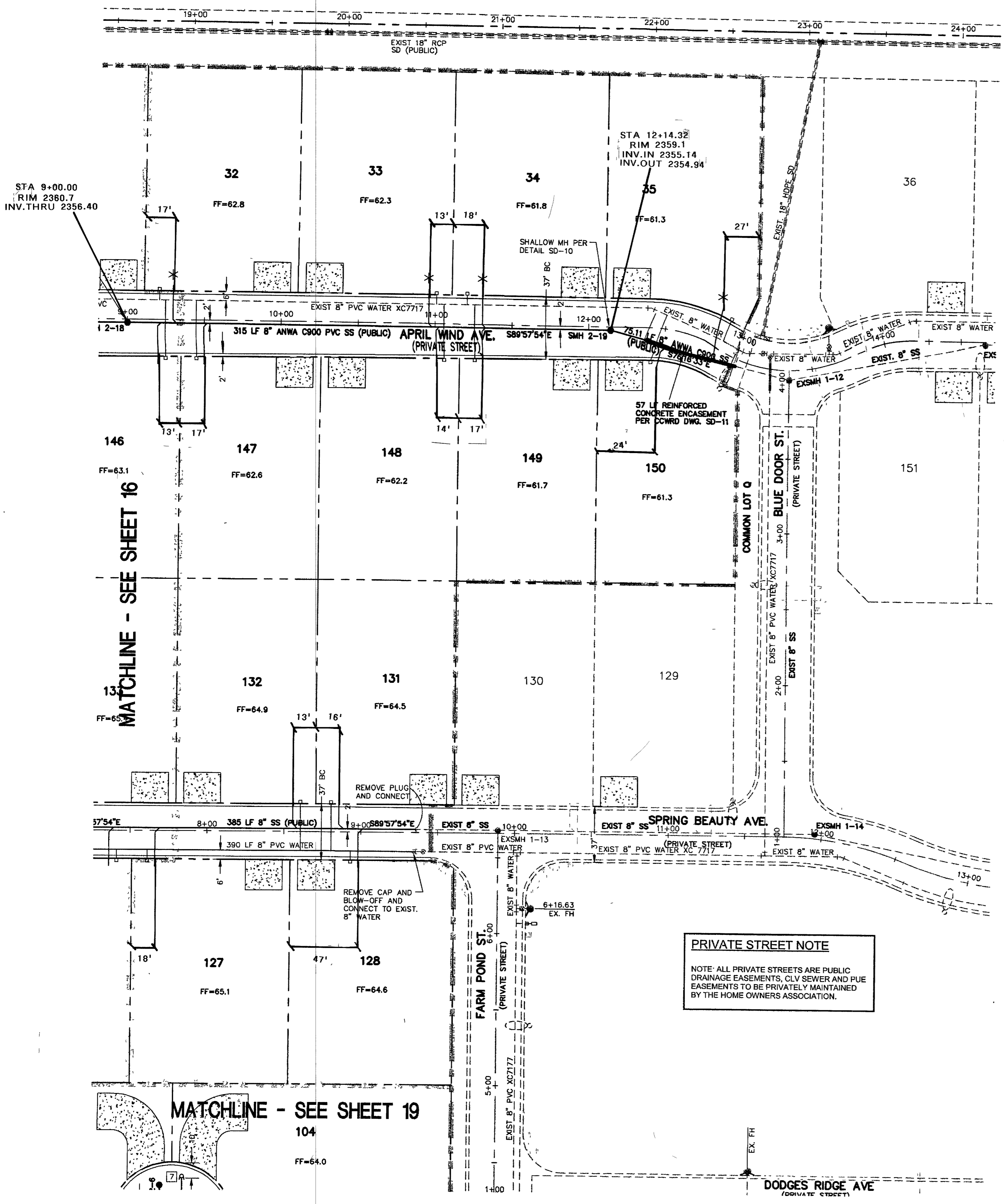


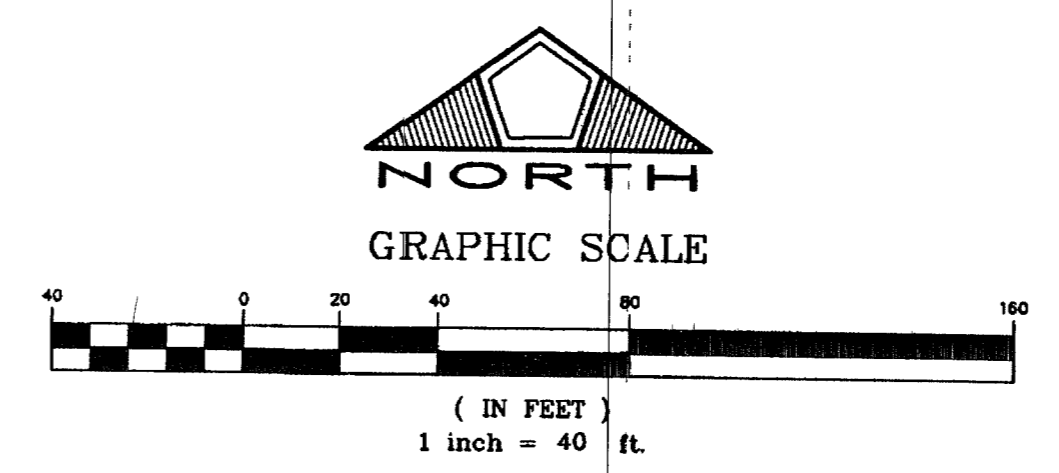
AS BUILT



EXISTING UNIT 1
PER CLV DWG. # 071-4699

PRIVATE STREET NOTE
NOTE: ALL PRIVATE STREETS ARE PUBLIC DRAINAGE EASEMENTS, CLV SEWER AND PUE EASEMENTS TO BE PRIVATELY MAINTAINED BY THE HOME OWNERS ASSOCIATION.

INSTALL 4" AWWA C900 PVC SS LATERALS PER UDACS 2.19.03 B2



MANHOLE SCHEDULE
SEE SHEET 19

NOTE:
INSTALL PIPELINE MARKER BALLS IN TRENCH ABOVE EACH HORIZONTAL ELBOW FITTING, PER MANUFACTURER INSTRUCTIONS.

- TRAFFIC LEGEND**
- L 9" D3 STREET NAME SIGN (PER STD DWG 250)
 - O 30" STOP SIGN (R1-1) LOCATE AT BCR
 - BLUE REFLECTIVE MARKER
 - ▽ STREET SIGN AS NOTED PER PLAN

APPROVALS

Robert Bell 6/10/03
CITY FIRE MARSHAL DATE

Patricia 7/18/03
LAS VEGAS VALLEY WATER DISTRICT DATE

- UTILITY LEGEND**
- EX 8" W EXISTING WATER LINE W/SIZE
 - 8" W PROPOSED WATER LINE W/SIZE
 - PROPOSED WATER LATERAL
 - PROPOSED FIRE HYDRANT W/6" LATERAL & 6" G.V.
 - EX 8" S EXISTING SEWER LINE W/SIZE
 - 8" S PROPOSED SEWER LINE W/SIZE
 - PROPOSED SEWER LATERAL
 - EXISTING SEWER MANHOLE
 - PROPOSED SEWER MANHOLE
 - 0" LIP DRIVEWAY
 - GATE VALVE
 - CONCRETE DRIVEWAY
 - 12" W 8" W WATER REDUCER
 - BWV REQUIRES BACKWATER VALVE
 - PRV REQUIRES PRESSURE REDUCER VALVE

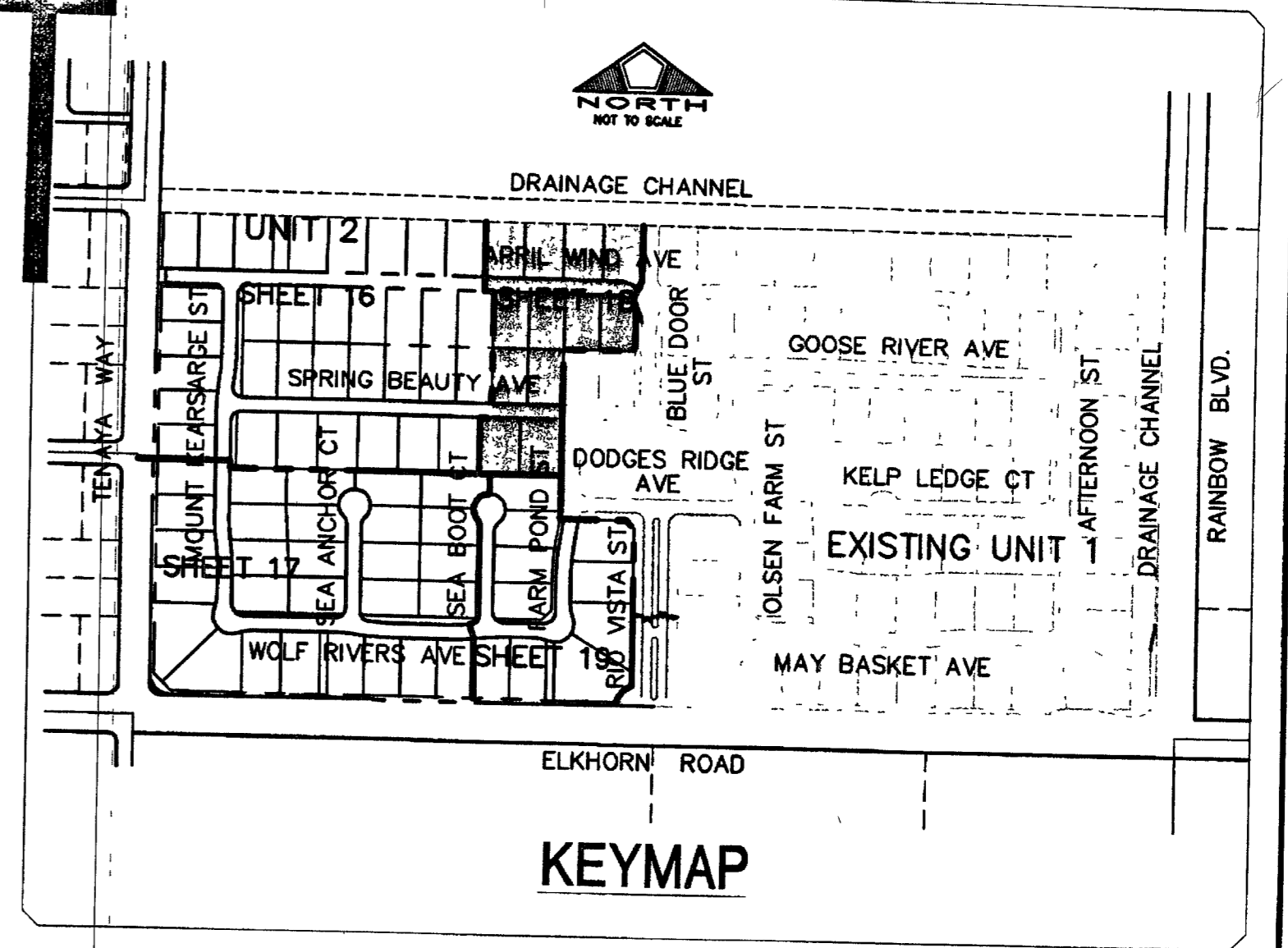
- WATER FITTINGS LEGEND:**
- 1 8" TEE
 - 2 8" 45° BEND
 - 3 8"x6" REDUCER
 - 4 8" 90° BEND
 - 5 8" GATE VALVE
 - 6 FIRE HYDRANT ASSY PER UDACS PLATE 7 INCLUDING 6" G.V.
 - 7 2" BLOW-OFF ASSEMBLY W/CAP PER UDACS PLATE 4

Avoid cutting underground utility lines. It's costly.
Call before you Dig.
1-800-227-2600
(UNDERGROUND SERVICE ALERT (USA))

Avoid hitting overhead power lines. It's costly.
Call before you do Overhead
1-702-593-6111

BENCHMARK
CITY OF LAS VEGAS BENCHMARK NO. 1LV90 11SW. RIVET AND PLATE IN TOP OF CURB, SOUTHEAST CORNER OF RAINBOW BLVD AND FLANAGAN DRIVE.
ELEVATION = 724.3103 METERS (NAVD '88 PUBLISHED)
ELEVATION = 2376.34 U.S. SURVEY FEET (NAVD '88 CALCULATED)
PROJECT ELEVATION = 2376.52 U.S. SURVEY FEET

BASIS OF BEARING
THE BASIS OF BEARING FOR THIS SURVEY IS THE WEST LINE OF THE SOUTHEAST QUARTER (SE 1/4) OF SECTION 15, TOWNSHIP 19 SOUTH, RANGE 60 EAST, M.D.M., CLARK COUNTY, NEVADA, AS SHOWN IN INSTRUCTIONS.



NO.	DESCRIPTION	DATE	AP'D
1			
2			
3			
4			
5			
6			
7			
8			
9			
10			

DATE: 6/9/2003
 S.L.Y.
 DRAWN BY: D.L.
 DESIGNED BY: R.P.S.
 CHECKED BY: R.M.C.
 ADA CHECKED:
 JOB NO.: 88147028
 SCALE: 1"=40'

Stantec Consulting Inc.
7251 West Charleston Blvd
Las Vegas NV U.S.A.
89117 702.258.0115
Tel: 702.258.4956
Fax: 702.258.4956
www.stantec.com

Pulte Homes
WYETH RANCH UNIT 2
UTILITY & TRAFFIC PLAN

AS BUILT

PROFESSIONAL ENGINEER STATE OF NEVADA
 RICHARD CHANDLER
 5447
 CIVIL
 6-9-03

SHEET
18
OF 20
10744699-2

W:\Active\86147028\Drawings\unit 2 plans\02-UTI.dwg Plotrow Mon, 09 Jun 2003 - 1:59pm