

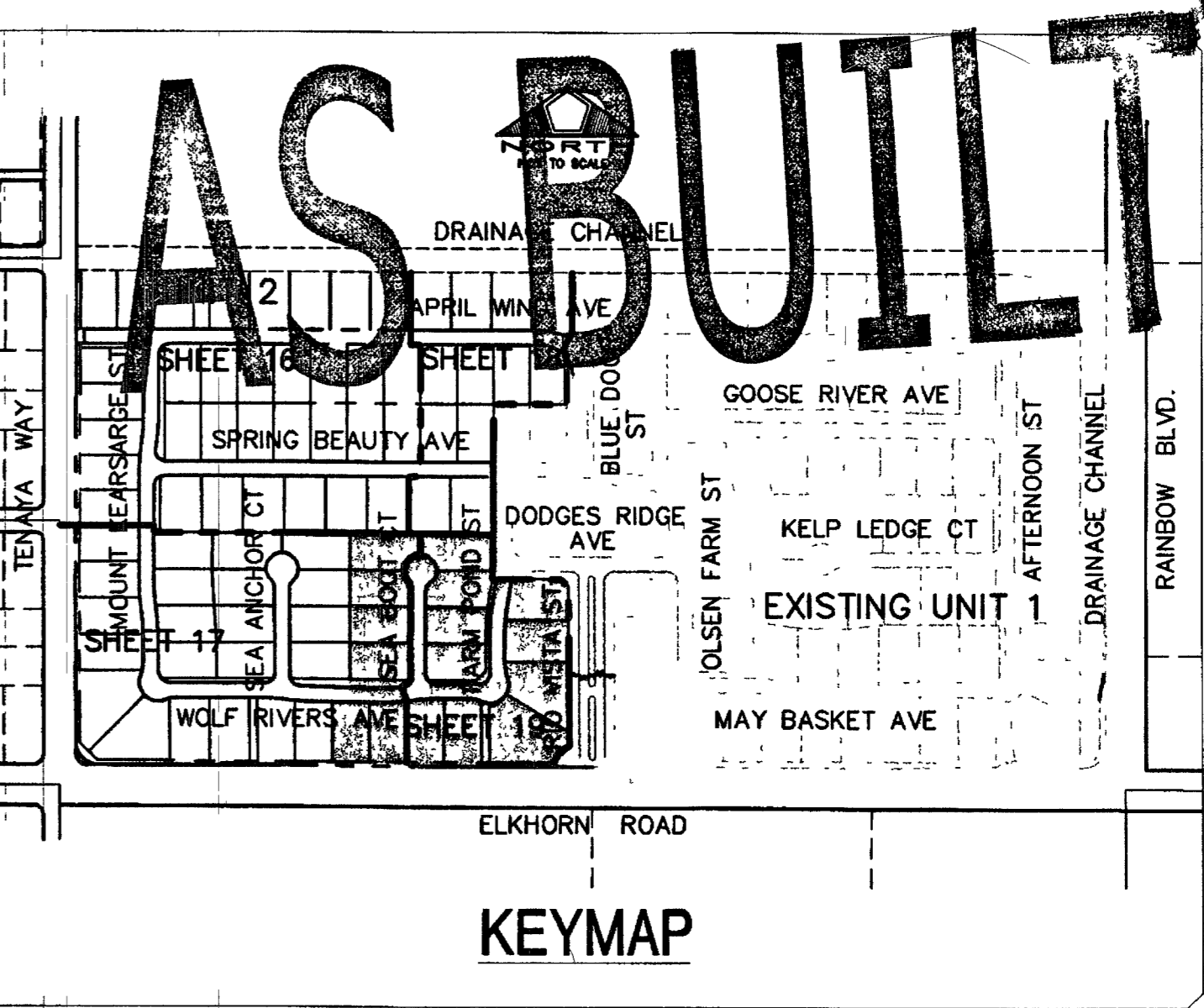
MATCHLINE - SEE SHEET 18



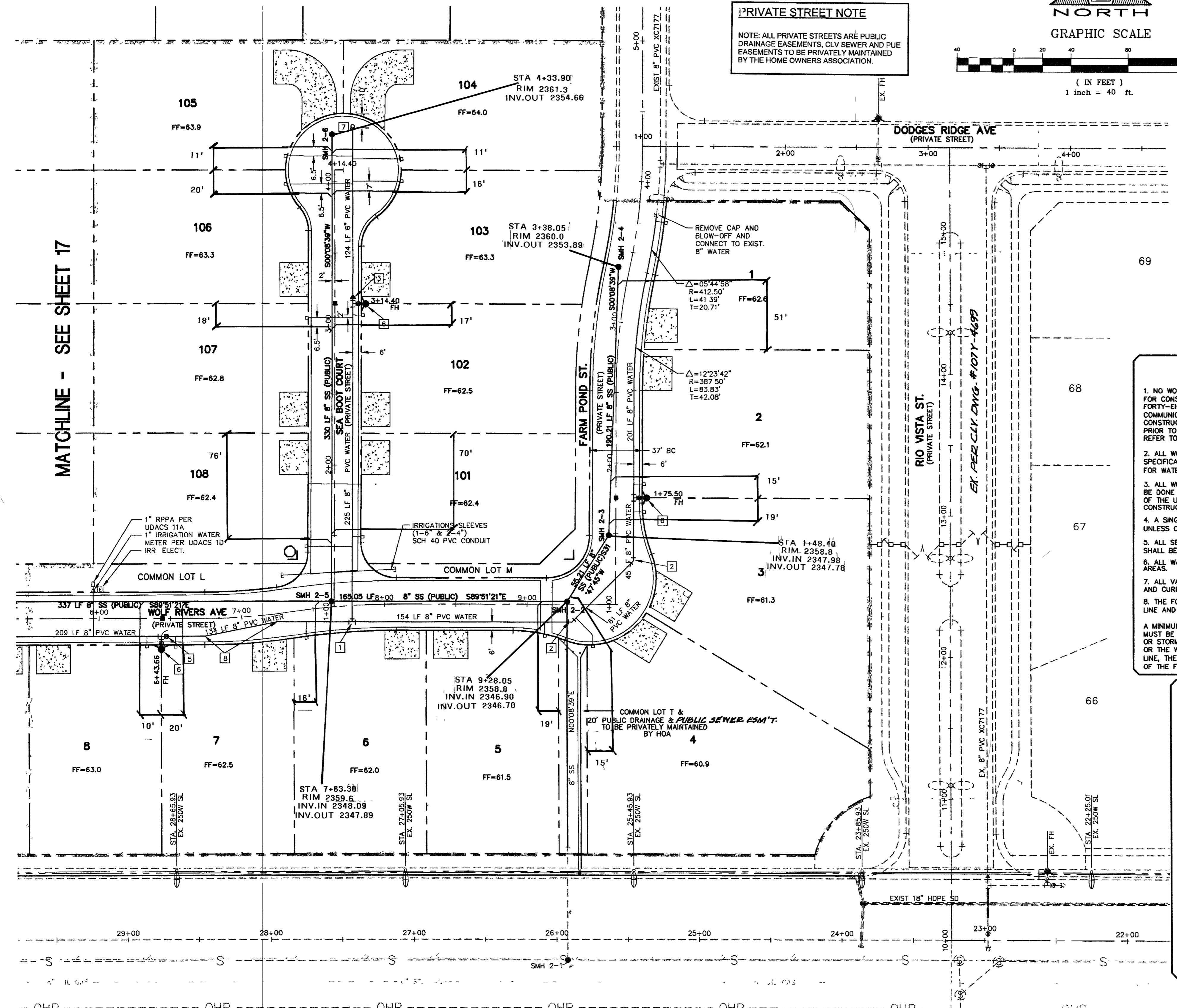
PRIVATE STREET NOTE
NOTE: ALL PRIVATE STREETS ARE PUBLIC DRAINAGE EASEMENTS, C/LY SEWER AND PUE EASEMENTS TO BE PRIVATELY MAINTAINED BY THE HOME OWNERS ASSOCIATION.

Call before you Dig.
1-800-227-2600
(Nevada Service Area Only)

Call before you do Overhead.
1-702-593-6111

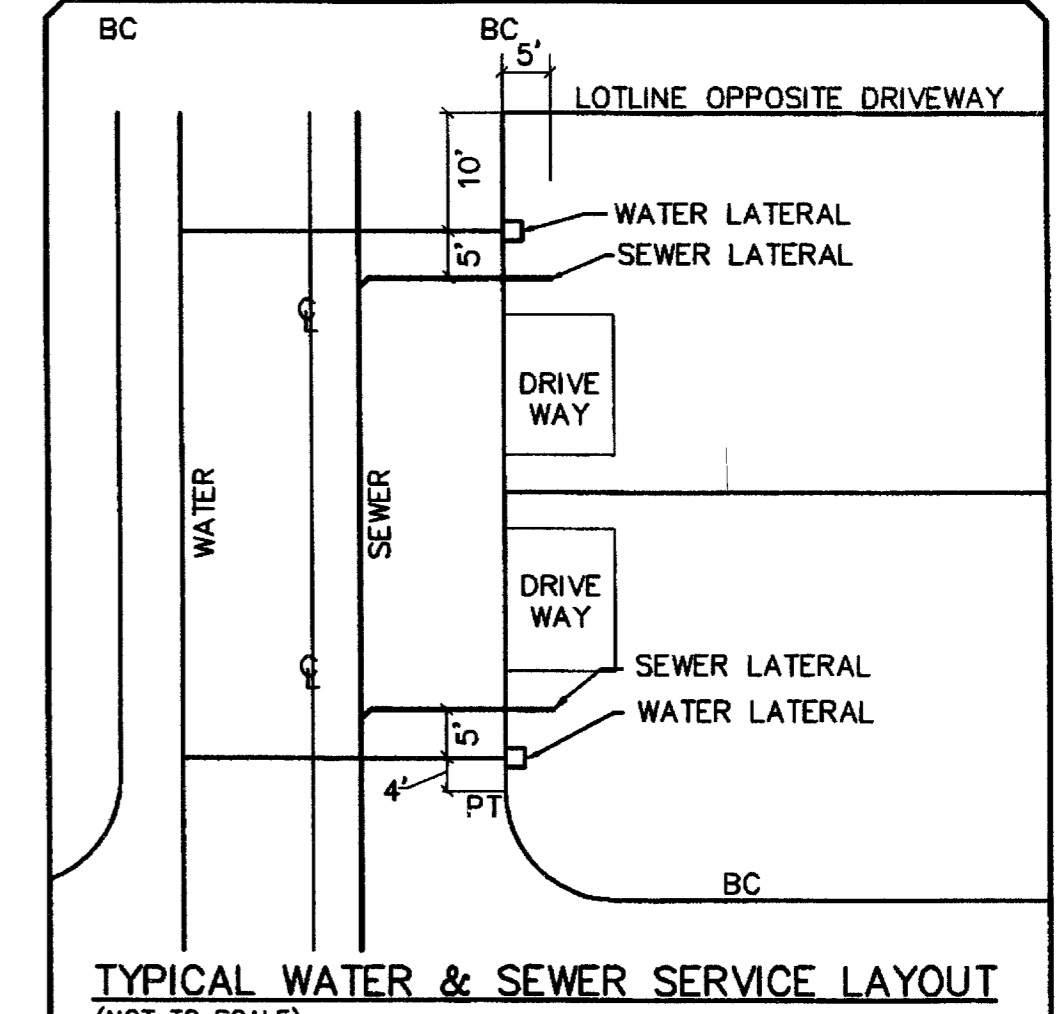
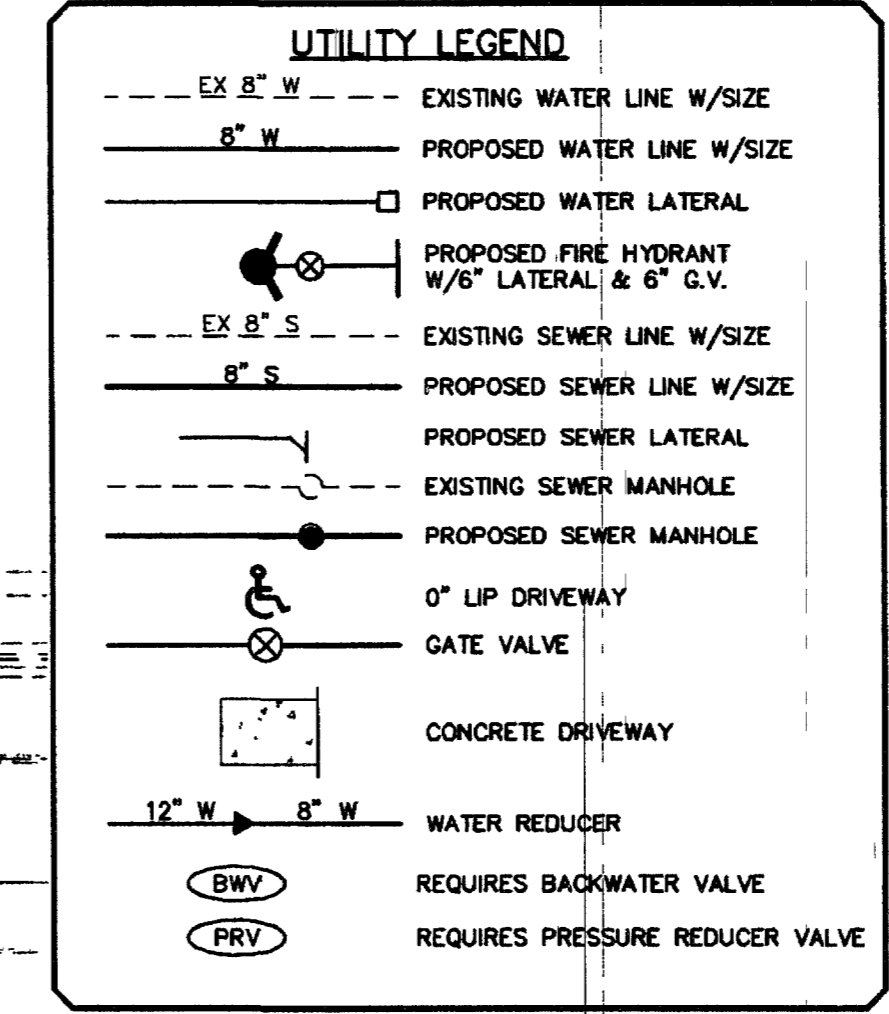


MATCHLINE - SEE SHEET 17



LVVWD NOTES
LVVWD PROJECT #27797

- NO WORK SHALL BEGIN UNTIL THE WATER PLANS HAVE BEEN RELEASED FOR CONSTRUCTION BY THE LVVWD. FOLLOWING WATER PLAN APPROVAL, FORTY-EIGHT (48) HOUR NOTICE SHALL BE GIVEN TO THE LVVWD COMMUNICATION SUPPORT CENTER (258-7171) PRIOR TO THE START OF CONSTRUCTION. NOTICE MUST BE GIVEN BY 2:00 P.M. THE BUSINESS DAY PRIOR TO A LVVWD INSPECTION. WHEN REQUESTING INSPECTION, PLEASE REFER TO THE PROJECT NUMBER IDENTIFIED ABOVE.
- ALL WORK SHALL CONFORM TO LVVWD STANDARD PLATES, DRAWING, AND SPECIFICATIONS AND THE UNIFORM DESIGN AND CONSTRUCTION STANDARDS FOR WATER DISTRIBUTION SYSTEMS (UDACS), LATEST EDITION.
- ALL WORK, EXCEPT AS MODIFIED BY THESE PLANS OR BY NOTE 2, SHALL BE DONE IN ACCORDANCE WITH THE MOST CURRENT DRAFT OR EDITION OF THE UNIFORM STANDARD SPECIFICATIONS FOR PUBLIC WORKS CONSTRUCTION OFF-SITE IMPROVEMENTS, CLARK COUNTY AREA.
- A SINGLE PIPE MATERIAL SHALL BE USED THROUGHOUT THE PROJECT, UNLESS OTHERWISE APPROVED BY THE LVVWD.
- ALL SERVICE LATERALS TWO INCHES (2") IN DIAMETER AND SMALLER SHALL BE COPPER TUBING WITH LVVWD APPROVED SERVICE SADDLES.
- ALL WATER METER BOXES SHALL BE LOCATED OUTSIDE OF DRIVEWAY AREAS.
- ALL VALVES SHALL BE LOCATED OUTSIDE OF DRIVEWAYS, VALLEY AND CURB GUTTERS.
- THE FOLLOWING REQUIREMENTS MUST BE MET IN THE EVENT A WATER LINE AND A SANITARY SEWER OR STORM SEWER LINE CROSS:
A MINIMUM EIGHTEEN INCH (18") VERTICAL SEPARATION (OUTSIDE TO OUTSIDE) MUST BE MAINTAINED WHEN THE WATER LINE IS INSTALLED OVER THE SANITARY OR STORM SEWER LINE. IF THE VERTICAL SEPARATION CANNOT BE MAINTAINED OR THE WATER LINE MUST BE PLACED UNDER THE SANITARY OR STORM SEWER LINE, THE SANITARY OR STORM SEWER LINE MUST BE CONSTRUCTED WITH ONE OF THE FOLLOWING OR, AS SHOWN ON THESE PLANS:
- POTABLE WATER SUPPLY QUALITY MATERIAL
B. ENCASUREMENT WITH FOUR INCH (4") CONCRETE (MINIMUM)
C. SLEEVING WITH POTABLE WATER SUPPLY QUALITY MATERIAL
- EACH PROVISION MUST EXTEND ALONG THE SANITARY OR STORM SEWER, ON EITHER SIDE OF THE WATER MAIN, A MINIMUM TEN FOOT (10') DISTANCE PERPENDICULAR TO THE EXTERIOR OF MAIN.
- WARNING TAPE SHALL BE REQUIRED OVER ALL MAINS, ALL SIX INCH (6") DIAMETER AND LARGER SERVICE LATERALS, AND ANY SERVICE LATERAL NOT INSTALLED PERPENDICULAR TO THE MAIN IN ACCORDANCE WITH STANDARD PLATE NO. 27.
- ALL WATER FACILITIES SHALL BE FILLED, DISINFECTED, PRESSURE TESTED, FLUSHED, FILLED AND AN ACCEPTABLE WATER SAMPLE OBTAINED PRIOR TO CONNECTION TO THE LVVWD'S DISTRIBUTION SYSTEM.
- THE CONTRACTOR MUST OBTAIN ALL METERS TWO INCHES (2") AND SMALLER FROM LVVWD CENTRAL STORES. TELEPHONE 258-3152 FORTY-EIGHT (48) HOURS PRIOR TO PICK-UP.
- CONSTRUCTION MAY INTERRUPT SERVICE, WITH LVVWD APPROVAL AND PROPER NOTIFICATION, BETWEEN THE HOURS OF 10:00 P.M. AND 6:00 A.M. SUNDAY THROUGH THURSDAY. CIRCUMSTANCES MAY REQUIRE A TEMPORARY SERVICE FEED BE INSTALLED, WITHOUT LVVWD REMBURSEMENT, ANY TEMPORARY SERVICE FEED MUST HAVE APRIOR LVVWD APPROVAL.
- ALL WATER FACILITY CONSTRUCTION MATERIALS USED MUST BE AS LISTED ON THE LVVWD'S PRE-APPROVED MATERIALS AND MANUFACTURERS LISTING FOR NEW FACILITIES. LATEST REVISION OR SPECIFICALLY APPROVED ON THESE PLANS.



BENCHMARK
CITY OF LAS VEGAS BENCHMARK NO. 1L190 115WS.
RIVET AND PLATE IN TOP OF CURB, SOUTHEAST CORNER OF RAINBOW BLVD AND FLANAGAN DRIVE.
ELEVATION = 724.3103 METERS (NAVD '88 PUBLISHED)
ELEVATION = 2376.34 U.S. SURVEY FEET (NAVD '88 CALCULATED)
PROJECT ELEVATION = 2376.32 U.S. SURVEY FEET

SANITARY SEWER MANHOLE SCHEDULE

| M/H # | TYPE | STATION | OFFSET | RIW EL | IN INV EL | IN INV EL | IN INV EL | IN INV EL | COMMENTS |
|-------|------|----------|----------|--------|-----------|-----------|-----------|-----------|--------------|
| 1-1 | SD-1 | 25+11.31 | 4.00 LF | 2356.6 | 2344.17 | --- | --- | --- | |
| 2-2 | SD-1 | 9+28.05 | 2.0 LF | 2358.8 | --- | 2346.70 | 2346.90 | 2346.90 | |
| 2-3 | SD-1 | 14+48.40 | 4.00 LF | 2358.8 | 2347.98 | --- | --- | --- | |
| 2-4 | SD-1 | 3+38.05 | 4.00 LF | 2358.8 | --- | 2353.89 | --- | --- | |
| 2-5 | SD-1 | 7+63.30 | 4.00 LF | 2359.6 | --- | 2348.09 | 2347.89 | --- | |
| 2-6 | SD-1 | 4+33.90 | 2.0 LF | 2361.3 | --- | 2354.66 | --- | --- | |
| 2-7 | SD-1 | 4+24.74 | 2.0 LF | 2361.3 | --- | 2350.38 | 2350.18 | --- | |
| 2-8 | SD-1 | 4+33.90 | 2.0 LF | 2363.2 | --- | 2356.51 | --- | --- | |
| 2-9 | SD-1 | 14+02.00 | 2.0 LF | 2362.0 | 2352.38 | --- | --- | --- | |
| 2-10 | SD-1 | 3+82.51 | 8.58' RT | 2363.8 | 2354.32 | --- | --- | --- | THRU MANHOLE |
| 2-11 | SD-1 | 6+65.63 | 8.58' RT | 2365.5 | 2356.08 | --- | --- | --- | THRU MANHOLE |
| 2-12 | SD-1 | 14+72.00 | 2.0 RT | 2365.8 | --- | 2359.68 | --- | --- | |
| 2-13 | SD-1 | 5+52.00 | 2.0 RT | 2364.8 | --- | 2357.17 | 2357.37 | --- | |
| 2-14 | SD-1 | 9+35.67 | 8.33' RT | 2364.0 | --- | 2357.90 | --- | --- | |
| 2-15 | SD-1 | 2+78.09 | 2.0 RT | 2363.7 | --- | 2359.74 | --- | --- | THRU MANHOLE |
| 2-16 | SD-1 | 11+45.70 | 2.0 RT | 2364.6 | --- | 2360.52 | --- | --- | |
| 2-17 | SD-1 | 6+00.00 | 2.0 RT | 2362.2 | --- | 2357.60 | 2357.80 | --- | |
| 2-18 | SD-1 | 9+00.00 | 2.0 RT | 2360.7 | --- | 2356.40 | --- | --- | THRU MANHOLE |
| 2-19 | SD-1 | 12+14.32 | 2.0 RT | 2359.1 | --- | 2354.94 | 2355.14 | --- | |

WATER FITTINGS LEGEND:

- 8" TEE
- 8" 45° BEND
- 8"x6" REDUCER
- 8" 90° BEND
- 8" GATE VALVE
- FIRE HYDRANT ASSY. PER UDACS PLATE 7 INCLUDING 6" G.V.
- 2" BLOW-OFF ASSEMBLY W/CAP PER UDACS PLATE 4
- 8" 11.25° BEND

ESTIMATE OF WATER QUANTITIES

| | |
|---|-----------|
| 6" PVC WATER MAIN | 340 LF. |
| 8" PVC WATER MAIN | 2,702 LF. |
| 3/4" WATER METER (FROM LVVWD) W/ 1" COPPER SERVICE (UDACS PLATE 1D) | 83 EA. |
| 1" WATER METER (IRRIGATION) | 1 EA. |
| W/ 1" COPPER SERVICE (UDACS PLATE 1D) | |
| 1" R.P.P.A. (IRRIGATION) (UDACS PLATE 11A) | 1 EA. |
| 2" BLOW-OFF ASSEMBLY W/CAP | 2 EA. |
| 8" TEE | 3 EA. |
| 8" x 6" REDUCER | 2 EA. |
| STD. FIRE HYDRANT ASSEMBLY W/ 6" LATERAL, 6" GATE VALVE | 9 EA. |
| 8" GATE VALVE | 4 EA. |
| 45° BEND | 4 EA. |

NOTE: QUANTITIES ARE APPROXIMATE ONLY - CONTRACTOR TO VERIFY.

REDUCED PRESSURE PRINCIPLE ASSEMBLY
APPROVED REDUCED PRESSURE PRINCIPLE ASSEMBLY(S) SHALL BE INSTALLED PER THE UDACS PLATE NO. 11A. NO WATER SHALL BE TAKEN FROM A SERVICE REQUIRING BACKFLOW PREVENTION UNTIL THE REDUCED PRESSURE PRINCIPLE ASSEMBLY HAS BEEN SUCCESSFULLY TESTED BY THE LVVWD.
ANY BLOCK WALL OR OTHER FENCE MATERIAL SHALL BE DESIGNED AND CONSTRUCTED AROUND THE OUTSIDE OF THE EASEMENT(S) TO ALLOW THE DISTRICT DIRECT ACCESS FROM THE ADJACENT RIGHT-OF-WAY.

BASIS OF BEARING
THE BASIS OF BEARING FOR THIS SURVEY IS THE WEST LINE OF THE SOUTHEAST QUARTER (SE 1/4) OF SECTION 15, TOWNSHIP 19 SOUTH, RANGE 80 EAST, M.D.M., CLARK COUNTY, NEVADA, AS SHOWN IN FILE 115, PAGE 13 OF OFFICIAL RECORDS, CLARK COUNTY, NEVADA, I.E. NORTH 001°55' EAST

TRAFFIC LEGEND

- 9" D3 STREET NAME SIGN (PER STD DWG 250) AT BCR
- 30" STOP SIGN (R-1) LOCATE AT BCR
- BLUE REFLECTIVE MARKER
- STREET SIGN AS NOTED PER PLAN

APPROVALS

Robert Bell
CITY FIRE MARSHAL
6/10/03
DATE

7/10/03
DATE

DATE: 6/9/2003
DRAWN BY: D.L.
DESIGNED BY: R.P.S.
CHECKED BY: R.W.C.
JOB NO.: 8817028
SCALE: 1"=40'

Stantec Consulting Inc.
7251 West Charleston Blvd.
Las Vegas NV U.S.A.
89117
Tel: 702.258.0115
Fax: 702.258.4956
www.stantec.com

Stantec

Pulte Homes
WYETH RANCH UNIT
UTILITY & TRAFFIC PLANS
AS BUILT

PROFESSIONAL ENGINEER - STATE OF NEVADA
RICHARD W. GUNLOCK
64112-3104
CIVIL
5447

SHEET 19 OF 20
1674469-2