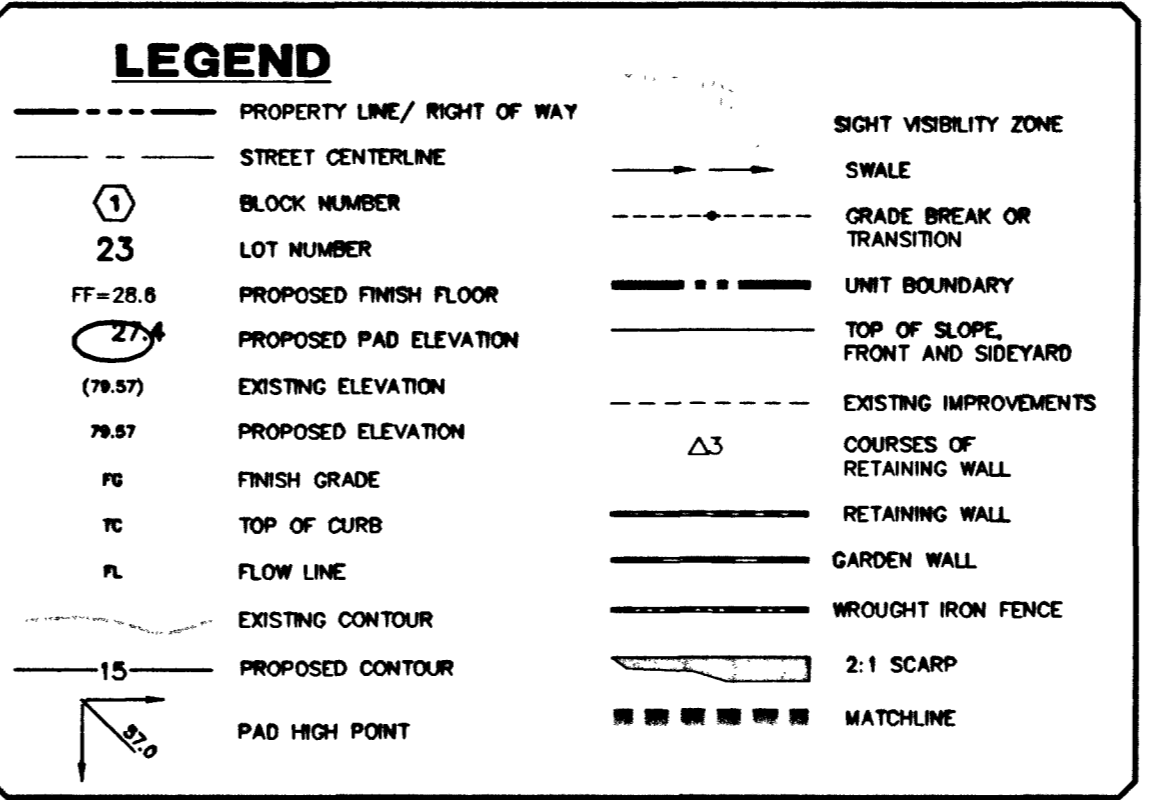
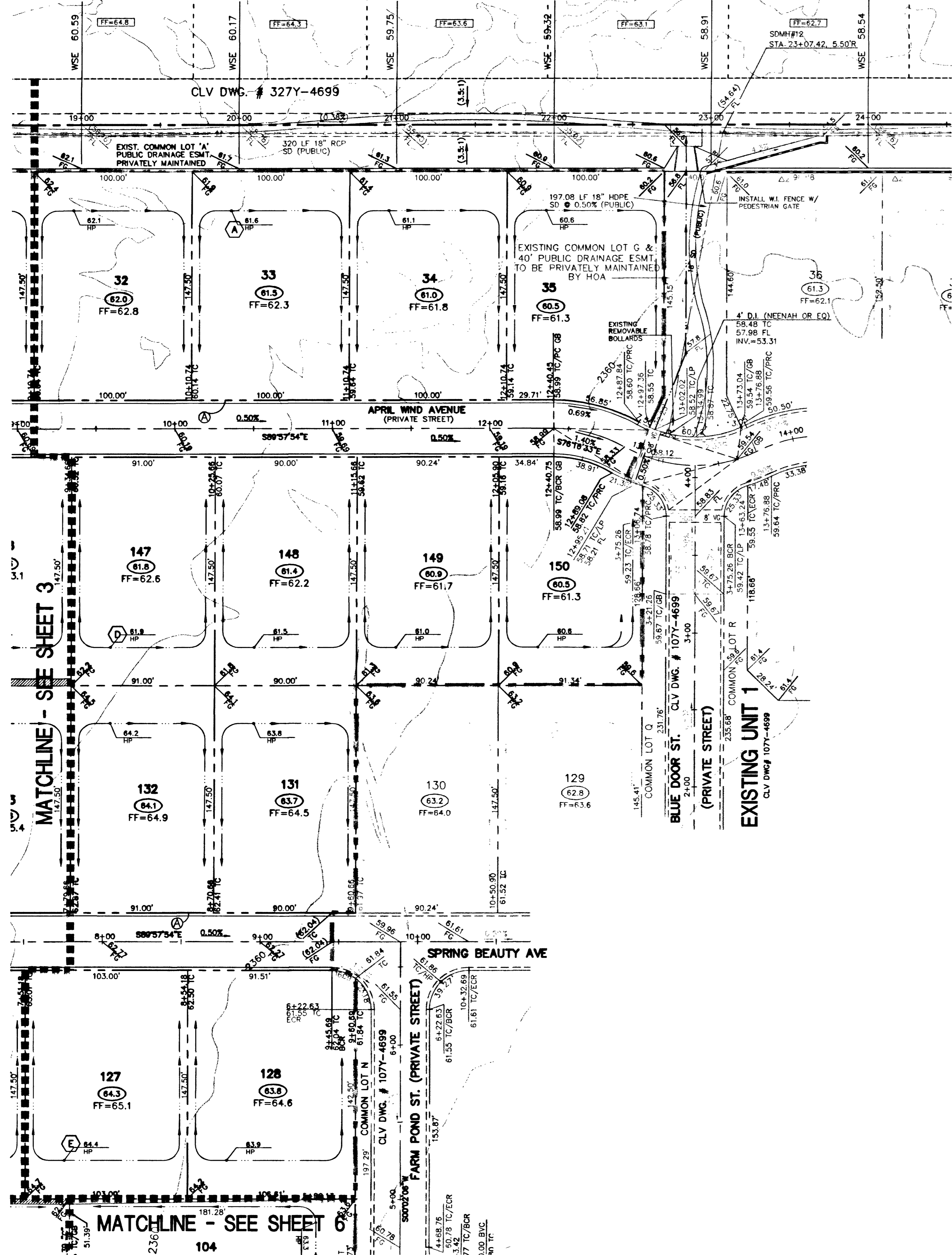
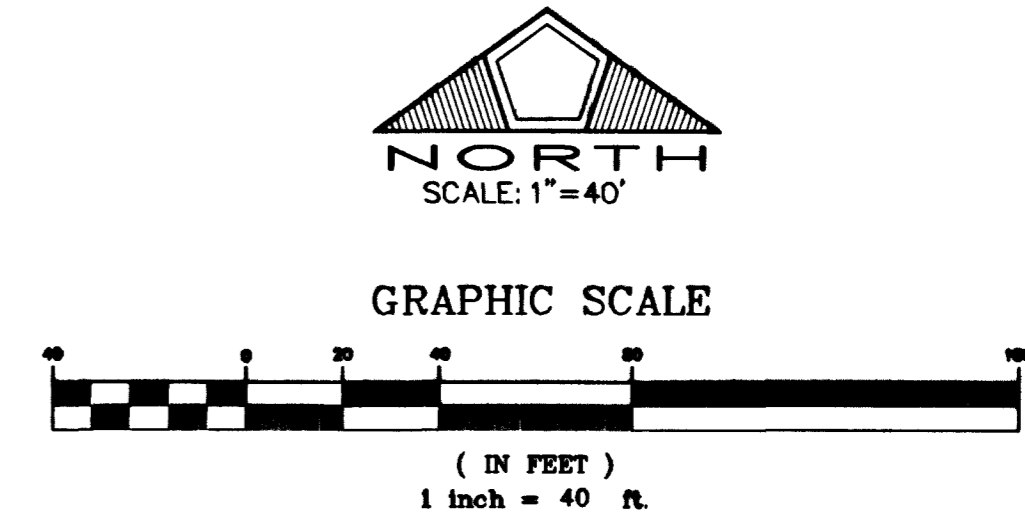
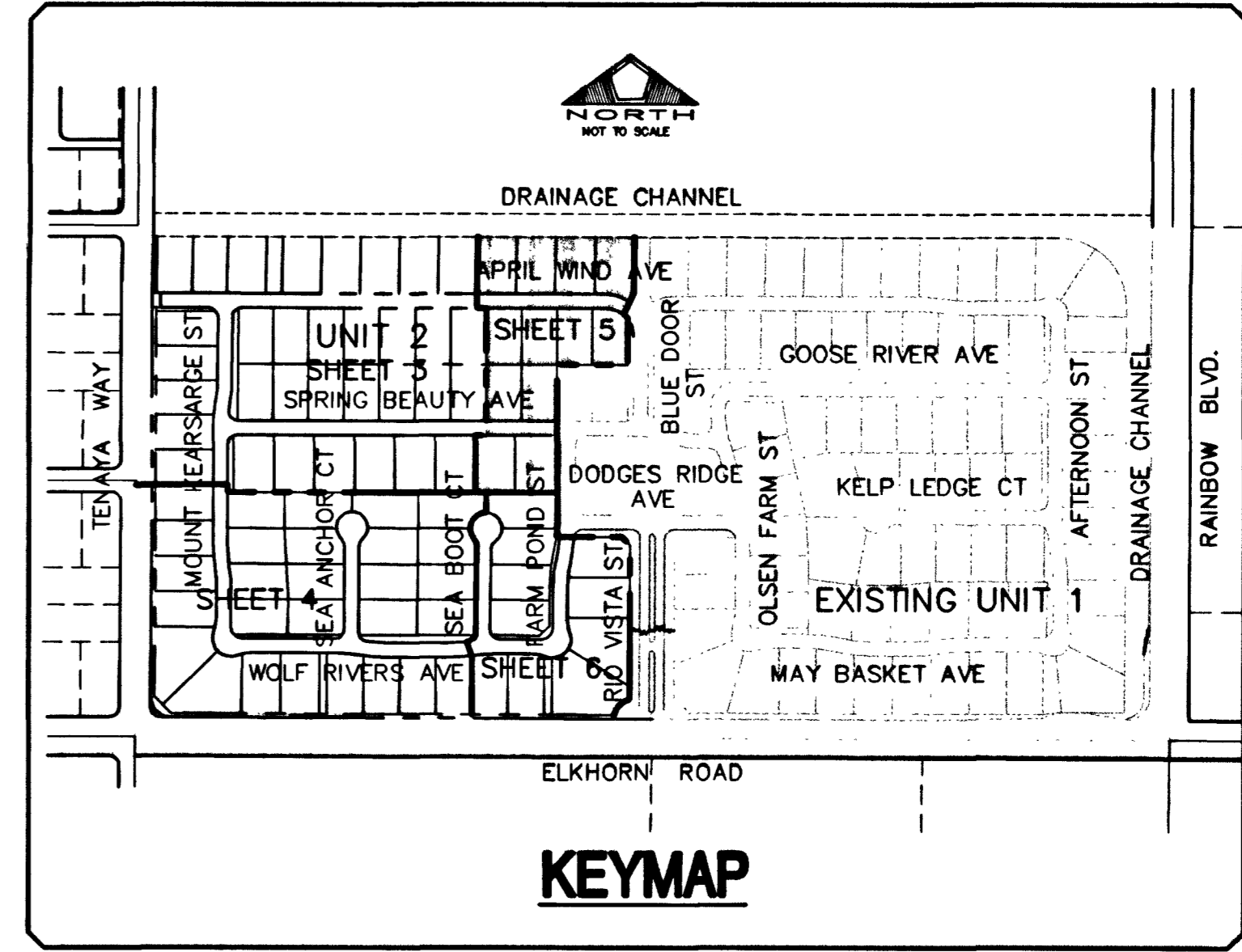


PROPOSED BELLA VISTA DEVELOPMENT BY OTHERS
APN 125-15-701-001



DISCLAIMER NOTE

EXISTING UTILITY LOCATIONS SHOWN HEREIN ARE APPROXIMATE ONLY. IT SHALL BE THE CONTRACTOR'S RESPONSIBILITY TO DETERMINE THE EXACT VERTICAL AND HORIZONTAL LOCATION OF ALL EXISTING UNDERGROUND UTILITIES PRIOR TO COMMENCING CONSTRUCTION. NO REPRESENTATION IS MADE THAT ALL EXISTING UTILITIES ARE SHOWN HEREON. THE ENGINEER ASSUMES NO RESPONSIBILITY FOR UTILITIES NOT SHOWN OR UTILITIES NOT SHOWN IN THEIR PROPER LOCATION.
CALL BEFORE YOU DIG: 1-800-227-2800.



BENCHMARK

CITY OF LAS VEGAS BENCHMARK NO. 11V90 11SW5. RIVET AND PLATE IN TOP OF CURB, SOUTHEAST CORNER OF RAINBOW BLVD AND FLANAGAN DRIVE.
ELEVATION = 724.3103 METERS (NAVD '88 PUBLISHED)
ELEVATION = 2376.34 U.S. SURVEY FEET (NAVD '88 CALCULATED)
PROJECT ELEVATION = 2376.52 U.S. SURVEY FEET

- ### ENGINEER'S NOTES
- 1) CONTRACTOR IS RESPONSIBLE FOR DUST AND EROSION CONTROL DURING CONSTRUCTION.
 - 2) SEE LANDSCAPE PLANS FOR LANDSCAPING AND ON-SITE IRRIGATION.
 - 3) SEE DETAIL SHEET FOR ONSITE PAVEMENT SECTIONS. CONTRACTOR TO VERIFY WITH SOILS REPORT.
 - 4) ENGINEER TO BE NOTIFIED OF ANY DISCREPANCIES IMMEDIATELY.
 - 5) THESE PLANS SHALL NOT, IN PART OR IN WHOLE, BE USED FOR CONSTRUCTION UNTIL APPROVED AND SIGNED BY THE GOVERNING AGENCIES.
 - 6) CONTRACTOR TO MAINTAIN POSITIVE DRAINAGE AWAY FROM PROPOSED BUILDINGS.

EARTHWORK QUANTITIES - UNIT 2

CUT: 46,413 CY
FILL (ADJ.): 80,152 CY
NET DIFF: 33,739 CY (IMPORT)

- ### CONSTRUCTION NOTES
- CONSTRUCT "L" TYPE CURB PER STD. DWG. 216
 - CONSTRUCT CROSS GUTTER PER STD. DWG. 228

RETAINING WALL CONVERSION TABLE

NO. COURSES	HEIGHT	STD. RETAINER	RET. ADJACENT TO SW
Δ 2	1.33'	0.70' - 0.80'	N/A
Δ 3	2.00'	0.84' - 1.50'	0.50' - 1.17'
Δ 4	2.67'	1.51' - 2.17'	1.18' - 1.83'
Δ 5	3.33'	2.18' - 2.83'	1.84' - 2.50'
Δ 6	4.00'	2.84' - 3.50'	2.51' - 3.17'
Δ 7	4.67'	3.51' - 4.17'	3.18' - 3.83'
Δ 8	5.33'	4.18' - 4.83'	3.84' - 4.50'
Δ 9	6.00'	4.84' - 5.50'	4.51' - 5.17'
Δ 10	6.67'	5.51' - 6.17'	5.18' - 5.83'
Δ 11	7.33'	6.18' - 6.83'	5.84' - 6.50'
Δ 12	8.00'	6.84' - 7.50'	6.51' - 7.17'

BASIS OF BEARING

THE BASIS OF BEARING FOR THIS SURVEY IS THE WEST LINE OF THE SOUTHEAST QUARTER (SE 1/4) OF SECTION 15, TOWNSHIP 19 SOUTH, RANGE 80 EAST, M.D.M., CLARK COUNTY, NEVADA, AS SHOWN IN FILE 115, PAGE 13 OF OFFICIAL RECORDS, CLARK COUNTY, NEVADA. I.E. NORTH 00°11'55" EAST

ENGINEER'S CERTIFICATE

I CERTIFY THIS GRADING PLAN IS IN CONFORMANCE WITH THE APPROVED DRAINAGE STUDY FOR THIS PROJECT ON FILE AT THE CITY OF LAS VEGAS.
Richard W. Cummock 7.2.03
RICHARD W. CUMMOCK, PE NO. 5447 DATE

PRIVATE STREET NOTE

NOTE: ALL PRIVATE STREETS ARE PUBLIC DRAINAGE EASEMENTS, CLV SEWER AND PUE EASEMENTS TO BE PRIVATELY MAINTAINED BY THE HOME OWNERS ASSOCIATION.

HDPE PIPE CONSTRUCTION NOTE:

CONTRACTOR SHALL PROVIDE 30" MINIMUM COVER OVER HDPE PIPE PRIOR TO VEHICLE LOADING DURING CONSTRUCTION. TRENCH WIDTH MUST BE WIDE ENOUGH TO ACCOMMODATE COMPACTOR EQUIPMENT. SEE MANUFACTURER'S GUIDELINES (PRODUCT NOTE 3.115) AND ASTM D2321. CONTRACTOR SHALL NOT USE HYDRO-HAMMER TYPE COMPACTORS OVER PIPE TRENCH AREA.

Avoid hitting overhead power lines. It's costly.
Call before you do Overhead
1-702-593-6111

Avoid cutting underground utility lines. It's costly.
Call before you Dig.
1-800-227-2800
UNDERGROUND SERVICE ALERT (USA)

DATE: 7/2/2003	S.L.Y.	NO. DESCRIPTION	DATE	APP'D
PM: S.L.Y.	D.L.			
DRAWN BY: R.P.S.	R.W.C.			
CHECKED BY: R.W.C.	R.W.C.			
ADA CHECKED:				
JOB NO.: 8817028				
SCALE: 1"=40'				

Stantec Consulting Inc.
7251 West Charleston Blvd
Las Vegas NV U.S.A.
89117
Tel: 702.258.0115
Fax: 702.258.4956
www.stantec.com

Pulte
1635 VILLAGE CENTER CIRCLE, SUITE 250
LAS VEGAS, NEVADA 89134
(702) 258-7900

PULTE HOMES
WYETH RANCH UNIT 2
GRADING PLAN 3

RICHARD W. CUMMOCK
REGISTERED PROFESSIONAL ENGINEER - STATE OF NEVADA
NO. 5447
7.2.03

SHEET 5 OF 20
1574499-7