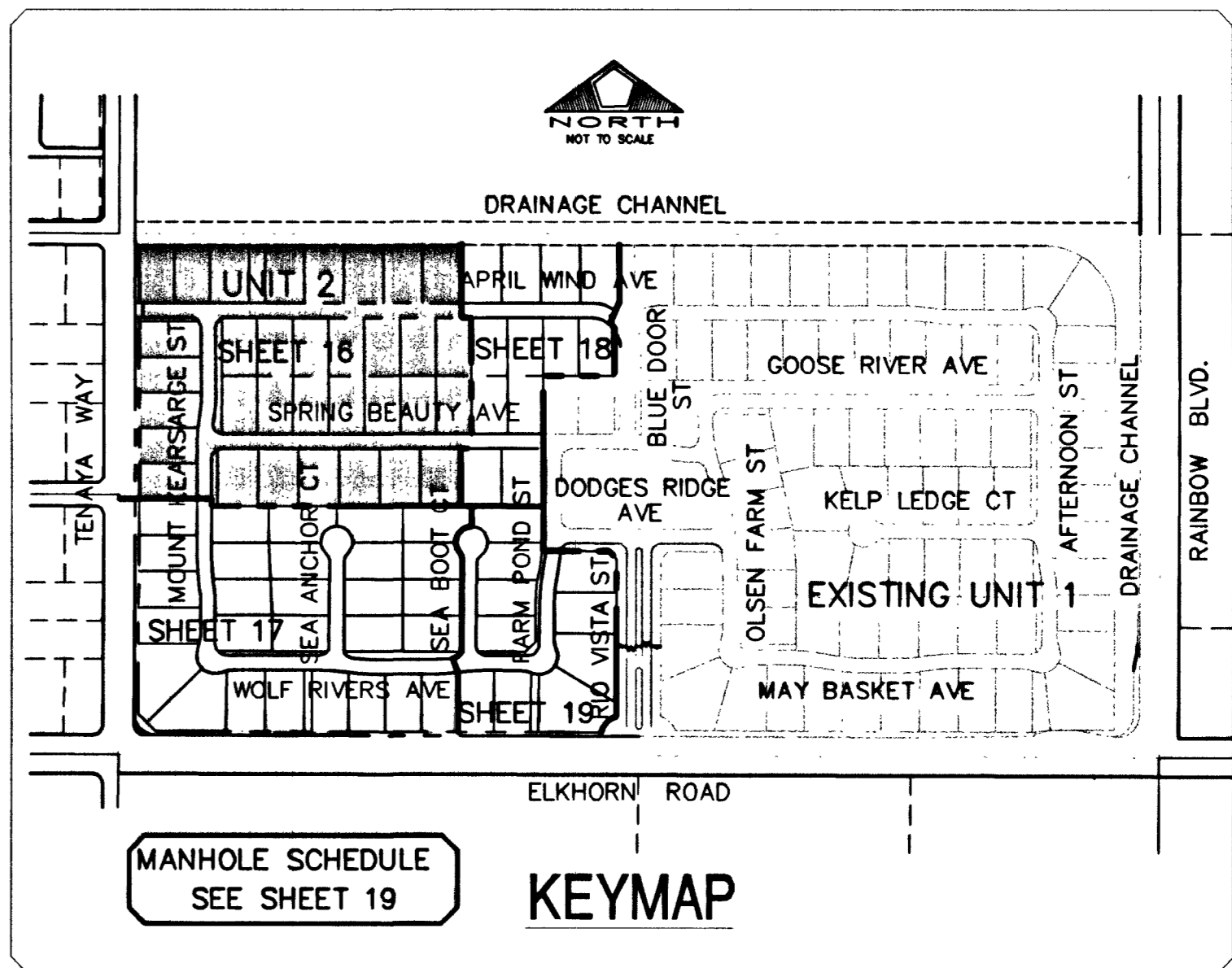


PROPOSED BELLA VISTA DEVELOPMENT BY OTHERS
APN 125-15-701-001

CONTRACTOR SHALL FIELD LOCATE AND PROTECT ALL SNWA/SNWS APPURTENANCES INCLUDING, BUT NOT LIMITED TO AV/AR ACCESS MANWAYS AND CATHODIC PROTECTION SYSTEMS. ALL ABOVE GROUND STRUCTURES AND AT GRADE STRUCTURES MUST BE ADJUSTED TO NEW GRADE AT CONTRACTOR'S EXPENSE. CATHODIC PROTECTION TEST STATIONS, RECTIFIERS, AND AV/AR'S MUST BE RELOCATED TO SIDEWALK PER SNWA STANDARDS AND AT CONTRACTOR'S EXPENSE. CONTRACTOR TO NOTIFY SOUTHERN NEVADA WATER AUTHORITY DEVELOPMENT PLAN REVIEW AT (702) 832-3444 AT LEAST 48 HOURS PRIOR TO CONSTRUCTION ACTIVITY.

SOUTHERN NEVADA WATER AUTHORITY DATE
SNWA APPROVAL IS VALID FOR ONE (1) YEAR FROM SIGNATURE DATE. IF CONSTRUCTION WITHIN THE EASEMENT OR RESTRICTED PIPE SAFETY ZONE IS NOT COMPLETE, PLANS MUST BE RESUBMITTED TO SNWA FOR RE-EVALUATION.



MANHOLE SCHEDULE
SEE SHEET 19

Southern Nevada Water Authority (SNWA) facilities are located in the area of this project and it is required that they be included in the coordination and approval process PRIOR to District signature. If you have not already done so, you may contact SNWA at:
Southern Nevada Water Authority
1900 E. Flamingo Road, Suite 170
Las Vegas, NV 89119
(702) 862-3444 Fax (702) 862-3485 ESNR.038

- WATER FITTINGS LEGEND:**
- 1 8" TEE
 - 2 8" 45° BEND
 - 3 8"x6" REDUCER
 - 4 8" 90° BEND
 - 5 8" GATE VALVE
 - 6 FIRE HYDRANT ASSY. PER UDACS PLATE 7 INCLUDING 6" G.V.
 - 7 2" BLOW-OFF ASSEMBLY W/CAP PER UDACS PLATE 4

FIRE FLOW CALCULATIONS

FIRE FLOW REQUIREMENTS IS: 1,750 GALLONS PER MINUTE AT 20 PSI RESIDUAL PRESSURE.

BASED ON: 4800 SF SQUARE FOOTAGE

LARGEST AREA BETWEEN 4-HOUR AREA SEPARATION WALLS: N/A

BUILDING HEIGHT: 20' ±

NUMBER OF STORES: ONE-STORY

TYPE OF CONSTRUCTION: TYPE 5 MR

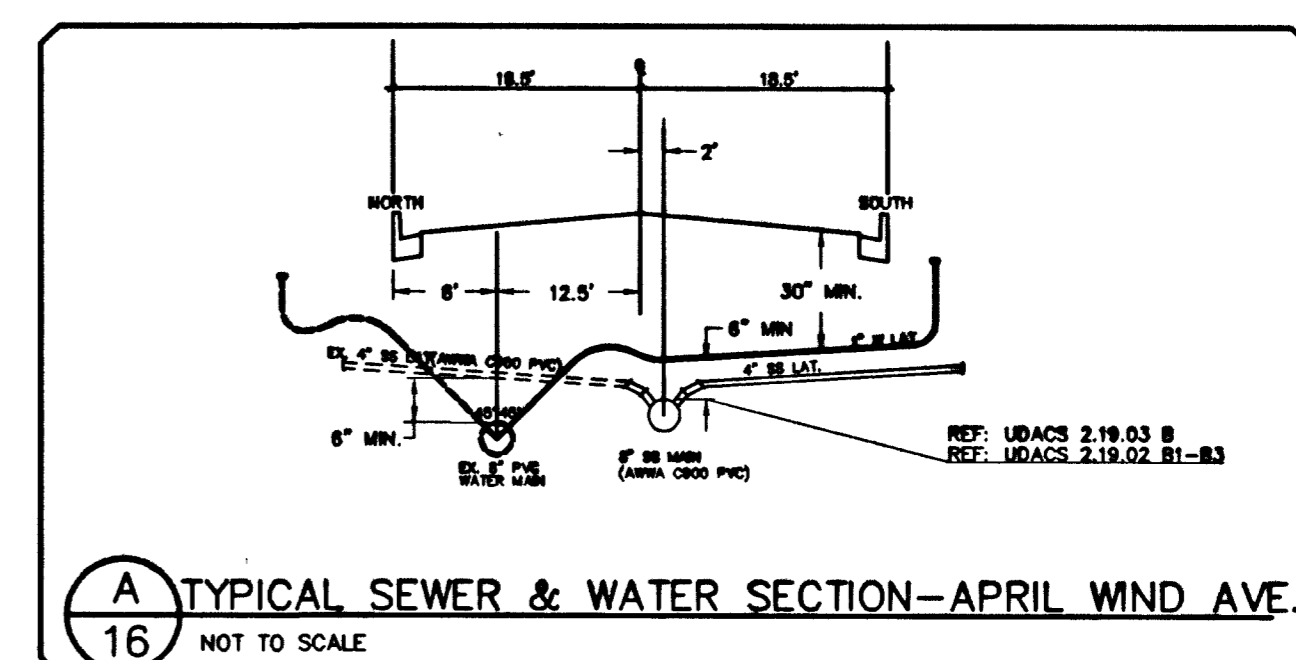
OCCUPANCY: SINGLE-FAMILY

FULL AUTOMATIC FIRE SPRINKLER SYSTEM: NONE

REVIEWED BY: *Ruo* DATE: 6/10/03

BASIS OF BEARING

THE BASIS OF BEARING FOR THIS SURVEY IS THE WEST LINE OF THE SOUTHEAST QUARTER (SE 1/4) OF SECTION 15, TOWNSHIP 19 SOUTH, RANGE 60 EAST, M.D.M., CLARK COUNTY, NEVADA, AS SHOWN IN



NOTE: INSTALL PIPELINE MARKER BALLS IN TRENCH ABOVE EACH HORIZONTAL ELBOW FITTING, PER MANUFACTURER INSTRUCTIONS.

- UTILITY LEGEND**
- EX 8" W --- EXISTING WATER LINE W/SIZE
 - 8" W --- PROPOSED WATER LINE W/SIZE
 - PROPOSED WATER LATERAL
 - EX 8" S --- EXISTING SEWER LINE W/SIZE
 - 8" S --- PROPOSED SEWER LINE W/SIZE
 - PROPOSED SEWER LATERAL
 - EXISTING SEWER MANHOLE
 - PROPOSED SEWER MANHOLE
 - 0" LP DRIVEWAY
 - GATE VALVE
 - CONCRETE DRIVEWAY
 - 12" W --- 8" W WATER REDUCER
 - (BW) --- REQUIRES BACKWATER VALVE
 - (PRV) --- REQUIRES PRESSURE REDUCER VALVE

ESTIMATE OF WATER QUANTITIES

8" PVC WATER MAIN	433 L.F.
8" PVC WATER MAIN	3,265 L.F.
3/4" WATER METER (FROM LVWD)	63 EA.
W/ 1" COPPER SERVICE (UDACS PLATE ID)	
1" WATER METER (IRRIGATION) W/ 1" COPPER SERVICE (UDACS PLATE ID)	1 EA.
1" R.P.P.A. (IRRIGATION) (UDACS PLATE 11A)	1 EA.
2" BLOW-OFF ASSEMBLY W/CAP	2 EA.
8" TEE	3 EA.
8" x 6" REDUCER	2 EA.
STD. FIRE HYDRANT ASSEMBLY W/ 6" LATERAL, 6" GATE VALVE	9 EA.
8" GATE VALVE	4 EA.
45° BEND	4 EA.

NOTE: QUANTITIES ARE APPROXIMATE ONLY- CONTRACTOR TO VERIFY.

PRIVATE STREET NOTE

NOTE: ALL PRIVATE STREETS ARE PUBLIC DRAINAGE EASEMENTS, CLV SEWER AND PUE EASEMENTS TO BE PRIVATELY MAINTAINED BY THE HOME OWNERS ASSOCIATION.

MATCHLINE - SEE SHEET 17

Call before you dig. 1-800-227-2600

Call before you dig. 1-702-593-6111

INSTALL 4" AWWA C900 PVC SS LATERALS. PER UDACS 2.12.03. E2.

Service laterals for lots: 24-31 and lots 140-146 will be topped on existing main by Owner's contractor under direction of the LVWD. ESN.039

BENCHMARK

CITY OF LAS VEGAS BENCHMARK NO. 11V90 11SW. RIVET AND PLATE IN TOP OF CURB, SOUTHEAST CORNER OF RAINBOW BLVD AND FLANAGAN DRIVE.

ELEVATION = 724.3103 METERS (NAVD '88 PUBLISHED)

ELEVATION = 2376.34 U.S. SURVEY FEET (NAVD '88 CALCULATED)

PROJECT ELEVATION = 2376.52 U.S. SURVEY FEET

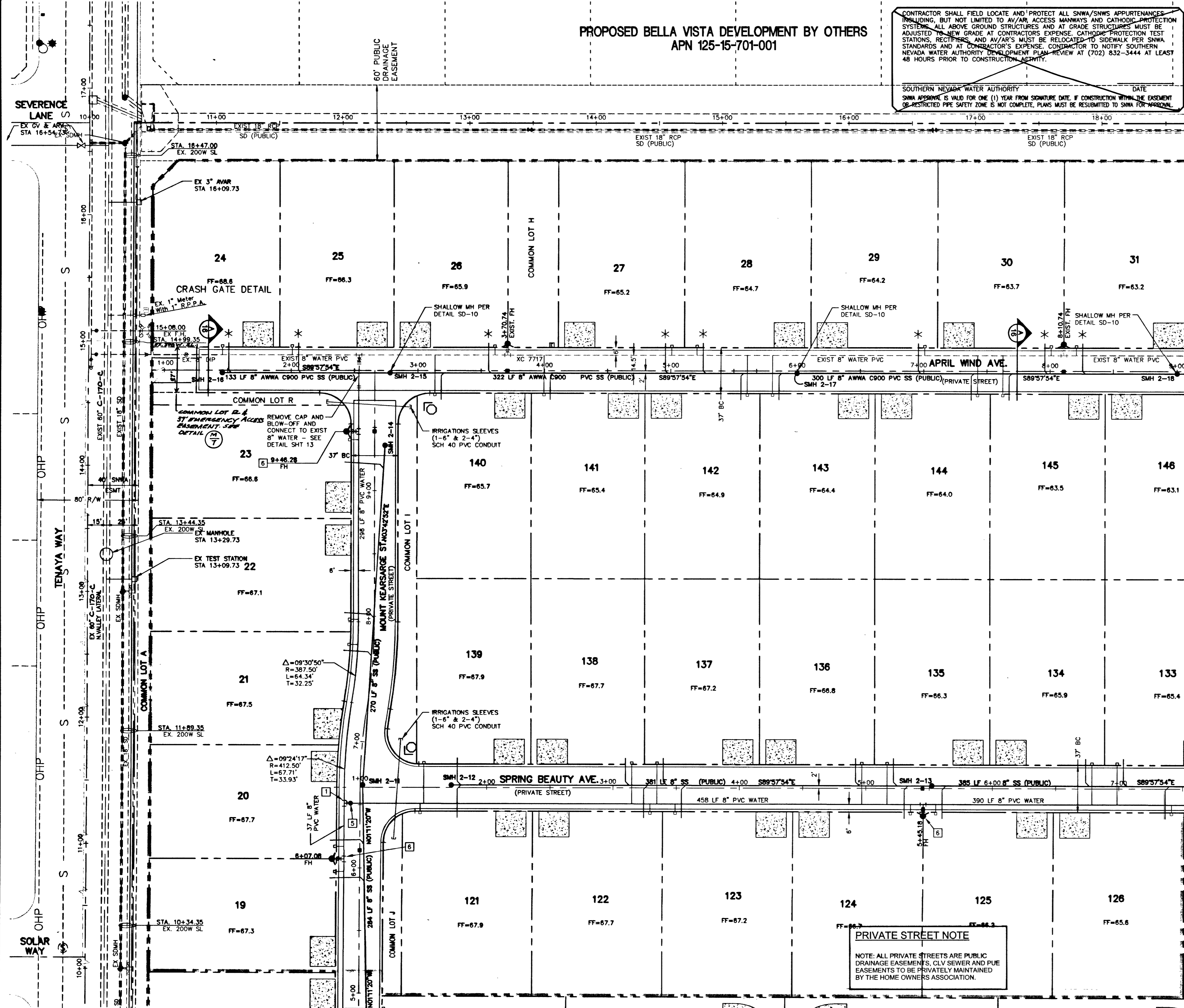
TRAFFIC LEGEND

- 9" D3 STREET NAME SIGN (PER STD DWG 250)
- 30" STOP SIGN (R1-1) LOCATE AT BCR
- BLUE REFLECTIVE MARKER
- STREET SIGN AS NOTED PER PLAN

APPROVALS

Robert Bell
CITY FIRE MARSHAL
DATE: 6/10/03

Patricia
LAS VEGAS VALLEY WATER DISTRICT
DATE: 7/18/03



PROJECT NAME: *Wyeth Ranch Unit 2*
SHEET: *9, 10, 13, 16, 20* | *Block 2777*

This project water plan complies with the Las Vegas Valley Water District's technical requirements. However, this water plan is **NOT APPROVED FOR CONSTRUCTION** at this time and the signature does not provide or imply a water commitment.

LVWD DATE: 6/10/03 ESN.062

SEWER AVERAGE DAILY FLOWS = 0.021 MGD
PEAK FLOWS = 0.060 MGD

54899 55560

NORTH GRAPHIC SCALE
(IN FEET)
1 Inch = 40 ft.

DATE: 6/9/2003
DRAWN BY: D.L.
DESIGNED BY: R.P.S.
CHECKED BY: R.W.C.
JOB NO.: 88147028
SCALE: 1"=40'

Stanlec Consulting Inc.
7251 West Charleston Blvd.
Las Vegas NV U.S.A.
89117
Tel: 702.258.0115
Fax: 702.258.4956
www.stanlec.com

Pulte Homes
1835 VILLAGE CENTER CIRCLE, SUITE 200
LAS VEGAS, NEVADA 89134
(702) 256-7900

PULTE HOMES
WYETH RANCH UNIT 2
UTILITY & TRAFFIC PLAN 1

PROFESSIONAL ENGINEER - STATE OF NEVADA
RICHARD W. CLUMMOCK
Exp. No. 5447
6-9-03

SHEET 16 OF 20
16744699-2