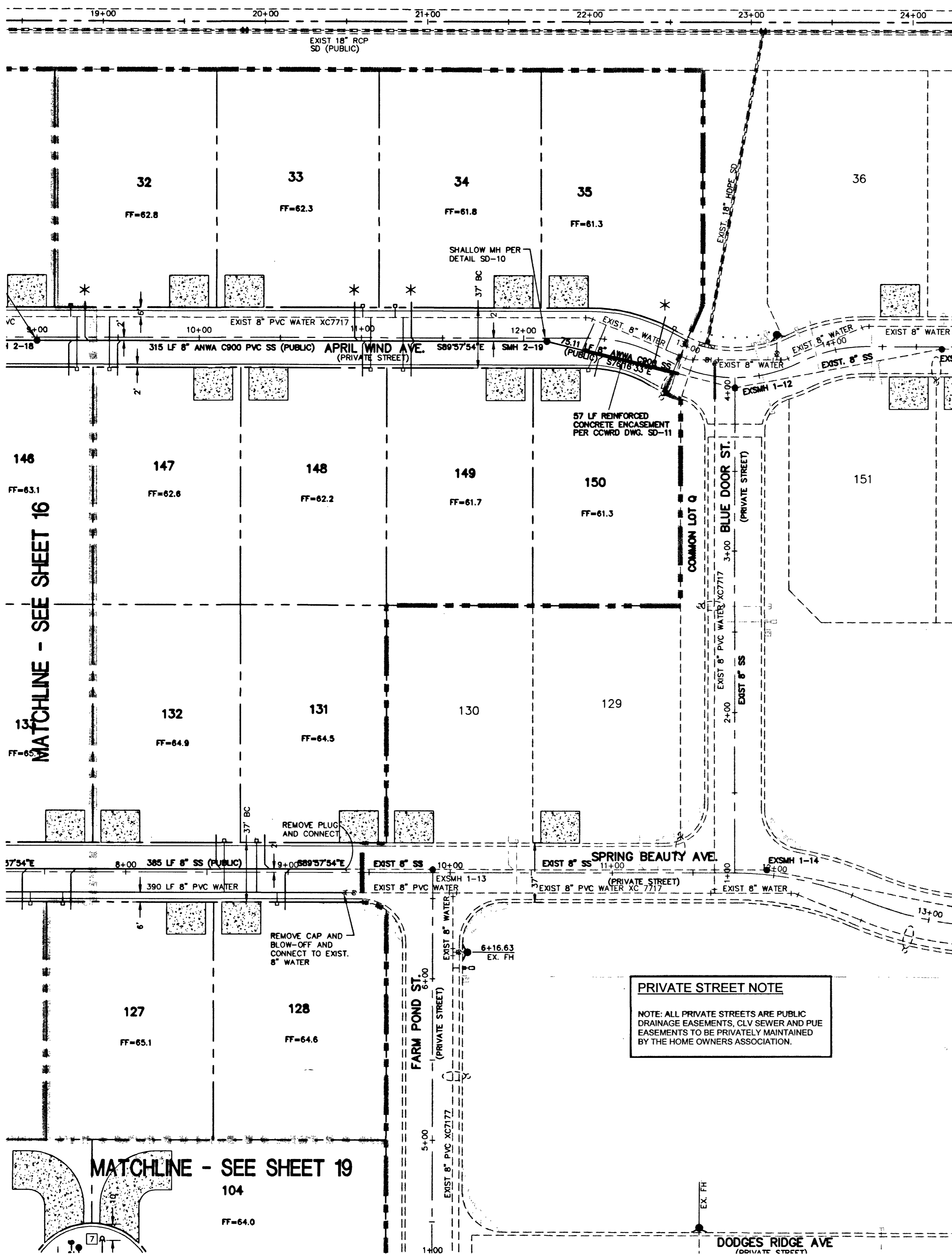


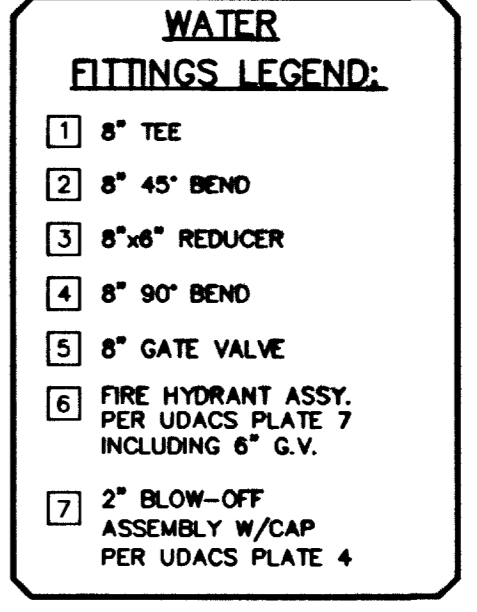
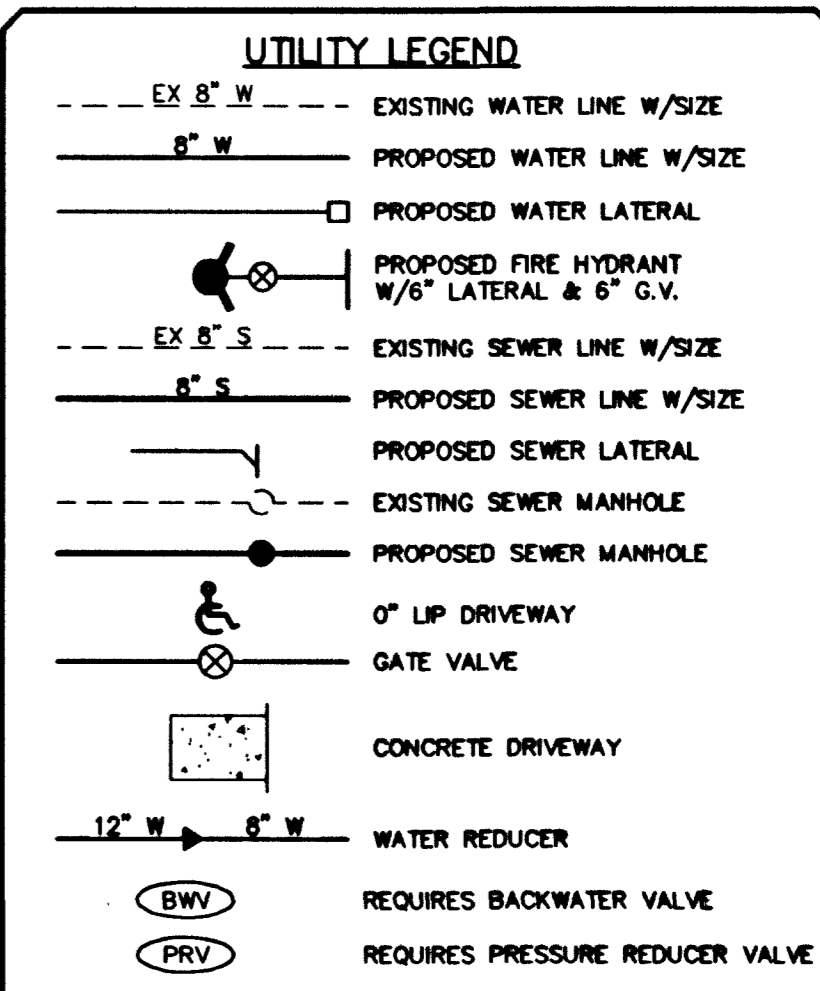
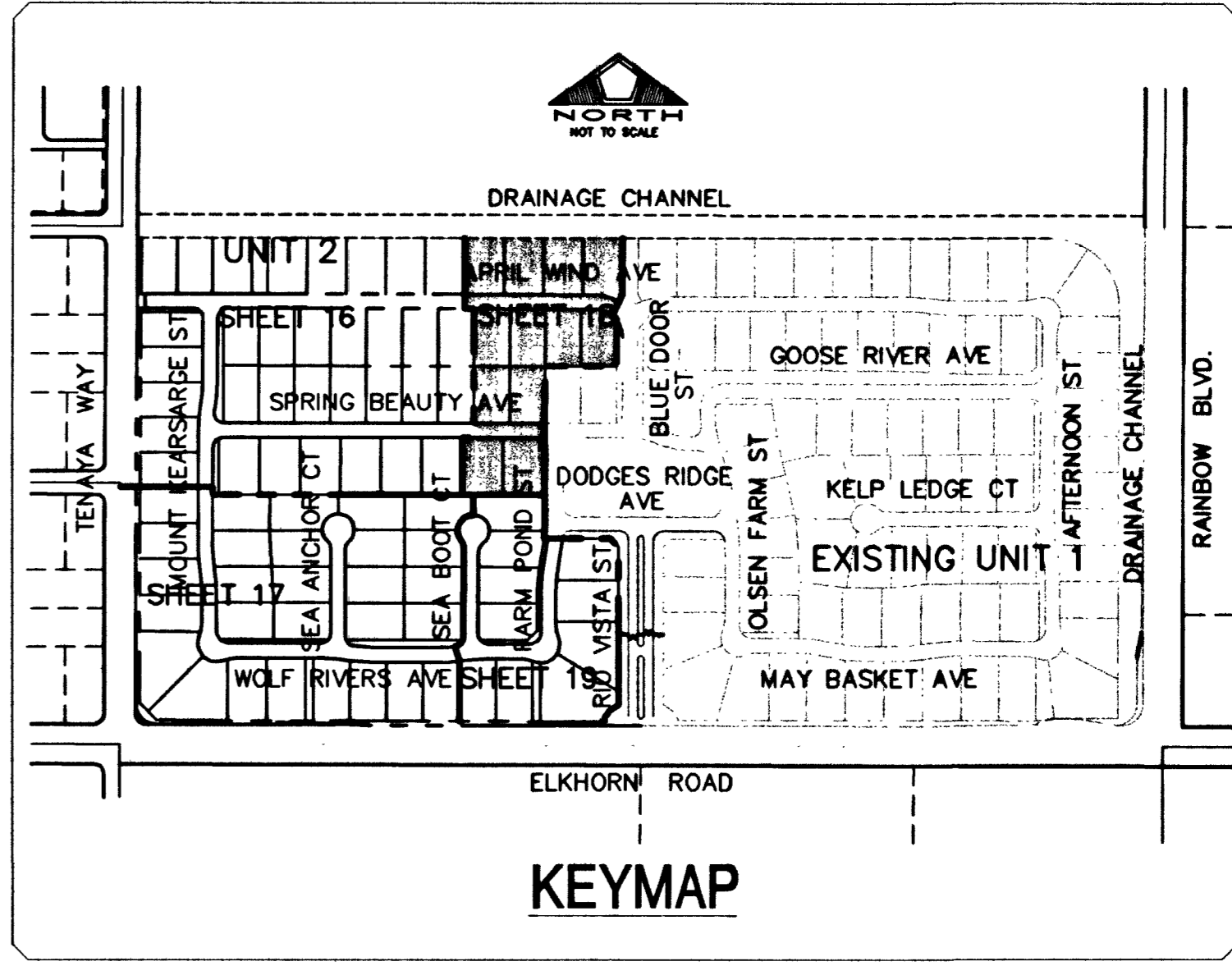
PROPOSED BELLA VISTA DEVELOPMENT BY OTHERS  
APN 125-15-701-001



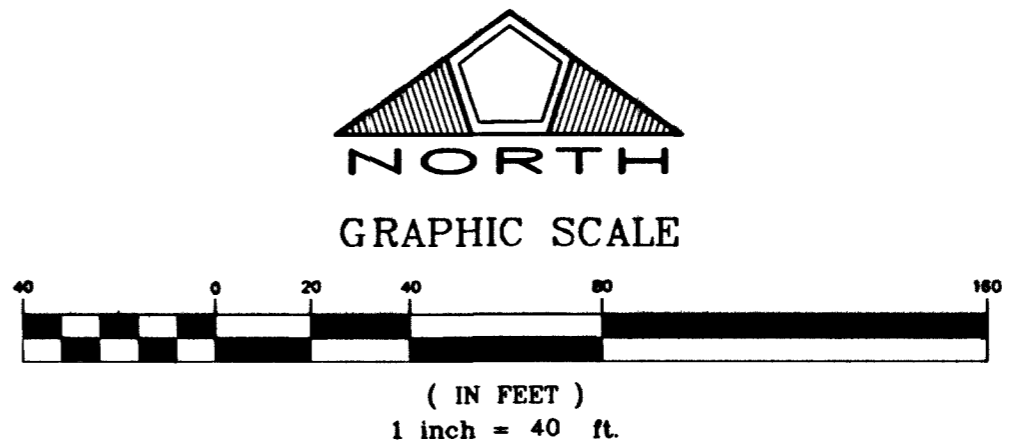
EXISTING UNIT 1

PER CLV DWG. 10/11/01-1657

\* INSTALL 4" AWWA C900 PVC SS LATERALS PER UDACS 2.19.03 B2



Call before you Dig  
1-800-227-2600  
Call before you Overhead  
1-702-593-6111



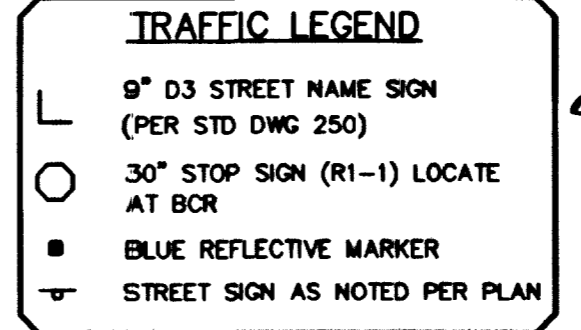
**PRIVATE STREET NOTE**  
NOTE: ALL PRIVATE STREETS ARE PUBLIC DRAINAGE EASEMENTS. CLV SEWER AND PUE EASEMENTS TO BE PRIVATELY MAINTAINED BY THE HOME OWNERS ASSOCIATION.

**MANHOLE SCHEDULE**  
SEE SHEET 19

**NOTE:**  
INSTALL PIPELINE MARKER BALLS IN TRENCH ABOVE EACH HORIZONTAL ELBOW FITTING, PER MANUFACTURER INSTRUCTIONS.

**BASIS OF BEARING**  
THE BASIS OF BEARING FOR THIS SURVEY IS THE WEST LINE OF THE SOUTHEAST QUARTER (SE 1/4) OF SECTION 15, TOWNSHIP 19 SOUTH, RANGE 60 EAST, M.D.M., CLARK COUNTY, NEVADA, AS SHOWN IN

**BENCHMARK**  
CITY OF LAS VEGAS BENCHMARK NO. 11580 1158B. RIVET AND PLATE IN TOP OF CURB, SOUTHEAST CORNER OF RAINBOW BLVD AND FLANAGAN DRIVE.  
ELEVATION = 724.3103 METERS (NAVD '88 PUBLISHED)  
ELEVATION = 2376.34 U.S. SURVEY FEET (NAVD '88 CALCULATED)  
PROJECT ELEVATION = 2376.52 U.S. SURVEY FEET



**APPROVALS**  
Richard Bell  
CITY FIRE MARSHAL  
6/10/03  
DATE  
Atty. Gen.  
LAS VEGAS VALLEY WATER DISTRICT  
7/13/03  
DATE

NO.	DESCRIPTION	DATE	APP'D

DATE: 6/9/2003  
S.D.Y.: D.L.  
DRAWN BY: R.P.S.  
DESIGNED BY: R.W.C.  
CHECKED BY: R.W.C.  
ADA CHECKED: R.W.C.  
JOB NO.: 8817028  
SCALE: 1"=40'

Stattec Consulting Inc.  
7051 West Charleston Blvd.  
Las Vegas, NV U.S.A.  
89117  
Tel: 702.258.0115  
Fax: 702.258.4956  
www.stattec.com

1633 VILLAGE CENTER CIRCLE, SUITE 250  
LAS VEGAS, NV 89134  
(702) 258-7900

PULTE HOMES  
WYETH RANCH UNIT 2  
UTILITY & TRAFFIC PLAN 3

**PROFESSIONAL ENGINEER**  
RICHARD W. BELL  
No. 5447  
CIVIL  
6-7-03

SHEET  
**18**  
OF 20  
1074699-2

W:\Active\88147028\Drawings\Unit 2 Plans\02-UTI.dwg Plotrow Mon, 09 Jun 2003 - 1:59pm

54901 55562