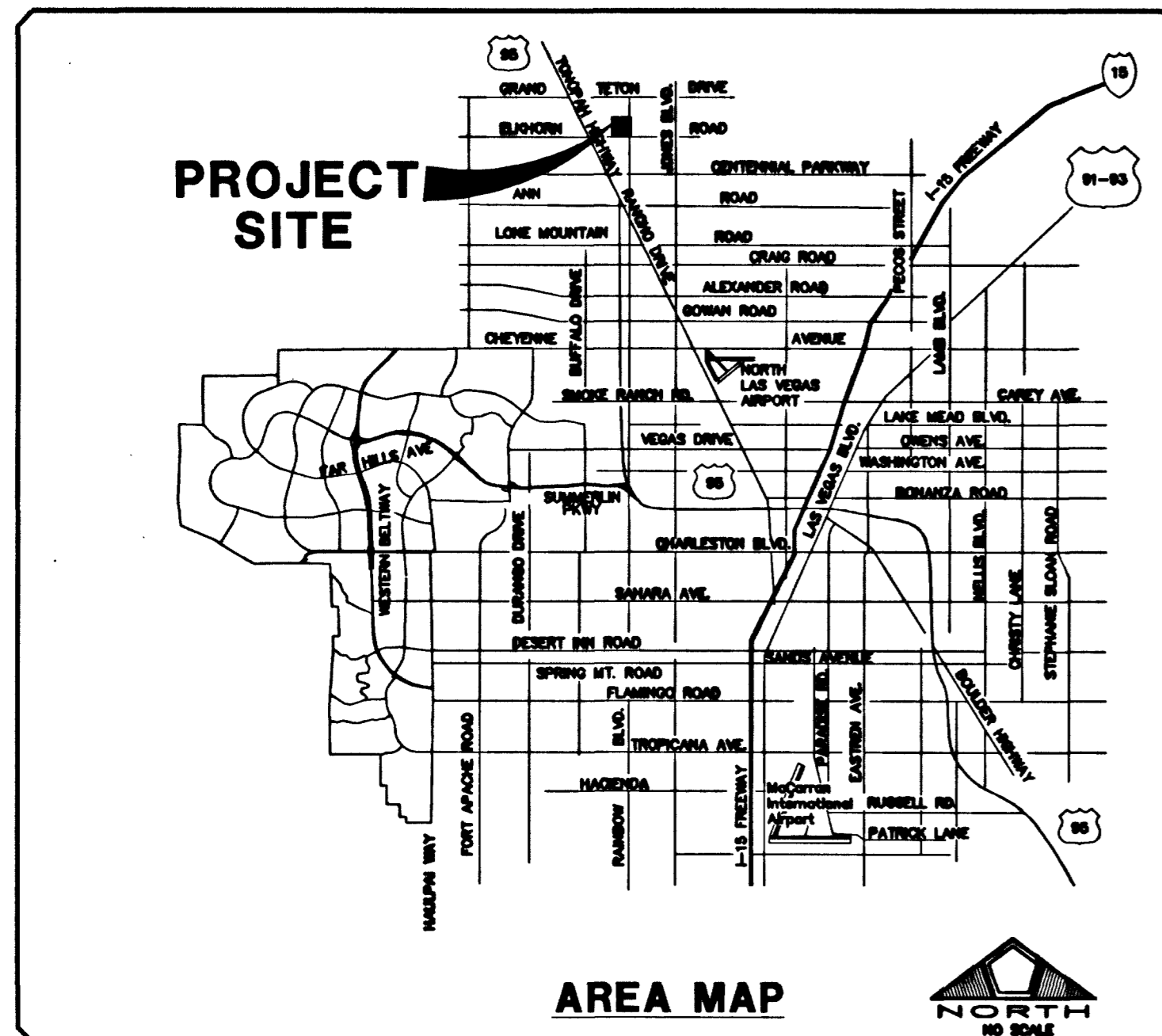


IMPROVEMENT PLANS

FOR

WYETH RANCH UNIT 2

APN # 125-15-801-002



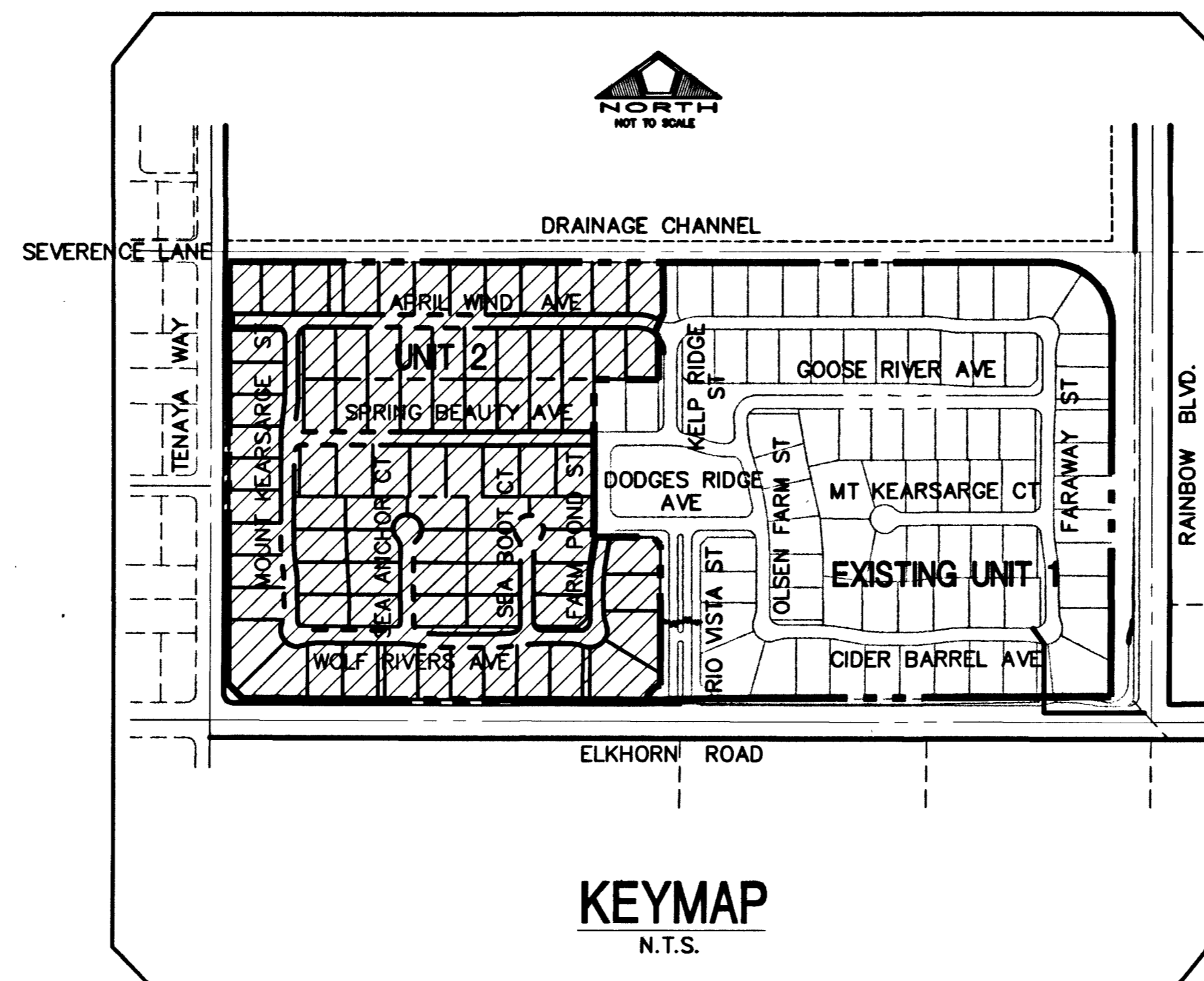
1635 VILLAGE CENTER CIRCLE, SUITE 250
LAS VEGAS, NEVADA 89134
(702) 256-7900



Stantec

Stantec Consulting Inc.
7151 West Charleston Blvd.
Las Vegas NV U.S.A.
89117
Tel. 702.258.0115
Fax. 702.258.4956
www.stantec.com

INDEX OF DRAWINGS	
1	COVER SHEET AND AREA MAP
2	GENERAL NOTES & ESTIMATE OF QUANTITIES
3	GRADING PLAN 1
4	GRADING PLAN 2
5	GRADING PLAN 3
6	GRADING PLAN 4
7	GRADING PLAN SECTIONS AND DETAILS 1
8	GRADING PLAN SECTIONS AND DETAILS 2
9	APRIL WIND AVENUE STA 1+00 TO STA 8+00 PLAN AND PROFILE
10	APRIL WIND AVENUE STA 8+00 TO STA 12+97.14 PLAN AND PROFILE
11	SPRING BEAUTY AVENUE PLAN AND PROFILE
12	WOLF RIVER AVENUE PLAN AND PROFILE
13	MOUNT KEARSARGE STREET PLAN AND PROFILE
14	SEA ANCHOR COURT & SEA BOOT COURT PLAN AND PROFILE
15	FARM POND STREET & COMMON LOT T PLAN AND PROFILE
16	UTILITY & TRAFFIC PLAN 1
17	UTILITY & TRAFFIC PLAN 2
18	UTILITY & TRAFFIC PLAN 3
19	UTILITY & TRAFFIC PLAN 4
20	SVZ DETAILS, TRAFFIC NOTES AND DETAILS



APPROVALS

Charles K. Kowalski, Jr. 7/2/03
 CHARLES K. KOWALSKI, JR.; PE #4784 DATE
 CITY ENGINEER

APPROVAL OF THESE PLANS IS LIMITED TO THOSE IMPROVEMENTS CONSTRUCTED IN THE DEDICATED RIGHTS-OF-WAY AND/OR DEDICATED EASEMENTS. THIS APPROVAL DOES NOT AUTHORIZE THE CONSTRUCTION OF ANY IMPROVEMENTS THAT DEVIATE FROM ADOPTED STANDARDS AND/OR SPECIFICATIONS, EXCEPT THOSE SPECIFICALLY LISTED UNDER DEVIATIONS FROM STANDARD. THE ENGINEER SHALL RESOLVE ANY DEVIATION OTHER THAN THOSE LISTED IN DEVIATIONS FROM STANDARDS IN FAVOR OF THE UNIFORM STANDARD DRAWINGS AND SPECIFICATIONS CLARK COUNTY AREA NEVADA.

Margo Wheeler 5/13/03
 MARGO WHEELER, CURRENT PLANNING MANAGER DATE
 THIS PLAN MEETS THE APPLICABLE STANDARDS OF THE PLANNING AND DEVELOPMENT DEPARTMENT.

John Marshall 5-9-03
 JOHN MARSHALL DATE
 CITY FIRE MARSHAL

Las Vegas Valley Water District 7/10/03
 LAS VEGAS VALLEY WATER DISTRICT (SHEETS 1, 9, 10, 13 & 16-20) DATE

Southwest Gas 5-1-03
 SOUTHWEST GAS DATE

Kathryn A. Creel 5-2-03
 KATHRYN A. CREEL DATE
 NEVADA POWER COMPANY

NEVADA POWER COMPANY ACKNOWLEDGES THAT WE HAVE RECEIVED YOUR PLANS AND WILL PROVIDE SERVICE TO ALL ELECTRICAL NEEDS ASSOCIATED WITH THIS PROJECT. NEVADA POWER COMPANY RESERVES THE RIGHT TO ADDRESS ANY EXISTING OR FUTURE CONFLICTS ONCE THE FINAL DESIGN IS COMPLETE. THE NEW SERVICE AND THE RESOLUTION OF ANY CONFLICTS WILL BE ACCOMPLISHED PURSUANT TO THE NEVADA PUBLIC UTILITY COMMISSION'S RULES AND REGULATIONS.

DATE: 4/30/2003	NO. DESCRIPTION	DATE	APPROVED
PH: S.L.Y.			
DRAWN BY: D.L.			
DESIGNED BY: R.P.S.			
CHECKED BY: R.W.C.			
ADA CHECKED:			
JOB NO.: 88147028			
SCALE: NONE			

Stantec Consulting Inc.
 7251 West Charleston Blvd.
 Las Vegas NV U.S.A.
 89117
 Tel. 702.258.0115
 Fax. 702.258.4956
 www.stantec.com

Stantec

Pulte Homes
 1635 VILLAGE CENTER CIRCLE, SUITE 250
 LAS VEGAS, NEVADA 89134
 (702) 256-7900

PULTE HOMES
 WYETH RANCH UNIT 2
 COVER SHEET

PROFESSIONAL ENGINEER - STATE OF NEVADA
 RICHARD W. CLARK
 PE #231-84
 CIVIL
 5447

SHEET
 1
 OF 20

1074699-2

X:\52881\active\88147028\Drawings\Unit 2_piers\02-CV.dwg stamp Wed, 30 Apr 2003 - 3:53pm
 54884 55556