

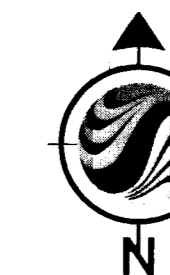
MONUMENT TIE MAP FOR WYETH RANCH - UNIT 2

A COMMON INTEREST COMMUNITY

A PORTION OF THE SOUTH HALF (S 1/2) OF THE SOUTHEAST QUARTER (SE 1/4) OF SECTION 15,
TOWNSHIP 19 SOUTH, RANGE 60 EAST, M.D.M., CITY OF LAS VEGAS, CLARK COUNTY, NEVADA

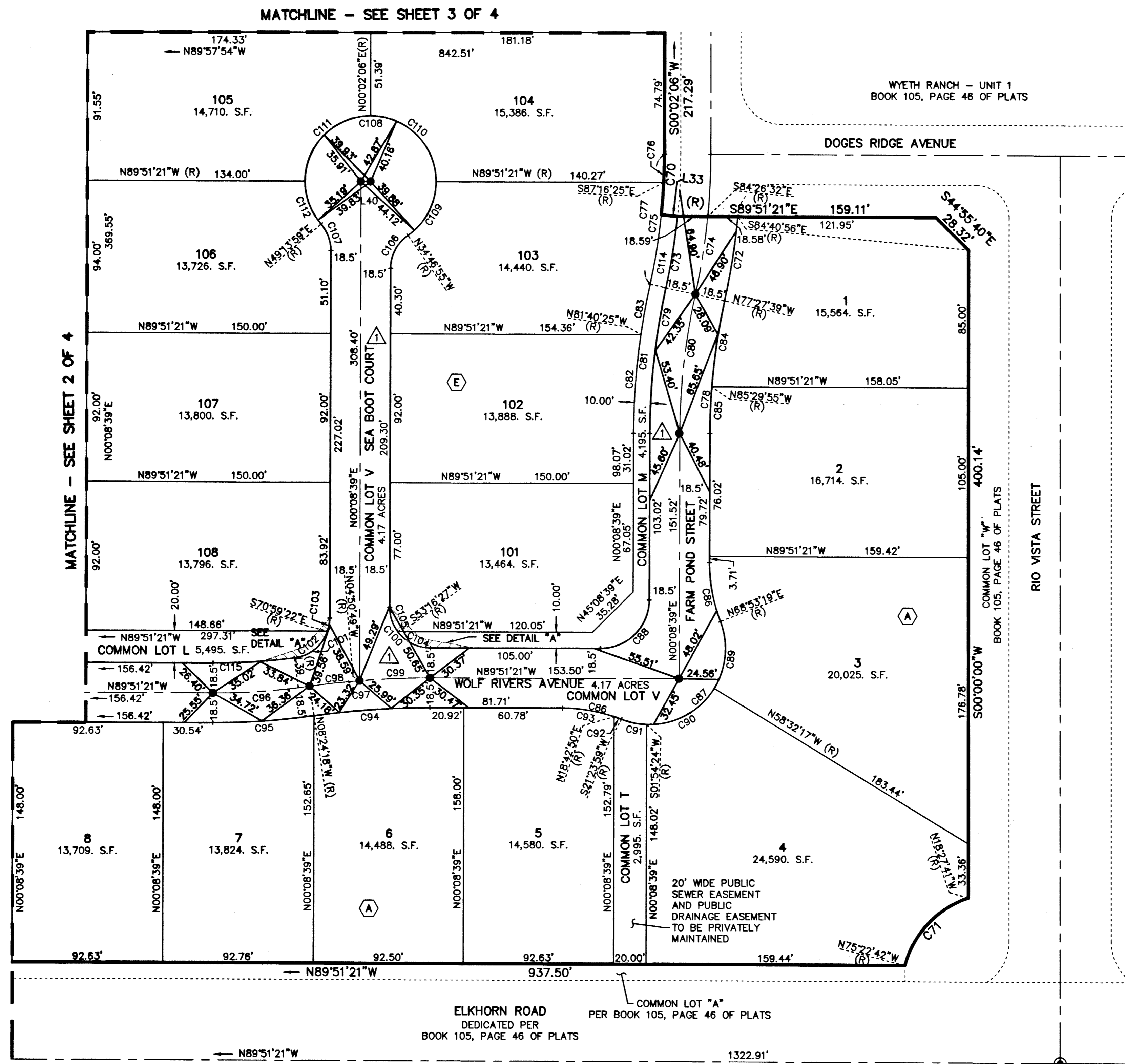
NOTES

- REAR PROPERTY CORNERS WILL BE SET WITH A REBAR AND ALUMINUM CAP STAMPED "PLS 14420" UNLESS A BLOCK WALL IS BUILT, THEN A NAIL AND BRASS TAG STAMPED "PLS 14420" WILL BE SET IN THE BLOCK WALL TO DENOTE THE SIDE PROPERTY LINE. FRONT PROPERTY CORNERS WILL BE WITNESSED BY A SAWCUT IN THE TOP OF CURB ON THE SIDE PROPERTY LINES, PROLONGATED.
- DIRECT VEHICULAR ACCESS TO TENAYA WAY AND ELKHORN ROAD THROUGH COMMON LOTS FROM ABUTTING RESIDENTIAL LOTS IS PROHIBITED.



LEGEND

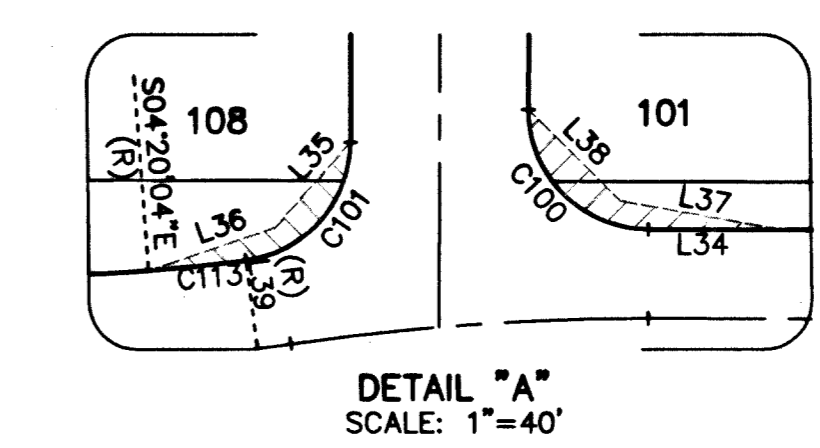
- SUBDIVISION BOUNDARY LINE
- SECTION LINE
- ALIQUOT PART LINE
- LOT LINE
- RIGHT-OF-WAY LINE/LIMITS OF PRIVATE STREET
- STREET CENTERLINE
- EASEMENT LINE
- MATCHLINE
- FOUND MONUMENTATION AS DESCRIBED
- BRASS CAP IN CONCRETE STAMPED "PLS 14420" TO BE SET PER BOOK 105, PAGE 46 OF PLATS
- SET 5/8-INCH REBAR AND 1-1/2-INCH ALUMINUM CAP, STAMPED "W, STOUT PLS 14420" WITH REFERENCE MONUMENTS IN TOP OF CURB
- LOT NUMBER
- TOTAL RESIDENTIAL LOTS IN SUBDIVISION = 83
- TOTAL COMMON LOTS IN SUBDIVISION = 11
- BLOCK NUMBER
- RADIAL BEARING
- SIGHT VISIBILITY RESTRICTION ZONE TO BE PRIVATELY MAINTAINED
- NO LANDSCAPING OR SIGHT RESTRICTION IMPROVEMENTS TALLER THAN 24 INCHES ALLOWED WITHIN THE AREAS SHADED
- PRIVATE STREET, P.U.E., CITY OF LAS VEGAS SEWER EASEMENT AND PUBLIC DRAINAGE EASEMENT TO BE PRIVATELY MAINTAINED



LINE	BEARING	DISTANCE
L33	S84°10'44"E	10.00'
L34	N89°51'21"W	28.00'
L35	N41°22'24"E	23.75'
L36	N71°10'34"E	27.86'
L37	N79°50'52"W	34.53'
L38	N44°51'21"W	26.87'
L39	N07°23'52"W	18.50'
L40	N89°51'21"W	6.00'

CURVE	DELTA	RADIUS	LENGTH	TANGENT
C70	5°47'10"	371.50'	37.52'	18.77'
C71	56°55'01"	60.00'	59.60'	32.52'
C72	7°13'18"	418.50'	52.75'	26.41'
C73	6°43'06"	381.50'	44.73'	22.39'
C74	6°58'54"	400.00'	48.74'	24.40'
C75	9°48'46"	371.50'	63.63'	31.89'
C76	2°41'29"	371.50'	17.45'	8.73'
C77	12°30'16"	371.50'	81.08'	40.70'
C78	12°23'42"	381.50'	82.53'	41.43'
C79	12°23'42"	418.50'	90.54'	45.45'
C80	12°23'42"	400.00'	86.53'	43.44'
C81	12°23'42"	428.50'	92.70'	46.53'
C82	8°10'56"	428.50'	61.19'	30.65'
C83	4°12'47"	428.50'	31.51'	15.76'
C84	8°02'16"	381.50'	53.52'	26.80'
C85	4°21'26"	381.50'	29.01'	14.51'
C86	21°15'20"	100.00'	37.10'	18.76'
C87	132°30'40"	47.00'	108.70'	106.84'
C88	90°00'00"	30.00'	47.12'	30.00'
C89	52°34'24"	47.00'	43.13'	23.22'
C90	60°26'41"	47.00'	49.58'	27.38'
C91	19°29'34"	47.00'	15.99'	8.07'
C92	2°41'09"	100.00'	4.69'	2.34'
C93	18°34'11"	100.00'	32.41'	16.35'
C94	8°32'57"	481.50'	71.84'	35.99'
C95	8°32'57"	418.50'	62.44'	31.28'
C96	8°32'57"	400.00'	59.68'	29.90'
C97	8°32'57"	500.00'	74.60'	37.37'
C98	3°33'29"	500.00'	31.05'	15.53'
C99	4°59'28"	500.00'	43.56'	21.79'
C100	90°00'00"	25.00'	39.27'	25.00'
C101	82°27'29"	25.00'	35.98'	21.91'
C102	6°33'31"	25.00'	27.75'	15.50'
C103	18°51'59"	25.00'	8.23'	4.15'
C104	53°07'48"	25.00'	23.18'	12.50'
C105	36°52'12"	25.00'	16.09'	8.33'
C106	55°04'26"	25.00'	24.03'	13.03'
C107	40°54'40"	25.00'	17.85'	9.33'
C108	27°59'07"	40.50'	195.08'	36.48'
C109	55°04'26"	40.50'	38.93'	21.12'
C110	90°06'33"	40.50'	63.69'	40.58'
C111	89°53'27"	40.50'	63.54'	40.42'
C112	40°54'40"	40.50'	28.92'	15.11'
C113	3°03'47"	381.50'	20.40'	10.20'
C114	6°43'06"	371.50'	43.56'	21.81'
C115	7°32'31"	381.50'	50.22'	25.14'

WYETH RANCH - UNIT 1
BOOK 105, PAGE 46 OF PLATS



DETAIL "A"
SCALE: 1"=40'

31 JANUARY 2006
189548
JOB# 88147028

FOUND RAILROAD SPIKE
PER FILE 115, PAGE 13 OF SURVEYS

058-4699-2
WLB
SHEET 4 OF 4