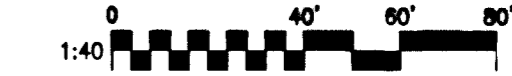
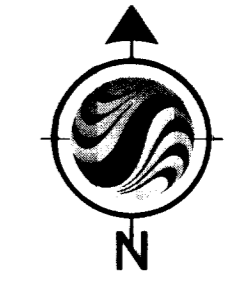


# MONUMENT TIE MAP FOR WYETH RANCH - UNIT 2 A COMMON INTEREST COMMUNITY

A PORTION OF THE SOUTH HALF (S 1/2) OF THE SOUTHEAST QUARTER (SE 1/4) OF SECTION 15,  
TOWNSHIP 19 SOUTH, RANGE 60 EAST, M.D.M., CITY OF LAS VEGAS, CLARK COUNTY, NEVADA

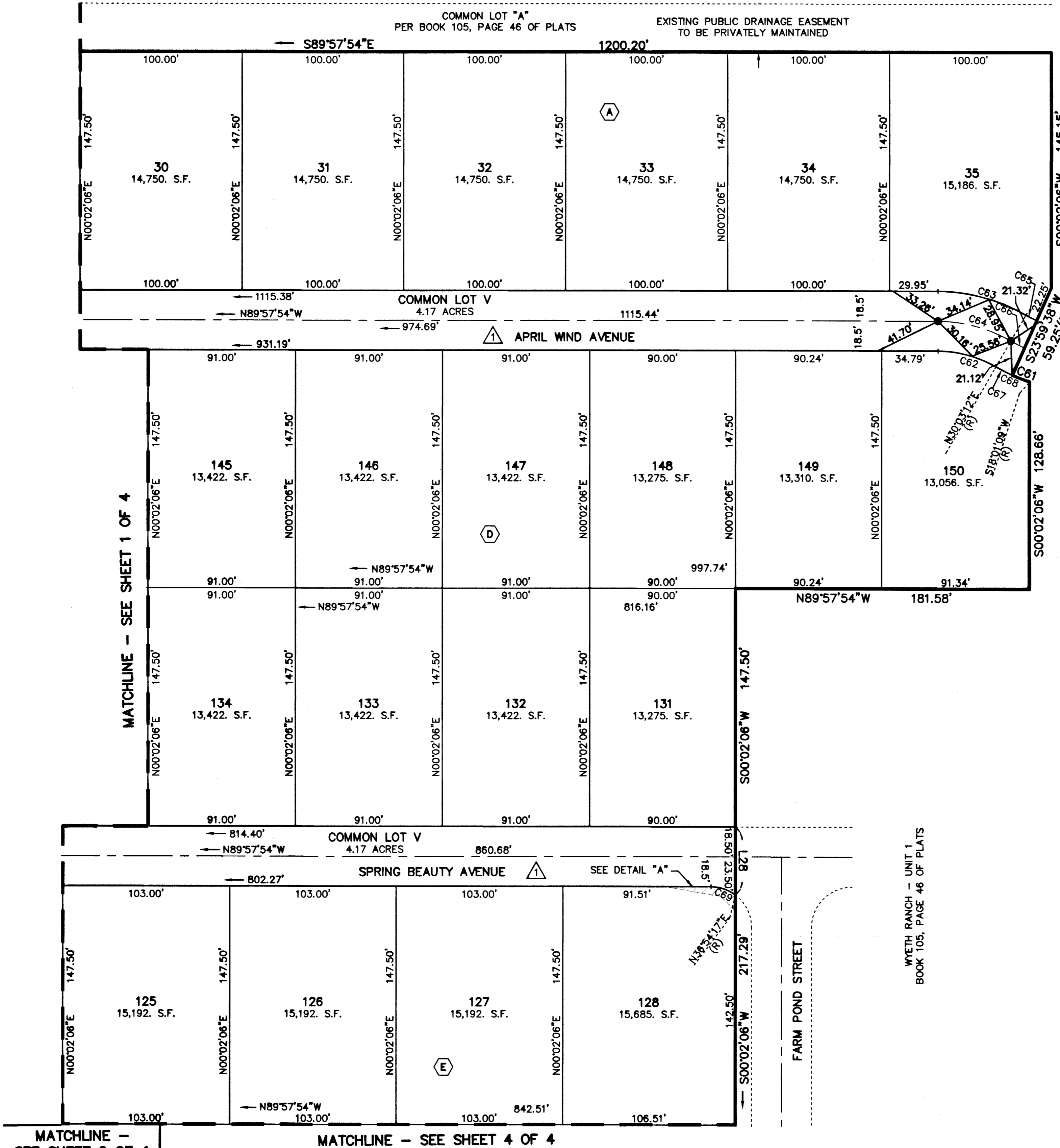
**NOTES**

- REAR PROPERTY CORNERS WILL BE SET WITH A REBAR AND ALUMINUM CAP STAMPED "PLS 14420" UNLESS A BLOCK WALL IS BUILT, THEN A NAIL AND BRASS TAG STAMPED "PLS 14420" WILL BE SET IN THE BLOCK WALL TO DENOTE THE SIDE PROPERTY LINE. FRONT PROPERTY CORNERS WILL BE WITNESSED BY A SAWCUT IN THE TOP OF CURB ON THE SIDE PROPERTY LINES, PROLONGATED.
- DIRECT VEHICULAR ACCESS TO TENAYA WAY AND ELKHORN ROAD THROUGH COMMON LOTS FROM ADJUTING RESIDENTIAL LOTS IS PROHIBITED.



**LEGEND**

- SUBDIVISION BOUNDARY LINE
- SECTION LINE
- ALIQUOT PART LINE
- LOT LINE
- RIGHT-OF-WAY LINE/LIMITS OF PRIVATE STREET
- STREET CENTERLINE
- EASEMENT LINE
- MATCHLINE
- FOUND MONUMENTATION AS DESCRIBED
- BRASS CAP IN CONCRETE STAMPED "PLS 14420" TO BE SET PER BOOK 105, PAGE 46 OF PLATS
- SET 5/8-INCH REBAR AND 1-1/2-INCH ALUMINUM CAP, STAMPED "W. STOUT PLS 14420" WITH REFERENCE MONUMENTS IN TOP OF CURB
- LOT NUMBER  
TOTAL RESIDENTIAL LOTS IN SUBDIVISION = 83  
TOTAL COMMON LOTS IN SUBDIVISION = 11
- BLOCK NUMBER
- RADIAL BEARING
- SIGHT VISIBILITY RESTRICTION ZONE TO BE PRIVATELY MAINTAINED. NO LANDSCAPING OR SIGHT RESTRICTION IMPROVEMENTS TALLER THAN 24 INCHES ALLOWED WITHIN THE AREAS SHADED
- PRIVATE STREET, P.U.E., CITY OF LAS VEGAS SEWER EASEMENT AND PUBLIC DRAINAGE EASEMENT TO BE PRIVATELY MAINTAINED

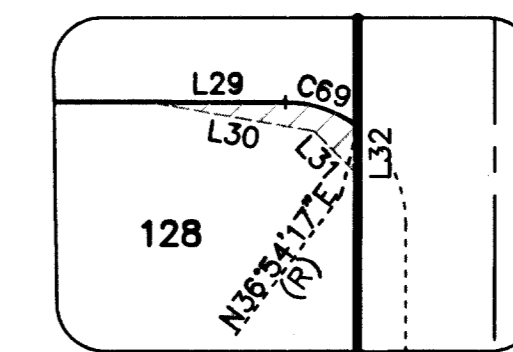


WYETH RANCH - UNIT 1  
BOOK 105, PAGE 46 OF PLATS

WYETH RANCH - UNIT 1  
BOOK 105, PAGE 46 OF PLATS

LINE	BEARING	DISTANCE
L28	S00°00'06"E	42.00'
L29	N89°57'54"W	28.00'
L30	N79°57'26"W	34.53'
L31	N44°57'54"W	12.73'
L32	N00°02'06"E	10.00'

CURVE	DELTA	RADIUS	LENGTH	TANGENT
C61	5°58'29"	108.50'	11.31'	5.66'
C62	30°01'06"	71.50'	37.46'	19.17'
C63	30°01'06"	108.50'	56.85'	29.09'
C64	30°01'06"	90.00'	47.15'	24.13'
C65	6°03'33"	71.50'	7.56'	3.78'
C66	6°03'33"	90.00'	9.52'	4.76'
C67	6°03'33"	108.50'	11.47'	5.74'
C68	12°02'03"	108.50'	22.79'	11.44'
C69	36°52'12"	25.00'	16.09'	8.33'



DETAIL "A"  
SCALE: 1"=40'

31 JANUARY 2006  
JOB# 88147028  
109547

058-4699-2  
SHEET 3 OF 4