

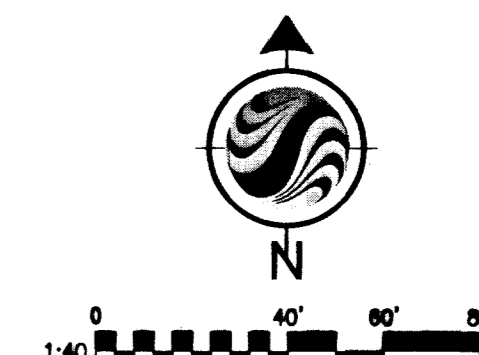
MONUMENT TIE MAP FOR WYETH RANCH - UNIT 2

A COMMON INTEREST COMMUNITY

A PORTION OF THE SOUTH HALF (S 1/2) OF THE SOUTHEAST QUARTER (SE 1/4) OF SECTION 15,
TOWNSHIP 19 SOUTH, RANGE 60 EAST, M.D.M., CITY OF LAS VEGAS, CLARK COUNTY, NEVADA

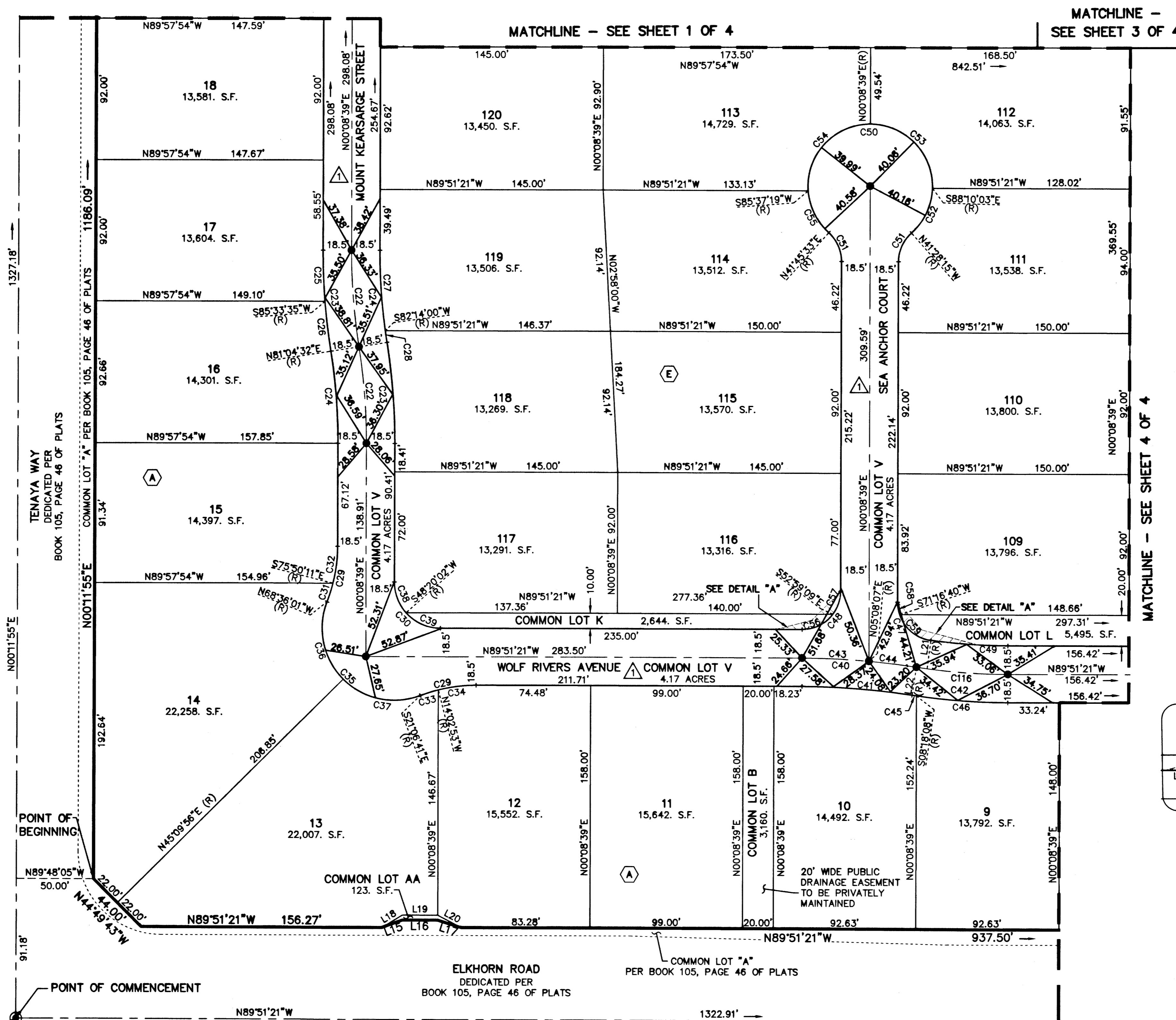
NOTES

- REAR PROPERTY CORNERS WILL BE SET WITH A REBAR AND ALUMINUM CAP STAMPED "PLS 14420" UNLESS A BLOCK WALL IS BUILT, THEN A NAIL AND BRASS TAG STAMPED "PLS 14420" WILL BE SET IN THE BLOCK WALL TO DENOTE THE SIDE PROPERTY LINE. FRONT PROPERTY CORNERS WILL BE WITNESSED BY A SAWCUT IN THE TOP OF CURB ON THE SIDE PROPERTY LINES, PROLONGATED.
- DIRECT VEHICULAR ACCESS TO TENAYA WAY AND ELKHORN ROAD THROUGH COMMON LOTS FROM ABUTTING RESIDENTIAL LOTS IS PROHIBITED.

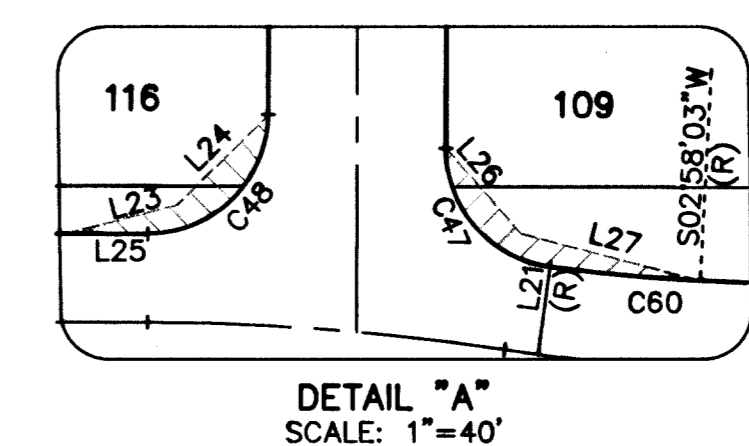


LEGEND

- SUBDIVISION BOUNDARY LINE
- SECTION LINE
- ALIQUOT PART LINE
- LOT LINE
- RIGHT-OF-WAY LINE/LIMITS OF PRIVATE STREET
- STREET CENTERLINE
- EASEMENT LINE
- MATCHLINE
- FOUND MONUMENTATION AS DESCRIBED
- BRASS CAP IN CONCRETE STAMPED "PLS 14420" TO BE SET PER BOOK 105, PAGE 46 OF PLATS
- SET 5/8-INCH REBAR AND 1-1/2-INCH ALUMINUM CAP, STAMPED "W. STOUT PLS 14420" WITH REFERENCE MONUMENTS IN TOP OF CURB
- LOT NUMBER
- TOTAL RESIDENTIAL LOTS IN SUBDIVISION = 83
- TOTAL COMMON LOTS IN SUBDIVISION = 11
- BLOCK NUMBER
- RADIAL BEARING
- SIGHT VISIBILITY RESTRICTION ZONE TO BE PRIVATELY MAINTAINED. NO LANDSCAPING OR SIGHT RESTRICTION IMPROVEMENTS TALLER THAN 24 INCHES ALLOWED WITHIN THE AREAS SHADED
- PRIVATE STREET, P.U.E., CITY OF LAS VEGAS SEWER EASEMENT AND PUBLIC DRAINAGE EASEMENT TO BE PRIVATELY MAINTAINED



LINE	BEARING	DISTANCE	CURVE	DELTA	RADIUS	LENGTH	TANGENT
L15	S69°51'24"W	14.42'	C22	9°04'07"	400.00'	63.31'	31.72'
L16	N89°51'21"W	23.00'	C23	9°04'07"	418.50'	66.24'	33.19'
L17	N72°12'58"W	16.50'	C24	9°04'07"	381.50'	60.38'	30.25'
L18	N58°31'02"E	15.78'	C25	4°35'04"	418.50'	33.49'	16.75'
L19	N89°51'21"W	23.09'	C26	4°29'03"	418.50'	32.75'	16.38'
L20	N62°05'53"W	17.77'	C27	7°54'39"	381.50'	52.67'	26.38'
L21	N07°41'10"E	18.50'	C28	1°09'28"	381.50'	7.71'	3.85'
L22	N08°41'36"E	18.50'	C29	2°11'52"	100.00'	37.10'	18.76'
L23	N75°31'24"E	23.77'	C30	90°00'00"	30.00'	47.12'	30.00'
L24	N45°08'39"E	26.87'	C31	7°14'10"	100.00'	12.63'	6.32'
L25	N89°51'21"W	17.00'	C32	14°01'10"	100.00'	24.47'	12.30'
L26	N41°05'06"W	23.75'	C33	7°03'48"	100.00'	12.33'	6.17'
L27	N75°12'51"W	38.60'	C34	14°11'32"	100.00'	24.77'	12.45'
			C35	132°30'40"	47.00'	108.70'	106.84'
			C36	66°14'03"	47.00'	54.33'	30.66'
			C37	66°16'37"	47.00'	54.37'	30.68'
			C38	41°48'37"	30.00'	21.89'	11.46'
			C39	48°11'23"	30.00'	25.23'	13.42'
			C40	8°32'57"	500.00'	74.60'	37.37'
			C41	8°32'57"	481.50'	71.84'	35.99'
			C42	8°32'57"	418.50'	62.44'	31.28'
			C43	4°59'28"	500.00'	43.56'	21.79'
			C44	3°33'29"	500.00'	31.05'	15.53'
			C45	0°23'28"	418.50'	2.86'	1.43'
			C46	8°09'29"	418.50'	59.59'	29.84'
			C47	82°27'29"	25.00'	35.98'	21.91'
			C48	90°00'00"	25.00'	39.27'	25.00'
			C49	7°32'31"	381.50'	50.22'	25.14'
			C50	276°46'12"	40.50'	195.64'	35.98'
			C51	48°23'06"	25.00'	21.11'	11.23'
			C52	46°41'48"	40.50'	33.01'	17.48'
			C53	91°41'18"	40.50'	64.81'	41.71'
			C54	94°31'20"	40.50'	66.81'	43.83'
			C55	43°51'46"	40.50'	31.00'	16.31'
			C56	53°07'48"	25.00'	23.18'	12.50'
			C57	36°52'12"	25.00'	16.09'	8.33'
			C58	18°51'59"	25.00'	8.23'	4.15'
			C59	63°35'31"	25.00'	27.75'	15.50'
			C60	4°43'07"	381.50'	31.42'	15.72'
			C116	8°32'57"	400.00'	59.68'	29.90'



31 JANUARY 2006
109546
JOB# 88147028

FOUND BRASS CAP IN WELL BOX STAMPED "PLS 8895" PER FILE 115, PAGE 13 OF SURVEYS