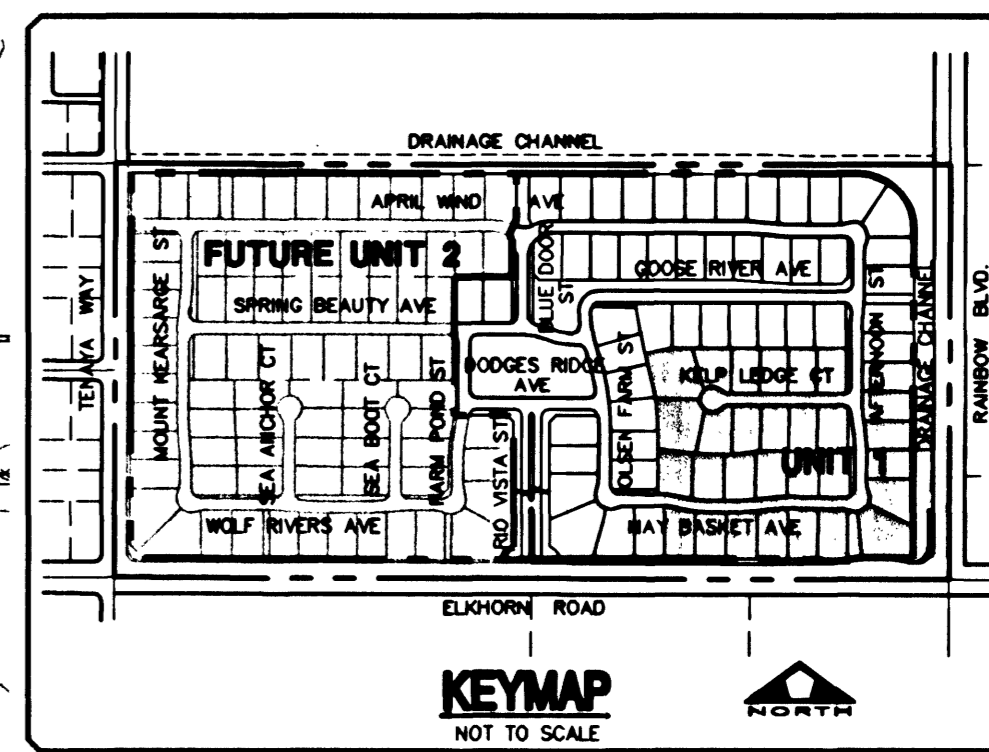
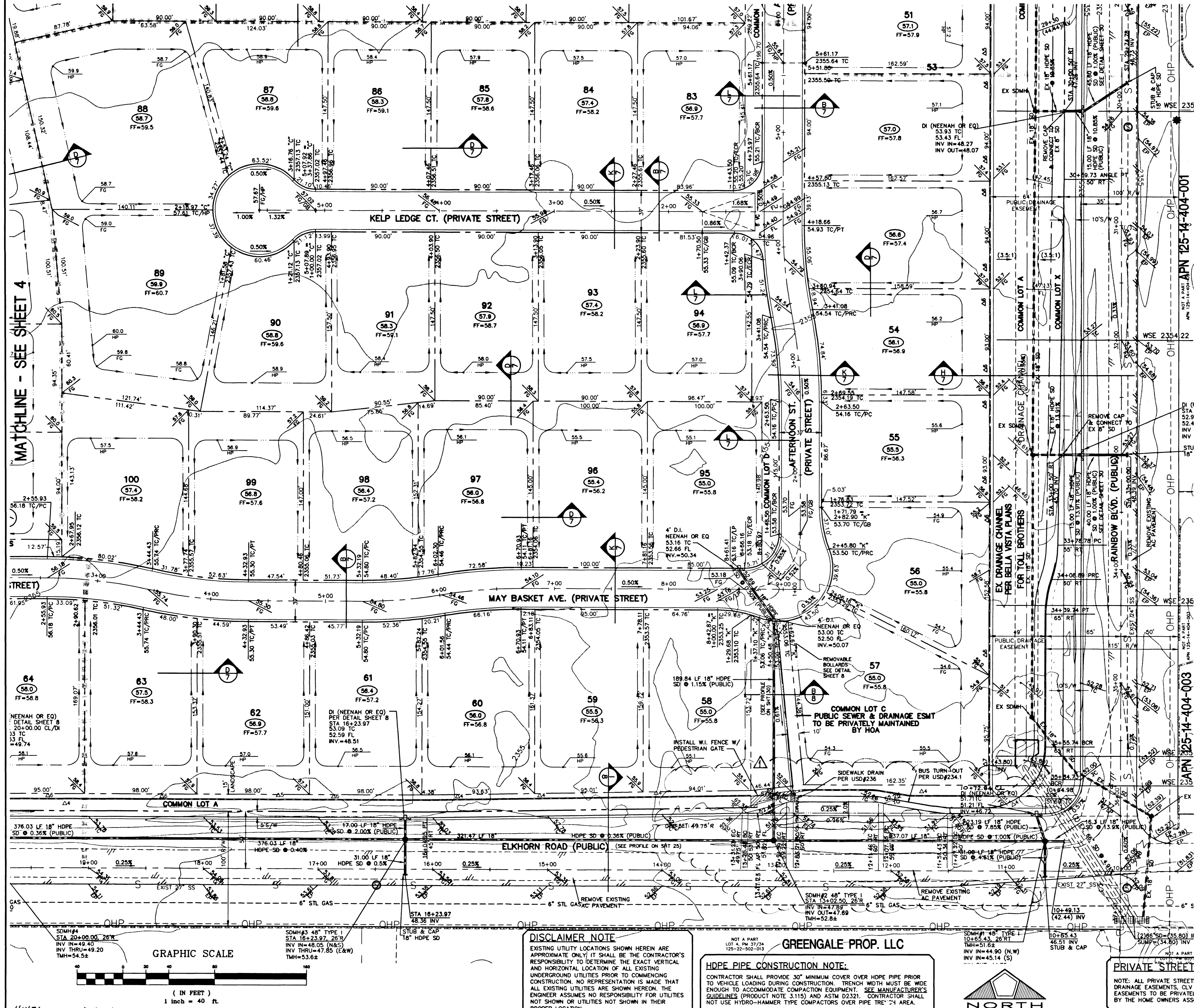


MATCHLINE - SEE SHEET 5

MATCHLINE - SEE SHEET 4



ENGINEER'S NOTES
1) CONTRACTOR IS RESPONSIBLE FOR DUST AND EROSION CONTROL DURING CONSTRUCTION.
2) SEE LANDSCAPE PLANS FOR LANDSCAPING AND ON-SITE IRRIGATION.
3) SEE DETAIL SHEET FOR ON-SITE PAVEMENT SECTIONS. CONTRACTOR TO VERIFY WITH SOILS REPORT.
4) ENGINEER TO BE NOTIFIED OF ANY DISCREPANCIES IMMEDIATELY.
5) THESE PLANS SHALL NOT, IN PART OR IN WHOLE, BE USED FOR CONSTRUCTION UNTIL APPROVED AND SIGNED BY THE GOVERNING AGENCIES.
6) CONTRACTOR TO MAINTAIN POSITIVE DRAINAGE AWAY FROM PROPOSED BUILDINGS.

BASIS OF BEARING
THE BASIS OF BEARING FOR THIS SURVEY IS THE WEST LINE OF THE SOUTHEAST QUARTER (SE 1/4) OF SECTION 15, TOWNSHIP 19 SOUTH, RANGE 80 EAST, N.D.M., CLARK COUNTY, NEVADA, AS SHOWN IN FILE 115, PAGE 13 OF OFFICIAL RECORDS, CLARK COUNTY, NEVADA. I.E. NORTH 001°15' EAST

BENCHMARK
CITY OF LAS VEGAS BENCHMARK NO. 11V90 115NS. RIVET AND PLATE IN TOP OF CURB, SOUTH SIDE OF RAINBOW BLVD. AND FLANAGAN DRIVE, 200' NORTH OF GRAND TETON DRIVE.
ELEVATION: = 724.3622 METERS (N.A.V.D. 88)
ELEVATION: = 2376.512 U.S. FEET (CALCULATED N.A.V.D. 88)

LEGEND table with symbols for property lines, street centerlines, block numbers, lot numbers, proposed finish floor, proposed pad elevation, existing elevation, proposed elevation, finish grade, top of curb, flow line, existing contour, proposed contour, pad high point, sight visibility zone, swale, grade break or transition, unit boundary, top of slope, front and side yard, existing improvements, courses of retaining wall, retaining wall, garden wall, wrought iron fence, 2:1 SCARP, and MATCHLINE.

RETAINING WALL CONVERSION TABLE with columns for NO. COURSES, HEIGHT, STD. RETAINER, RET. ADJACENT TO SW, and N/A.

ENGINEER'S CERTIFICATE
I CERTIFY THIS GRADING PLAN IS IN CONFORMANCE WITH THE APPROVED DRAINAGE STUDY FOR THIS PROJECT ON FILE AT THE CITY OF LAS VEGAS.
RICHARD P. SENECALE, P.E. NO. 11752 DATE 5-6-02

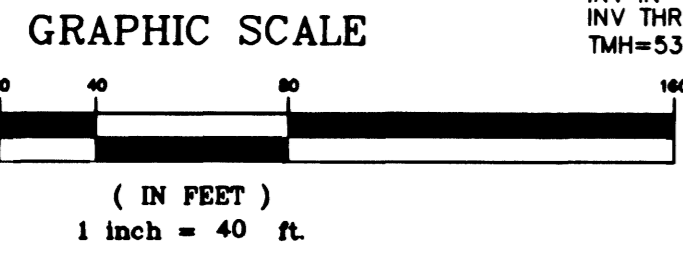
Call before you do Overhead
1-702-593-6111

Call before you Dig.
1-800-227-2600

DISCLAIMER NOTE
EXISTING UTILITY LOCATIONS SHOWN HEREIN ARE APPROXIMATE ONLY. IT SHALL BE THE CONTRACTOR'S RESPONSIBILITY TO DETERMINE THE EXACT VERTICAL AND HORIZONTAL LOCATION OF ALL EXISTING UNDERGROUND UTILITIES PRIOR TO COMMENCING CONSTRUCTION. NO REPRESENTATION IS MADE THAT ALL EXISTING UTILITIES ARE SHOWN HEREON. THE ENGINEER ASSUMES NO RESPONSIBILITY FOR UTILITIES NOT SHOWN OR UTILITIES NOT SHOWN IN THEIR PROPER LOCATION.

HDPE PIPE CONSTRUCTION NOTE
CONTRACTOR SHALL PROVIDE 30" MINIMUM COVER OVER HOPE PIPE PRIOR TO VEHICLE LOADING DURING CONSTRUCTION. TRENCH WIDTH MUST BE WIDE ENOUGH TO ACCOMMODATE COMPACTION EQUIPMENT. SEE MANUFACTURER'S GUIDELINES (PRODUCT NOTE 3.115) AND ASTM D2321. CONTRACTOR SHALL NOT USE HYDRO-HAMMER TYPE COMPACTORS OVER PIPE TRENCH AREA.

PRIVATE STREET NOTE
NOTE: ALL PRIVATE STREETS ARE PUBLIC DRAINAGE EASEMENTS. ALL SEWER AND PUE EASEMENTS TO BE PRIVATELY MAINTAINED BY THE HOME OWNERS ASSOCIATION.

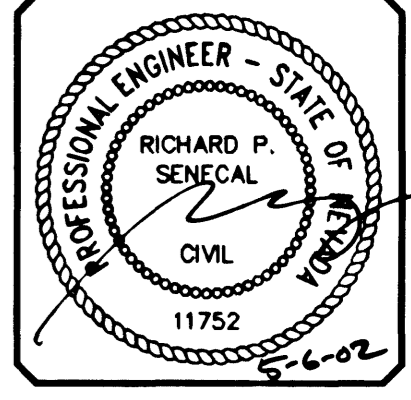


REVISIONS table with columns for NO., DESCRIPTION, and DATE.

PULTE HOMES
1635 VILLAGE CENTER DISCLE SUITE 250
LAS VEGAS, NEVADA 89134
(702) 256-7800
PENTACORE
CIVIL ENGINEERING AND SURVEYING PLANNING ARCHITECTURE AND INTERIOR DESIGN
6753 WEST CHARLESTON BOULEVARD
LAS VEGAS, NEVADA 89148 (702)258-0115

GRADING PLAN IV
WYETH RANCH
UNIT 1

DATE: 11/19/01
DRAWN BY: SLY
DESIGNED BY:
CHECKED BY:
ADA CHECKED:
JOB NO.: 01717.0230
SCALE: 1" = 40'



SHEET 6 OF 41
C.L.V. DWG.# 1071-4699

W:\Active\08147028\Drawings\unit_1\plans\01-gp1.dwg (rescaled) Mon, 05 May 2002 - 2:34pm

41476 42626