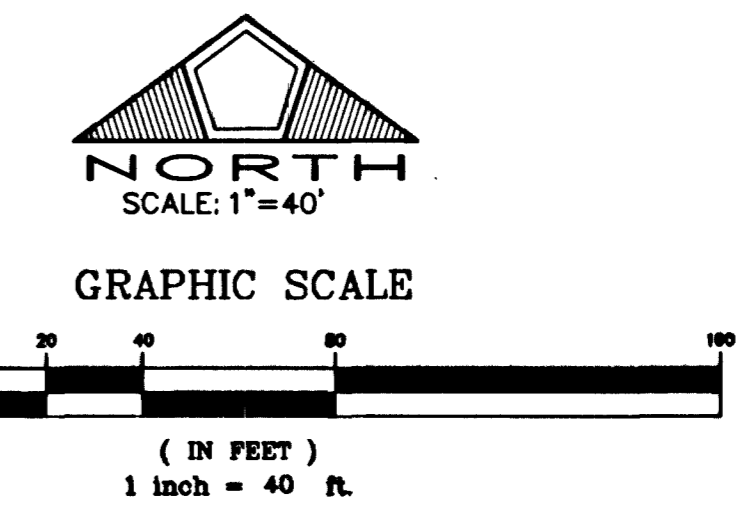
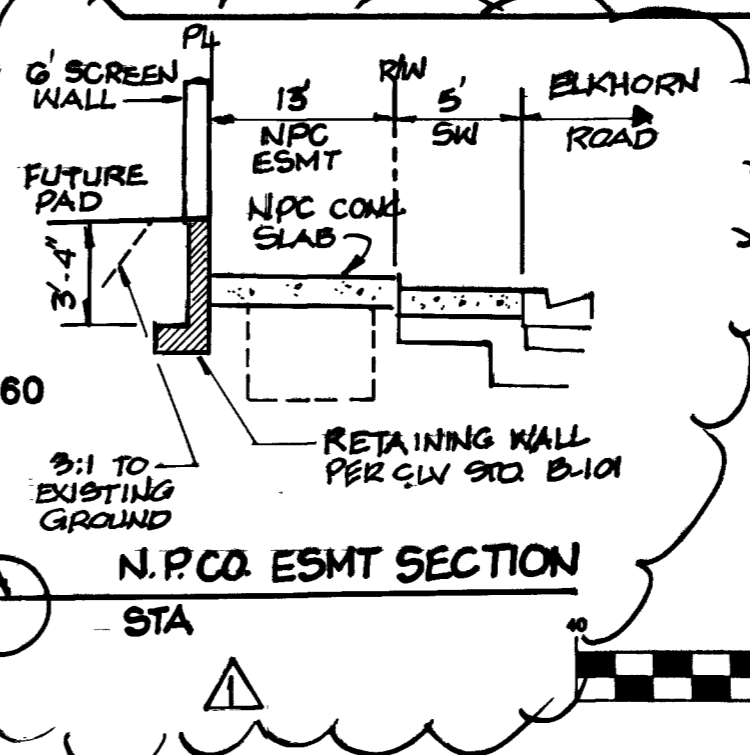
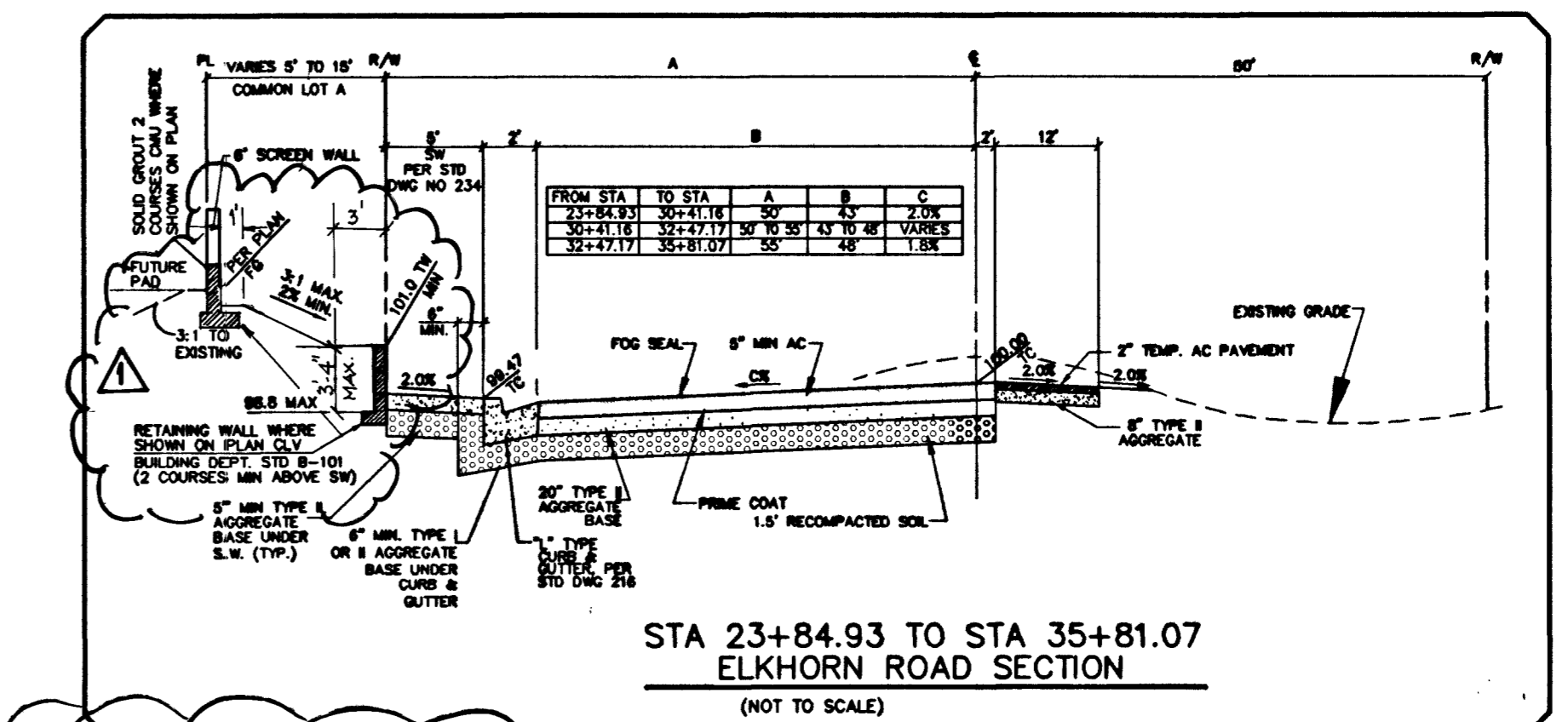
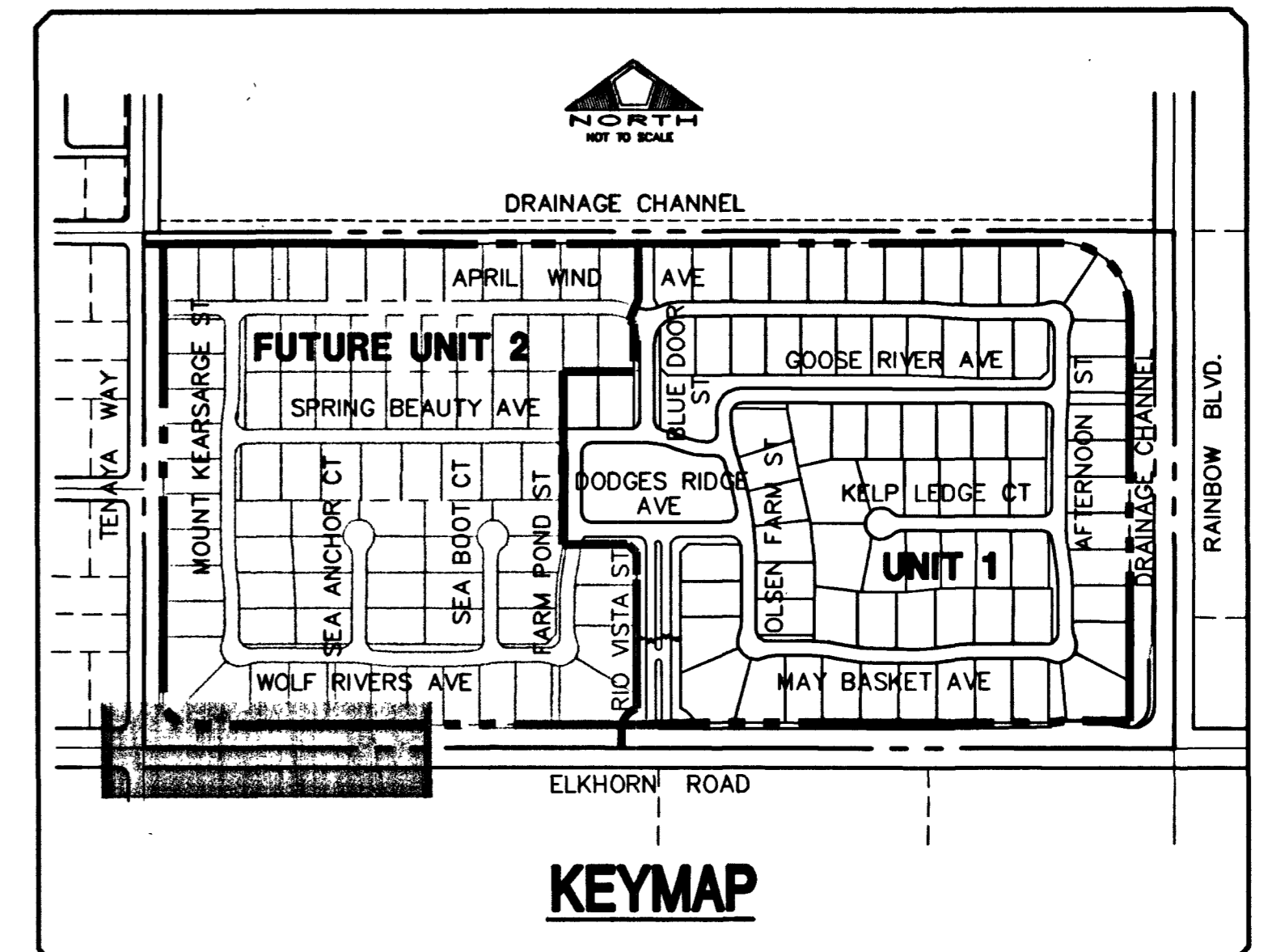
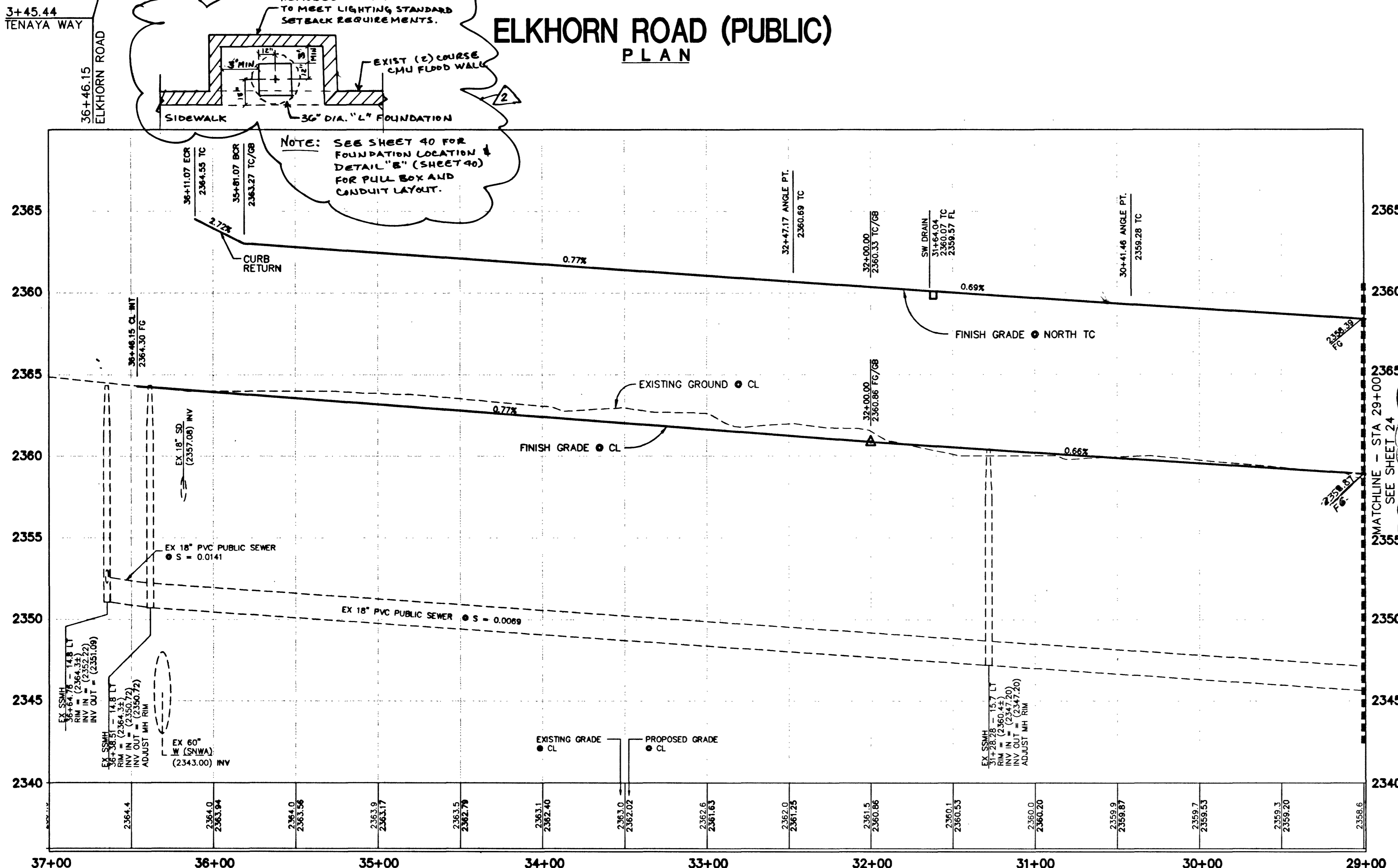
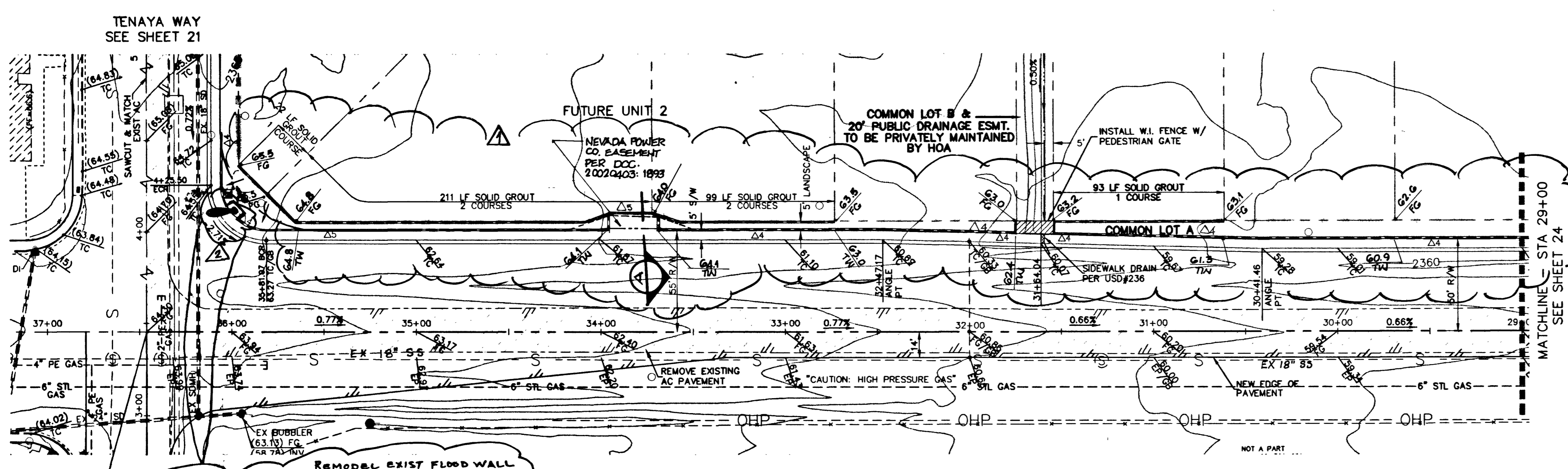


W:\active\86147026\Drawings\Unit 1\plans\01-pp015.dwg deberger Wed, 01 May 2002 - 4:24pm
 41493 44910 55852
 4/20/02, 4/20/02, 4/20/02



BENCHMARK
 CITY OF LAS VEGAS BENCHMARK NO. 11V90 115WS.
 RIVET AND PLATE IN TOP OF CURB, SOUTH SIDE OF
 RAINBOW BLVD. AND FLAMAGAN DRIVE, 200' NORTH
 OF GRAND TETON DRIVE.
 ELEVATION = 724.3622 METERS (N.A.V.D. 88)
 ELEVATION = 2376.512 U.S. FEET
 (CALCULATED N.A.V.D. 88)

BASIS OF BEARING
 THE BASIS OF BEARING FOR THIS SURVEY IS THE WEST LINE OF THE SOUTHEAST QUARTER
 (SE 1/4) OF SECTION 15, TOWNSHIP 19 SOUTH, RANGE 60 EAST, M.D.M., CLARK COUNTY,
 NEVADA, AS SHOWN IN FILE 115, PAGE 13 OF OFFICIAL RECORDS, CLARK COUNTY, NEVADA,
 I.E. NORTH 00°11'55" EAST

Call before you do Overhead
 1-702-593-6111

Call before you do Dig.
 1-800-227-2600

NO.	DESCRIPTION	DATE	APP'D
1	REVISION: REVISION 1		
2	REVISION: REVISION 2		
3	REVISION: REVISION 3		

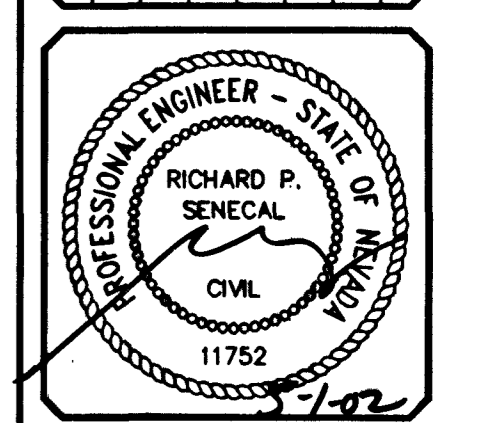
PULTE HOMES
 1635 VILLAGE CENTER CIRCLE, SUITE 250
 LAS VEGAS, NEVADA 89113
 (702) 256-7900

PENTACORE
 CIVIL ENGINEERING AND SURVEYING
 CONSULTING
 6783 WEST CHARLESTON BOULEVARD
 LAS VEGAS, NEVADA 89146 (702) 226-0115

**ELKHORN ROAD
 STA 29+00.00 TO STA 36+46.15
 PLAN AND PROFILE**

**WYETH RANCH
 UNIT 1**

DATE:	11/26/02
DRAWN BY:	
DESIGNED BY:	
CHECKED BY:	
ADA CHECKED:	
JOB NO.:	0147.0231
SCALE:	1"=40'



SHEET **23** OF 41