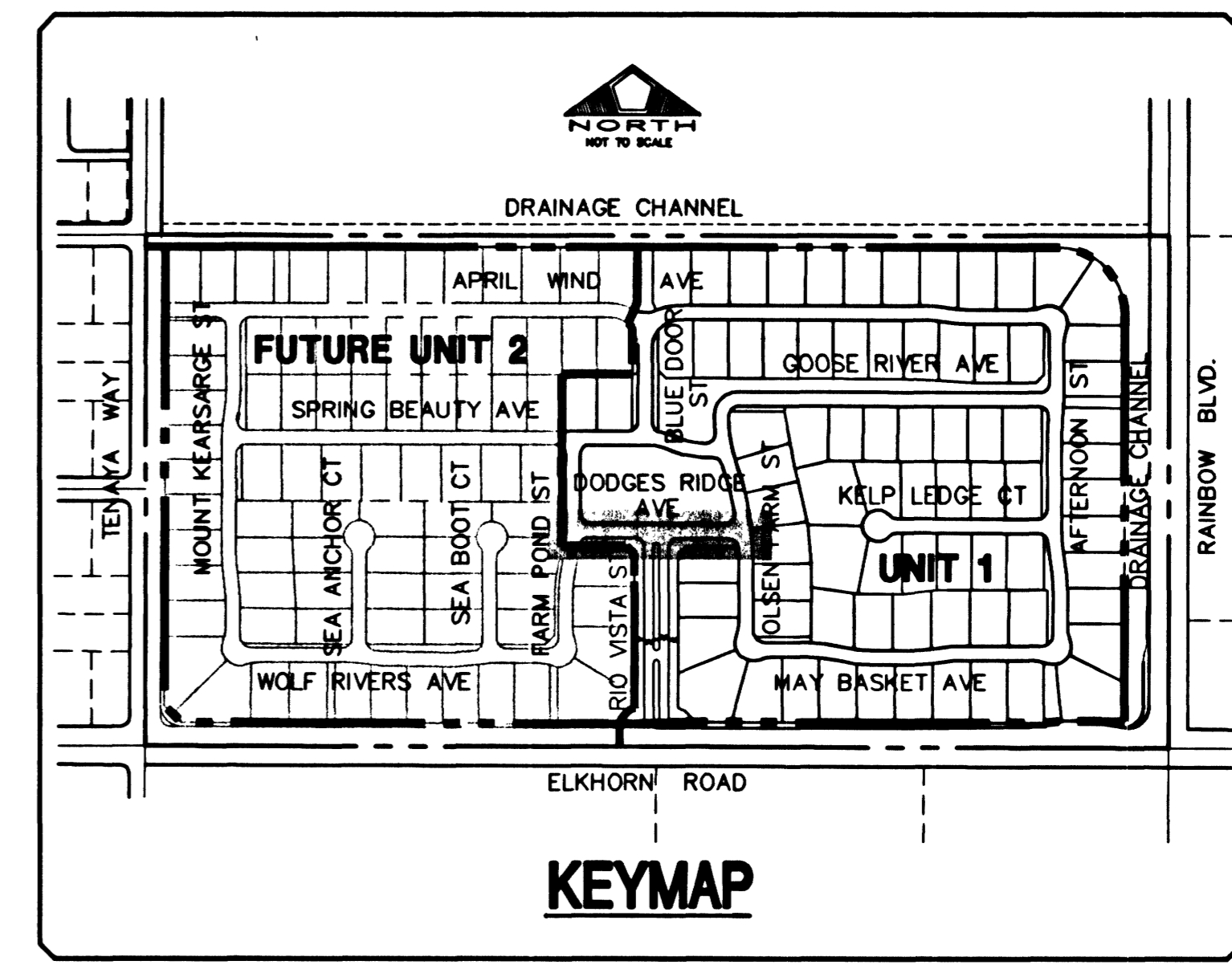
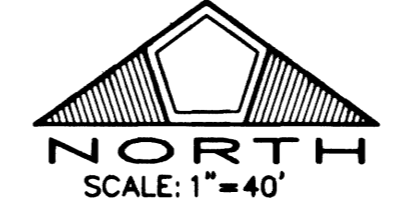
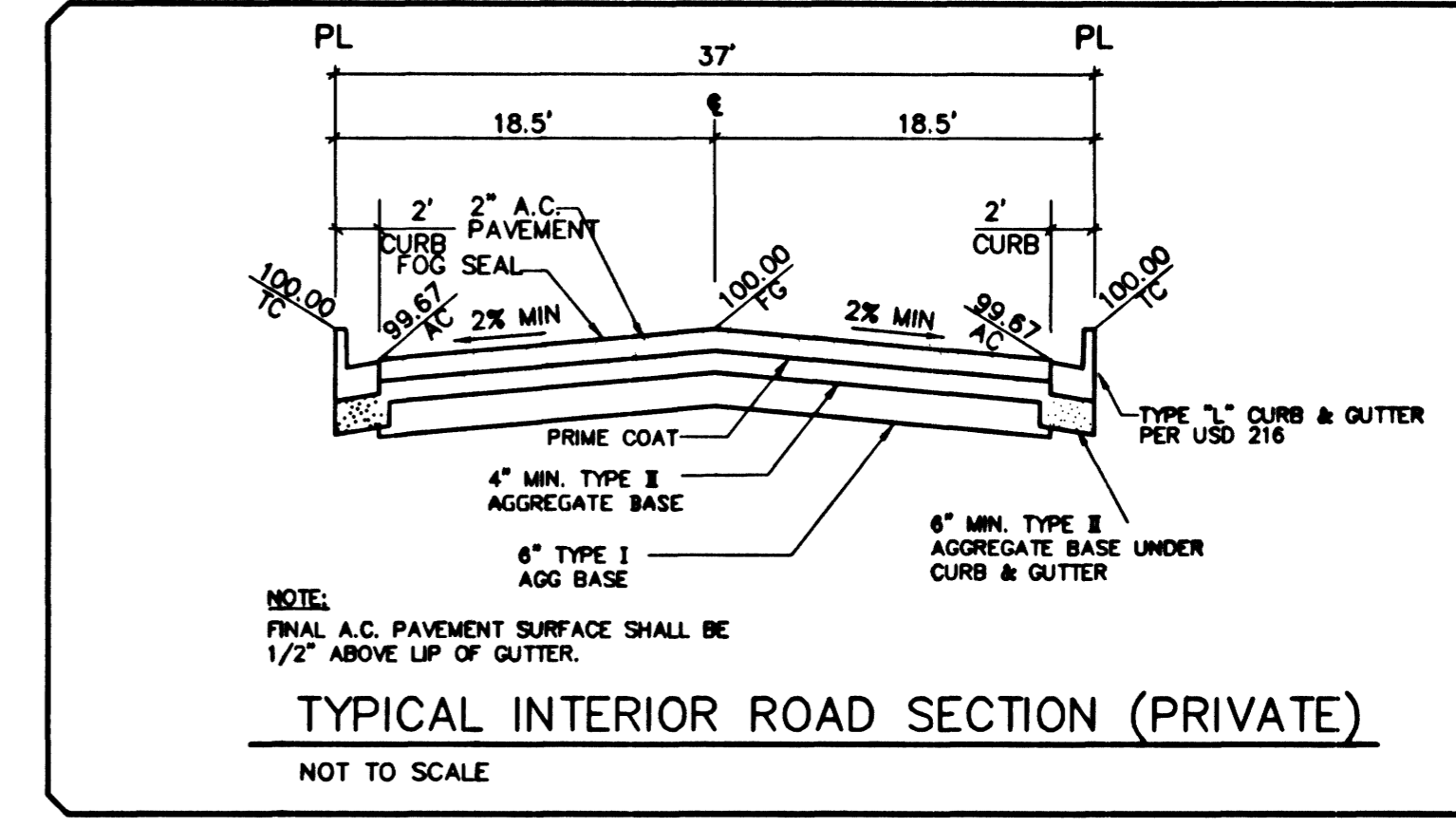


**DODGES RIDGE AVENUE (PRIVATE)  
PLAN**

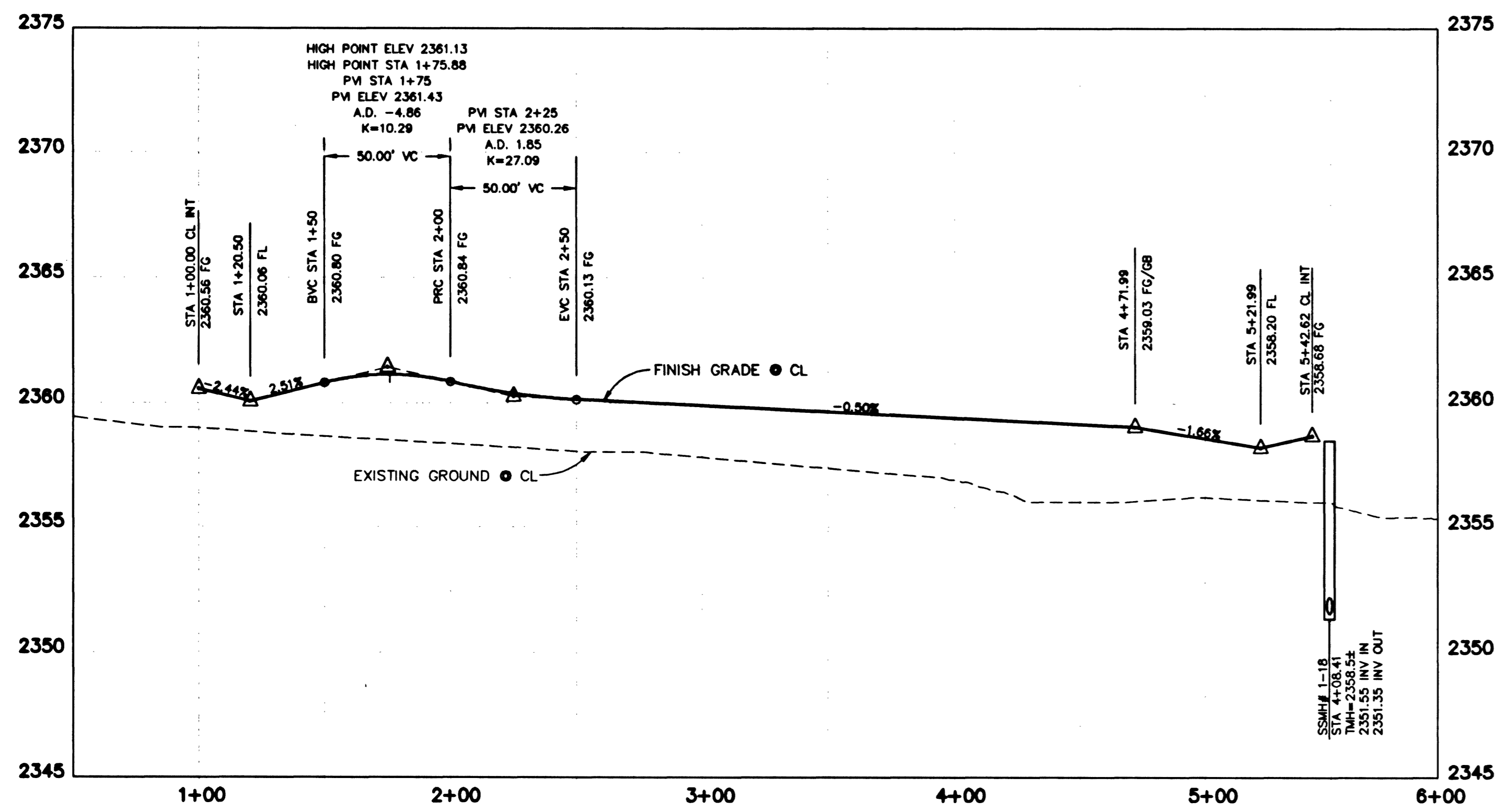
No.	Radius	Delta	Length	Tangent
C1	25.00'	89°53'27"	39.22'	24.95'
C2	20.00'	85°03'47"	29.69'	18.35'
C3	25.00'	99°56'44"	43.61'	29.77'
C4	25.00'	86°41'30"	37.83'	23.60'
C5				
C6	20.00'	89°51'21"	31.37'	19.95'



**KEYMAP**



**TYPICAL INTERIOR ROAD SECTION (PRIVATE)**



**DODGES RIDGE AVENUE (PRIVATE)  
PROFILE**

SCALE: HORIZ. 1" = 40'  
VERT. 1" = 4'

**BENCHMARK**  
CITY OF LAS VEGAS BENCHMARK NO. 11V90 11SWS.  
RIVET AND PLATE IN TOP OF CURB, SOUTH SIDE OF  
RAINBOW BLVD. AND FLANAGAN DRIVE, 200' NORTH  
OF GRAND TETON DRIVE.  
ELEVATION: = 724.3622 METERS (N.A.V.D. 88)  
ELEVATION: = 2376.512 U.S. FEET  
(CALCULATED N.A.V.D. 88)

**BASIS OF BEARING**  
THE BASIS OF BEARING FOR THIS SURVEY IS THE WEST LINE OF THE SOUTHEAST QUARTER  
(SE 1/4) OF SECTION 15, TOWNSHIP 19 SOUTH, RANGE 80 EAST, M.D.M., CLARK COUNTY,  
NEVADA, AS SHOWN IN FILE 115, PAGE 13 OF OFFICIAL RECORDS, CLARK COUNTY, NEVADA,  
I.E. NORTH 00°11'55" EAST

Avoid hitting overhead power lines. It's costly.  
**Call before you do Overhead**  
1-702-593-6111

Avoid cutting underground utility lines. It's costly.  
**Call before you Dig.**  
1-800-227-2800

NO.	DESCRIPTION	DATE	APP'D

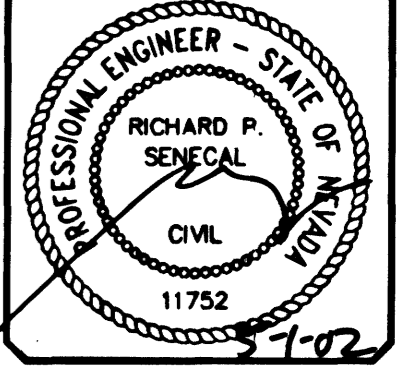
**PULTE HOMES**  
1635 VILLAGE CENTER CIRCLE, SUITE 250  
LAS VEGAS, NEVADA 89134  
(702) 256-7900

**PENTACORE**  
CIVIL ENGINEERING & PLANNING  
CONSTRUCTION MANAGEMENT & ADA CONSULTING  
6783 WEST CHARLESTON BOULEVARD  
LAS VEGAS, NEVADA 89146 (702) 256-0115

**DODGES RIDGE AVENUE  
PLAN AND PROFILE**

**WYETH RANCH  
UNIT 1**

DATE: 11/26/03  
DESIGNED BY:  
CHECKED BY:  
JOB NO.: 0147.0231  
SCALE: 1"=40'



SHEET  
**14**  
OF 41

C.L.V. DWG.#  
107Y-4699

Active: 08/14/2008 Drawings Unit 1 plans\01 - pp006.dwg dieberger West\_01 May 2002 - 4:06pm