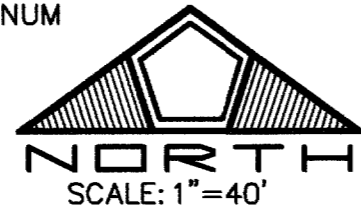


**LEGEND**

- ⊙ FOUND MONUMENTATION AS DESCRIBED
- △ SET BRASS CAP IN CONCRETE STAMPED "PLS 14420" UPON COMPLETION OF CONSTRUCTION
- SET 5/8-INCH REBAR AND 1-1/2-INCH ALUMINUM CAP, STAMPED "W. STOUT PLS 14420" WITH REFERENCE MONUMENTS IN TOP OF CURB
- CENTERLINE POINT OF INTERSECTION
- SUBDIVISION BOUNDARY LINE
- SECTION LINE
- ALIQUOT PART LINE
- RIGHT-OF-WAY LINE
- STREET CENTERLINE
- LOT LINE
- ASSESSOR'S PARCEL LINE
- EASEMENT LINE
- 1 LOT NUMBER
- RESIDENTIAL LOTS IN SUBDIVISION = 78
- NON-RESIDENTIAL LOTS IN SUBDIVISION = 2
- COMMON LOTS IN SUBDIVISION = 13
- S.F. SQUARE FEET
- L1 LINE NUMBER
- ① CURVE NUMBER
- (R) RADIAL BEARING
- P.U.E. PUBLIC UTILITY EASEMENT
- ▨ SIGHT VISIBILITY RESTRICTION ZONE TO BE PRIVATELY MAINTAINED
- NO LANDSCAPING OR SIGHT RESTRICTION IMPROVEMENTS TALLER THAN 24 INCHES ALLOWED WITHIN THE AREAS HATCHED
- Ⓐ BLOCK NUMBER
- △ PRIVATE STREET, P.U.E., CITY OF LAS VEGAS SEWER EASEMENT AND PUBLIC DRAINAGE EASEMENT TO BE PRIVATELY MAINTAINED



# MONUMENT TIE MAP

## WYETH RANCH - UNIT 1

A COMMON INTEREST COMMUNITY

A PORTION OF THE SOUTH HALF (S 1/2) OF THE SOUTHEAST QUARTER (SE 1/4) OF SECTION 15, TOWNSHIP 19 SOUTH, RANGE 60 EAST, M.D.M., CITY OF LAS VEGAS, CLARK COUNTY, NEVADA

APN 125-15-701-001  
NOT A PART

**NOTES**

1. REAR PROPERTY CORNERS WILL BE SET WITH A REBAR AND ALUMINUM CAP STAMPED "PLS 14420" UNLESS A BLOCK WALL IS BUILT, THEN A NAIL AND BRASS TAG STAMPED "PLS 14420" WILL BE SET IN THE BLOCK WALL TO DENOTE THE SIDE PROPERTY LINE. FRONT PROPERTY CORNERS WILL BE WITNESSES BY A SAWCUT IN THE TOP OF CURB ON THE SIDE PROPERTY LINES, PROLONGATED.

CURVE	DELTA	RADIUS	LENGTH	TANGENT
1	05°58'29"	108.50'	11.31'	5.86'
2	50°37'28"	71.50'	63.17'	33.82'
3	26°39'55"	108.50'	50.50'	25.71'
4	26°39'55"	90.00'	41.89'	21.33'
5	50°37'28"	90.00'	79.52'	42.57'
6	02°26'40"	71.50'	3.05'	1.53'
7	23°57'33"	90.00'	37.63'	19.10'
8	48°10'48"	71.50'	60.12'	31.97'
9	48°29'57"	40.50'	34.28'	18.24'
10	27°44'52"	40.50'	195.64'	35.98'
13	90°00'00"	25.00'	39.27'	25.00'
14	23°34'41"	25.00'	10.29'	5.22'
15	66°25'19"	25.00'	28.98'	16.37'
16	79°42'33"	25.00'	34.78'	20.87'
17	23°29'34"	181.50'	74.42'	37.74'
18	13°12'07"	218.50'	50.35'	25.29'
19	23°29'34"	200.00'	82.01'	41.59'
20	27°01'11"	218.50'	103.04'	52.50'
21	27°16'32"	181.50'	70.56'	35.73'
22	35°54'14"	200.00'	125.33'	64.80'
23	97°27'43"	25.00'	42.53'	28.49'
24	53°07'48"	25.00'	23.18'	12.50'
25	89°53'27"	25.00'	39.22'	24.95'
26	75°53'44"	25.00'	33.12'	19.50'
27	01°05'51"	421.00'	8.06'	4.03'
28	08°53'54"	781.50'	121.37'	60.81'
29	09°56'44"	25.00'	43.61'	29.77'
30	06°24'07"	421.00'	47.04'	23.54'
31	90°46'00"	30.00'	47.53'	30.40'
32	89°57'29"	62.00'	97.34'	61.95'
33	89°57'29"	43.50'	68.30'	43.47'
34	18°53'09"	402.50'	132.67'	66.94'
35	12°34'06"	402.50'	88.29'	44.32'
36	06°19'03"	402.50'	44.38'	22.21'
37	18°04'37"	384.00'	121.15'	61.08'
38	16°52'21"	384.00'	113.06'	56.94'
39	01°12'26"	384.00'	8.09'	4.05'
40	30°46'00"	30.00'	16.11'	8.25'
41	60°00'00"	30.00'	31.42'	17.32'
43	05°47'09"	818.50'	82.65'	41.36'
44	06°27'17"	818.50'	92.21'	46.15'
45	18°50'38"	818.50'	269.19'	135.82'
46	18°50'38"	800.00'	263.11'	132.75'
47	12°35'21"	800.00'	175.78'	88.24'
49	01°46'04"	781.50'	24.11'	12.06'
50	08°48'36"	218.50'	33.60'	16.83'
51	03°38'56"	421.00'	26.81'	13.41'
52	01°01'44"	781.50'	14.03'	7.02'
53	26°39'55"	71.50'	33.28'	16.94'
54	09°13'52"	108.50'	17.48'	8.76'
55	72°33'57"	20.00'	25.33'	14.68'
56	08°40'52"	108.50'	16.44'	8.24'
57	00°33'00"	108.50'	1.04'	0.52'
58	06°31'30"	108.50'	12.36'	6.18'

LINE	BEARING	DISTANCE	LINE	BEARING	DISTANCE
L1	S23°59'38"W	59.25'	L20	N39°49'11"W	22.85'
L3	N00°00'06"W	42.00'	L21	N67°52'17"W	41.39'
L4	N24°11'09"W	22.75'	L22	S00°02'06"W	10.00'
L5	N26°37'50"W	18.50'	L23	N42°31'16"E	29.64'
L6	N44°53'00"W	28.24'	L24	N05°48'44"E	32.75'
L7	N73°79'06"E	4.04'	L25	N28°17'53"W	30.33'
L8	N00°11'55"E	15.00'	L26	N59°32'39"W	21.10'
L9	N03°29'32"W	18.50'			
L10	N01°15'07"E	18.50'			
L11	N00°02'06"E	17.05'			
L12	N44°54'38"W	26.83'			
L13	N14°33'00"W	23.83'			
L14	N40°10'38"E	30.43'			
L15	N01°09'52"E	29.70'			
L16	N45°02'06"E	26.87'			
L17	N78°24'50"E	23.77'			
L18	N89°57'54"W	17.00'			
L19	N44°57'54"W	14.14'			

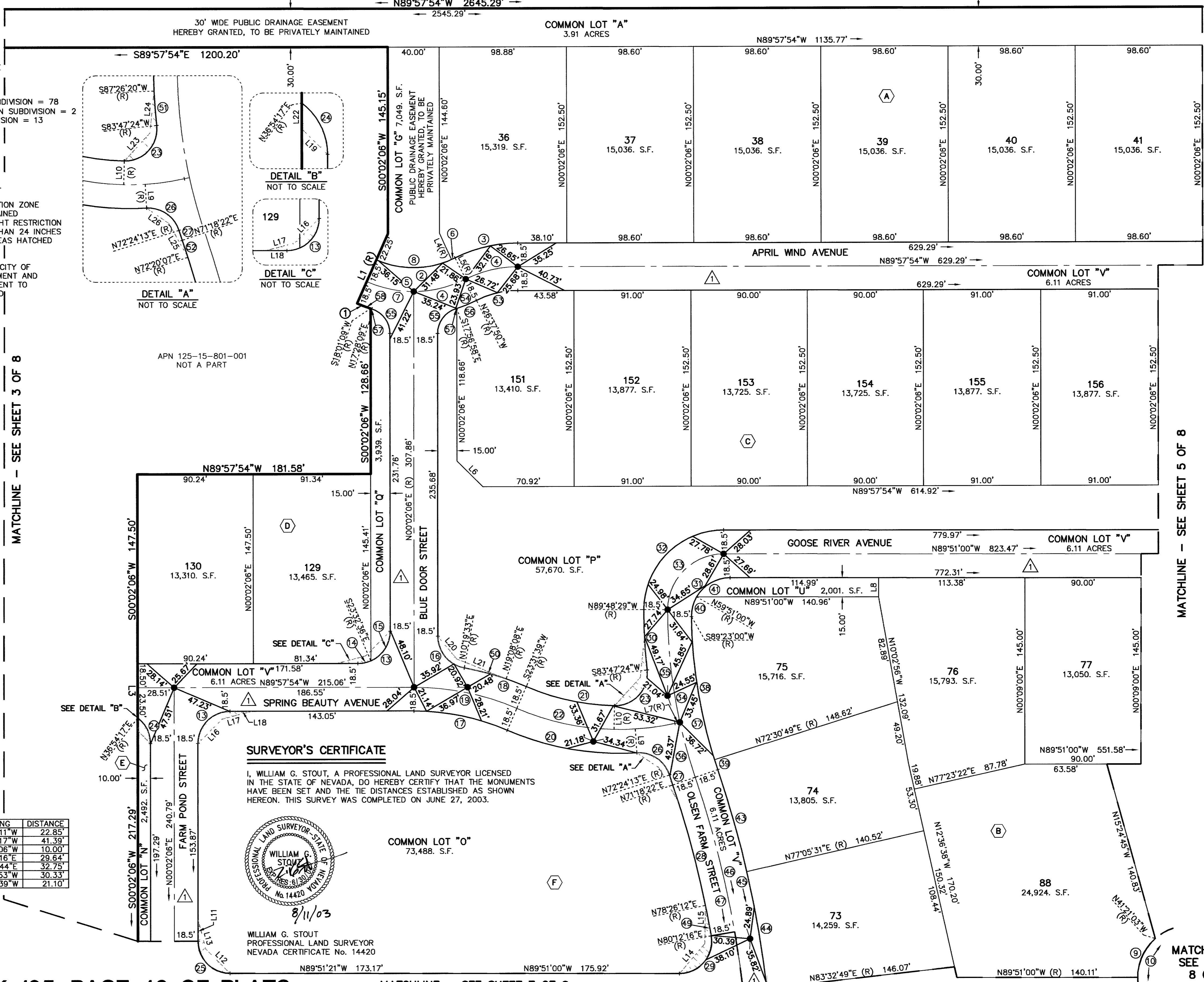
MATCHLINE - SEE SHEET 3 OF 8

MATCHLINE - SEE SHEET 5 OF 8

**BOOK 105, PAGE 46 OF PLATS**

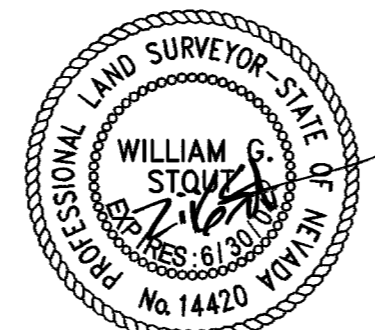
MATCHLINE - SEE SHEET 7 OF 8

MATCHLINE -  
SEE SHEET  
8 OF 8  
SHEET 4 OF 8



**SURVEYOR'S CERTIFICATE**

I, WILLIAM G. STOUT, A PROFESSIONAL LAND SURVEYOR LICENSED IN THE STATE OF NEVADA, DO HEREBY CERTIFY THAT THE MONUMENTS HAVE BEEN SET AND THE TIE DISTANCES ESTABLISHED AS SHOWN HEREON. THIS SURVEY WAS COMPLETED ON JUNE 27, 2003.



WILLIAM G. STOUT  
PROFESSIONAL LAND SURVEYOR  
NEVADA CERTIFICATE No. 14420  
8/11/03

96374

JOB# 88147028

058-4699

C.L.M.