

LEGEND

- FOUND MONUMENTATION AS DESCRIBED
 - △ SET BRASS CAP IN CONCRETE STAMPED "PLS 14420" UPON COMPLETION OF CONSTRUCTION
 - SET 5/8-INCH REBAR AND 1-1/2-INCH ALUMINUM CAP, STAMPED "W. STOUT PLS 14420" WITH REFERENCE MONUMENTS IN TOP OF CURB
 - CENTERLINE POINT OF INTERSECTION
 - SUBDIVISION BOUNDARY LINE
 - SECTION LINE
 - ALIQUOT PART LINE
 - RIGHT-OF-WAY LINE
 - STREET CENTERLINE
 - LOT LINE
 - ASSESSOR'S PARCEL LINE
 - EASEMENT LINE
- 1 LOT NUMBER
 RESIDENTIAL LOTS IN SUBDIVISION = 78
 NON-RESIDENTIAL LOTS IN SUBDIVISION = 2
 COMMON LOTS IN SUBDIVISION = 13
- S.F. SQUARE FEET
 L1 LINE NUMBER
 (1) CURVE NUMBER
 (R) RADIAL BEARING
 P.U.E. PUBLIC UTILITY EASEMENT
- ▨ SIGHT VISIBILITY RESTRICTION ZONE TO BE PRIVATELY MAINTAINED
 NO LANDSCAPING OR SIGHT RESTRICTION IMPROVEMENTS TALLER THAN 24 INCHES ALLOWED WITHIN THE AREAS HATCHED
- Ⓐ BLOCK NUMBER
 △ PRIVATE STREET, P.U.E., CITY OF LAS VEGAS SEWER EASEMENT AND PUBLIC DRAINAGE EASEMENT TO BE PRIVATELY MAINTAINED

CURVE	DELTA	RADIUS	LENGTH	TANGENT
1	56°55'01"	60.00'	59.60'	32.52'
2	05°47'10"	371.50'	37.52'	18.77'
3	52°24'44"	60.00'	54.89'	29.53'
4	52°52'25"	40.50'	37.37'	20.14'
5	21°15'20"	100.00'	37.10'	18.76'
6	132°30'40"	47.00'	108.70'	106.84'
7	90°00'00"	30.00'	47.12'	30.00'
8	44°00'23"	47.00'	36.10'	18.99'
9	52°01'10"	47.00'	42.57'	22.93'
10	36°29'06"	47.00'	29.93'	15.49'
11	12°40'35"	381.50'	84.40'	42.38'
12	12°40'35"	400.00'	88.50'	44.43'
13	12°40'35"	418.50'	92.59'	46.49'
14	07°42'26"	381.50'	51.32'	25.70'
15	04°58'09"	381.50'	33.09'	16.55'
16	10°57'19"	418.50'	80.02'	40.13'
17	01°43'16"	418.50'	12.57'	6.29'
18	06°27'17"	818.50'	92.21'	46.15'
19	03°18'30"	781.50'	45.13'	22.57'
20	00°08'54"	818.50'	2.12'	1.06'
21	86°41'30"	25.00'	37.83'	23.60'
22	90°09'00"	25.00'	39.34'	25.07'
23	78°27'47"	25.00'	34.24'	20.41'
24	08°13'43"	25.00'	3.59'	1.80'
25	89°51'21"	20.00'	31.37'	19.95'
26	85°03'47"	20.00'	29.89'	18.35'
27	56°35'13"	30.00'	29.63'	16.15'
28	56°17'34"	30.00'	29.47'	16.05'
29	05°31'22"	400.00'	38.56'	19.29'
30	05°47'10"	381.50'	38.53'	19.28'
31	00°14'12"	418.50'	1.73'	0.86'
32	89°53'27"	25.00'	39.22'	24.95'
33	18°50'38"	818.50'	269.19'	135.82'
34	18°50'38"	800.00'	263.11'	132.75'
35	12°35'21"	800.00'	175.78'	86.24'
36	06°15'17"	800.00'	87.33'	43.71'
37	06°34'16"	418.50'	48.00'	24.02'
38	04°46'20"	381.50'	31.78'	15.90'
39	30°00'00"	30.00'	15.71'	8.04'
40	60°00'00"	30.00'	31.42'	17.32'
41	276°46'12"	40.50'	195.64'	35.98'
42	01°21'13"	781.50'	18.46'	9.23'
43	29°51'00"	30.00'	15.63'	8.00'
44	26°26'34"	30.00'	13.85'	7.05'
45	99°56'44"	25.00'	43.61'	29.77'

LINE	BEARING	DISTANCE
L1	N44°55'40"W	28.32'
L2	N84°10'44"W	10.00'
L3	N45°04'30"E	28.25'
L4	N86°50'30"E	18.50'
L5	N00°02'06"E	197.29'
L6	N00°02'06"E	240.79'
L7	N00°08'39"E	10.00'
L8	N89°51'21"W	4.57'
L9	N15°13'11"E	7.95'
L10	N47°36'46"E	18.24'
L11	N44°55'41"W	19.75'
L12	N46°30'15"W	25.54'
L13	N16°18'58"W	25.52'
L14	N81°07'27"W	38.52'
L15	N89°51'21"W	33.05'
L16	N89°51'00"W	16.93'
L17	N45°04'30"E	26.93'
L18	N75°28'47"E	23.69'
L19	S89°51'21"E	11.60'
L20	S89°51'00"E	11.57'
L21	N45°04'19"E	35.42'
L22	N44°55'30"W	35.29'
L23	N12°36'38"W	170.20'
L24	N00°09'00"E	5.00'

MONUMENT TIE MAP

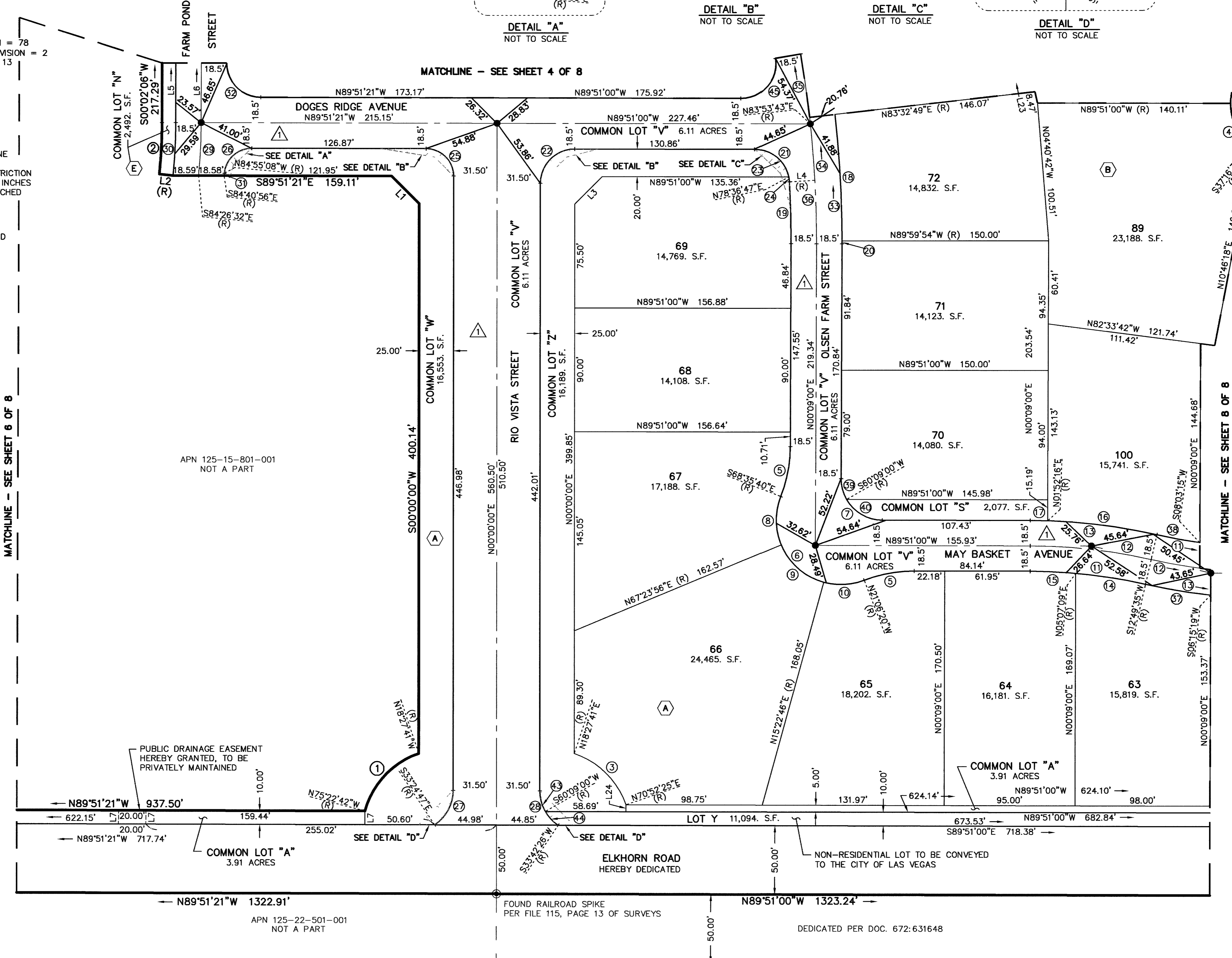
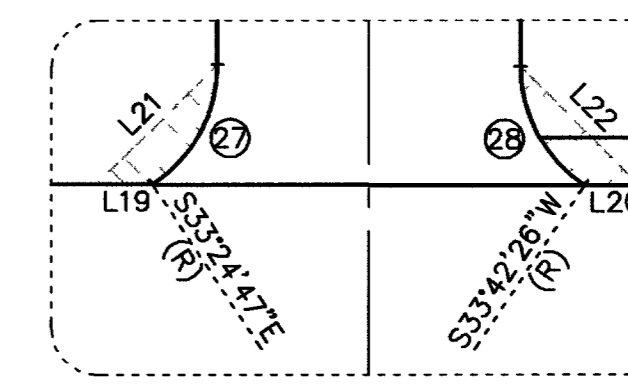
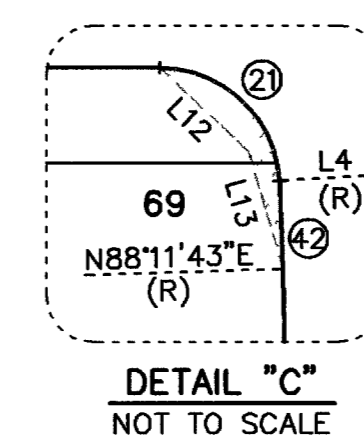
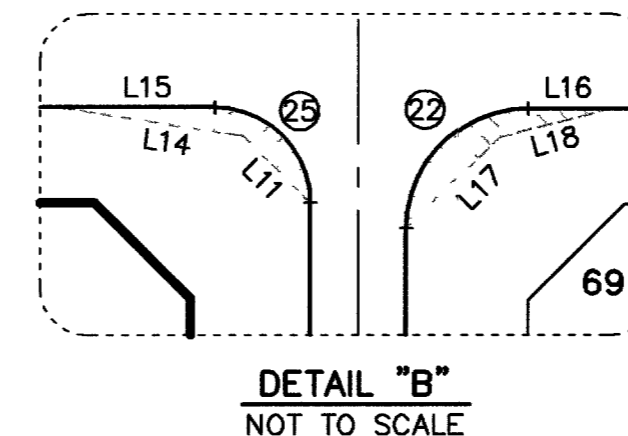
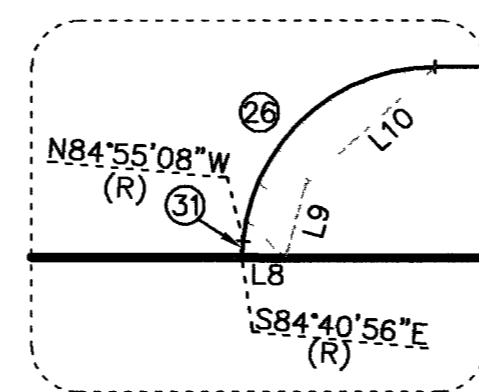
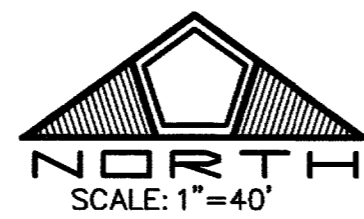
WYETH RANCH - UNIT 1

A COMMON INTEREST COMMUNITY

A PORTION OF THE SOUTH HALF (S 1/2) OF THE SOUTHEAST QUARTER (SE 1/4) OF SECTION 15, TOWNSHIP 19 SOUTH, RANGE 60 EAST, M.D.M., CITY OF LAS VEGAS, CLARK COUNTY, NEVADA

NOTES

- REAR PROPERTY CORNERS WILL BE SET WITH A REBAR AND ALUMINUM CAP STAMPED "PLS 14420" UNLESS A BLOCK WALL IS BUILT, THEN A NAIL AND BRASS TAG STAMPED "PLS 14420" WILL BE SET IN THE BLOCK WALL TO DENOTE THE SIDE PROPERTY LINE. FRONT PROPERTY CORNERS WILL BE WITNESSED BY A SAWCUT IN THE TOP OF CURB ON THE SIDE PROPERTY LINES, PROLONGATED.
- DIRECT VEHICULAR ACCESS TO RAINBOW BOULEVARD AND ELKHORN ROAD THROUGH COMMON LOTS FROM ABUTTING LOTS IS PROHIBITED.



1 MAY 2002

96376

JOB# 88147028

058-4699

C.L.M. SHEET 7 OF 8