

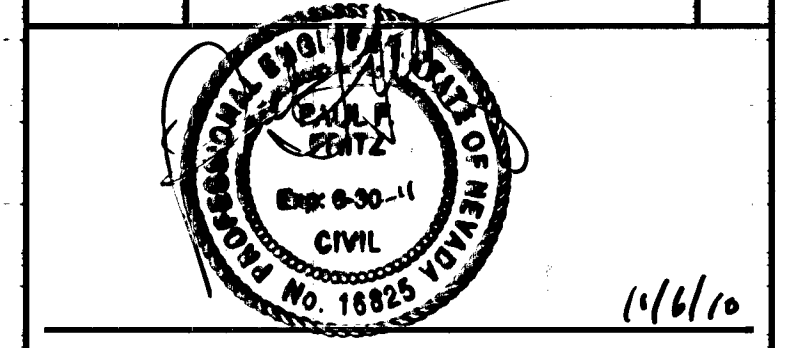
- PULVERIZATION NOTES**
1. THE CONTRACTOR IS REQUIRED TO SECURE A BUILDING PERMIT AND A PERMIT FOR ANY OFF-SITE CONSTRUCTION PRIOR TO COMMENCING WORK
  2. PULVERIZATION OPERATION WILL PENETRATE ENTIRE DEPTH OF EXISTING ASPHALT (±2-INCHES) AND WILL NOT EXCEED AN OVERALL DEPTH OF 6-INCHES
  3. PULVERIZED ASPHALT MATERIAL WILL NOT EXCEED 1-INCH DIAMETER. MATERIAL GREATER THAN 1-INCH WILL BE REMOVED OR BROKEN INTO PARTICLES LESS THAN 1-INCH IN DIAMETER
  4. MOISTURE CONDITION AND COMPACT PULVERIZED ASPHALT/BASE COURSE MIXTURE TO A MINIMUM OF 95% OF THE MAXIMUM DENSITY AS DETERMINED BY THE MODIFIED PROCTER, ASTM D1557
  5. COMPACTION OF THE PULVERIZED ASPHALT/BASE COURSE MIXTURE WILL BE PERFORMED WITH SMOOTH DRUM VIBRATORY EQUIPMENT. HAND COMPACTION EQUIPMENT MAY BE USED IN LIMITED ACCESS AREAS; HOWEVER, THE MINIMUM COMPACTION REQUIREMENTS MUST BE ACHIEVED
  6. THE CONTRACTOR SHALL CERTIFY TO THE CITY OF LAS VEGAS THAT ALL PULVERIZED/PROCESSED FILLS AND SUBGRADES MEET THE MINIMUM COMPACTION REQUIREMENTS. CERTIFICATIONS WILL BE MADE PRIOR TO FINAL INSTALLATIONS
  7. EXCESS PULVERIZED ASPHALT/BASE COURSE MATERIAL WILL BE REMOVED AND PROPERLY DISPOSED OF OFF-SITE
  8. PROTECT IN-PLACE ALL EXISTING CURB, GUTTER, SIDEWALKS, ETC. ANY FACILITIES DISPLACED OR DEMOLISHED BY CONTRACTOR WILL BE REPLACED IN-KIND AT NO COST TO THE OWNER
  9. PROTECT IN-PLACE ALL EXISTING UTILITIES INCLUDING HYDRANTS, VALVES, CLEANOUTS, METERS, VAULTS, BOXES, ETC. ANY UTILITY DISPLACED OR DEMOLISHED BY CONTRACTOR WILL BE REPLACED AT NO COST TO THE OWNER
  10. ALL SAWCUT EDGE CONDITIONS AT LIMITS OF PULVERIZATION WILL EXTEND 6-INCHES INTO THE NON-REMOVED PAVEMENT AREAS AND TO A SMOOTH EDGE
  11. ALL EXISTING WHEEL STOPS WILL BE REMOVED AND STORED FOR FUTURE RE-INSTALLATION. ALL BROKEN STOPS WILL BE NOTED AND VERIFIED PRIOR TO REMOVAL AND NEW WHEEL STOPS WILL BE INSTALLED
  12. EXISTING ACCESSIBLE RAMPS IN HANDICAP PARKING STRIPED AREAS WILL BE REMOVED AND NEW RAMPS WILL BE INSTALLED TO MEET 28 CFR PART 38 SECTION 4.7.6 AND CURRENT CITY OF LAS VEGAS CODE

**LEGEND**

— LIMITS OF PULVERIZATION/CONSTRUCTION

▨ AREA OF PULVERIZATION AND COMPACTION

Date	Description	No.
Revisions		



Paul F. Fritz DATE  
PROFESSIONAL CIVIL ENGINEER NV LIC. No.16825

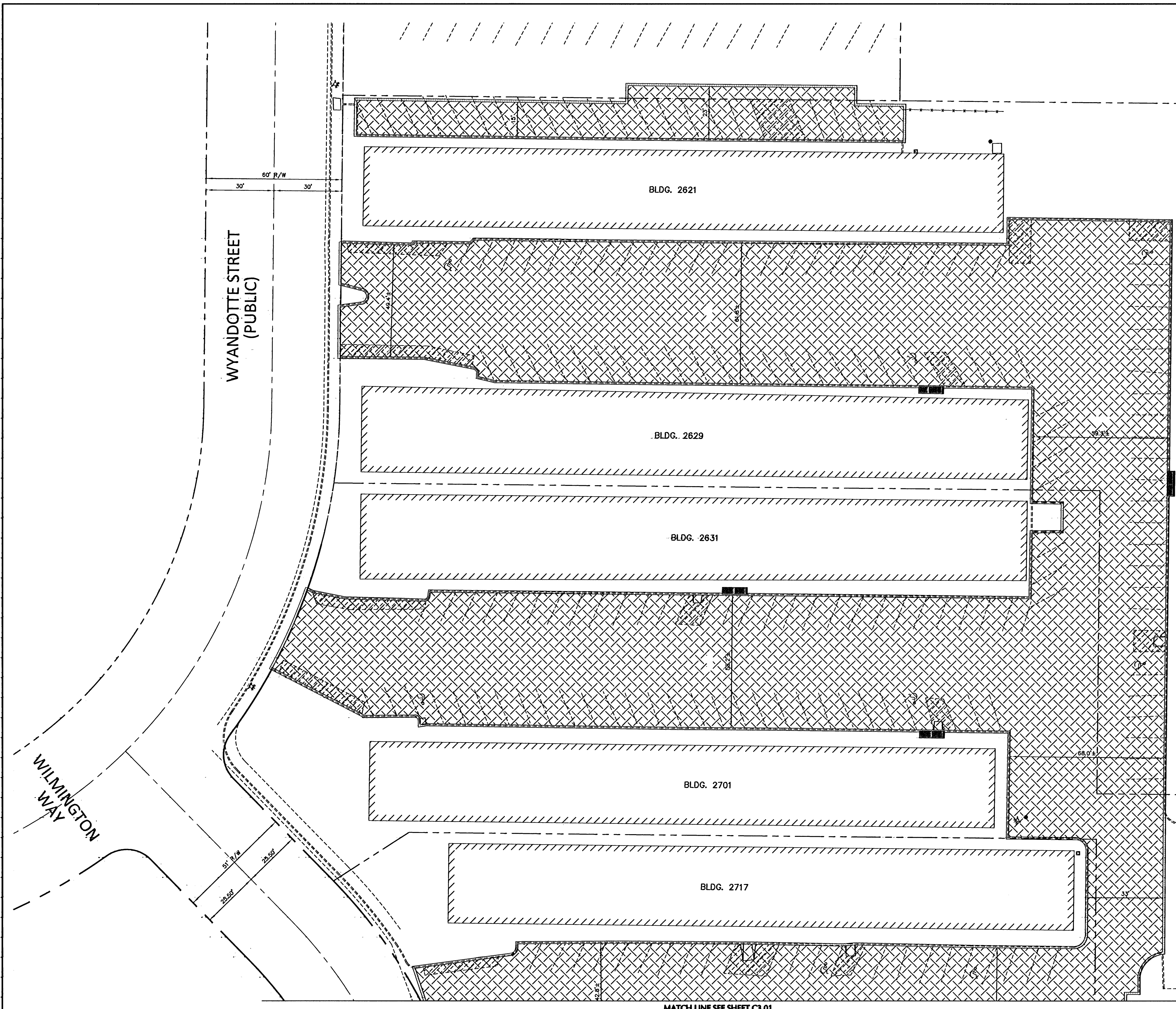
**LANGAN**  
ENGINEERING & ENVIRONMENTAL SERVICES

3900 Paradise Road  
Suite E  
Las Vegas, NV 89169  
P: 702.415.2040 F: 702.415.2041  
www.langan.com

NEW JERSEY PENNSYLVANIA NEW YORK CONNECTICUT  
NEVADA FLORIDA VIRGINIA CALIFORNIA

Project  
**WYANDOTTE APTS**  
LAS VEGAS  
CLARK COUNTY NV  
Drawing Title  
**PULVERIZATION PLAN NORTH**

Project No.	600019801	Drawing No.	<b>C3.02</b>
Date	08/23/2010		
Scale	1"=20'		
Drn. By	pff		
Last Revised	08/23/2010	4 Of 11	



MATCH LINE SEE SHEET C3.01

124893

CLV DWG. No. 107V5524