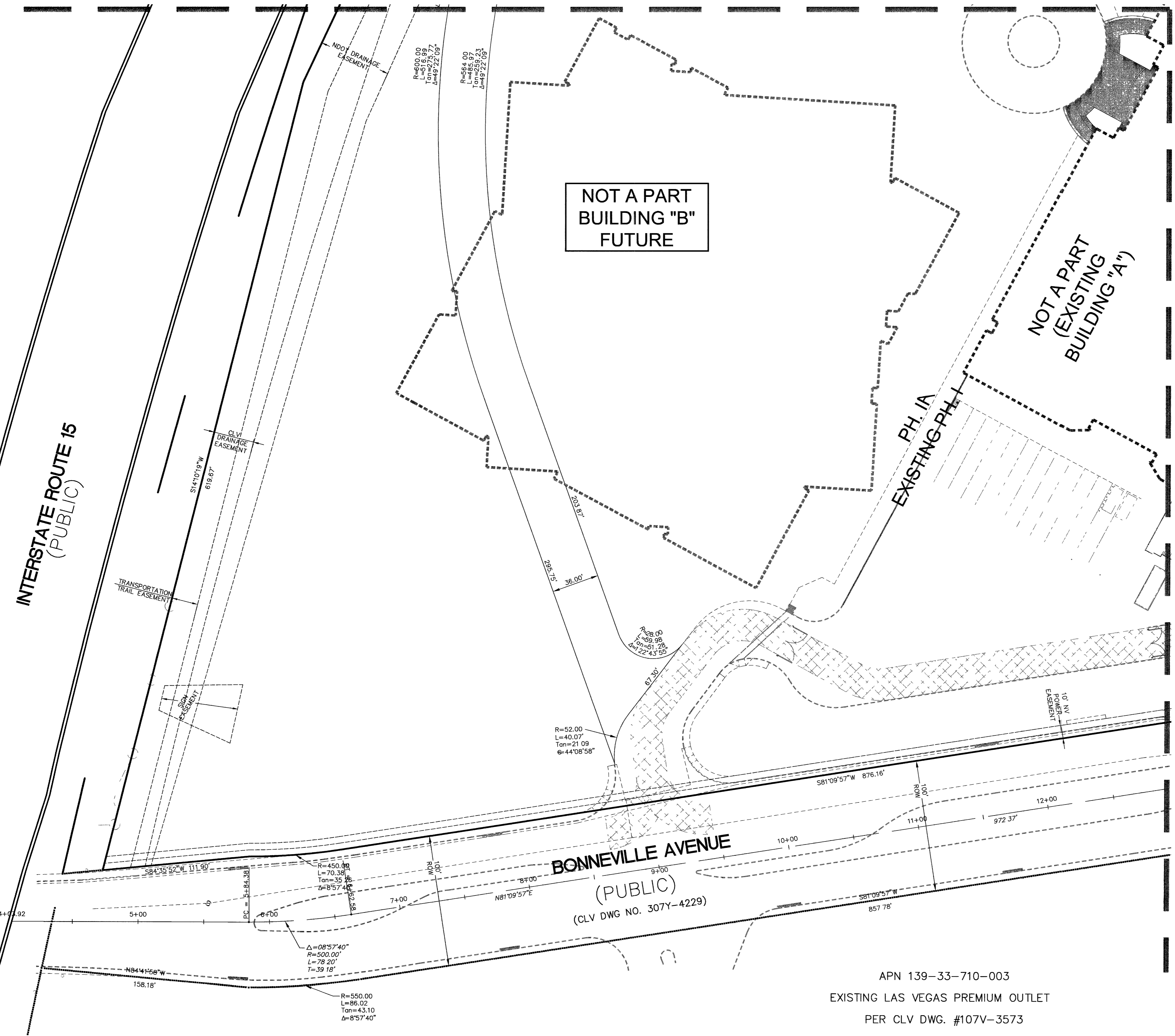


FOR CONTINUATION  
SEE SHEET H-3



NOT A PART  
BUILDING "B"  
FUTURE

NOT A PART  
(EXISTING  
BUILDING "A")

PH. 1A  
EXISTING PH. 1

FOR CONTINUATION  
SEE SHEET H-2

INTERSTATE ROUTE 15  
(PUBLIC)

BONNEVILLE AVENUE  
(PUBLIC)  
(CLV DWG NO. 307Y-4229)

APN 139-33-710-003  
EXISTING LAS VEGAS PREMIUM OUTLET  
PER CLV DWG. #107V-3573

**BASIS OF BEARINGS**  
N 24°55'16" E BEING THE BEARING OF THE CENTERLINE OF GRAND CENTRAL PARKWAY, LYING WITHIN THE N.E. 1/4 OF SECTION 33, TOWNSHIP 20 SOUTH, RANGE 61 EAST, M.D.M., CLARK COUNTY, NEVADA AS SHOWN BY MAP THEREOF ON FILE ON BOOK 53, PAGE 61 OF PLATS IN THE CLARK COUNTY RECORDER'S OFFICE, CLARK COUNTY, NEVADA.

**BENCHMARK**  
CITY OF LAS VEGAS BENCHMARK NO. 2LV01 3304, RIVET AND PLATE IN TOP OF CURB AT THE S.W. CORNER OF THE INTERSECTION OF ALTA DR. AND MARTIN LUTHER KING BLVD.  
NAVD 88 CITY OF LAS VEGAS ELEVATION (1992) = 2046.76 (F)  
CORRECTION TO CITY OF LAS VEGAS DATUM (2002): SUBTRACT 0.17' FROM 1992 DATUM

Avoid cutting underground utility lines. It's costly.  
**Call before you Dig.**  
1-800-227-2600  
UNDERGROUND SERVICE (USA)

AVOID HITTING OVERHEAD POWER LINES. IT'S COSTLY.  
CALL BEFORE YOU DIG OVERHEAD  
**1-702-227-2929**

Call before you UnderGround  
**1-702-455-7511**  
**1-702-229-6611**

WORLD MARKET CENTER  
PHASE 1A  
WMC ASSOCIATES, LLC  
HORIZONTAL CONTROL PLAN 1  
DRAWING  
**H-1**  
3 OF 35 SHEETS

REV.	DATE	DESCRIPTION
1	04-05-05	ISSUE DATE: 3-29-05
2	11-27-02	MYLAR SUBMITTAL

DESIGN: \_\_\_\_\_  
CHECK: \_\_\_\_\_  
ISSUE DATE: \_\_\_\_\_  
ISSUE EDITOR: \_\_\_\_\_  
PLOT DATE: 04-05-05  
PLOT TIME: 11:27:32  
G:\1919-298\dwg\Comm\mprova\WMC\H01.dwg  
G:\Barnhart