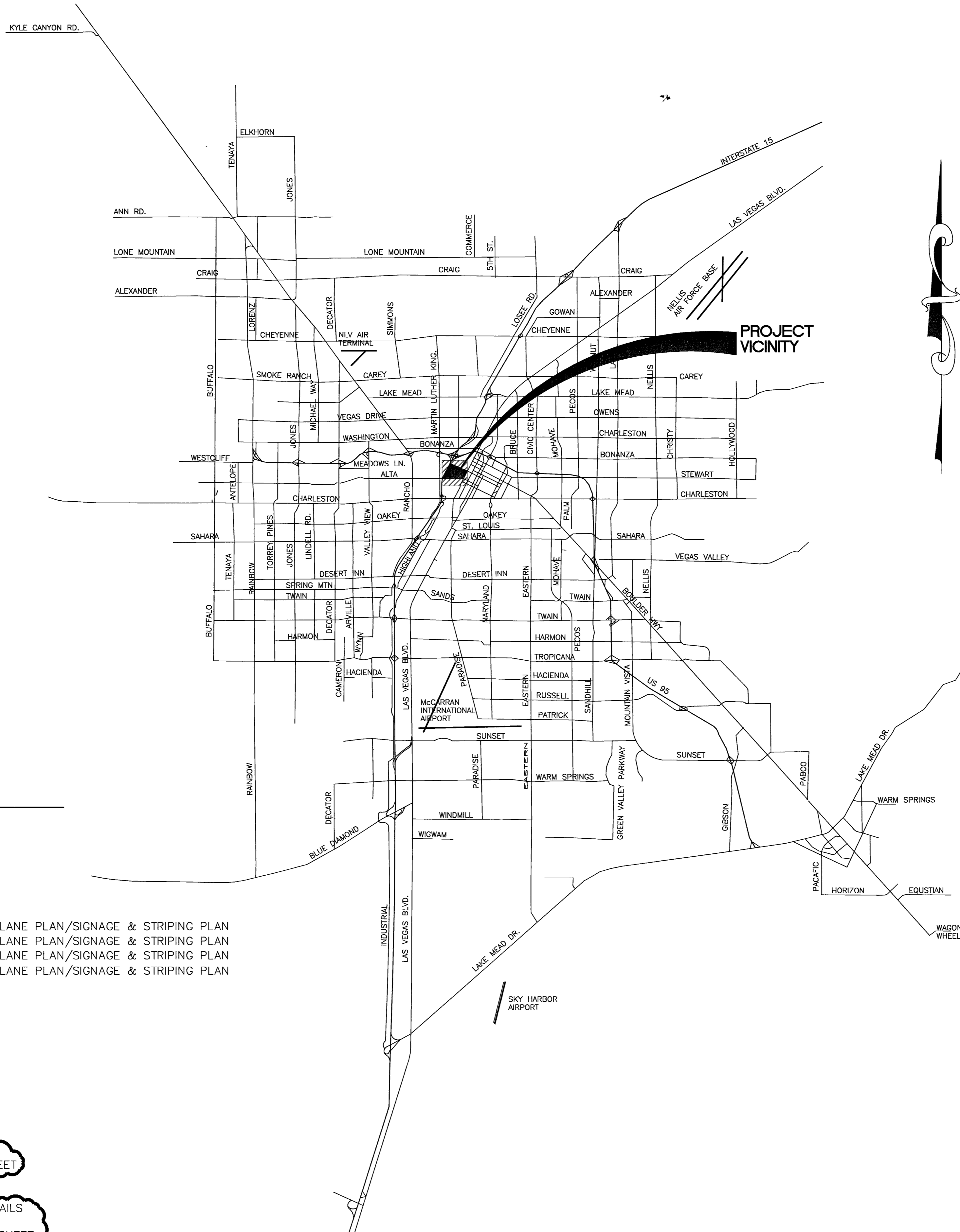


BASIS OF BEARING
 MONUMENT CENTERLINE OF BONNEVILLE AVENUE,
 BEING N 81°09'57" E AS DELINEATED ON
 "PARKWAY CENTER" BOOK 53, PAGE 61 OF PLATS.

BENCHMARK
 CITY OF LAS VEGAS BM NO. 0LV01 33E6,
 A RIVET AND SQUARE PLATE IN THE NORTHWEST CURB RETURN
 OF BONNEVILLE AVE. @ GRAND CENTRAL PARKWAY
 ELEV: 2036.09 NAVD 88

SHEET INDEX

SHEET #	SHEET	DESCRIPTION
1	C1.01	COVER SHEET
2	C1.02	VICINITY MAP AND QUANTITIES
3	C1.03	GENERAL NOTES SHEET
4	C1.04	OVERALL SITE PLAN
	C2.00	NOT USED
5	C3.01	HORIZONTAL CONTROL & FIRE LANE PLAN/SIGNAGE & STRIPING PLAN
6	C3.02	HORIZONTAL CONTROL & FIRE LANE PLAN/SIGNAGE & STRIPING PLAN
7	C3.03	HORIZONTAL CONTROL & FIRE LANE PLAN/SIGNAGE & STRIPING PLAN
8	C3.04	HORIZONTAL CONTROL & FIRE LANE PLAN/SIGNAGE & STRIPING PLAN
9	C3.05	HORIZONTAL CONTROL TABLES
10	C4.01	GRADING PLAN
11	C4.02	GRADING PLAN
12	C4.03	GRADING PLAN
13	C4.04	GRADING PLAN
14	C4.05	STORM DRAIN DETAILS
	C5.01	UTILITY PLAN
15	C5.02	UTILITY PLAN
16	C5.03	UTILITY PLAN
17	C5.04	UTILITY PLAN
	C6.00	NOT USED
18	C7.01	TRAFFIC SIGNALIZATION PLAN
19	C7.02	TRAFFIC NOTES & DETAILS SHEET
20	C8.01	DETAIL SHEET
21	C8.02	DETAIL SHEET
22	C8.03	STORM DRAIN DROP INLET DETAILS TYPE "C" MODIFIED INLET
23	C8.04	LIFT STATION & INLET DETAIL SHEET
24	C8.05	LIFT STATION & VAULT DETAIL
25	C8.06	LIFT STATION & VAULT DETAIL



QUANTITIES

STREET	(PUBLIC) OFFSITE	UNIT
REMOVE CURB & GUTTER	1076	LF
REMOVE SIDEWALK	5376	SF
4" A.C. PAVEMENT	984	SY
ROADWAY EXCAVATION	1000	CY
TYPE II AGGREGATE BASE	573	CY
"L" TYPE CURB AND GUTTER	932	LF
CONCRETE SIDEWALK	5516	SF
HANDICAP RAMPS	5	EA
CONCRETE DRIVEWAY	2703	SF
SIDEWALK UNDERDRAIN	5	EA
6" CONCRETE PAVEMENT	2032	SY
MISC. TRENCHING	82	LF

STORM DRAIN	(PUBLIC) OFFSITE	UNIT
18" RCP STORM DRAIN	894	LF
30" HDPE STORM DRAIN	114	LF
36" HDPE STORM DRAIN	46	LF
(3) 14"x23" HE	2	EA
60" STORM DRAIN MANHOLE	3	EA
MODIFIED TYPE "CM" DROP INLET	1	EA
MODIFIED TYPE "A" DROP INLET		

WATER	(PUBLIC) OFFSITE	UNIT
8" PVC WATER LINE	40	LF
6" PVC WATER LINE	25	LF
FIRE HYDRANT ASSEMBLY	1	EA
FIRE HYDRANT RELOCATION	1	EA
12"x8" TAPPING TEE W/8" TAPPING VALVE	2	EA
12"x6" TAPPING TEE W/6" TAPPING VALVE	1	EA

MISC.	(PUBLIC) OFFSITE	UNIT
STREET/STOP SIGNS	7	EA
HANDICAP SIGNS	-	EA
STRIPING	-	LF
PRECAST BUMPER BLOCKS	-	EA
TRAFFIC SIGNAL	1	EA
TRAFFIC SIGNAL PULL BOX	2	EA
2-3" TRAFFIC SIGNAL CONDUIT	341	LF

EARTHWORK	(PRIVATE) ONSITE	(PUBLIC) OFFSITE	UNIT
EARTHWORK FILL	3764	-	CY
EARTHWORK CUT	26943	-	CY

no	description of revisions	date	name
1	ADDED SHEETS C7.01, C7.02, C8.03, C8.04 & C8.05	3/7/05	JRW
2	UPDATED QUANTITIES		

WORLD MARKET CENTER
 350 S. Beverly Hills Dr., Suite 330
 Beverly Hills CA. 90212
 phone: (310)284-8600
 fax: (310)284-8100

MARTIN & MARTIN
 CIVIL ENGINEERS
 2101 S. JONES, SUITE 120
 LAS VEGAS, NV 89102
 PHONE: (702) 248-8800
 FAX: (702) 248-8070
 E-MAIL: MARTIN@MVM.COM

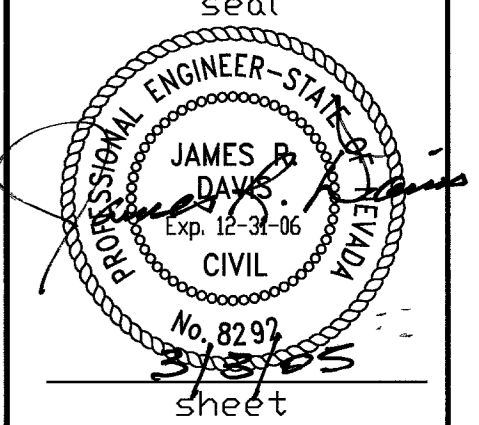
VICINITY MAP AND QUANTITIES

sheet

title

WORLD MARKET CENTER
 PHASE I

date 9/12/03
 job number 1913.01
 design by JON R. WAKENHUT, P.E.
 drawn by D. BUTZ
 checked by JAMES R. DAVIS, P.E.



APPROVED FOR CONSTRUCTION 1ST TIME 4/22/04
 LAS VEGAS VALLEY WATER DISTRICT 3/19/05 DATE

C1.02
 SHEET 2 OF 25
 drawing number 107V3916