

BASIS OF BEARING
MONUMENT CENTERLINE OF BONNEVILLE AVENUE,
BEING N 81°09'57" E AS DELINEATED ON
"PARKWAY CENTER" BOOK 53, PAGE 61 OF PLATS.

BENCHMARK
CITY OF LAS VEGAS BM NO. 0LV01 33E6,
A RIVET AND SQUARE PLATE IN THE NORTHWEST CURB RETURN
OF BONNEVILLE AVE. @ GRAND CENTRAL PARKWAY
ELEV: 2036.09 NAVD 88

WATER CONSTRUCTION NOTES

No.	ITEM
1	*UDS PLATE NO. PER UNIFORM DESIGN AND CONSTRUCTION STANDARDS FOR WATER DISTRIBUTION SYSTEMS
2	INSTALL 12" WATERLINE (PVC, C-900 CL 150) PER UDS PLATE NO. 6A & 6C
3	INSTALL 10" WATERLINE (PVC, C-900 CL 200 F, CL 150 W) PER UDS PLATE NO. 6A & 6C
4	INSTALL 8" WATERLINE (PVC, C-900 CL 200 F, CL 150 W) PER UDS PLATE NO. 6A & 6C
5	INSTALL 6" WATER LATERAL (PVC, C-900 CL 200 F, CL 150 W) PER UDS PLATE NO. 6A & 6C
6	INSTALL FIRE HYDRANT INCLUDING GATE VALVE INSTALLATION PER UDS PLATE NO. 7
7	INSTALL 10" REDUCED PRESSURE PRINCIPLE ASSEMBLY PER UDS PLATE NO. 11C
8	INSTALL 8" MFM II W/4" MHR PER UDS PLATE NO. 21D
9	INSTALL GATE VALVE & BOX PER UDS PLATE NO. 8 (SAME SIZE AS LINE)
10	INSTALL 12" X 10" REDUCER
11	INSTALL 4 WAY FREE STANDING FIRE DEPARTMENT CONNECTION WITH 6" STAND PIPE & CHECK VALVE (CROKER 6530 OR EQUAL)
12	INSTALL 12" X 8" TAPPING TEE W/8" TAPPING VALVE PER UDS PLATE NO. 22
13	INSTALL 12" X 6" TAPPING TEE W/6" TAPPING VALVE PER UDS PLATE NO. 22
14	SEE PLUMBING PLAN FOR CONTINUATION
15	UNDERGROUND FIRE PROTECTION WATER STORAGE TANK - SEE PLUMBING PLANS
16	INSTALL SECTIONAL CONTROL VALVE PER CITY OF LAS VEGAS FIRE DEPARTMENT NOTE NO. 18
17	INSTALL 8" WATER LINE CROSSING UNDER THE NV POWER CONDUIT PER UDS PLATE NO. 15
18	INSTALL 6" FIRE HYDRANT LATERAL WATER LINE CROSSING UNDER THE NV POWER CONDUIT PER UDS PLATE NO. 7 & 15

SEWER CONSTRUCTION NOTES

No.	ITEM
1	*SD STD. PER DESIGN AND CONSTRUCTION STANDARDS FOR WASTEWATER COLLECTION SYSTEMS
2	INSTALL 48" DIA. SEWER MANHOLE PER STD DWG NO. SD-1
3	INSTALL 8" DIA. PVC SDR-35 SEWER MAIN
4	INSTALL CLEAN OUT PER UPC SECTION 707 (CLEAN OUT SIZE SAME AS LINE SIZE) WHERE CLEANOUT OCCURS IN PAVEMENT INSTALL A TRAFFIC BEARING LID
5	INSTALL WYE WITH 45° BEND
6	INSTALL 6" DIA. PVC SDR-35 SEWER LATERAL
7	SEE PLUMBING PLAN FOR CONTINUATION

FIRE FLOW CALCULATIONS

FIRE FLOW REQUIREMENTS IS: 4,500 GALLONS PER MINUTE AT 20 PSI RESIDUAL PRESSURE.

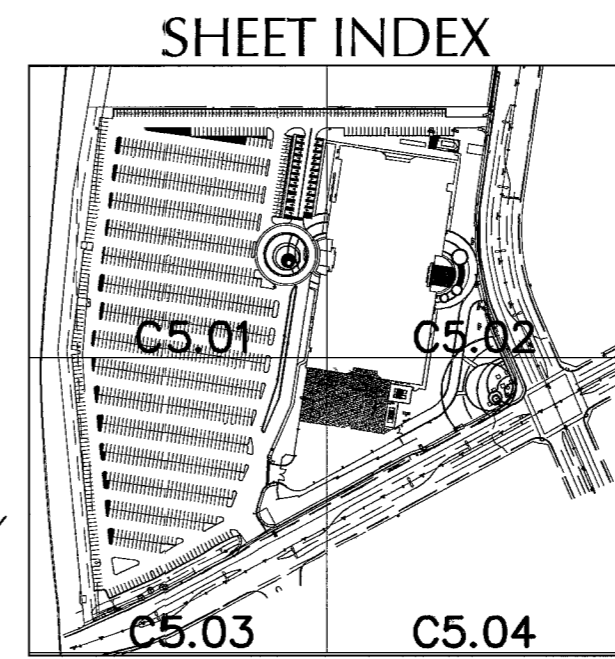
BASED ON:

SQUARE FOOTAGE (TOTAL)	1.4 M	SQUARE FEET
LARGEST AREA BETWEEN 4-HOUR AREA SEPARATION WALLS:	N/A	SQUARE FEET
BUILDING HEIGHT:	180	
NUMBER OF STORIES:	10	
TYPE OF CONSTRUCTION:	1-FR	
OCCUPANCY:	M	
FULL AUTOMATIC FIRE SPRINKLER SYSTEM:	YES	

REVIEW BY: *[Signature]*
DATE: 3-9-05

SIGHT VISIBILITY ZONE:
NO STRUCTURE, VEGETATION OR OBJECT OF ANY KIND IS PERMITTED OVER TWENTY-FOUR (24) INCHES IN HEIGHT (MEASURED FROM THE TOP OF THE ADJACENT CURB IF CURB EXISTS) WITHIN THE SITE VISIBILITY ZONES

NOTE:
ALL ONSITE STORM DRAIN PIPE TO BE HANGOR SURE-LOK F477 HDPE OR EQUIVALENT. MIN. COVER = 12" (0.3 M)



RELOCATION OF FIRE HYDRANTS
(EXTENSION OF EXISTING LATERAL) THE CONTRACTOR SHALL REMOVE AND RELOCATE BOTH THE UPPER AND LOWER BARRELS OF THE EXISTING FIRE HYDRANT(S) WHERE SHOWN, EXTEND THE EXISTING LATERAL AS REQUIRED, AND REINSTALL SUCH HYDRANT(S) AT THE NEW LOCATION(S) INDICATED. FIRE HYDRANTS SHALL BE TESTED PRIOR TO AND AFTER RELOCATION, UNDER THE DIRECTION OF THE DISTRICT TO ENSURE QUALITY. INSTALLATION SHALL BE IN ACCORDANCE WITH UDACS PLATE 7. LATERALS MADE OF UNAPPROVED MATERIALS SHALL BE REPLACED FROM THE MAIN TO THE FIRE HYDRANT. RELOCATIONS WHERE THE LATERAL CANNOT BE EXTENDED SHALL BE TREATED AS NEW INSTALLATIONS. ESN.015

WATER METERING REQUIREMENTS FOR NEW DEVELOPMENTS
A) SEPARATE DOMESTIC AND FIRE SERVICES (WHERE APPLICABLE) ARE REQUIRED FOR EACH DWELLING UNIT, PUBLIC, QUASI-PUBLIC, COMMERCIAL, AND/OR INDUSTRIAL OCCUPANCY IS LOCATED ON A SINGLE PARCEL OR LOT.
B) IN THE EVENT THAT A BUILDING WITHIN AN INDUSTRIAL OR COMMERCIAL SUBDIVISION IS DIVIDED, SEPARATE DOMESTIC SERVICES ARE REQUIRED FOR EACH UNIT.
C) EACH PARCEL OR LOT OF A COMMERCIAL OR RESIDENTIAL SUBDIVISION WILL HAVE A MINIMUM OF ONE (1) METERED DOMESTIC SERVICE IS REQUIRED, EACH PARCEL OR LOT WILL HAVE A MINIMUM OF ONE (1) FIRE SERVICE. THE CITY, AT ITS OPTION, MAY ALLOW A COMMUNAL FIRE MANAGEMENT ASSOCIATION WHICH ACCEPTS RESPONSIBILITY FOR THE PAYMENT OF WATER BILLS AND THE MAINTENANCE AND OPERATIONS OF THE FIRE LINES AND BACK FLOW PREVENTION ASSEMBLY.

GENERAL NOTE:
IT IS THE CONTRACTORS RESPONSIBILITY TO FILE A NOTICE OF INTENT/REQUEST TO BE INCLUDED IN THE STORM WATER GENERAL PERMIT, AND SUBMIT THE ASSOCIATED STORMWATER POLLUTION PREVENTION PLAN (SPPP) AS REQUIRED BY FEDERAL LAW, AND MONITORED BY THE NEVADA DIVISION OF ENVIRONMENTAL PROTECTION.

NOTE:
FOR STORM DRAIN DESIGN REFER TO SHEETS C4.01 - C4.04 (GRADING PLAN)

NOTE:
ALL SEWER/STORM DRAINS CROSSING WATER LINES MUST CONFORM TO SECTION 2.19 OF THE UNIFORM DESIGN AND CONSTRUCTION STANDARDS FOR POTABLE WATER SYSTEMS (UDACS) FOR WATER AND STORM MAIN CROSSINGS AND CLEARANCES. ESN.064

NOTE:
ALL SEWER/STORM DRAINS CROSSING WATER LINES MUST CONFORM TO SECTION 2.19 OF THE UNIFORM DESIGN AND CONSTRUCTION STANDARDS FOR POTABLE WATER SYSTEMS (UDACS) FOR WATER AND STORM MAIN CROSSINGS AND CLEARANCES. ESN.064

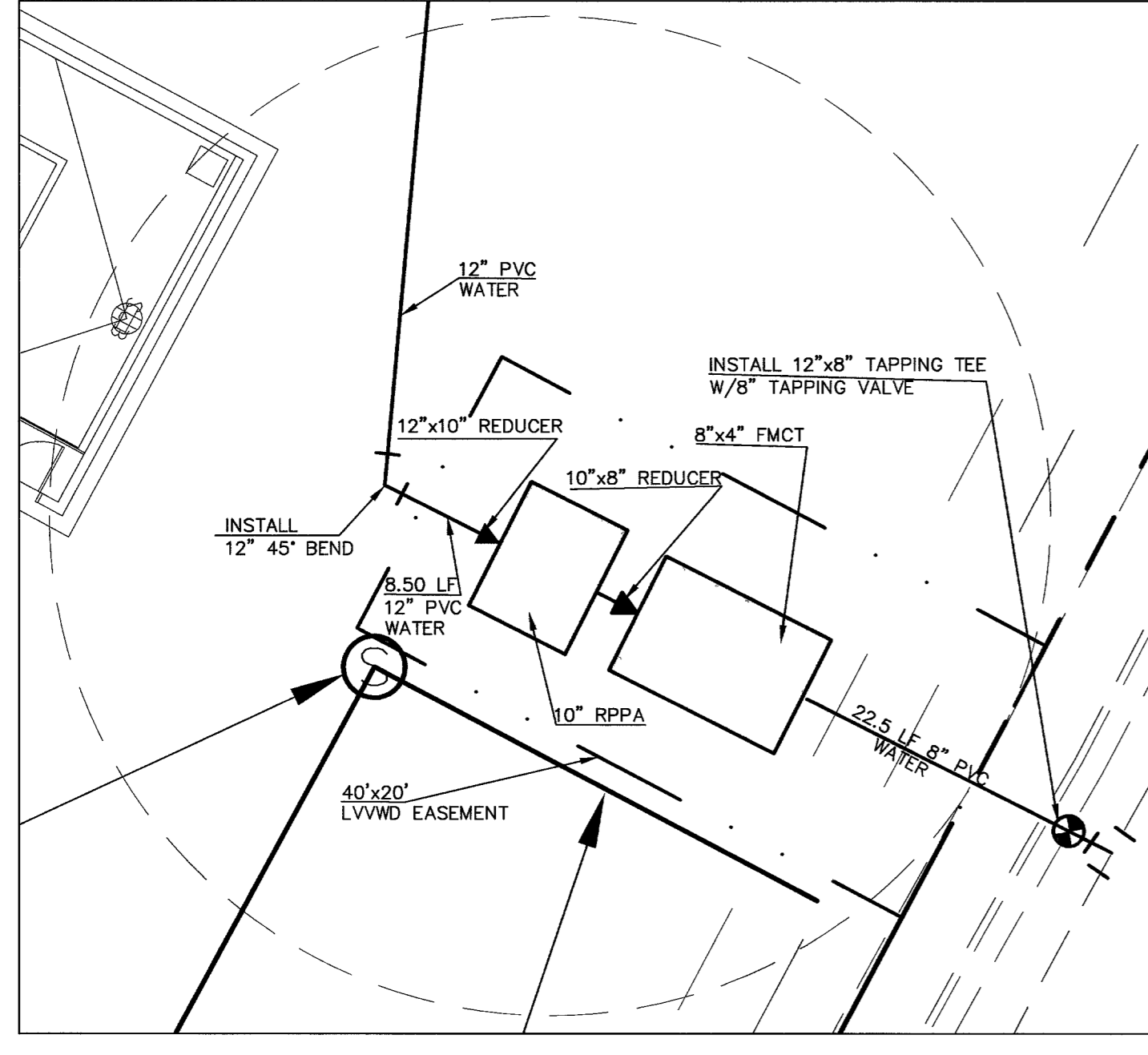
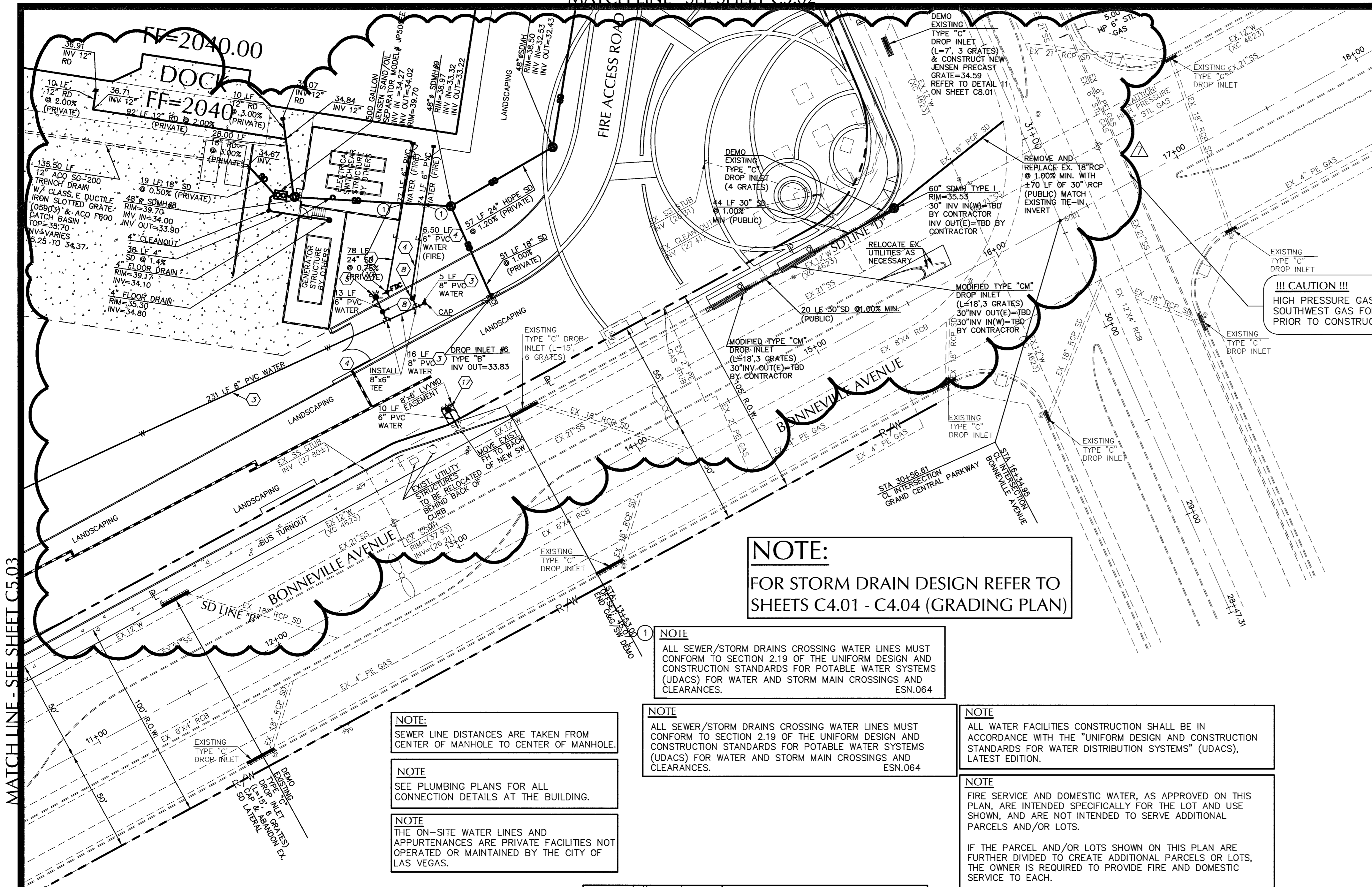
NOTE:
FIRE SERVICE AND DOMESTIC WATER, AS APPROVED ON THIS PLAN, ARE INTENDED SPECIFICALLY FOR THE LOT AND USE SHOWN, AND ARE NOT INTENDED TO SERVE ADDITIONAL PARCELS AND/OR LOTS.

IF THE PARCEL AND/OR LOTS SHOWN ON THIS PLAN ARE FURTHER DIVIDED TO CREATE ADDITIONAL PARCELS OR LOTS, THE OWNER IS REQUIRED TO PROVIDE FIRE AND DOMESTIC SERVICE TO EACH.

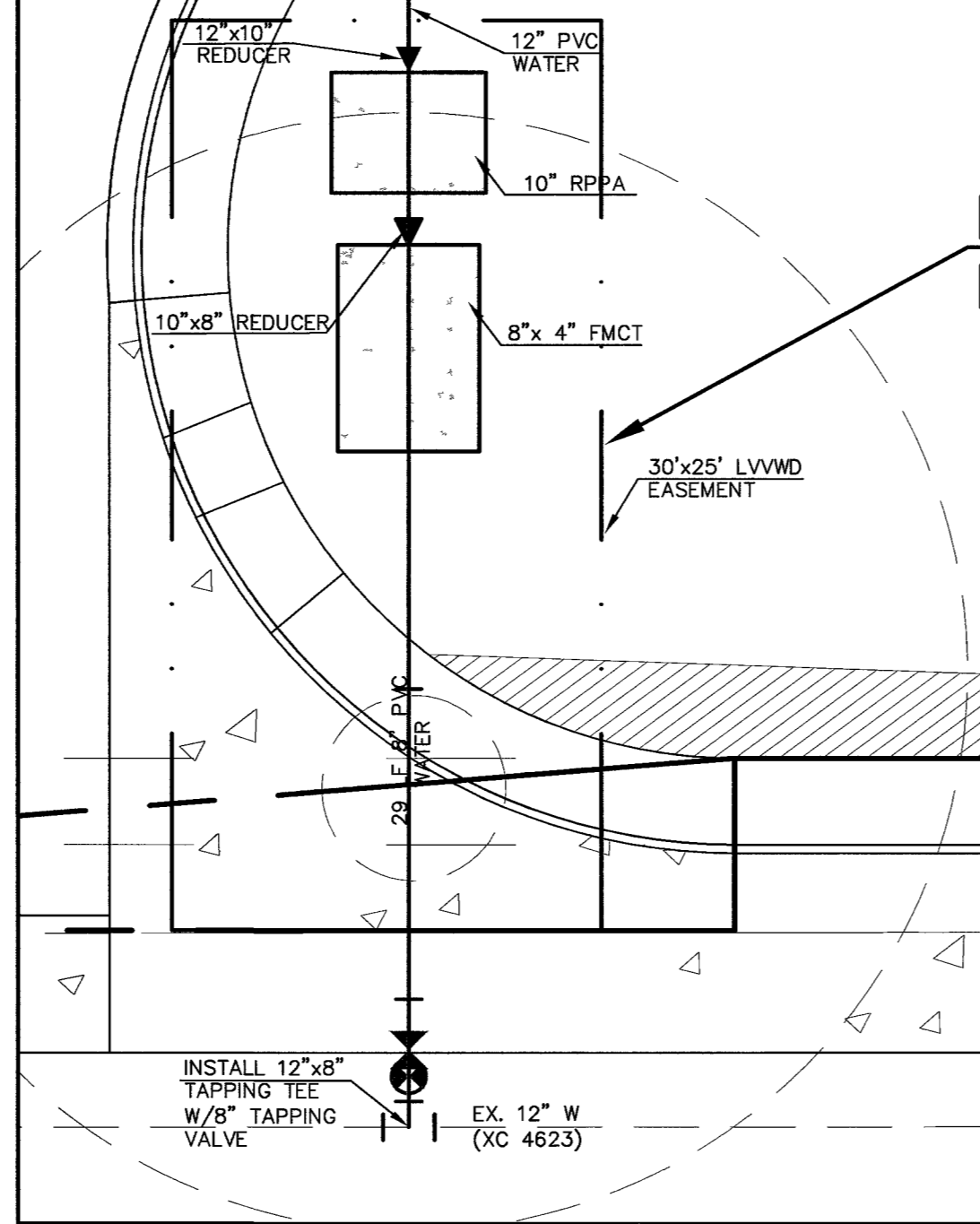
NOTE:
SEWER LINE DISTANCES ARE TAKEN FROM CENTER OF MANHOLE TO CENTER OF MANHOLE.

NOTE:
SEE PLUMBING PLANS FOR ALL CONNECTION DETAILS AT THE BUILDING.

NOTE:
THE ON-SITE WATER LINES AND APPURTENANCES ARE PRIVATE FACILITIES NOT OPERATED OR MAINTAINED BY THE CITY OF LAS VEGAS.



DETAIL "A"
SCALE 1"=10'



DETAIL "B"
SCALE 1"=10'

name	date
REV. WATER DETAIL	3/05/04
REVISED ENTIRE SITE	3/17/05

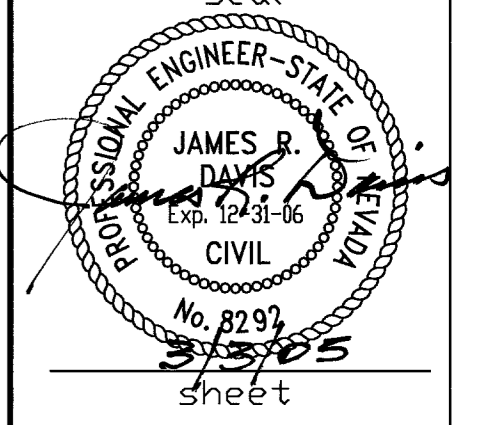
WORLD MARKET CENTER 330
Beverly Hills Dr., Suite
Beverly Hills CA, 90212
phone: (310)284-8600
fax: (310)284-8100

MARTIN & MARTIN
ENGINEERS
2101 S. JONES, SUITE 120
LAS VEGAS, NV 89146
PHONE: (702) 248-8000
FAX: (702) 248-8070

UTILITY PLAN

WORLD MARKET CENTER
PHASE I

date	job number	design by	drawn by	checked by
9/12/03	1913.01	JON R. WAKENHUT, P.E.	D. BUTZ	JAMES R. DAVIS, P.E.



C5.04
SHEET 17 OF 25
drawing number
10703916

APPROVED FOR CONSTRUCTION 127 APR 2 9/22/04
LAS VEGAS VALLEY WATER DISTRICT
DATE 3/19/05