

ENGINEER'S CERTIFICATE

I, G. F. Rittenhouse, do certify that this is a true and accurate map showing certain open spaces in Plot J and Plot K, subdivided into lots at the instance of the City of Las Vegas, and that the location of said lots have been definitely established and perpetuated in strict accordance with the law and as shown hereon.

City Engineer

APPROVAL

Approved this ___ day of _____ 1944 by the Board of City Commissioners of the City of Las Vegas, County of Clark, State of Nevada, by resolution

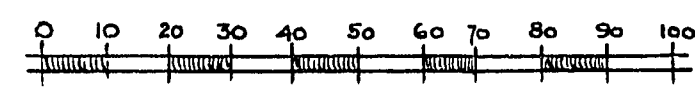
by _____ Mayor

Attest: _____ Clerk

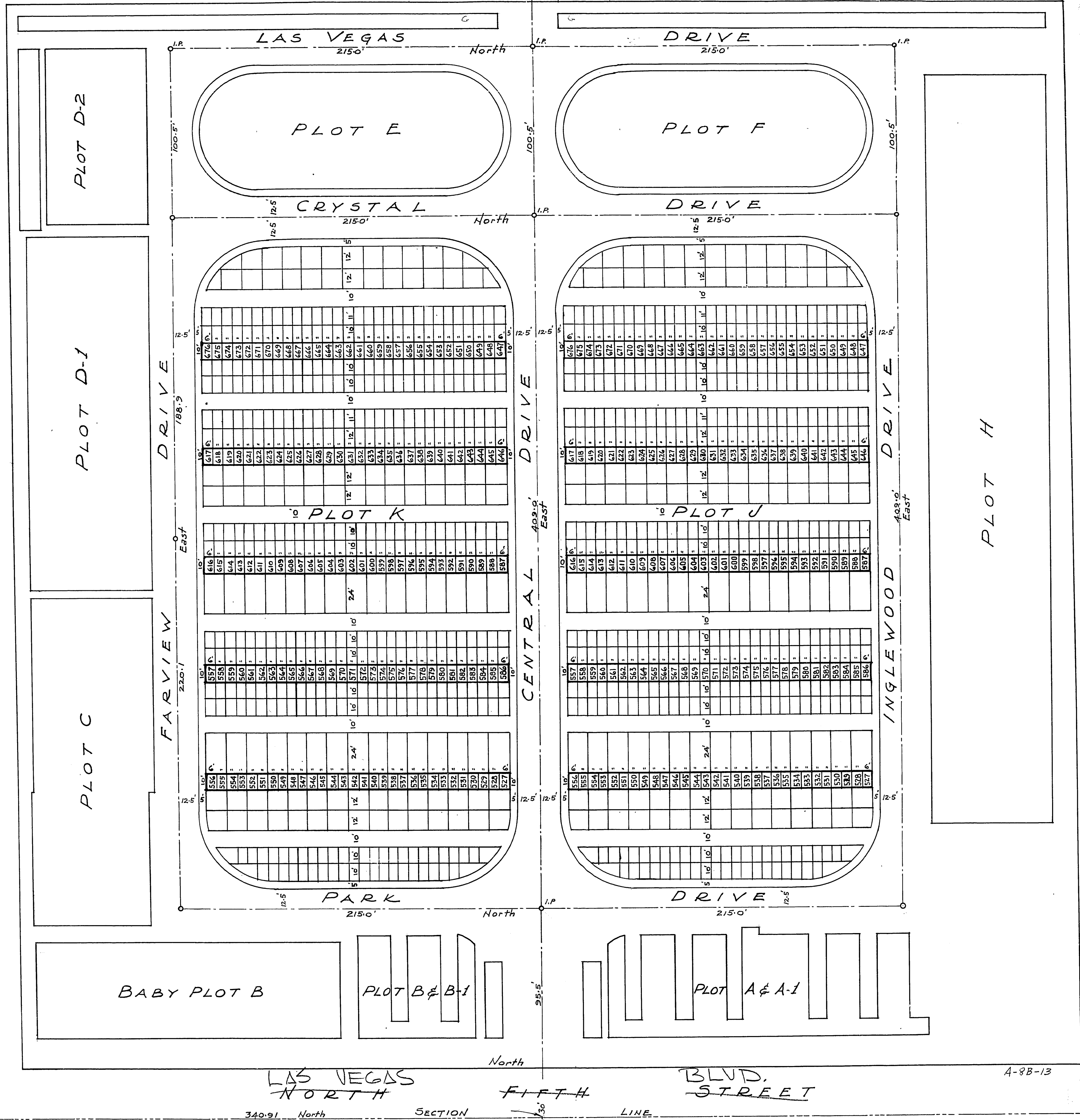
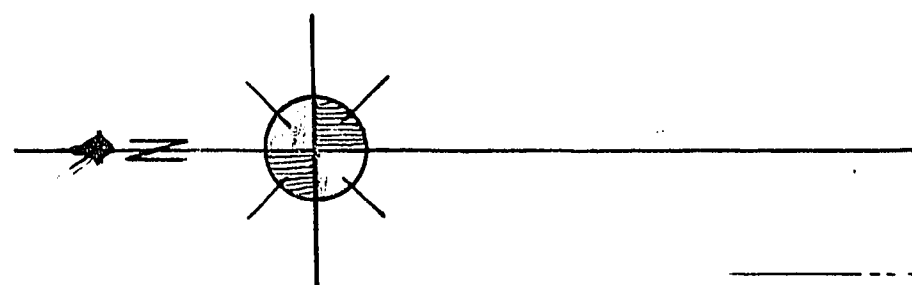
No. _____
 Recorded at request of
 G. F. Rittenhouse, City Engineer
 1944
 at ___ min. past ___ m
 in Book ___ page of Plats.
 CLARK COUNTY NEVADA RECORDS
 David Farnsworth, Recorder
 Deputy
 Fee. _____ Compared _____

**WOODLAWN
 CEMETERY
 LAS VEGAS - NEVADA**

SUBDIVISION OF CERTAIN OPEN SPACES
 IN PLOT J & PLOT K OF AMENDED PLAT
 RECORDED IN BOOK 2, PAGE 60 OF PLATS



Scale 1 in = 30 ft.



PLOT H

121-51-101