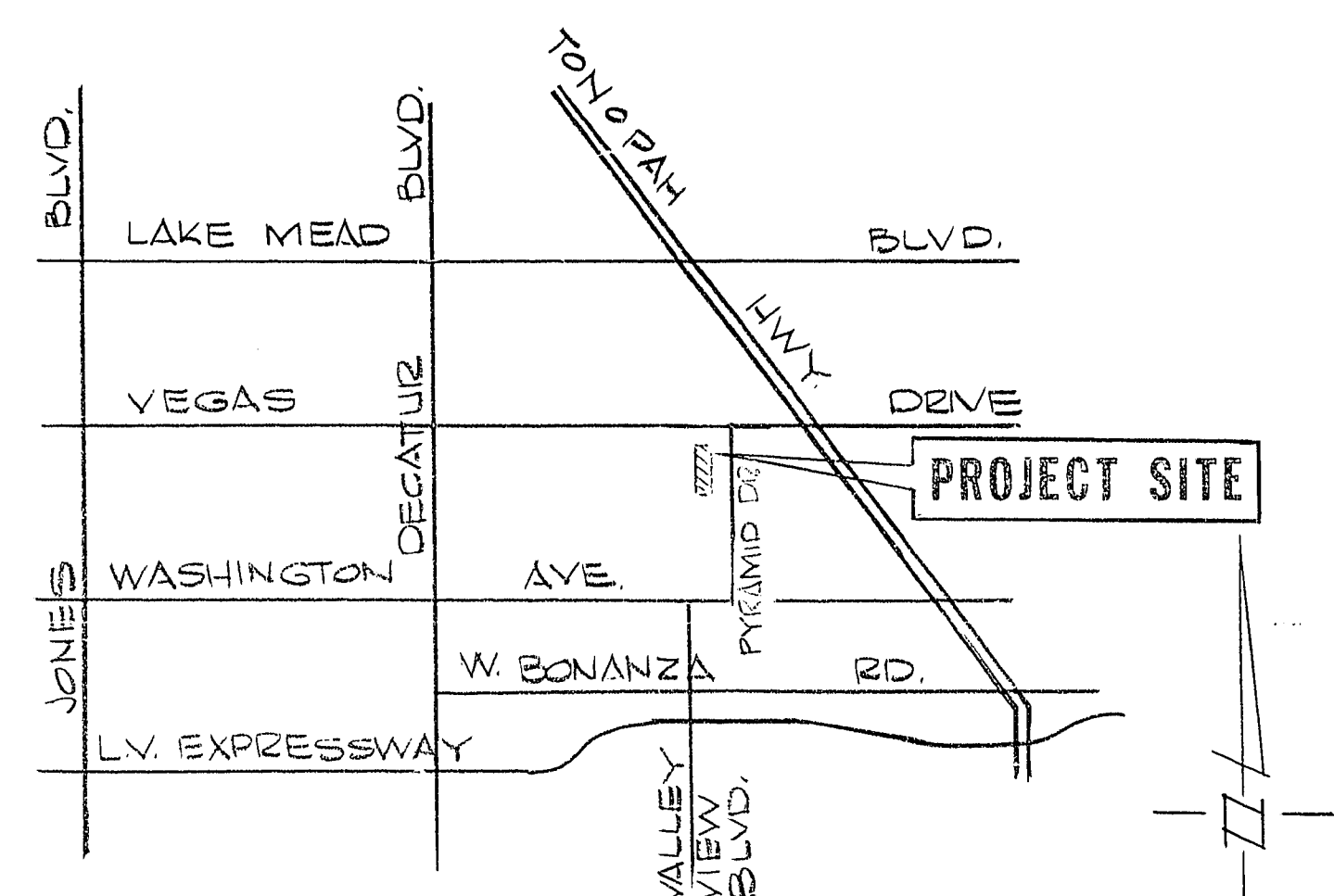
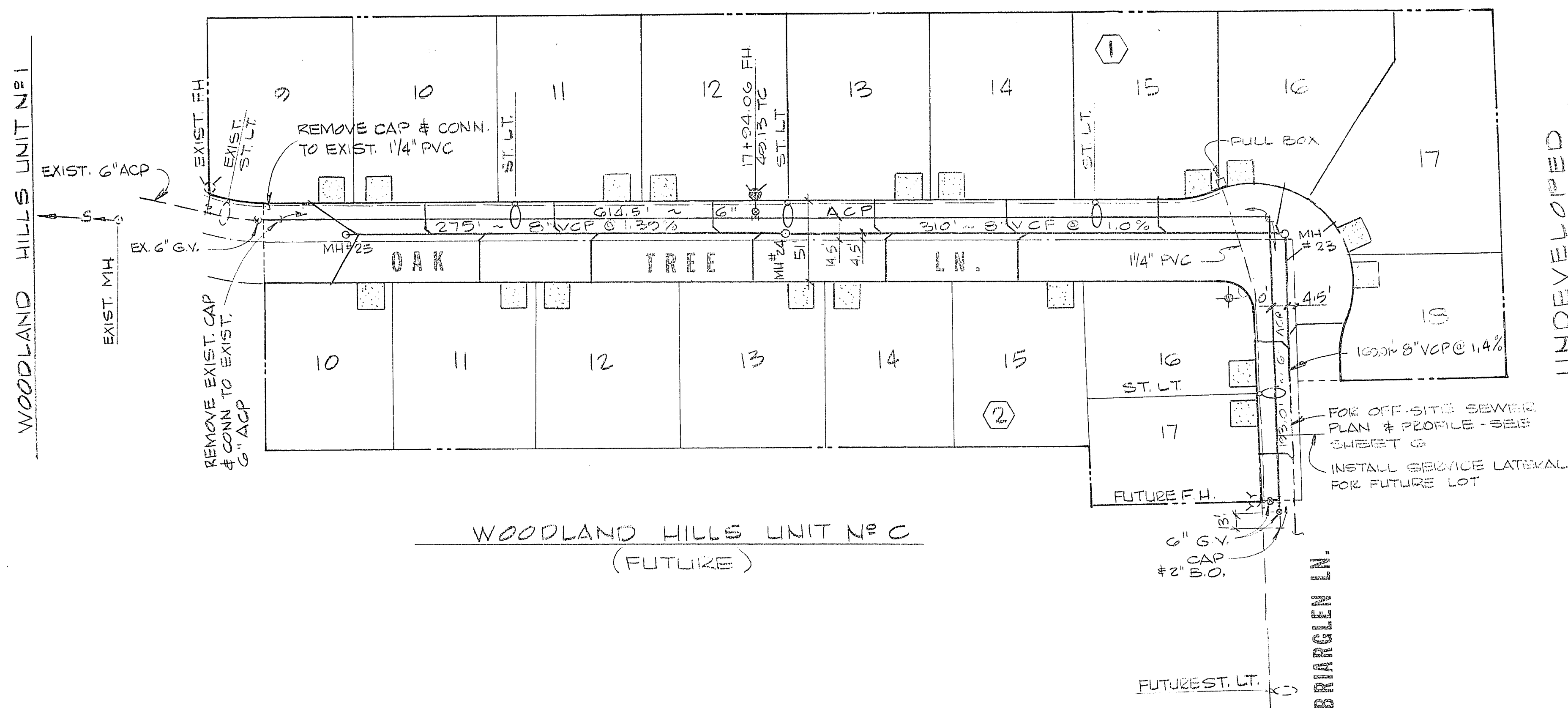


MUNICIPAL GOLF COURSE

SCALE: 1" = 50'



VICINITY MAP

LEGEND

- FIRE HYDRANT W/GATE VALVE
- SEWER LATERAL
- 250 W. LUMINAIRE W/11 GA. POLE
- 100 W. LUMINAIRE W/11 GA. POLE (SEE ST. LIGHT NOTES, SHT.)
- 1/4" PVC ST. LT. CONDUIT
- GATE VALVE
- WATER LINE
- SEWER LINE
- STREET & STOP SIGN
- STREET SIGN
- DRIVEWAY

NOTES:

- 1) STREET LIGHT SERVICE WIRE TO BE 2-#2'S & 1-#6.
- ALL FIELD WIRE TO BE 2-#4'S (THW)
- 2) INSTALL SEWER MANHOLE COLLAR PER. STD. DWG.

APPROVALS:

*William Harwin* 7/19/78  
LAS VEGAS CITY ENGINEER DATE

*Robert A. Walker* 7-18-78  
CITY OF LAS VEGAS FIELD ENGINEER DATE

*Joseph J. ...* 7-14-78  
CITY OF LAS VEGAS ELECTRICIAN DATE

*Thomas ...* 7/18/78  
CITY OF LAS VEGAS ELECTRICAL COORDINATOR DATE

*...* 7-12-78  
CITY OF LAS VEGAS SANITATION SUPT. DATE

*Michael B. ...* 7-12-78  
NEVADA POWER COMPANY DATE

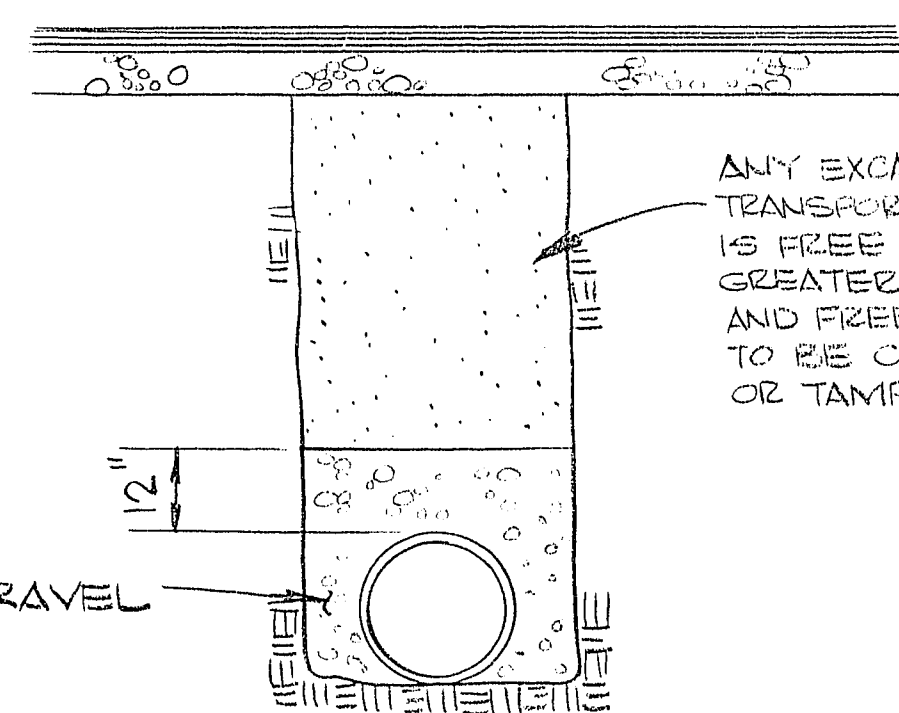
*W. P. Wells* 8/31/78  
LAS VEGAS VALLEY WATER DISTRICT DATE

*J. ...* 7-17-78  
CITY OF LAS VEGAS FIRE DEPARTMENT DATE

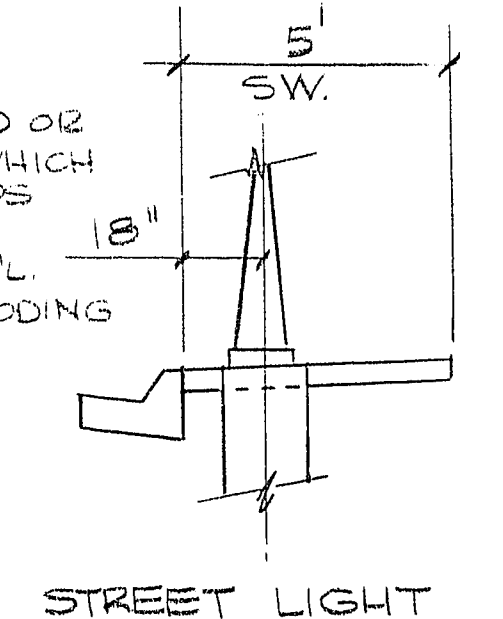
*...* 7-18-78  
QUALITY CONTROL ENGINEER DATE

ESTIMATE OF WATER QUANTITIES

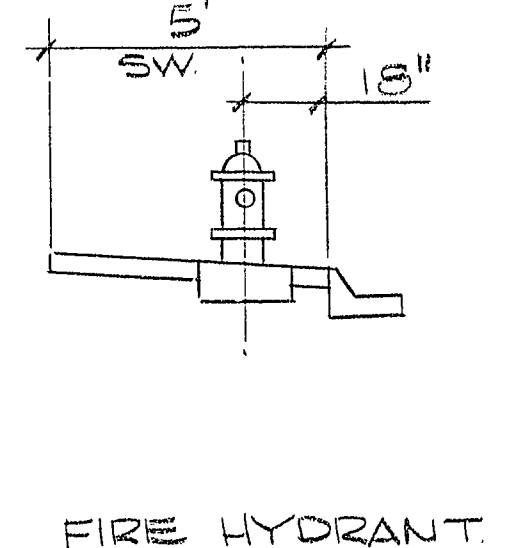
STD. FH 1/2" GV. & 6" ACP LATERAL	1 EA.
6" ACP	801.5 LF.
METER BOX	18 EA.
3/4" SERVICE	13 EA.
6" GATE VALVE	2 EA.



TYP. TRENCH SECTION



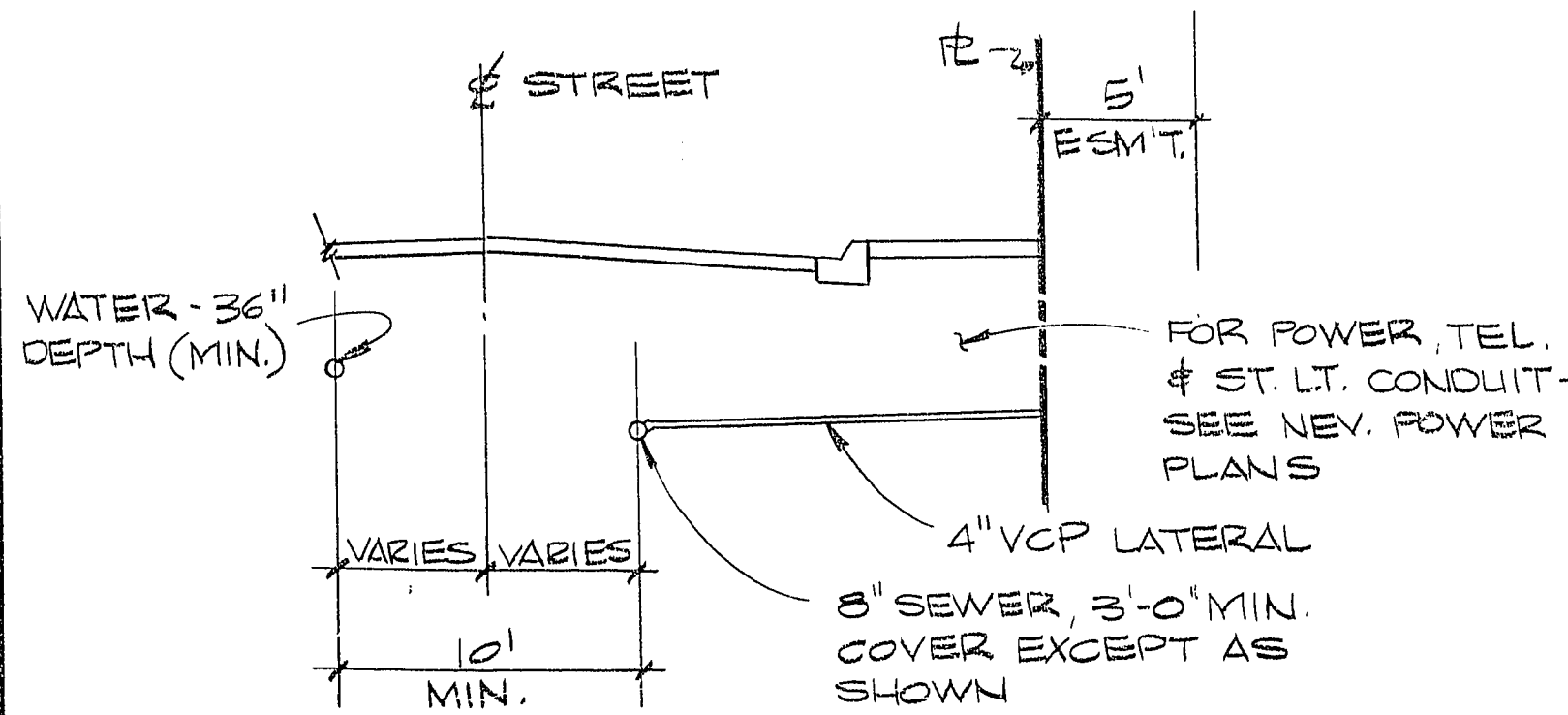
STREET LIGHT & FIRE HYDRANT LOCATION DETAIL



FIRE HYDRANT.

WATER NOTES

1. ALL WORK TO CONFORM TO LAS VEGAS VALLEY WATER DISTRICT STANDARD PLATES.
2. ALL WORK, EXCEPT AS MODIFIED HEREON OR BY NOTE NO. 1 SHALL BE DONE IN ACCORDANCE WITH THE 1978 EDITION OF UNIFORM STANDARD SPECIFICATIONS FOR PUBLIC WORKS CONSTRUCTION OFFSITE IMPROVEMENTS CLARK COUNTY AREA, 1978.
3. NOTICE TO BE GIVEN ENGINEERING DEPARTMENT OF THE LAS VEGAS VALLEY WATER DISTRICT 48 HOURS PRIOR TO ACTUAL CONSTRUCTION.
4. SERVICE SADDLES OR TAPPED COLLARS WILL BE REQUIRED ON ALL SERVICES, DOUBLE TAP COLLARS ARE NOT PERMITTED.
5. ALL LINES TO BE PRESSURE TESTED TO 200 PSI.
6. ALL VALVE BOXES SHALL HAVE CONCRETE COLLARS AT SURFACE OF PAVED AREAS.
7. DEFLECTION ANGLE SHALL NOT EXCEED 2-1/2 DEGREES PER 13 FOOT SECTION OF PIPE FOR PIPE SIZES SMALLER THAN 14 INCHES AND SHALL NOT EXCEED 2 DEGREES FOR PIPE SIZES BETWEEN 14 INCHES AND 16 INCHES.
8. ALL METERS SHALL BE LOCATED OUTSIDE OF DRIVEWAYS.
9. DETECTOR TAPE REQUIRED IN ACCORDANCE WITH STANDARD PLATE NO. 27 WHERE INDICATED AND AS FOLLOWS:
  - A. OVER ALL MAINS NOT INSTALLED AT 6 FEET FROM BACK OF CURB.
  - B. OVER ALL SERVICE LATERALS NOT INSTALLED AT RIGHT ANGLES TO MAINS.



TYP. STREET SECTION

G.C. WALLACE Consulting Engineers, Inc.  
 1100 East Sahara Ave. • Las Vegas, Nevada 89104 • 732-3330

THE CRESTMONT CORPORATION  
 WOODLAND HILLS - UNIT NO. 4  
 UTILITY PLAN

SHEET 4 OF 7 SHEETS

040