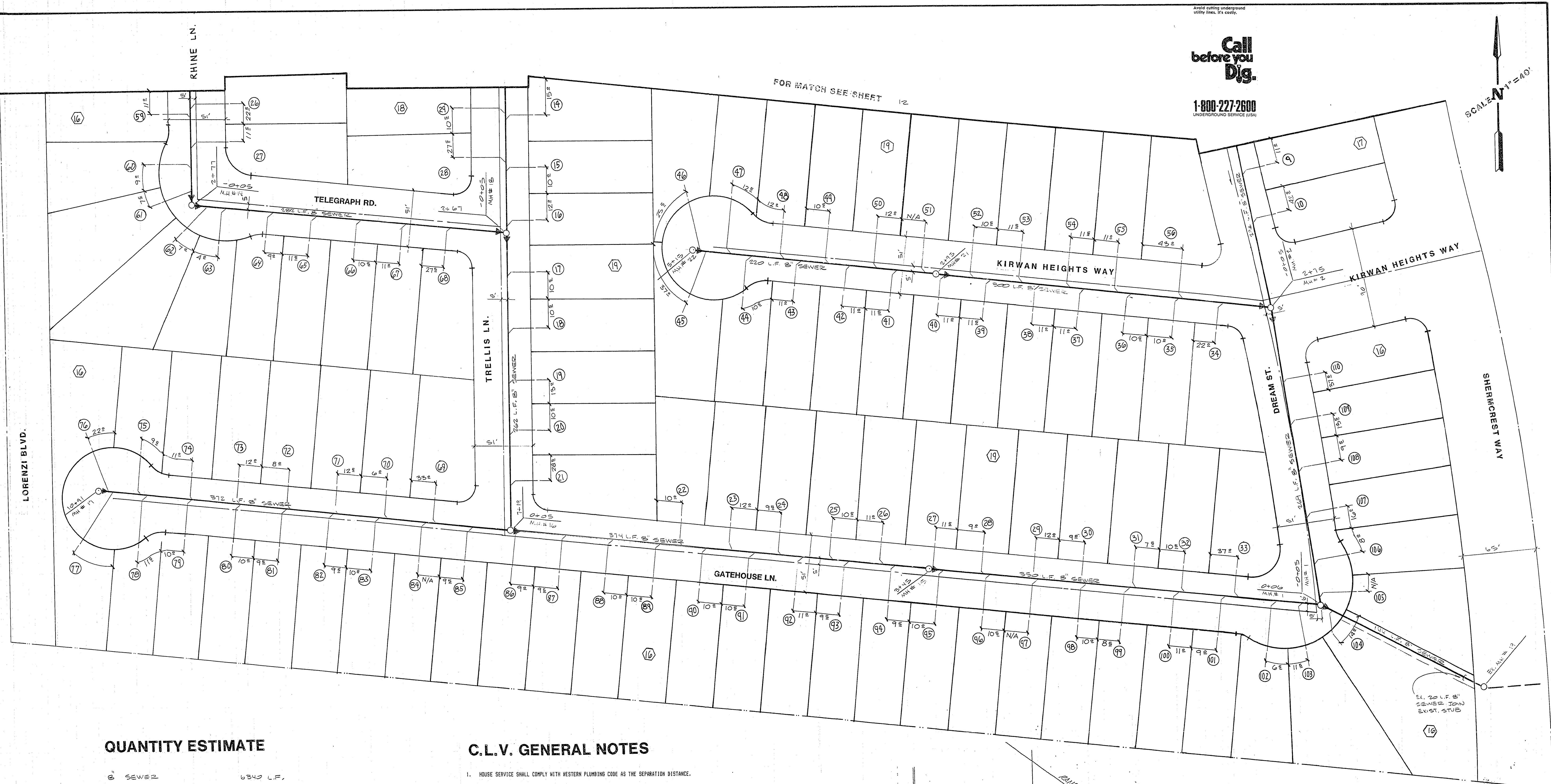
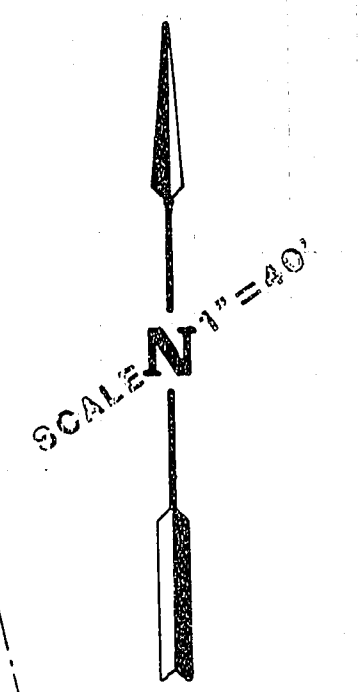


Call before you Dig.
1-800-227-2600
UNDERGROUND SERVICE USA

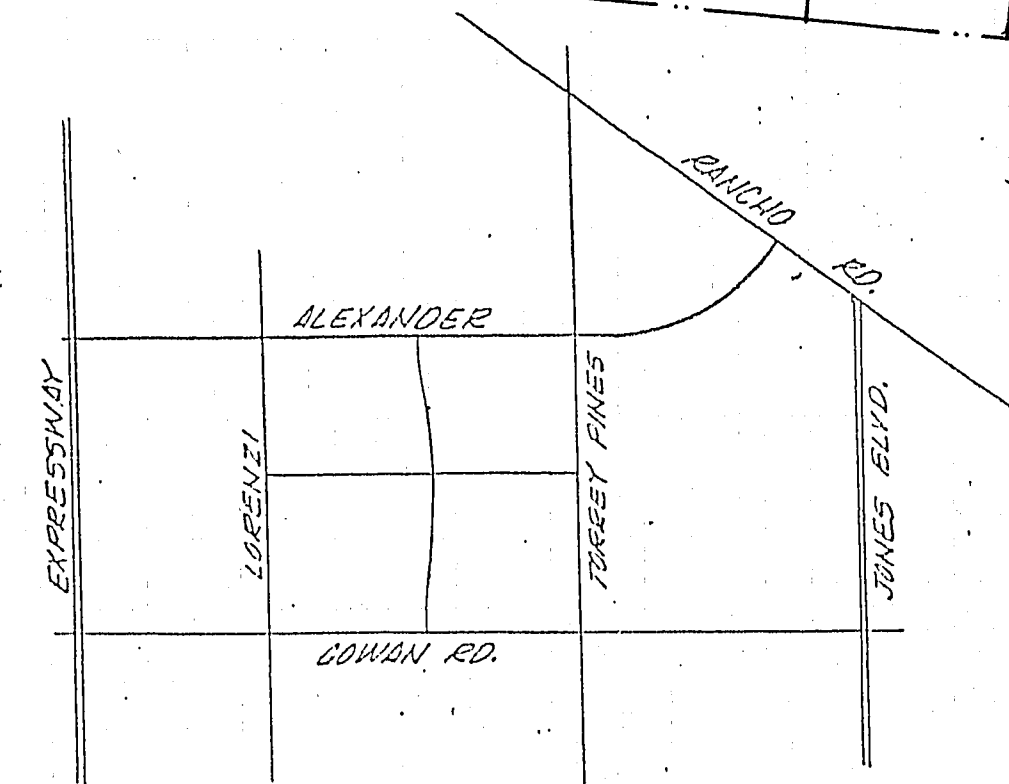


QUANTITY ESTIMATE

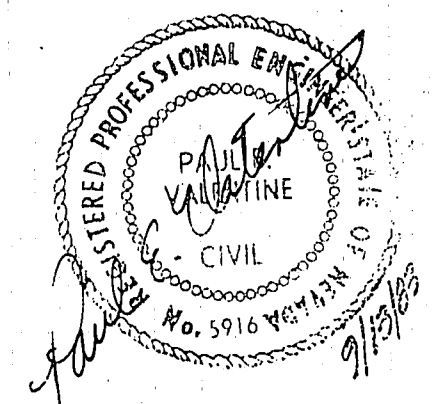
8" SEWER	6340 L.F.
MANHOLES	22 EA.
4" LATERALS	1060 L.F.

C.L.V. GENERAL NOTES

- HOUSE SERVICE SHALL COMPLY WITH WESTERN PLUMBING CODE AS THE SEPARATION DISTANCE.
- ALL HOUSES TO BE SERVED INDIVIDUALLY AS PER SECTION 313 OF THE UNIFORM PLUMBING CODE.
- CONTRACTOR SHALL FURNISH THE ENGINEER WITH AS-BUILT DRAWINGS SHOWING THE EXACT LOCATIONS OF ALL HOUSE CONNECTIONS.
- CONCRETE COLLARS TO BE CONSTRUCTED AROUND ALL MANHOLES AND WATER VALVES. (AS SHOWN ON MUTUAL STUBS)
- CHISEL S OR G WHEREVER SEWER OR GAS LINES PASS UNDER CURB.



VICINITY MAP



ENGINEERS & SURVEYORS INCORPORATED		7022 W. CHARLESTON BLVD. LAS VEGAS, NEV. 89117 PHONE: 702 - 363 - 6415	
WOODCREST UNIT #2 MASTER SEWER PLAN			
DRWN. K.L.M.	DES. P.E.V.	CHKD. D.E.V.	DATE 8/2/93
WO. NO. 85022-2	H. SCALE 1"=40'	V. SCALE	SHEET 13 OF 17

APPROVALS:

 C.L.V. CHIEF, FLOOD CONTROL & LAND DEVELOPMENT DATE 10/6/93

SUBMITTED BY
 PAUL E. VALENTINE P.E.
 NEVADA CERTIFICATE NO. 5916 DATE

As Built 3078-3348-2