

Call before you Dig.
1-800-227-2600
UNDERGROUND SERVICE U.S.A.



QUANTITY ESTIMATE

- 100 WATT HPS 21 EA.
- CONDUIT 6200 L.F.
- # 3/2 P.B. 12 EA.

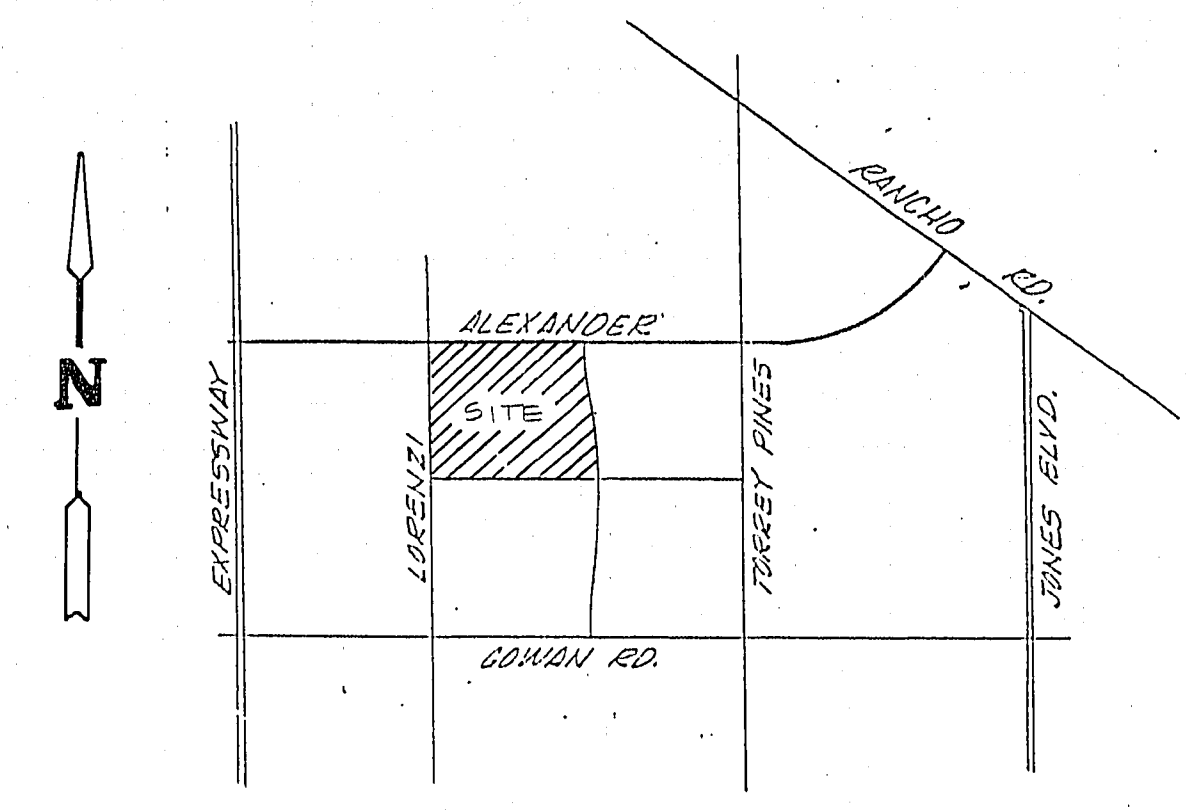
STREET LIGHT NOTES

ALL STREET LIGHTING INSTALLATIONS, EXCEPT AS NOTED ON THE STREET LIGHTING PLANS, SHALL CONFORM TO THE STANDARD DETAILS FOR STREET LIGHTING AND TRAFFIC SIGNALS DRAWINGS L-779 (INCLUDING STANDARD STREET LIGHTING NOTES) WITH REVISIONS NO LATER THAN MARCH 26, 1976. THESE INSTALLATIONS SHALL ALSO CONFORM TO THE UNIFORM STANDARD SPECIFICATIONS FOR PUBLIC WORKS CONSTRUCTION OF OFF-SITE IMPROVEMENTS, CLARK COUNTY AREA, NEVADA AND THE UNIFORM STANDARD DRAWINGS FOR PUBLIC WORKS CONSTRUCTION, CLARK COUNTY, AREA, WHERE APPLICABLE.

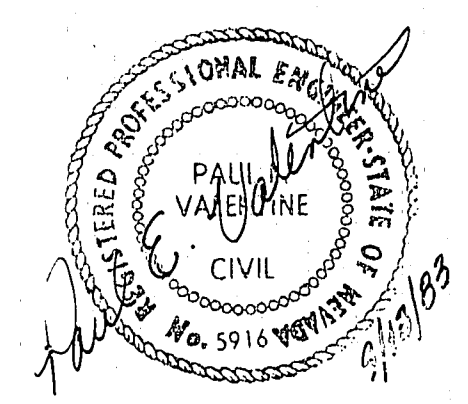
APPROVALS:

 C.L.V. CHIEF FLOOD CONTROL & LAND DEVELOPMENT 10/6/83

 DAVE BLAINE 10/7/83
 NEVADA POWER COMPANY DATE



VICINITY MAP



ENGINEERS & SURVEYORS INCORPORATED
 7022 W. CHARLESTON BLVD. LAS VEGAS, NV 89117
 PHONE: (702) 363-6415

**WOODCREST UNIT # 2
 MASTER STREET LIGHT & STREET SIGN PLAN**

DRWN. K.L.M.	DES. P.E.V.	CHKD. D.E.K.	DATE 10/1/83
WO.NO. 8203012	H.SCALE 1"=40'	V.SCALE —	SHEET 17 OF 17

6-9-46 2074-3378-2