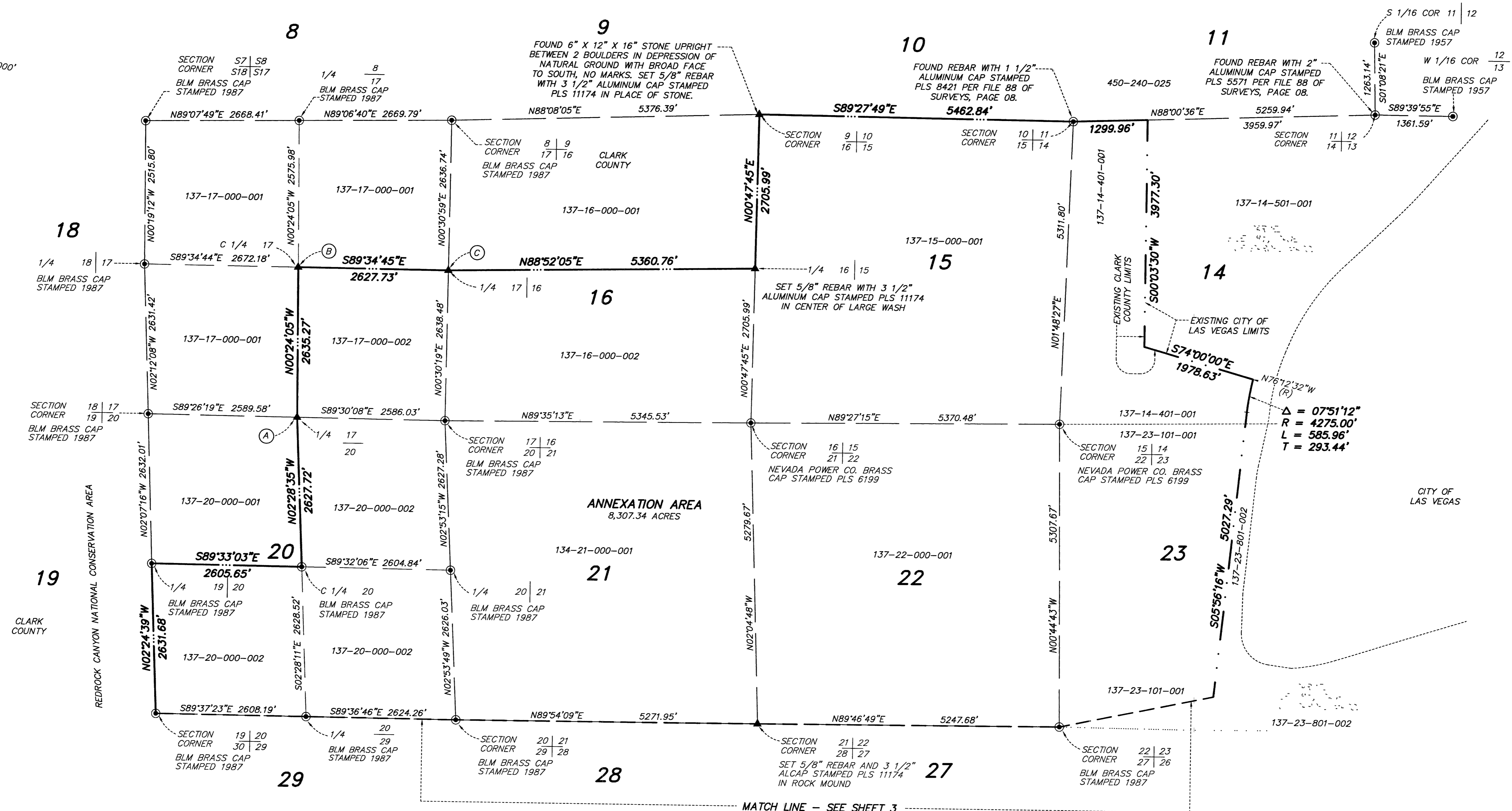


ANNEXATION MAP

AMENDED RECORD OF SURVEY

SCALE: 1" = 1000'



- LEGEND**
- FOUND MONUMENTATION AS SHOWN AND DESCRIBED
 - ▲ SET 5/8" REBAR AND ALCAP STAMPED PLS 11174
 - BLM BUREAU OF LAND MANAGEMENT
 - 137-20-104-002 ASSESSORS PARCEL NUMBER (TYPICAL)
 - (R) RADIAL BEARING OR LINE
 - LIMITS OF ANNEXATION TO CITY OF LAS VEGAS
 - - - EXISTING CITY OF LAS VEGAS LIMITS
 - - - MATCH LINE
 - SECTION LINE
 - 27 SECTION NUMBER

- MONUMENT DESCRIPTIONS:**
- (A) FOUND ROCK MOUND WITH DEPRESSED CENTER. SET 5/8" REBAR WITH 3 1/2" ALUMINUM CAP STAMPED PLS 11174 IN CENTER OF MOUND.
 - (B) FOUND EVIDENCE OF BLM MONUMENT REMOVAL. SET 5/8" REBAR WITH 3 1/2" ALUMINUM CAP STAMPED PLS 11174 IN CENTER OF HOLE IN ROCK CASE.
 - (C) FOUND EVIDENCE OF BLM MONUMENT REMOVAL. SET 5/8" REBAR WITH 3 1/2" ALUMINUM CAP STAMPED PLS 11174 IN CENTER OF HOLE SURROUNDED BY ROCK MOUND.

- REFERENCE MAPS:**
- 1) BLM DEPENDENT RESURVEY - 1987
 - 2) RECORD OF SURVEY FILE 68, PAGE 20
 - 3) RECORD OF SURVEY FILE 80, PAGE 75
 - 4) RECORD OF SURVEY FILE 87, PAGE 73
 - 5) RECORD OF SURVEY FILE 88, PAGE 08
 - 6) PARCEL MAP FILE 84, PAGE 70
 - 7) PARCEL MAP FILE 84, PAGE 71

8247
62052.4101