

- STRIPING/SIGNAGE NOTES**
- INSTALL 100 W HPS LUMINAIRE (STANDARD ALUMINUM LUMINAIRE)
  - INSTALL STREET LIGHT FOUNDATION (STANDARD CONCRETE FOUNDATION)
  - INSTALL 1 1/4" PVC STREET LIGHT CONDUIT W/WIRES
  - INSTALL NO. 3 1/2 PULLBOX
  - INSTALL "R1-1" STOP SIGN & "D3" STREET NAME SIGN
  - INSTALL MEDIAN NOSE MARKINGS PER C.C. AREA STD. DWG. NO. 248
  - INSTALL R2-1 (25 MPH) SPEED LIMIT SIGN (18"x24")
  - INSTALL 60 AMP SERVICE POINT

**Call before you Dig.**  
 1-800-227-2600  
 UNDERGROUND SERVICE (USA)

CALL BEFORE YOU DO OVERHEAD  
 1-702-593-6111  
 NEVADA POWER ENVIRONMENT & SAFETY SERVICES DEPARTMENT

**STREET LIGHT QUANTITY ESTIMATE (PRIVATE)**

100W HPS LUMINAIRE	1 EA
NO. 3-1/2 PULL BOX	3 EA
1-1/4" PVC CONDUIT W/ WIRES	960 LF
60 AMP SERVICE POINT	5 EA
<b>STREET SIGNS</b>	
R1-1 (STOP SIGN) & D3 (STREET NAME SIGN) (BROWN BACKGROUND)	9 EA
R2-1 (25 MPH SPEED LIMIT SIGN)	12 EA

- LEGEND**
- EXISTING 2" CURB
  - PROPOSED ROLL CURB
  - EXISTING CURB
  - EXISTING EDGE OF PAVEMENT
  - BOUNDARY/ROW LINE
  - PROPERTY LINE
  - CENTERLINE
  - 1 1/4" STREET LIGHT CONDUIT W/WIRES
- OWNER/DEVELOPER**  
 CRESTDALE ASSOCIATES, LTD  
 1063 LAS PALMAS ENTRADA AVE.  
 HENDERSON, NEVADA 89012
- BENCHMARK**  
 CITY OF LAS VEGAS BENCHMARK #00LV00 32NWH6  
 RIVET & PLATE IN TOP OF CURB @ NW CORNER OF ALTA & WEST EXIT TO SUNCOAST RESORT PARKING LOT.  
 METERS = 844.0507  
 U.S. SURVEY FEET = 2769.19  
 NAVD 88, DATUM
- BASIS OF BEARING**  
 THE BASIS OF BEARING FOR THIS PROJECT IS THE SOUTH LINE OF THE SOUTHEAST QUARTER OF SECTION 31, TOWNSHIP 20 SOUTH, RANGE 60 EAST, M.D.B.M. WHICH BEARS NORTH 89°40'03" EAST AS SHOWN ON FILE 91, PAGE 27 OF PARCEL MAPS RECORDED IN THE COUNTY RECORDERS OFFICE OF CLARK COUNTY, NEVADA.

**STREETLIGHT CIRCUIT CAPACITY VERIFICATION**  
 CIRCUIT "A"

NEW SERVICE POINT CAPACITY = 60 AMPS\*

MAXIMUM ALLOWABLE DRAW IS 80% OF CIRCUIT CAPACITY = 48 AMPS\*

EXISTING CIRCUIT LOAD 0 AMPS\*

PROPOSED LUMINAIRE LOAD TO CIRCUIT:

32 (#) NUMBER OF 100 WATT @ 1.0 AMPS = 32 AMPS

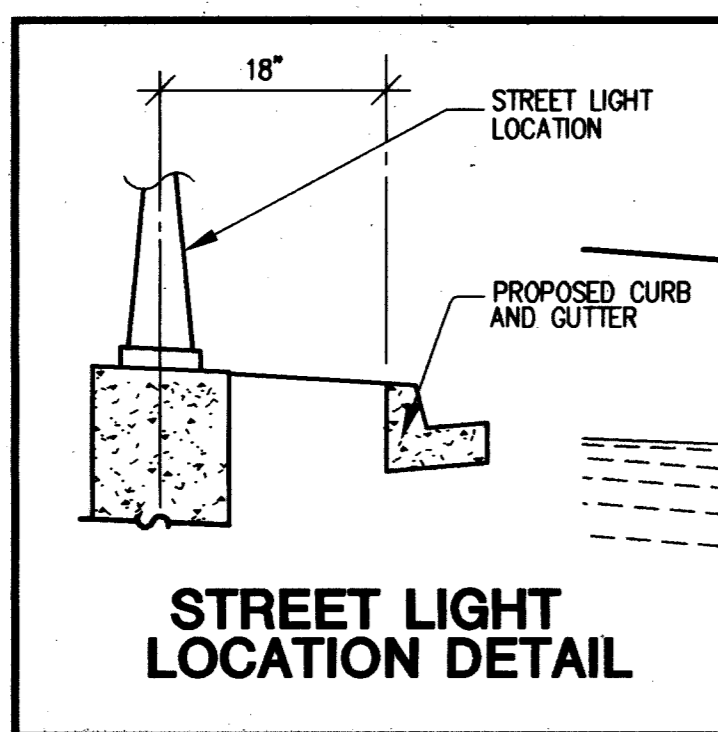
0 (#) NUMBER OF 250 WATT @ 1.5 AMPS = 0 AMPS

0 (#) NUMBER OF 400 WATT @ 3.9 AMPS = 0 AMPS

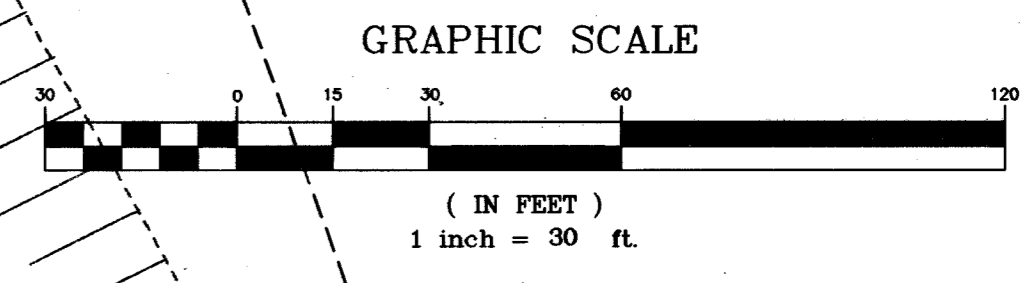
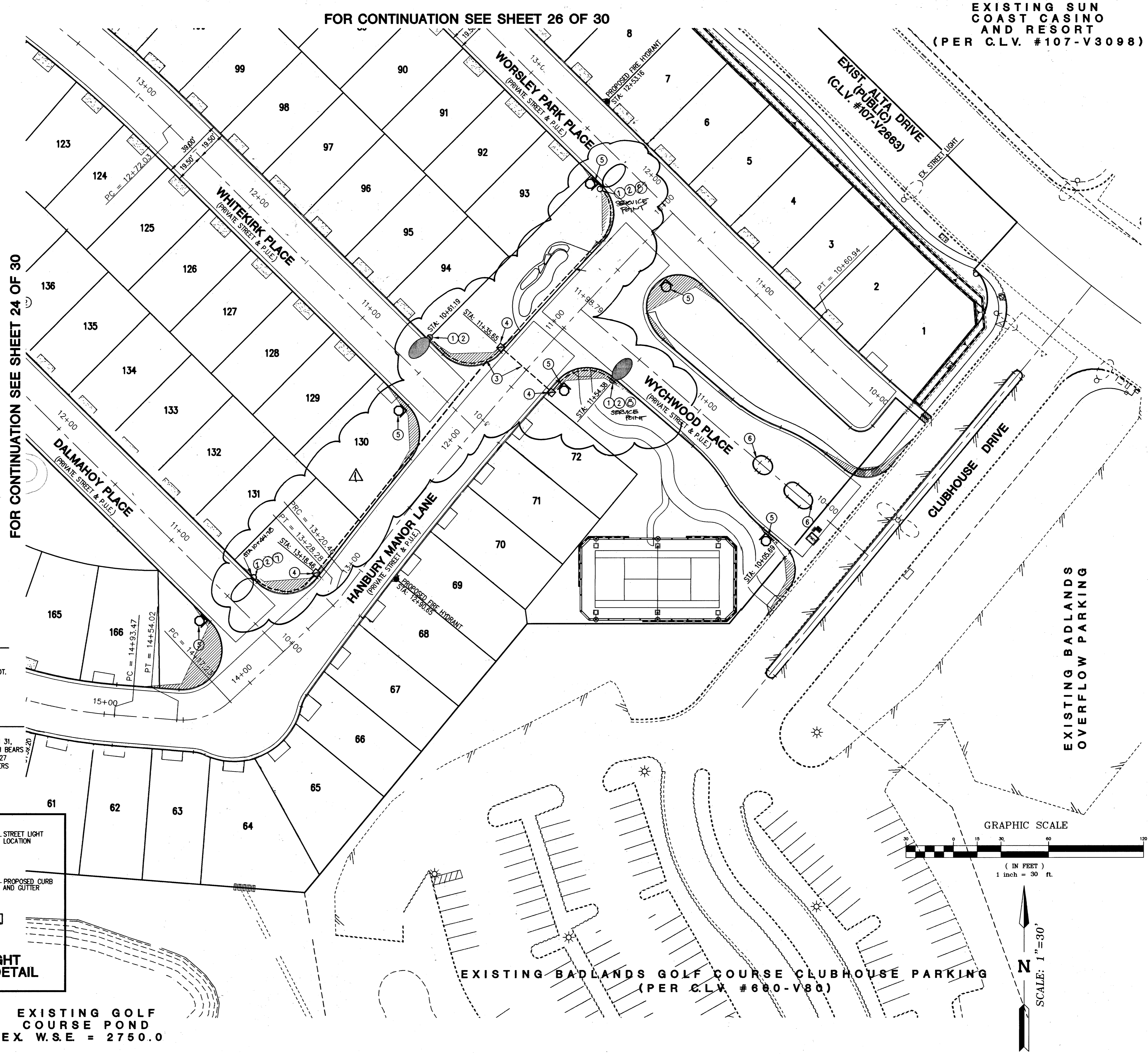
TOTAL PROPOSED LOAD = 32 AMPS

EXISTING PLUS PROPOSED LOAD = 32 AMPS

REMAINING AVAILABLE LOAD = 16 AMPS



EXISTING GOLF COURSE POND  
 EX. W.S.E. = 2750.0



SCALE: 1" = 30'

FOR CONTINUATION SEE SHEET 26 OF 30

EXISTING SUN COAST CASINO AND RESORT (PER C.L.V. #107-V3098)

EXIST. ALTA DRIVE (C.L.V. #107-V2863)

EXISTING BADLANDS OVERFLOW PARKING

EXISTING BADLANDS GOLF COURSE CLUBHOUSE PARKING (PER C.L.V. #660-V80)

CRESTDALE ASSOCIATES, LTD  
 1063 LAS PALMAS ENTRADA AVE.  
 HENDERSON, NEVADA 89012

DESIGNING FOR THE FUTURE  
 PLANNERS • CONSULTING ENGINEERS • SURVEYORS  
 1008 WINNEY HANCOY DRIVE • HENDERSON, NEVADA 89014 • (702) 248-6415

**STREETLIGHTING AND SIGNAGE PLAN (3)**

**WINDSOR AT QUEENSRIDGE**

DRAWN BY: BLOOM 02/03  
 DESIGNED BY: BLOOM 02/03  
 CHECKED BY: TRUDI 02/03  
 PROJECT NO.: 088-0860  
 SCALE: 1" = 30'

SHEET SL3  
 25 OF 30 SHEETS  
 DRAWING NO. 10714763