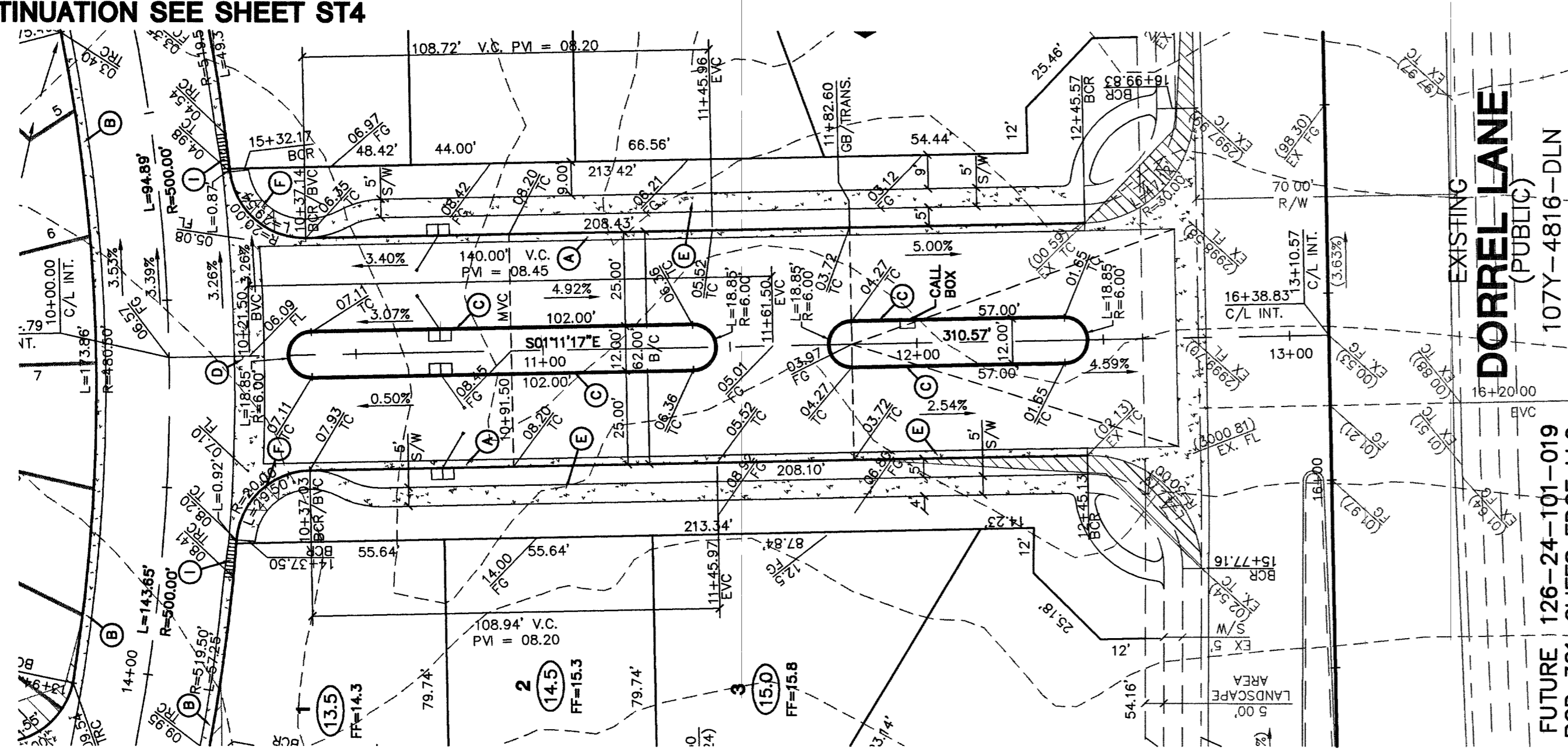


ELFSTROM AVENUE  
FOR CONTINUATION SEE SHEET ST4



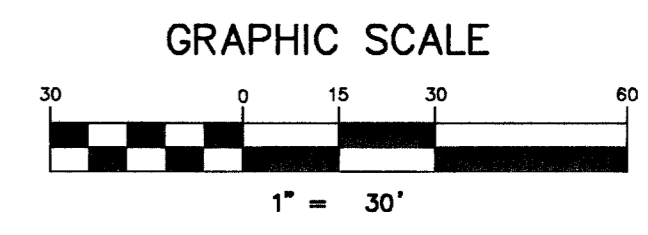
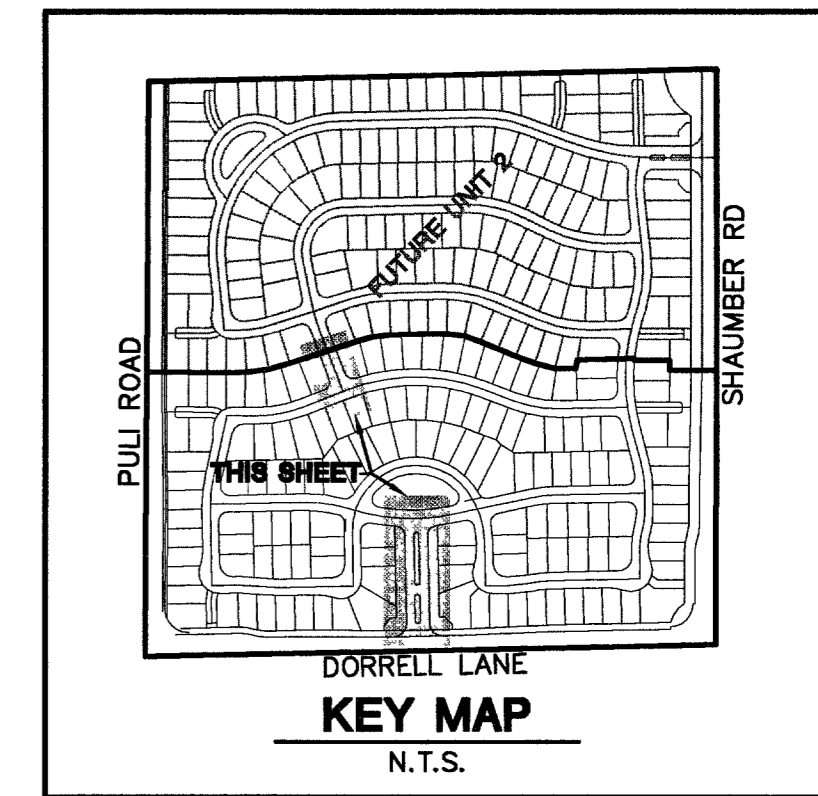
ELFSTROM AVENUE  
FOR CONTINUATION SEE SHEET ST3

WINDIMERE PARK STREET  
(PRIVATE)

DRAKE RIDGE AVENUE  
FOR CONTINUATION SEE SHEET ST2

DRAKE RIDGE AVENUE  
FOR CONTINUATION SEE SHEET ST1

YORK CREST DRIVE  
(PRIVATE)



PROFILE SCALES:  
HORZ. = 1"=30'  
VERT. = 1"=3'

**PROJECT BENCHMARK**  
DATUM: NORTH AMERICAN VERTICAL DATUM OF 1988 (NAVD88)  
CITY OF LAS VEGAS BENCHMARK: BLV99-1335S  
NAVD88 ELEVATION: 859.506 METERS (2853.03 FEET)  
RIVET AND PLATE IN CONCRETE CYLINDER NW CORNER OF HUALAPAI AND ELKHORN  
NOTE: WHEN THE SURVEYING FOR THIS PROJECT BEGAN, THE ABOVE REFERENCED BENCHMARK BLV99-1335S WAS NOT PUBLISHED. THE BASIS FOR THE DATUM FOR THIS PROJECT IS SHOWN ON RECORD OF SURVEY FILE 124 PAGE 94, CLARK COUNTY BENCHMARK 1000-6N6, WHICH AT THE TIME OF THE ORIGINAL SURVEY (PRIOR TO THE CURRENT 2003 COUNTY BENCHMARK PUBLISHING) HAD AN ELEVATION OF 2584.61 FEET TO CONVERT THE CURRENT CITY OF LAS VEGAS BENCHMARK BLV99-1335S TO MATCH THE ORIGINAL PROJECT DATUM, 0.34' NEEDS TO BE ADDED TO THE ELEVATION OF 2853.03 FEET.

**BASIS OF BEARINGS**  
THE BASIS OF BEARINGS FOR THIS PROJECT IS NORTH 00°08'16" EAST BEING THE EAST LINE OF THE NORTHWEST QUARTER (NE 1/4) OF THE SECTION 24, TOWNSHIP 19 SOUTH, RANGE 59 EAST, M.D.M. CLARK COUNTY, NEVADA, AS SHOWN ON A RECORD OF SURVEY ON FILE IN THE CLARK COUNTY, NEVADA, RECORDER'S OFFICE IN FILE 123 AT PAGE 32.

**NOTE:**  
ALL DRAINAGE EASEMENTS MUST BE COMMON LOTS & PUBLIC DRAINAGE EASEMENTS TO BE PRIVATELY MAINTAINED BY H.O.A.

**NOTES:**  
1. ALL PRIVATE STREETS AND PRIVATE DRIVES ARE P.U.E., PUBLIC SEWER EASEMENT, & PUBLIC DRAINAGE EASEMENT TO BE PRIVATELY MAINTAINED BY H.O.A.  
2. SEE SHEET DT1 & DT2 FOR SECTIONS AND DETAILS.

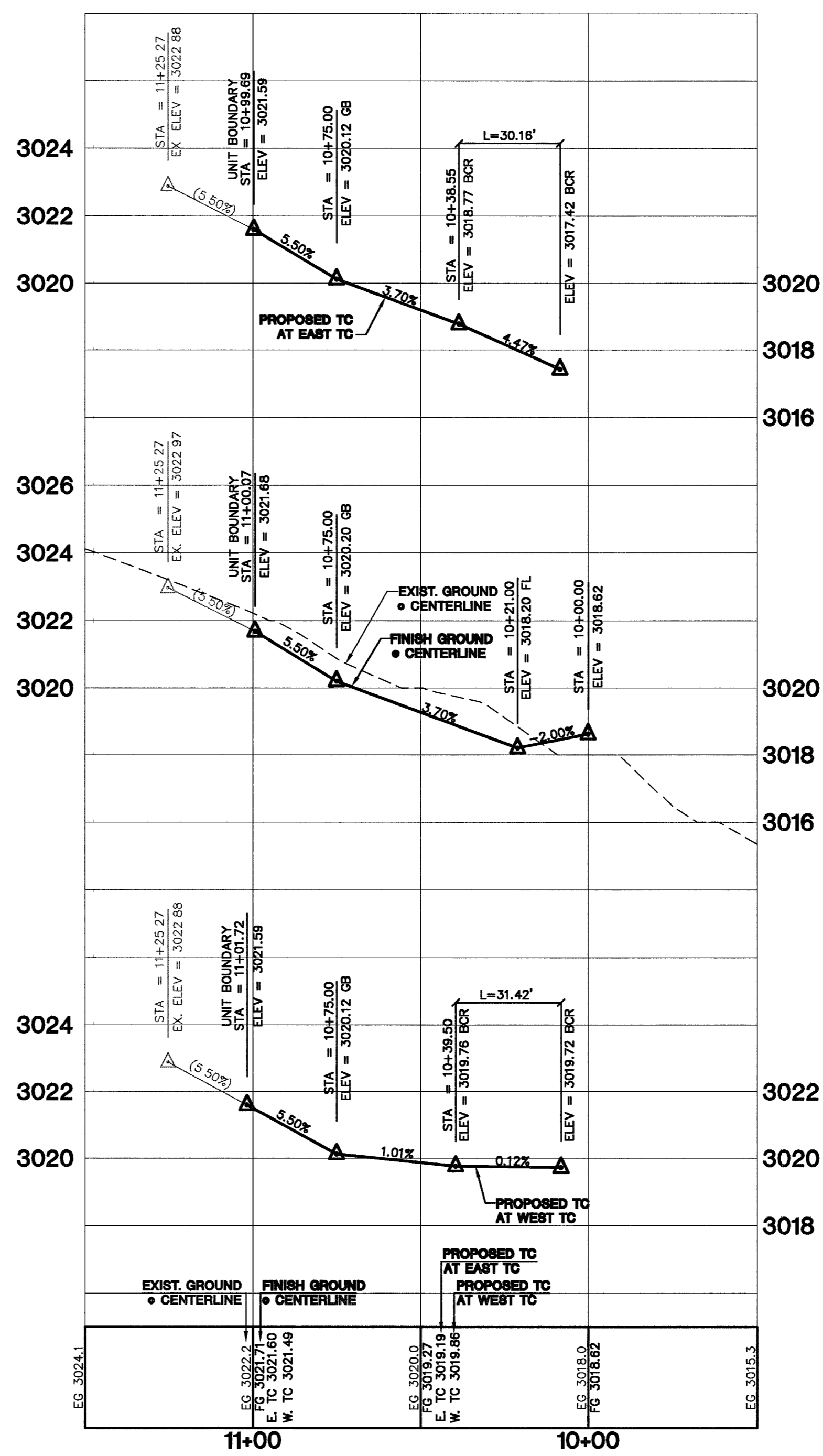
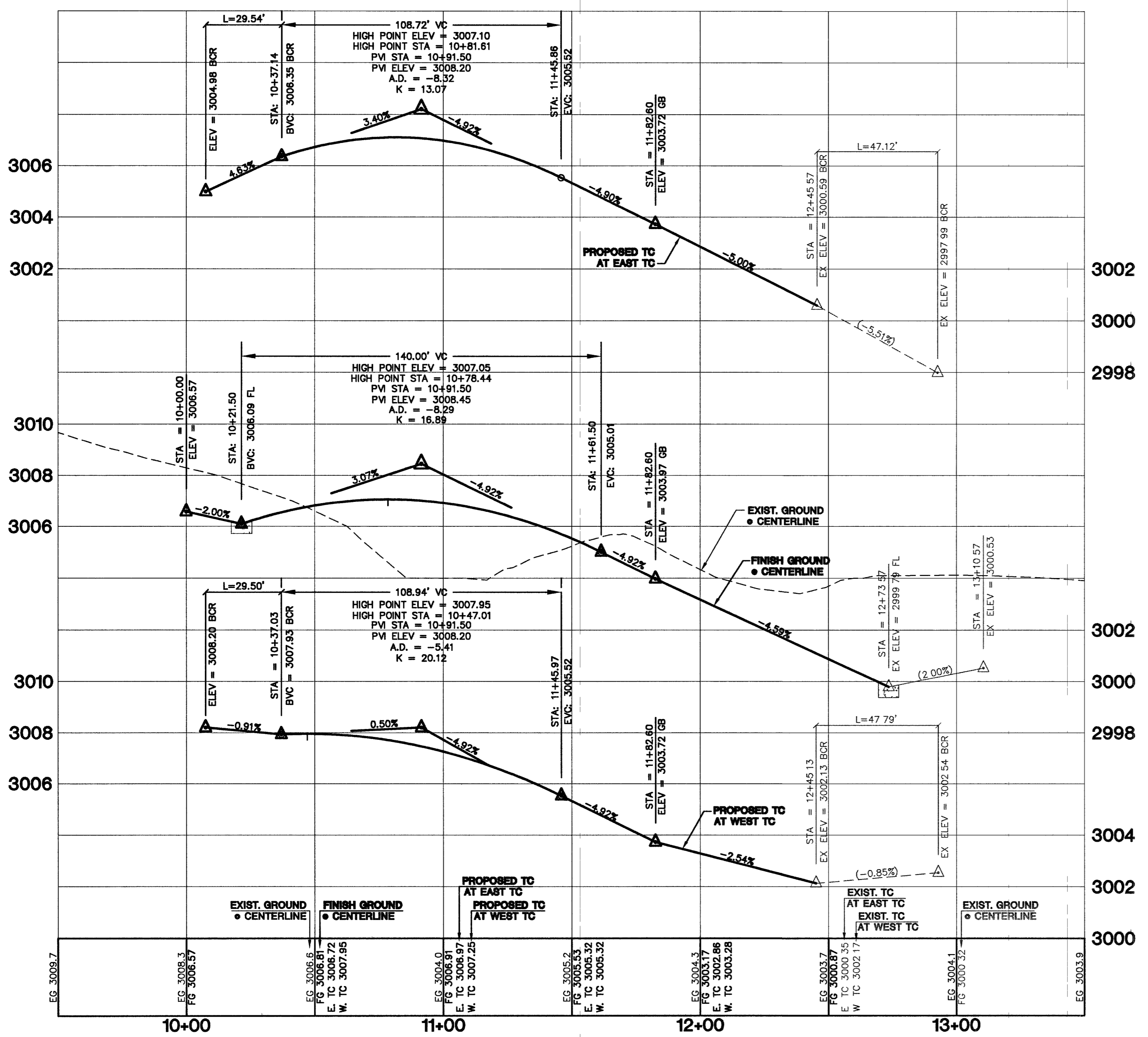
**CONTRACTOR NOTE:**  
CONTRACTOR SHALL VERIFY HORIZONTAL AND VERTICAL LOCATION OF EXISTING UTILITIES AND NOTIFY THE DESIGN ENGINEER IMMEDIATELY OF ANY DISCREPANCIES PRIOR TO CONSTRUCTION.

Avoid overhead power line contact. It's costly.  
**Call before you Overhead**  
1-702-227-2929

Avoid cutting underground utility lines. It's costly.  
**Call before you Dig**  
1-800-227-2600

AVOID HITTING UNDERGROUND TRAFFIC SIGNAL SYSTEMS AND STREET LIGHT SYSTEM CONDUITS. IT'S COSTLY. CALL BEFORE YOU DO UNDERGROUND.  
**Call before you Underground**  
1-702-455-7511  
CLARK COUNTY TRAFFIC OPERATIONS AND  
1-702-229-6611  
LAS VEGAS AREA COMPUTERIZED TRAFFIC SYSTEM

- CONSTRUCTION NOTES**
- (A) CONSTRUCT 24" "L" TYPE CURB & GUTTER PER STD. DWG. NO. 216
  - (B) CONSTRUCT 30" "ROLL" TYPE CURB & GUTTER PER STD. DWG. NO. 217A
  - (C) CONSTRUCT "A" TYPE INLAND CURB PER STD. DWG. NO. 219
  - (D) CONSTRUCT CONCRETE CROSS WALKER PER STD. DWG. NO. 228
  - (E) CONSTRUCT 5" CONCRETE SIDEWALK PER STD. DWG. NO. 234
  - (F) CONSTRUCT WHEEL CHAIR RAMP PER STD. DWG. NO. 235 CASE 1
  - (G) CONSTRUCT 2' WIDE UNDER SIDEWALK DRAIN PER STD. DWG. NO. 236
  - (H) CONSTRUCT 10' "L" TO "ROLL" CURB TRANSITION PER DETAIL ON SHEET DT1.



7	6	5	4	3	2	1	REV	DATE	BY

CITY OF LAS VEGAS

**KIMBALL HILL**  
STREET PLAN & PROFILE  
WINDIMERE PARK STREET  
YORK CREST DRIVE

**WINDIMERE**  
PROVIDENCE / CLIFFS EDGE  
POD 211 - UNIT 1

2727 SOUTH RAINBOW BOULEVARD LAS VEGAS, NEVADA 89146-5148  
PH: (702) 973-7550 FAX (702) 362-2597  
PH: (702) 468-4882

PLANNERS • LAND SURVEYORS

**vtm nevada**  
CONSULTING ENGINEERS

DRAWN BY: 10/05  
DESIGNED BY: 10/05  
CHECKED BY: 10/05  
PROJECT NO: 6400

SCALE: 1"=30' HORZ.  
1"=3' VERT.

EXPIRES 06-30-07  
10/16/05

REGISTERED PROFESSIONAL ENGINEER STATE OF NEVADA  
CHRISTOPHER GAUBER  
NO. 13956  
CIVIL ENGINEER

SHEET  
ST12  
35 OF 52 SHEETS  
DRAWING NO.  
107Y4888-1

84654