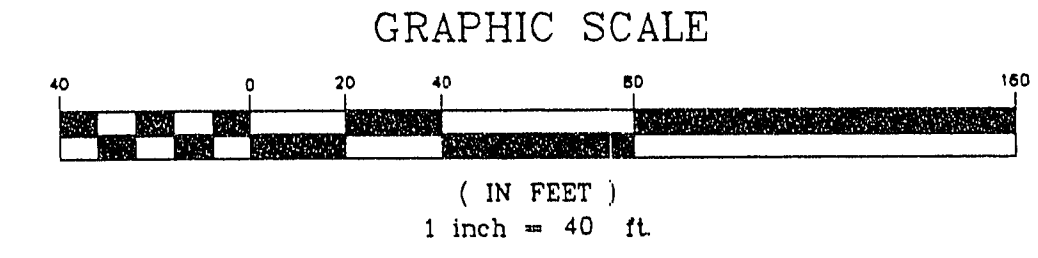
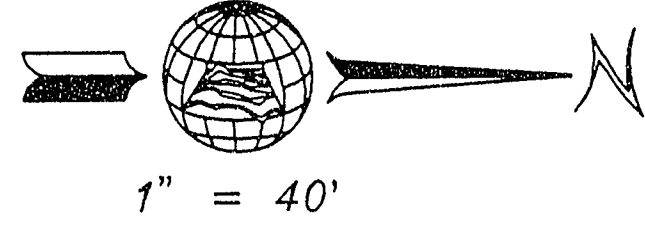
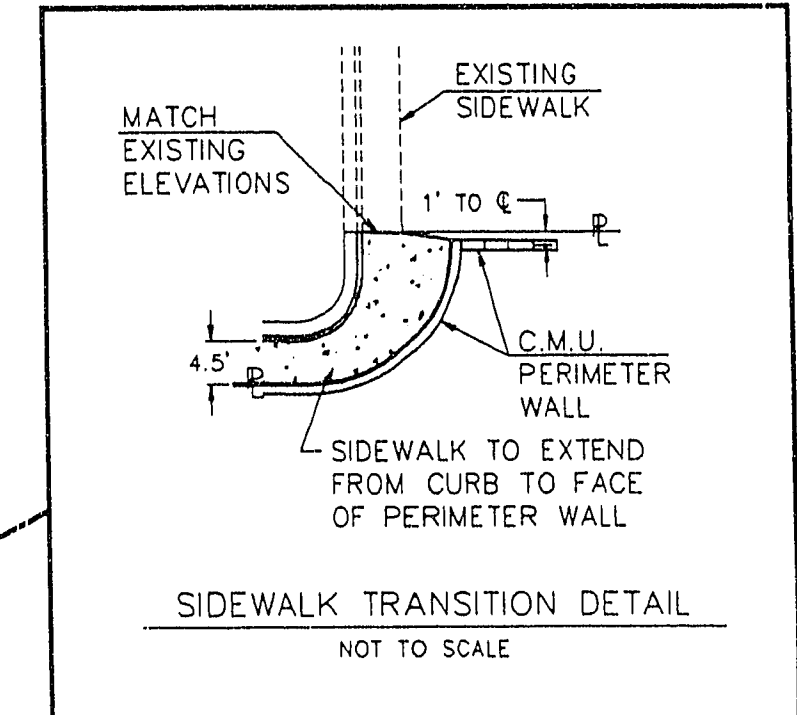
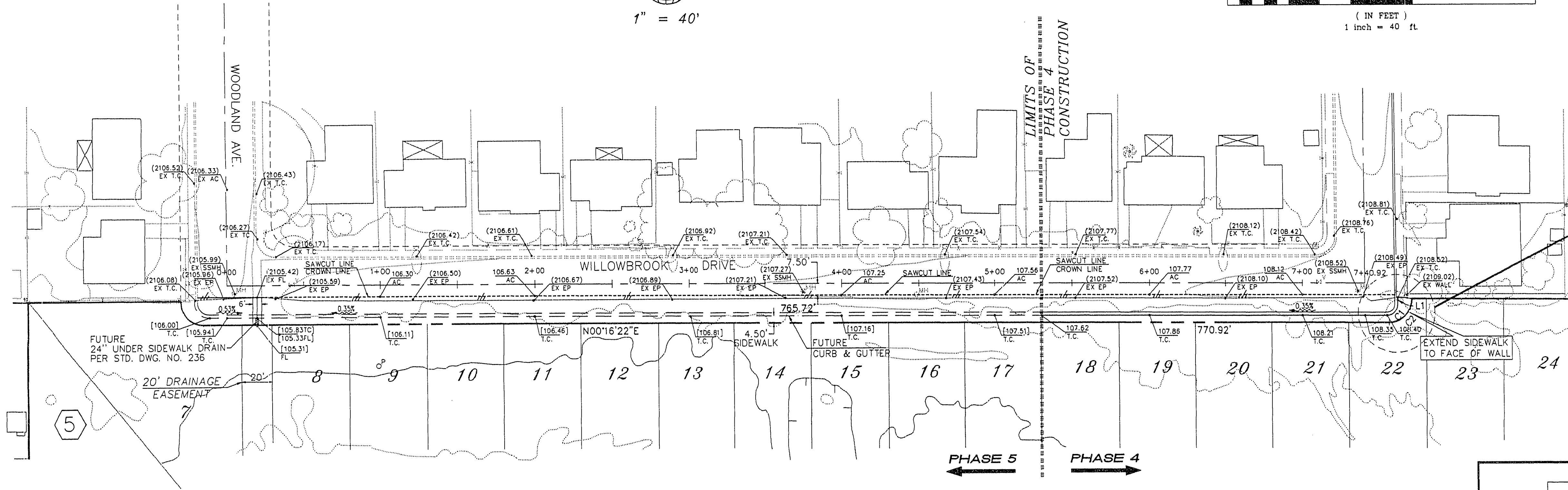


Call before you Dig  
1-800-227-2600



**BENCHMARK**  
SET DRIVE RIVET IN A 2"x2" ALUMINUM PLATE, IN DRILLED HOLE WITH EPOXY GLE, IN TOP OF CURB, NORTHEAST CORNER OF VEGAS DR. & RANCHO DR. NEAR THE PC OF RANCHO DR. ELEV: 2114.749



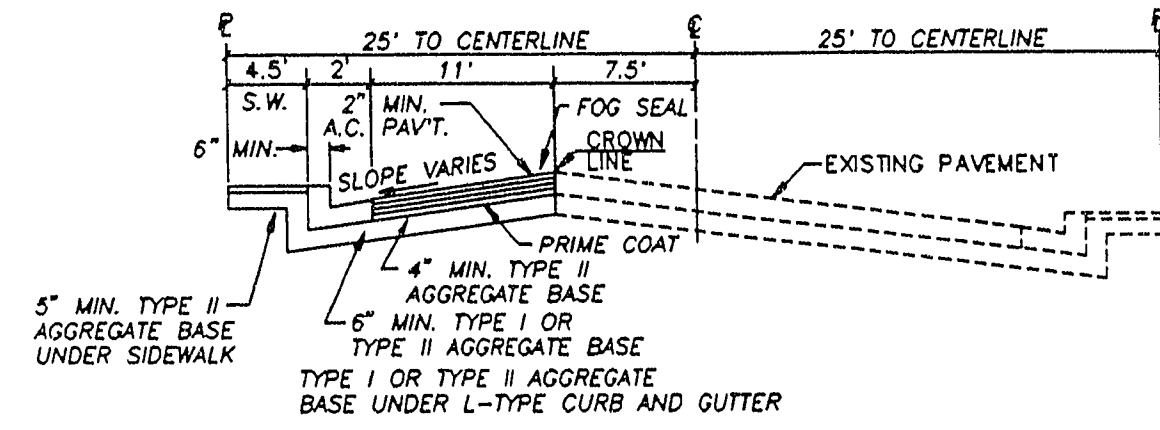
**WILLOWBROOK DRIVE - PLAN VIEW**  
HORIZONTAL SCALE: 1" = 40'

**LINE TABLE**

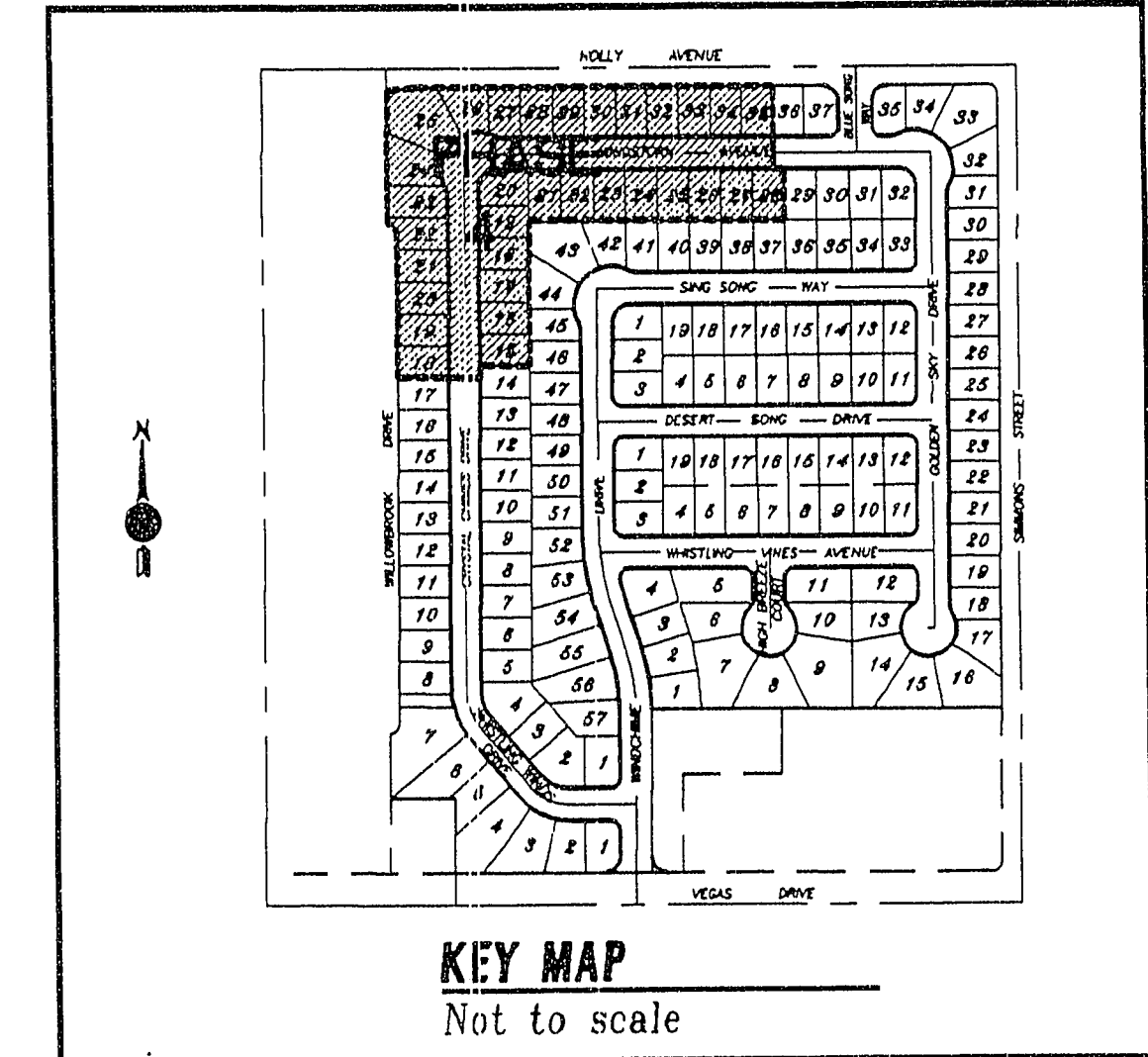
No.	BEARING	DISTANCE
L1	N89°59'46"E	4.31'

**CURVE TABLE**

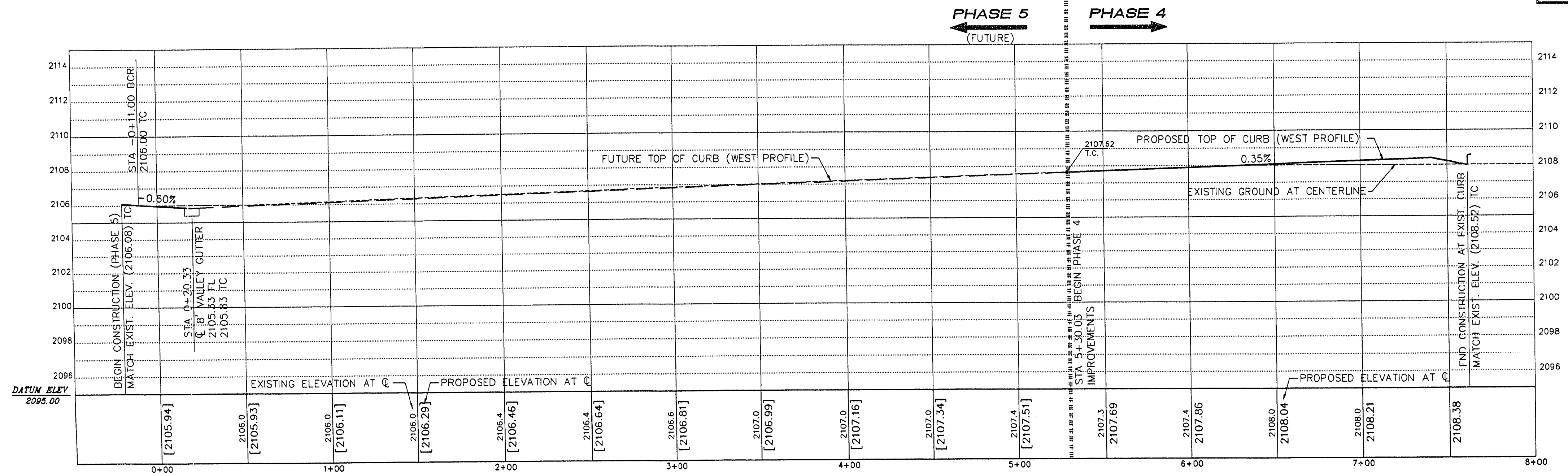
No.	RADIUS	DELTA	LENGTH	TANGENT
C1	7.00'	90°16'36"	11.03'	7.03'
C2	15.00'	90°00'00"	23.56'	15.00'



**50' R/W Street Section with OFFSET CROWN**  
NOT TO SCALE (DEVIATION FROM STANDARD)



**KEY MAP**  
Not to scale



**WILLOWBROOK DRIVE - PROFILE**  
HORIZONTAL SCALE: 1" = 40'  
VERTICAL SCALE: 1" = 4'

Date	
Appr.	
Date/Issr	
REVISIONS	
No.	
Church Engineering of Nevada, Inc.	6600 W. Charleston Blvd. Suite 140 Las Vegas, NV 89102 (702) 876-6244
Consulting Engineers Planners Surveyors	
<b>WINDCHIME</b>	
<b>PHASE 4</b>	
WILLOWBROOK DRIVE	
PLAN & PROFILE	
Drawn by	Scale
7089.401	1" = 40'
Checked by	File No.
UMB	40IMP4
Date	
JUN. 25, 1993	
Job Number	Sheet Number
7089.401	8 OF 8

