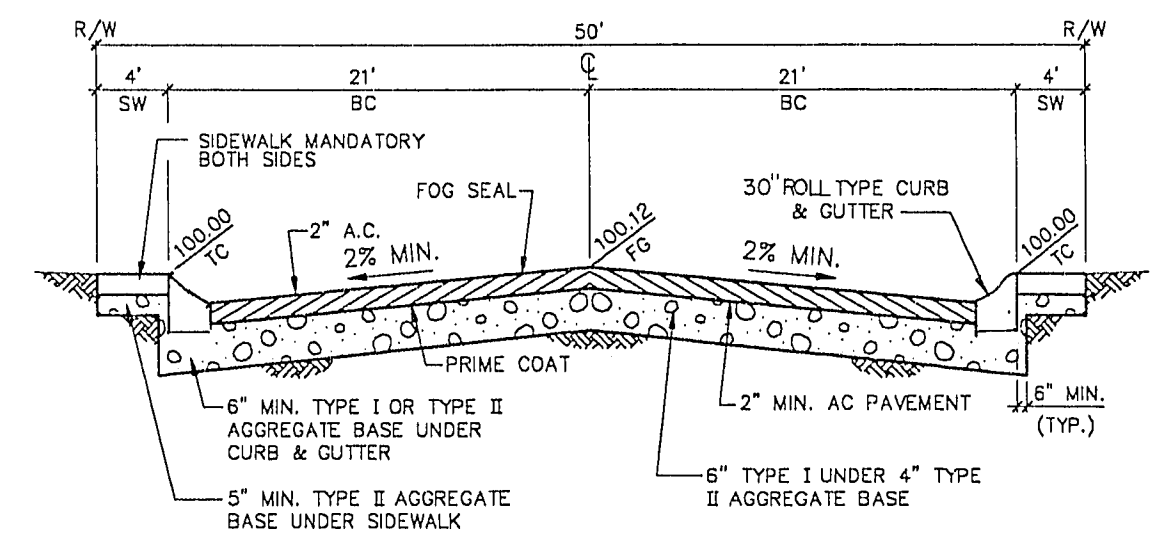


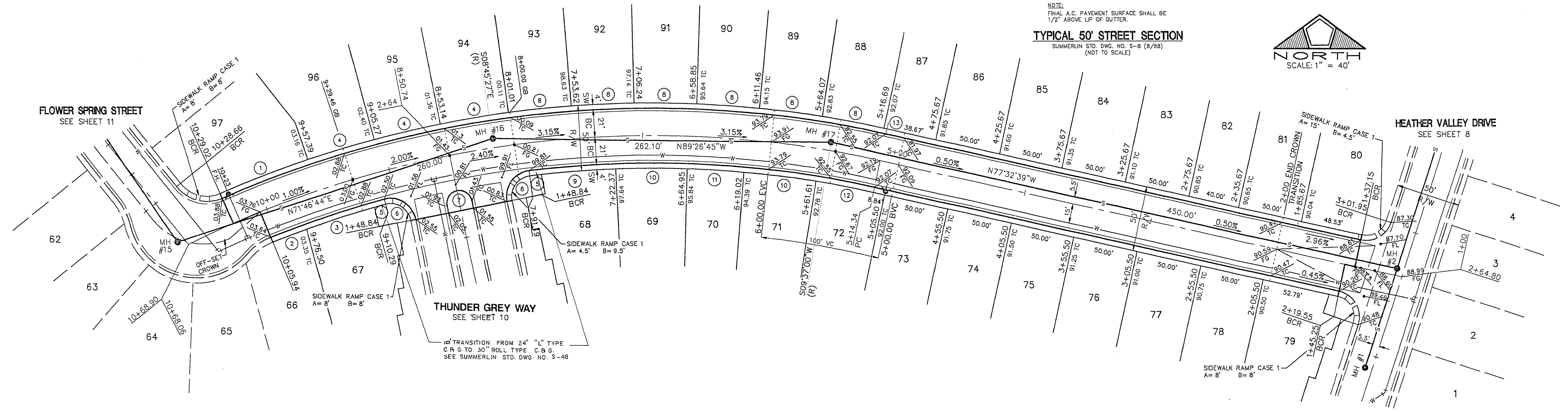
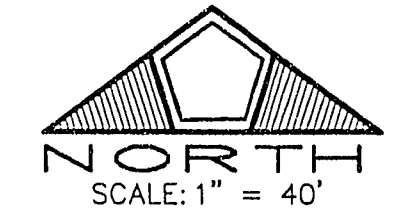
**BCR CURVE DATA**

CURVE	DELTA	RADIUS	LENGTH	TANGENT
1	05°02'31"	835.00'	73.48'	36.76'
2	02°04'20"	793.00'	28.68'	14.34'
3	04°31'04"	789.00'	55.31'	27.68'
4	03°40'09"	835.00'	53.47'	26.75'
5	00°38'36"	789.00'	8.86'	4.43'
6	04°11'50"	20.00'	32.86'	21.52'
7	180°00'00"	8.83'	30.68'	-
8	03°20'08"	835.00'	46.61'	24.31'
9	04°17'01"	789.00'	57.84'	28.93'
10	04°02'29"	793.00'	56.91'	27.98'
11	03°13'58"	793.00'	44.74'	22.38'
12	03°19'38"	793.00'	46.05'	23.03'
13	00°09'55"	835.00'	2.41'	1.20'

**PROFILE**  
 SCALE: HORIZ. 1" = 40'  
 VERT. 1" = 4'



**TYPICAL 50' STREET SECTION**  
 SUMMERLIN STD. DWG. NO. S-8 (8/89)  
 (NOT TO SCALE)



**COTTON ROSE WAY**

<p>RECOMMENDED BY: [Signature]</p> <p>DATE: 12/21/92</p> <p>DESIGNED BY: DW</p> <p>CHECKED BY: MR</p> <p>JOB NO.: 00301020</p> <p>SCALE: 1" = 40'</p>	<p>DATE: 12/21/92</p> <p>DATE: 12/21/92</p> <p>REVISION: [Signature]</p> <p>REVISION: [Signature]</p> <p>REVISION: [Signature]</p> <p>NO. DESCRIPTION</p>
<p><b>PENTACORE</b>        Engineering, Inc.        6763 West Charleston Boulevard        Las Vegas, Nevada 89102        (702) 258-0115</p>	
<p>LEWIS HOMES OF NEVADA        WILLOW TREE        COTTON ROSE WAY</p>	
<p>SHEET <b>12</b>        OF 29</p>	

1026-81  
1074-4242