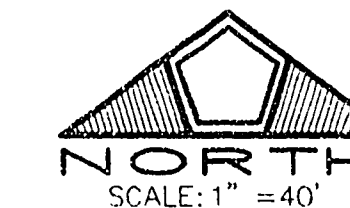


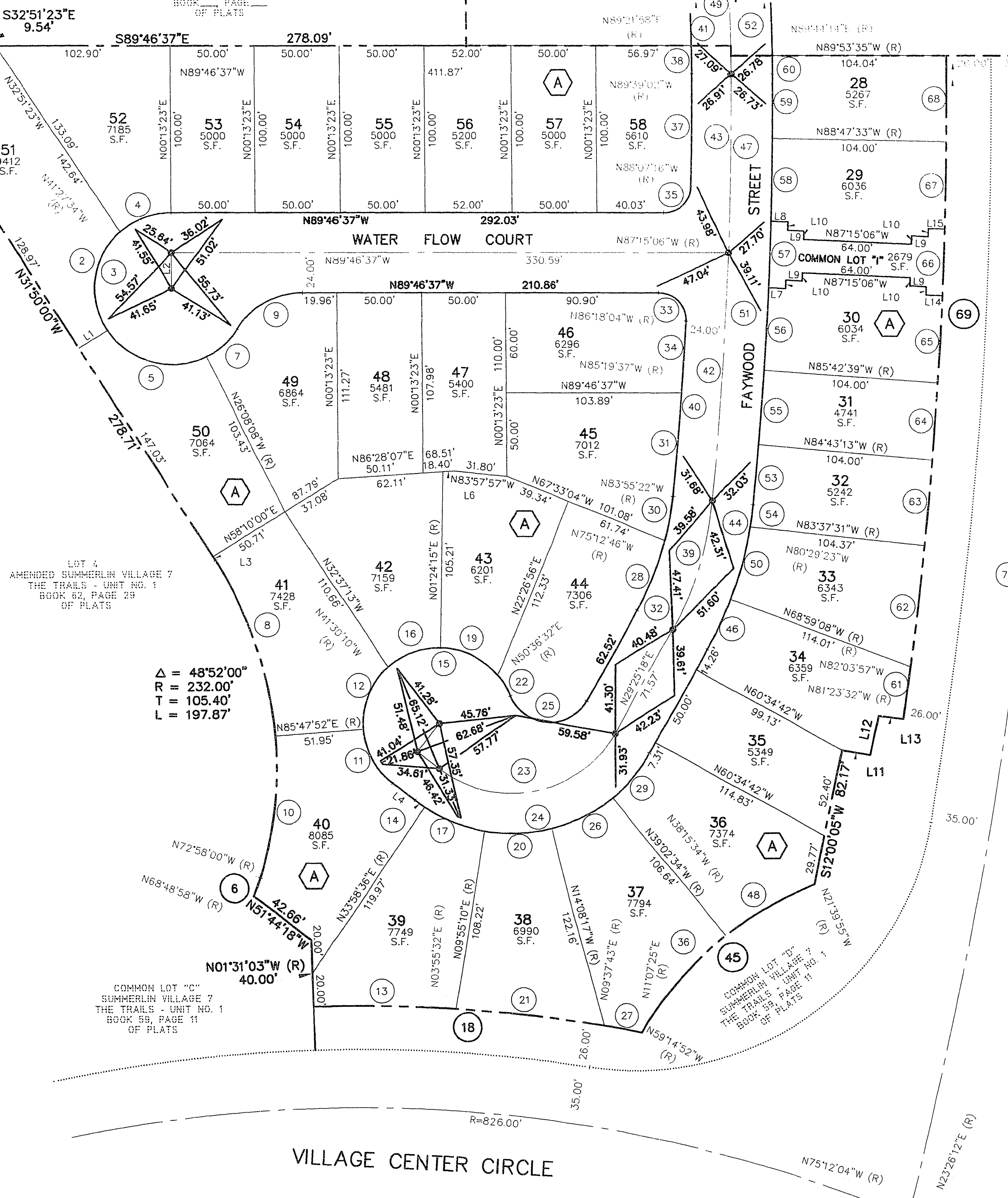
MONUMENT TIE MAP WILLOW BEND NO. 4 IN THE TRAILS AT SUMMERLIN BY LEWIS HOMES



WILLOW BEND NO. 4 IN THE TRAILS AT SUMMERLIN BY LEWIS HOMES BOOK PAGE OF PLATS
MATCH LINE - SEE SHEET 2 OF 3

LINE	BEARING	DISTANCE
L1	N58°10'00"E	20.01'
L2	N00°13'23"E (R)	21.50'
L3	N31°50'00"W	2.71'
L4	N51°44'18"W	16.55'
L5	N38°15'42"E (R)	21.50'
L6	N86°28'07"E	6.39'
L7	N86°48'36"W (R)	10.06'
L8	N87°41'35"W (R)	10.06'
L9	N87°15'06"W	10.00'
L10	N02°44'54"E	5.00'
L11	N80°20'57"W	16.92'
L12	S12°57'53"W	24.03'
L13	N82°24'43"W	14.59'
L14	N86°49'26"W (R)	9.94'
L15	N87°40'45"W (R)	9.94'

CURVE	DELTA	RADIUS	LENGTH	TANGENT
1	03°42'20"	902.00'	58.34'	29.18'
2	81°50'17"	45.50'	64.99'	39.44'
3	237°59'27"	45.50'	188.99'	---
4	41°40'57"	45.50'	33.10'	17.32'
5	82°50'17"	45.50'	65.78'	40.14'
6	04°09'02"	162.00'	11.74'	5.87'
7	31°37'56"	45.50'	25.12'	12.89'
8	27°37'52"	232.00'	111.88'	57.05'
9	57°59'27"	46.00'	46.56'	25.49'
10	21°14'09"	232.00'	85.99'	43.49'
11	47°32'10"	45.50'	37.75'	20.04'
12	52°41'58"	45.50'	41.85'	22.54'
13	05°26'35"	887.00'	84.26'	42.16'
14	04°17'06"	94.00'	7.03'	3.52'
15	210°36'59"	45.50'	167.26'	---
16	42°54'25"	45.50'	34.07'	17.88'
17	24°03'26"	94.00'	39.47'	20.03'
18	12°38'28"	887.00'	195.70'	98.25'
19	49°12'17"	45.50'	39.07'	20.83'
20	24°03'27"	94.00'	39.47'	20.03'
21	05°42'11"	887.00'	86.70'	44.18'
22	18°16'09"	45.50'	14.51'	7.32'
23	98°50'24"	70.00'	120.76'	81.73'
24	98°50'24"	94.00'	162.16'	109.75'
25	129°27'23"	25.00'	56.49'	52.96'
26	24°54'17"	94.00'	40.86'	20.76'
27	01°29'42"	887.00'	23.14'	11.57'
28	14°38'04"	176.00'	44.95'	22.60'
29	21°32'08"	94.00'	35.33'	17.88'
30	08°42'36"	176.00'	26.76'	13.40'
31	01°24'15"	2537.00'	62.18'	31.09'
32	23°20'40"	176.00'	71.71'	36.36'
33	93°28'33"	16.00'	26.10'	17.00'
34	00°58'27"	2537.00'	43.14'	21.57'
35	88°20'39"	16.00'	24.67'	15.54'
36	20°59'18"	211.59'	77.51'	39.19'
37	01°31'46"	2537.00'	67.72'	33.86'
38	00°59'00"	976.00'	16.75'	8.38'
39	23°20'40"	200.00'	81.49'	41.32'
40	02°22'42"	2537.00'	105.31'	52.66'
41	10°07'59"	976.00'	172.61'	86.53'
42	03°19'44"	2561.00'	148.79'	74.42'
43	02°23'57"	2561.00'	107.24'	53.83'
44	23°20'40"	224.00'	91.27'	46.27'
45	37°34'57"	211.59'	138.79'	72.00'
46	08°24'26"	224.00'	32.87'	16.46'
47	05°43'41"	2561.00'	256.03'	128.12'
48	16°35'39"	211.59'	61.28'	30.86'
49	10°07'59"	1000.00'	176.86'	88.66'
50	11°30'15"	2561.00'	224.00'	113.24'
51	05°43'40"	2585.00'	258.42'	129.32'
52	10°07'59"	1024.00'	181.10'	90.79'
53	00°47'51"	2585.00'	35.98'	17.99'
54	03°25'59"	224.00'	13.42'	6.71'
55	00°59'26"	2585.00'	44.69'	22.35'
56	01°05'57"	2585.00'	49.59'	24.80'
57	00°59'26"	2585.00'	38.84'	19.24'
58	01°05'58"	2585.00'	49.60'	24.80'
59	00°51'29"	2585.00'	38.71'	19.36'
60	00°36'44"	1024.00'	10.94'	5.47'
61	00°40'25"	2689.00'	31.61'	15.81'
62	01°33'34"	2689.00'	73.19'	36.60'
63	01°05'42"	2689.00'	51.39'	25.70'
64	00°59'26"	2689.00'	48.49'	23.24'
65	01°06'47"	2689.00'	52.24'	26.12'
66	00°51'19"	2689.00'	40.14'	20.07'
67	01°06'48"	2689.00'	52.25'	26.13'
68	01°06'02"	2689.00'	51.65'	25.83'
69	11°36'28"	2689.00'	544.78'	273.32'
70	17°47'56"	2750.00'	854.29'	430.61'



- ### LEGEND
- PROPERTY LINE
 - STREET CENTERLINE
 - ⬡ BLOCK NUMBER
 - LOT NUMBER
 - TOTAL LOTS IN SUBDIVISION = 44
 - RESIDENTIAL LOTS = 43
 - COMMON AREA LOTS = 1
 - SET TYPE III MONUMENT P.L.S. 4541 AND TYPE IV MONUMENTS IN TOP OF CURB (UNLESS OTHERWISE NOTED)
 - FOUND TYPE III MONUMENT P.L.S. 4541 PER BOOK ___ PAGE ___ OF PLATS
 - FOUND ALUMINUM CAP P.L.S. 7635 PER FILE 62, PAGE 30 OF PARCEL MAPS

- ### NOTES:
1. ALL REAR PROPERTY CORNERS ARE REBAR AND ALUMINUM CAP P.L.S. 4541 UNLESS WALL IS BUILT THEN NAIL AND BRASS TAG P.L.S. 4541 SET IN WALL DENOTES SIDE PROPERTY LINE. SET SAWCUT IN THE TOP OF CURB ON THE SIDE PROPERTY LINES EXTENDED.
 2. ALL STREETS ARE PUBLIC STREETS HEREBY DEDICATED.
 3. COMMUNITY SEWERS ARE TO BE PROVIDED BY THE CITY OF LAS VEGAS.

I:\003011025\MAPS\PL3 Title Map 12 11 34-4-5 1585 500