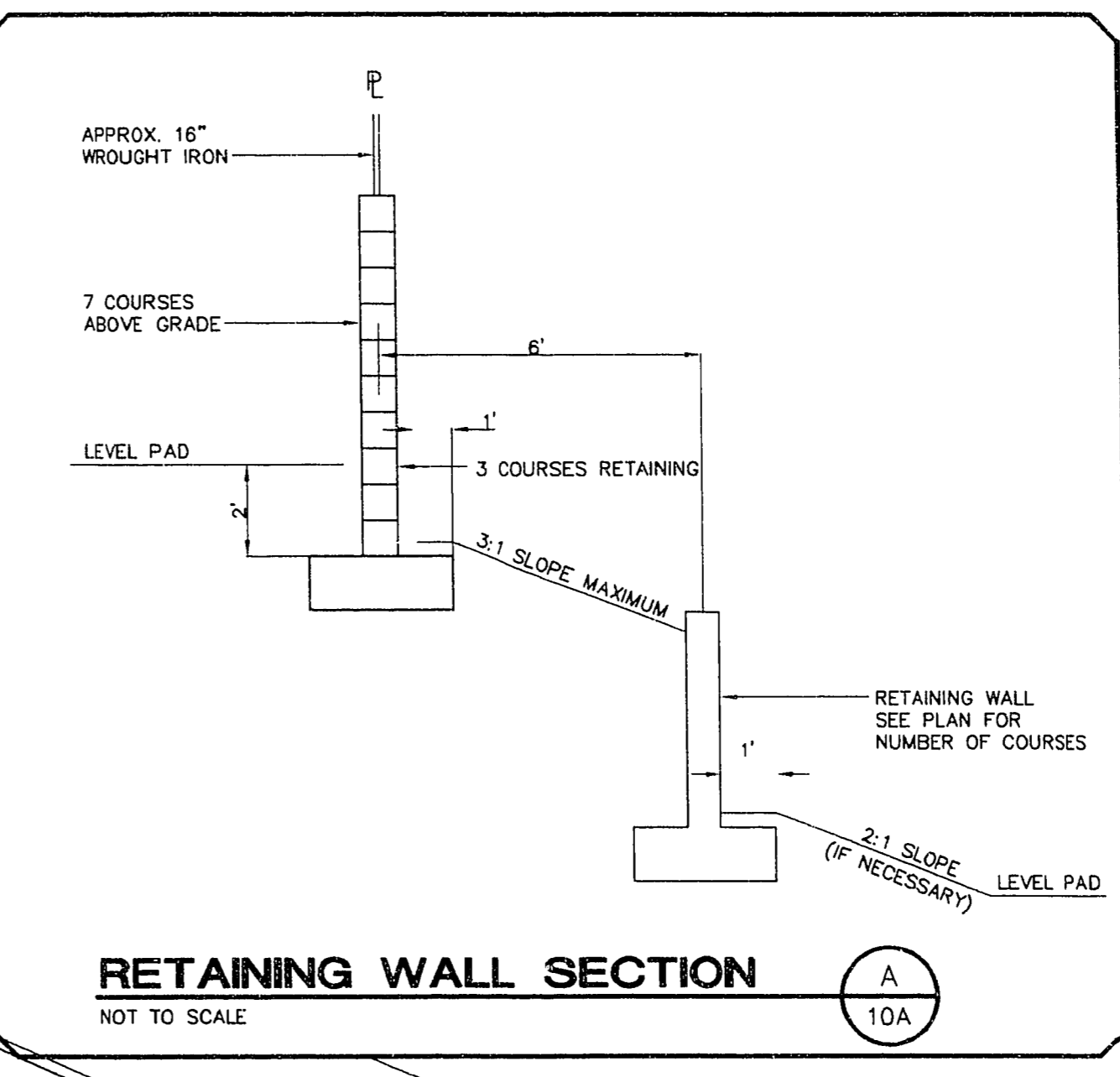
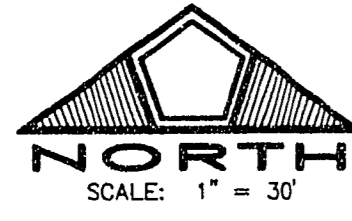


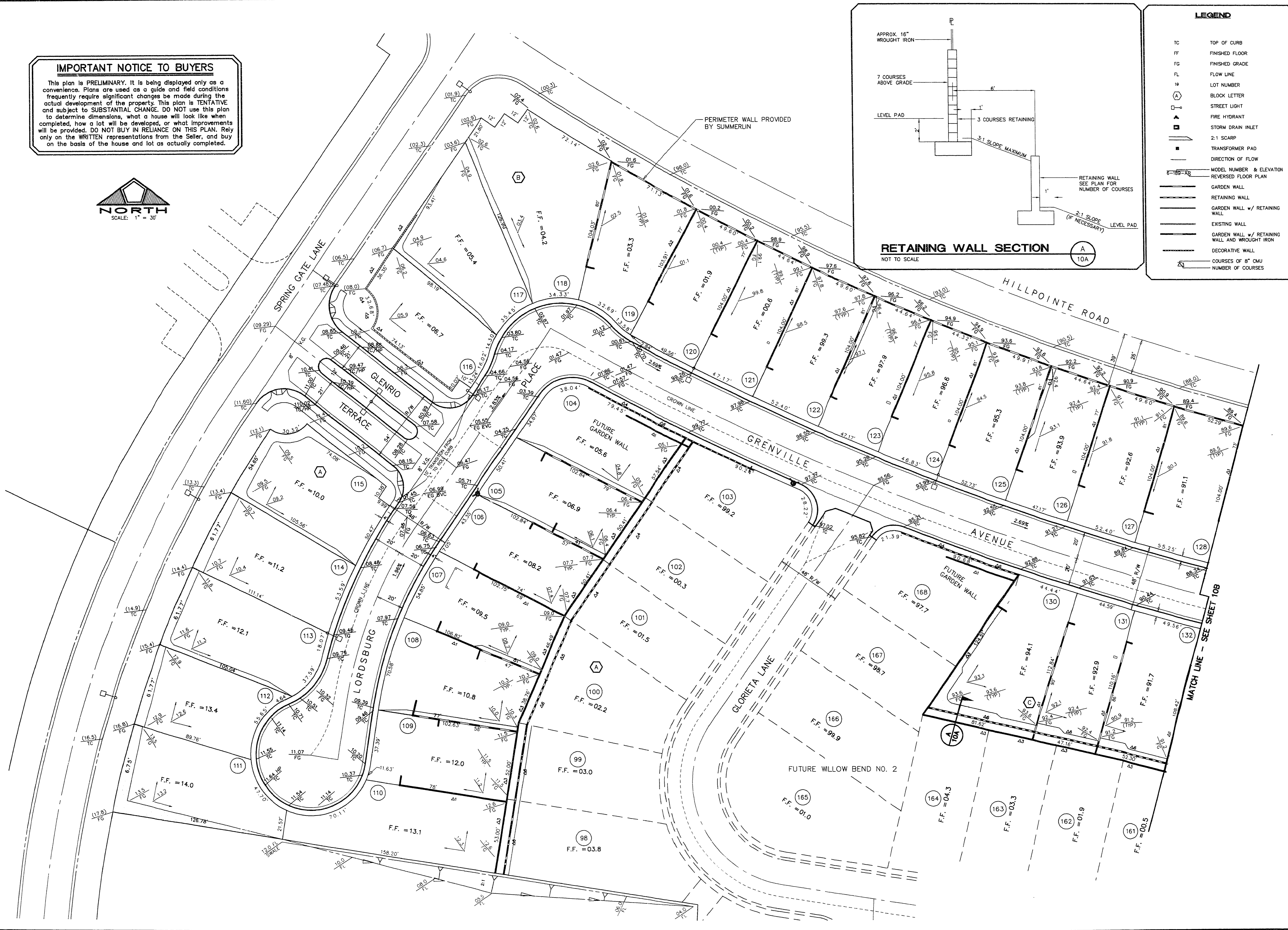
**IMPORTANT NOTICE TO BUYERS**

This plan is PRELIMINARY. It is being displayed only as a convenience. Plans are used as a guide and field conditions frequently require significant changes be made during the actual development of the property. This plan is TENTATIVE and subject to SUBSTANTIAL CHANGE. DO NOT use this plan to determine dimensions, what a house will look like when completed, how a lot will be developed, or what improvements will be provided. DO NOT BUY IN RELIANCE ON THIS PLAN. Rely only on the WRITTEN representations from the Seller, and buy on the basis of the house and lot as actually completed.



**LEGEND**

TC	TOP OF CURB
FF	FINISHED FLOOR
FG	FINISHED GRADE
FL	FLOW LINE
19	LOT NUMBER
(A)	BLOCK LETTER
—	STREET LIGHT
—	FIRE HYDRANT
—	STORM DRAIN INLET
—	2:1 SCARP
—	TRANSFORMER PAD
—	DIRECTION OF FLOW
6-189-AE	MODEL NUMBER & ELEVATION REVERSED FLOOR PLAN
—	GARDEN WALL
—	RETAINING WALL
—	GARDEN WALL w/ RETAINING WALL
—	EXISTING WALL
—	GARDEN WALL w/ RETAINING WALL AND WROUGHT IRON
—	DECORATIVE WALL
—	COURSES OF 8" CMU NUMBER OF COURSES



DATE	11/10/94
NO.	11/10/94
DESCRIPTION	ADDED SHEET

RECOMMENDED DATE: 11/10/94  
 DRAWN BY: KAS  
 DESIGNED BY: JAC  
 CHECKED BY: JAC  
 JOB NO.: 00301032  
 SCALE: 1" = 30'

DATE: 11/07/94  
 DRAWN BY: KAS  
 DESIGNED BY: JAC  
 CHECKED BY: JAC  
 JOB NO.: 00301032  
 SCALE: 1" = 30'

**PENTACORE**  
 Engineering, Inc.  
 6763 West Charleston Boulevard  
 Las Vegas, Nevada 89102  
 (702) 258-0115

LEWIS HOMES OF NEVADA  
 WILLOW BEND NO. 1  
 SUPPLEMENTAL  
 GRADING PLAN

SHEET  
**10A**  
 OF 12

11-15-154 107Y-4332-1

E:\1990\_0030\1027\K61-56P Mod No. 9 23 15 18 1994 BY: DAC

WB1-PP DISK #