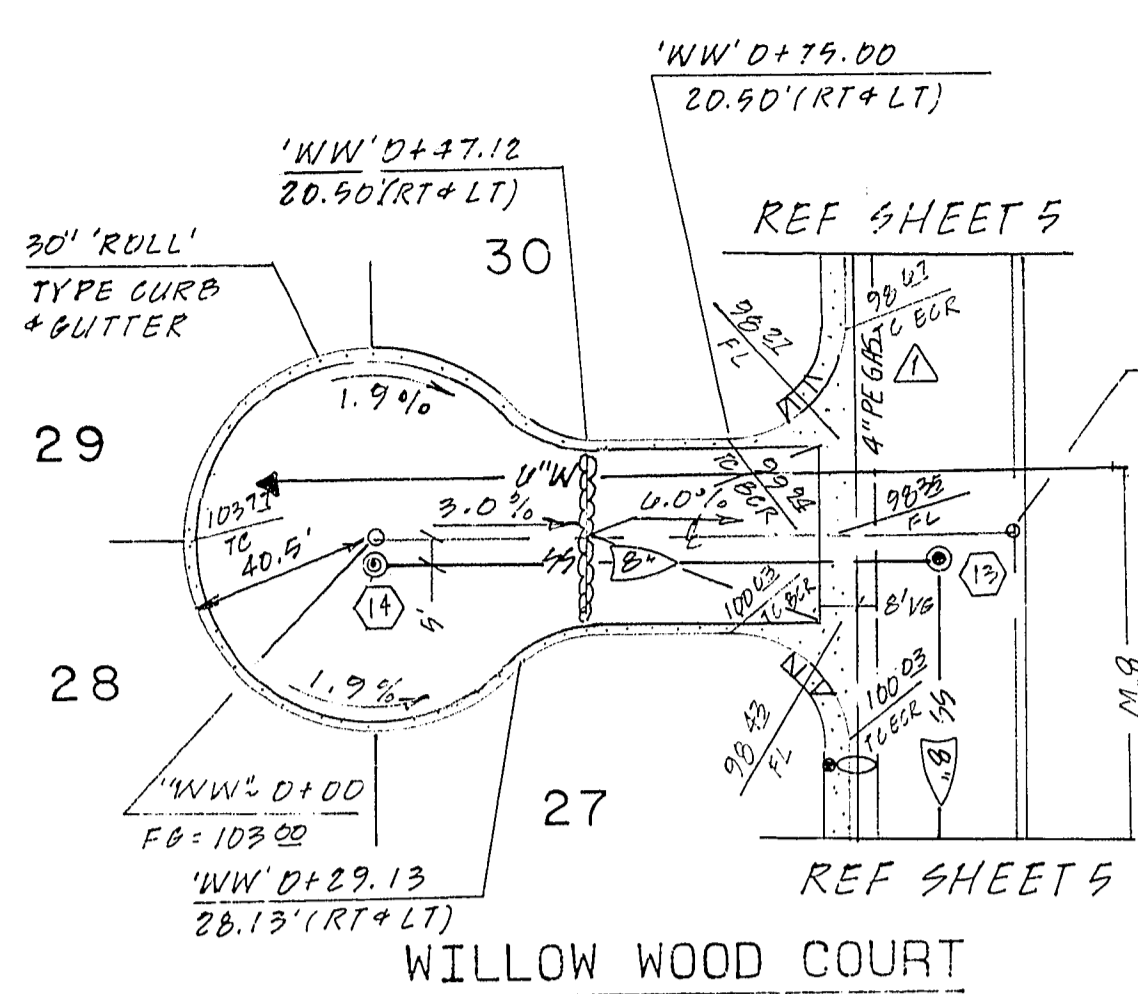
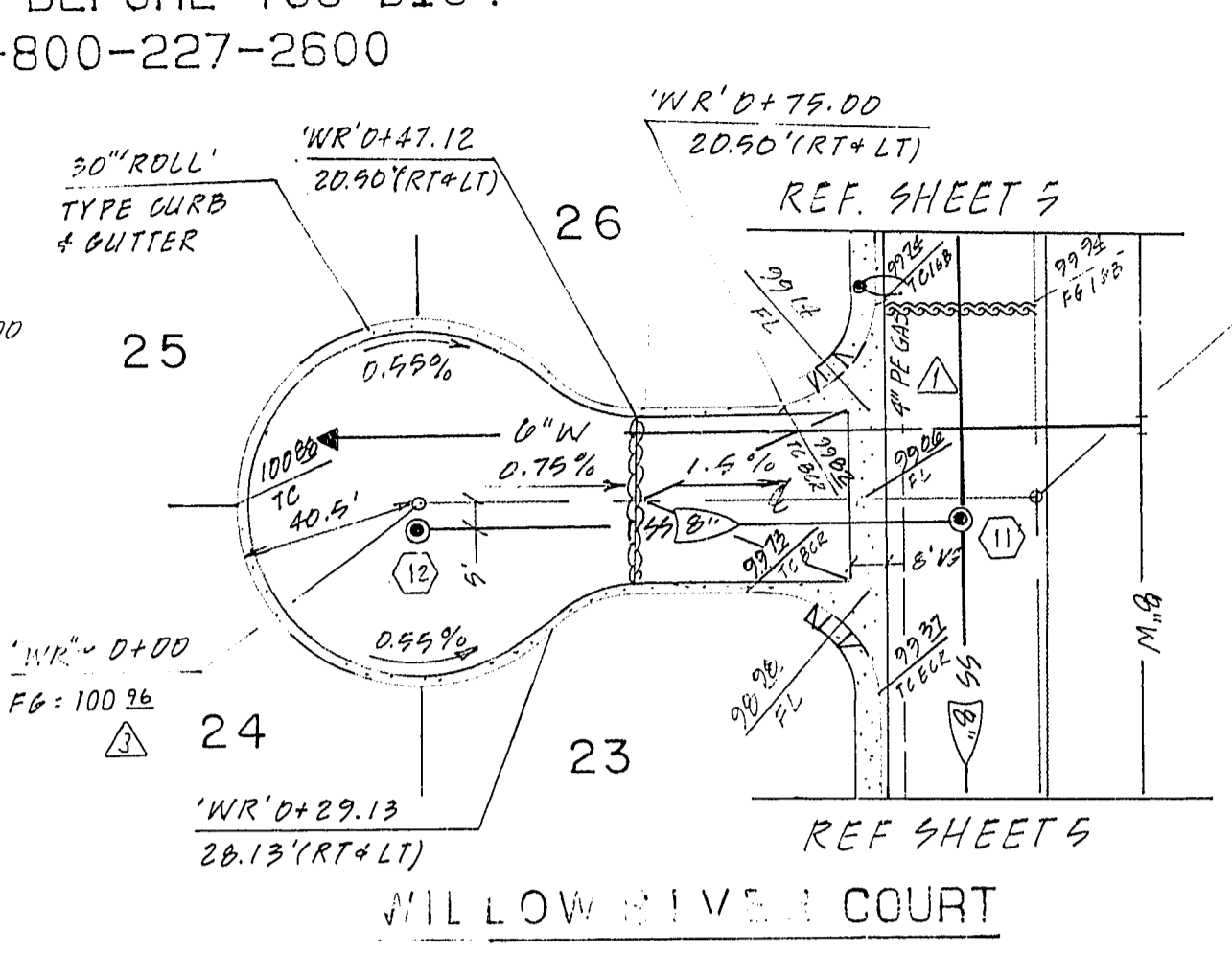


CALL BEFORE YOU DIG!
1-800-227-2600

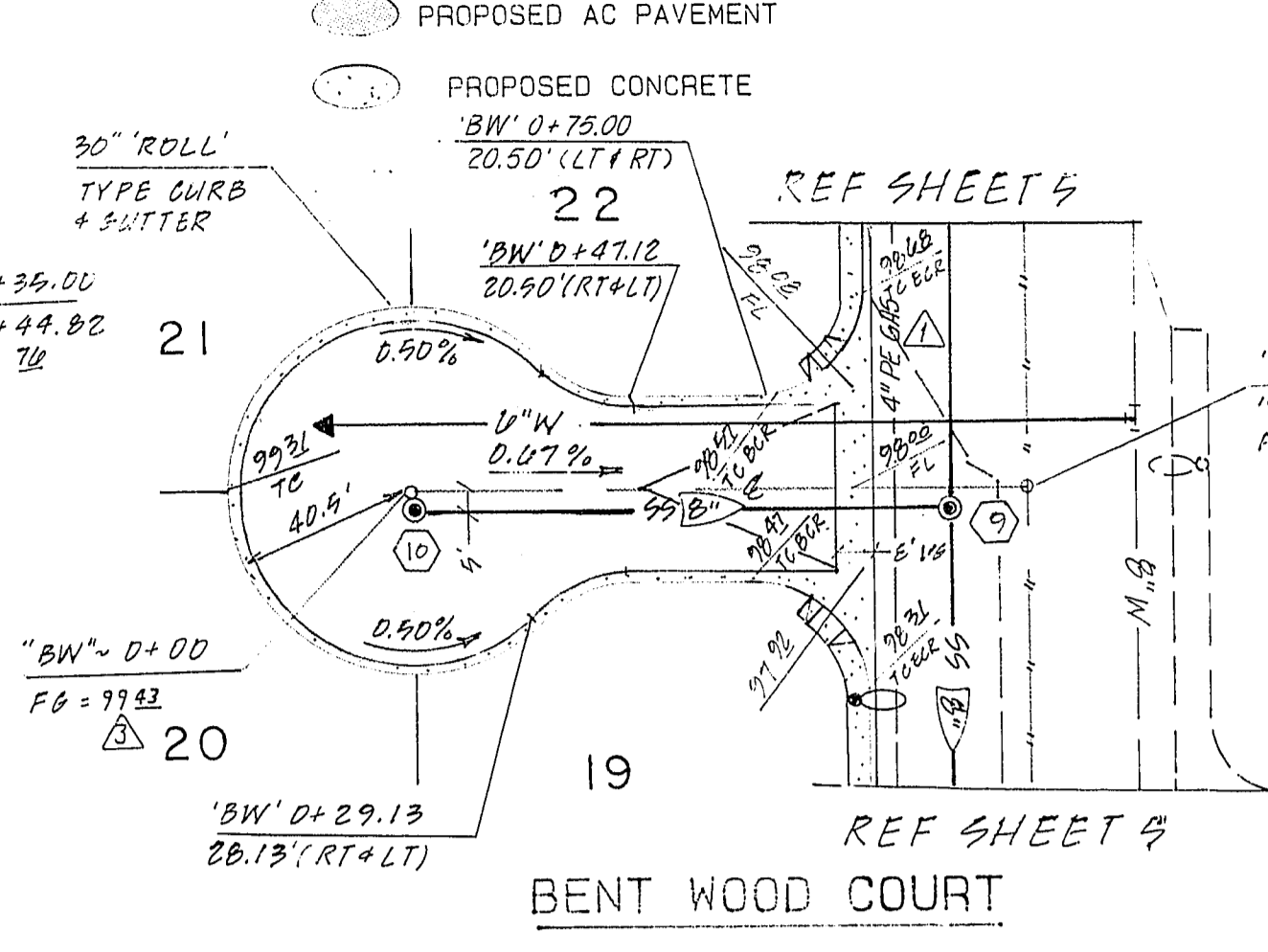
LEGEND
PROPOSED AC PAVEMENT
PROPOSED CONCRETE



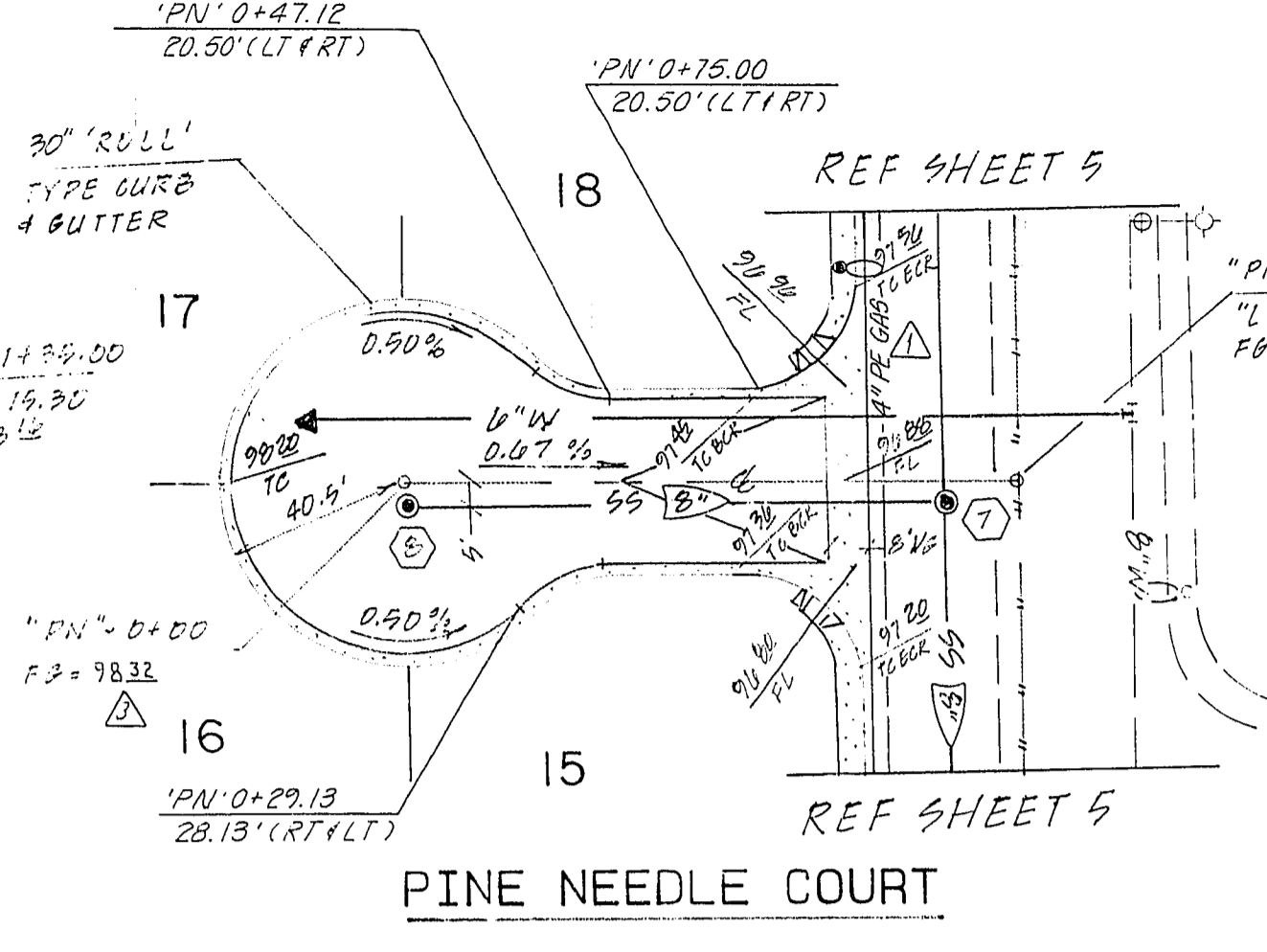
WILLOW WOOD COURT



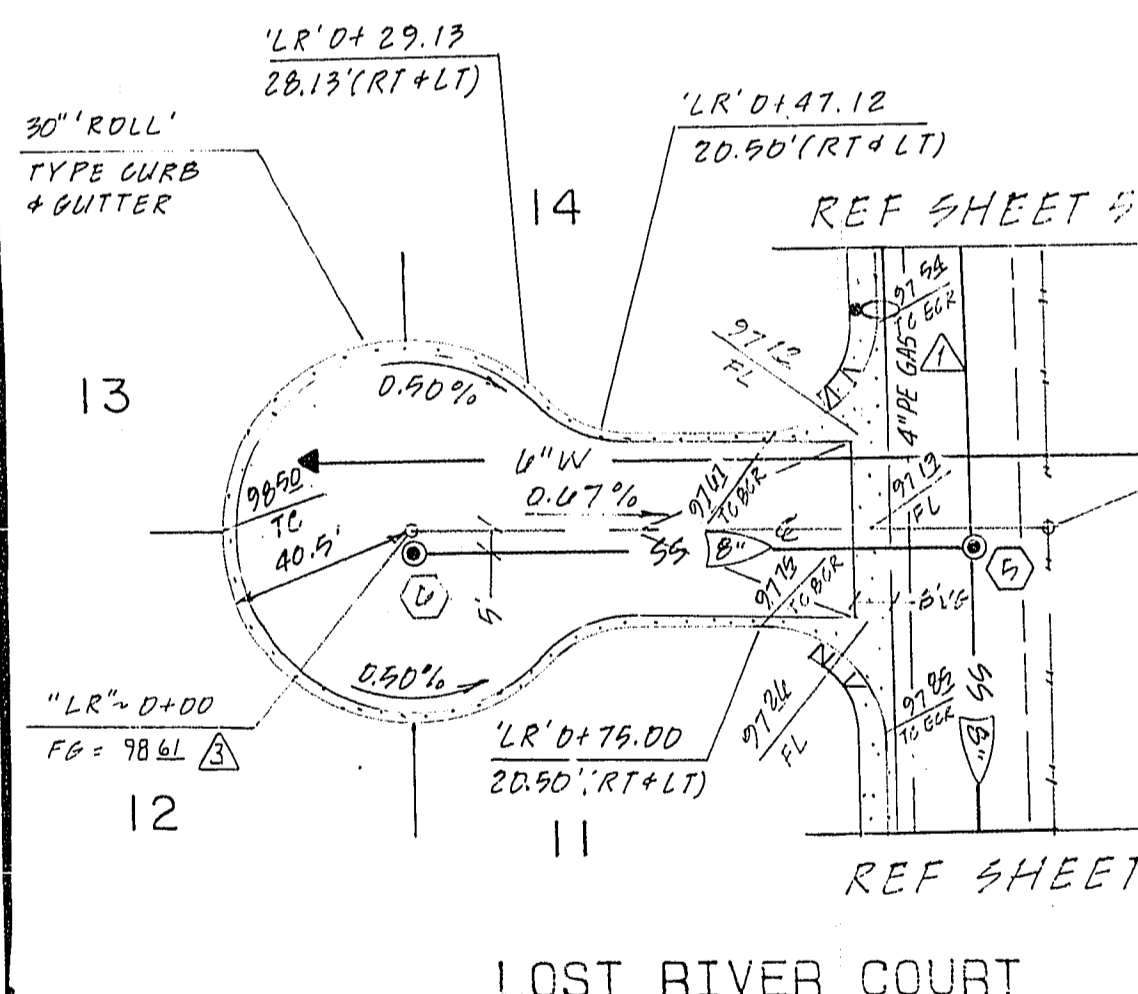
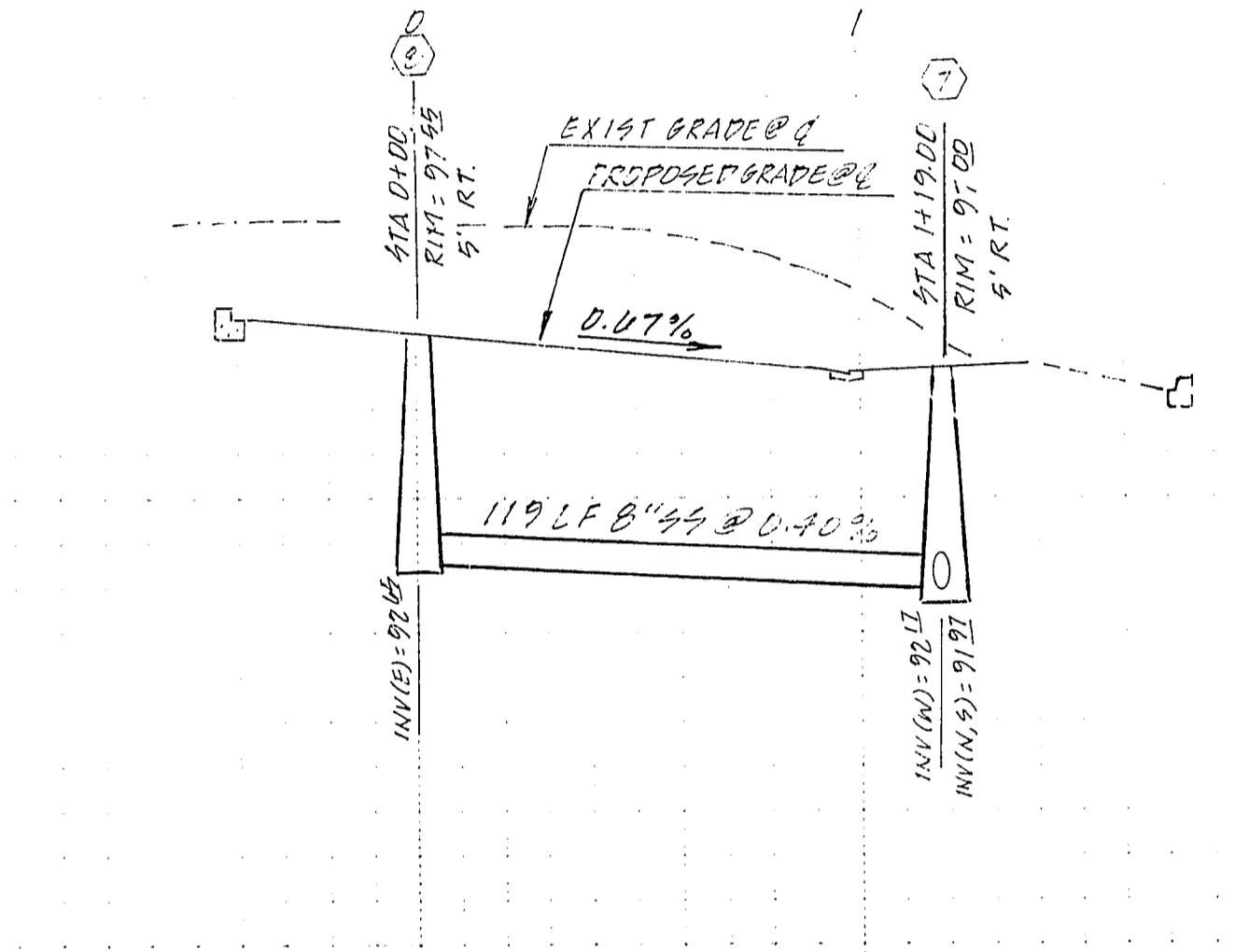
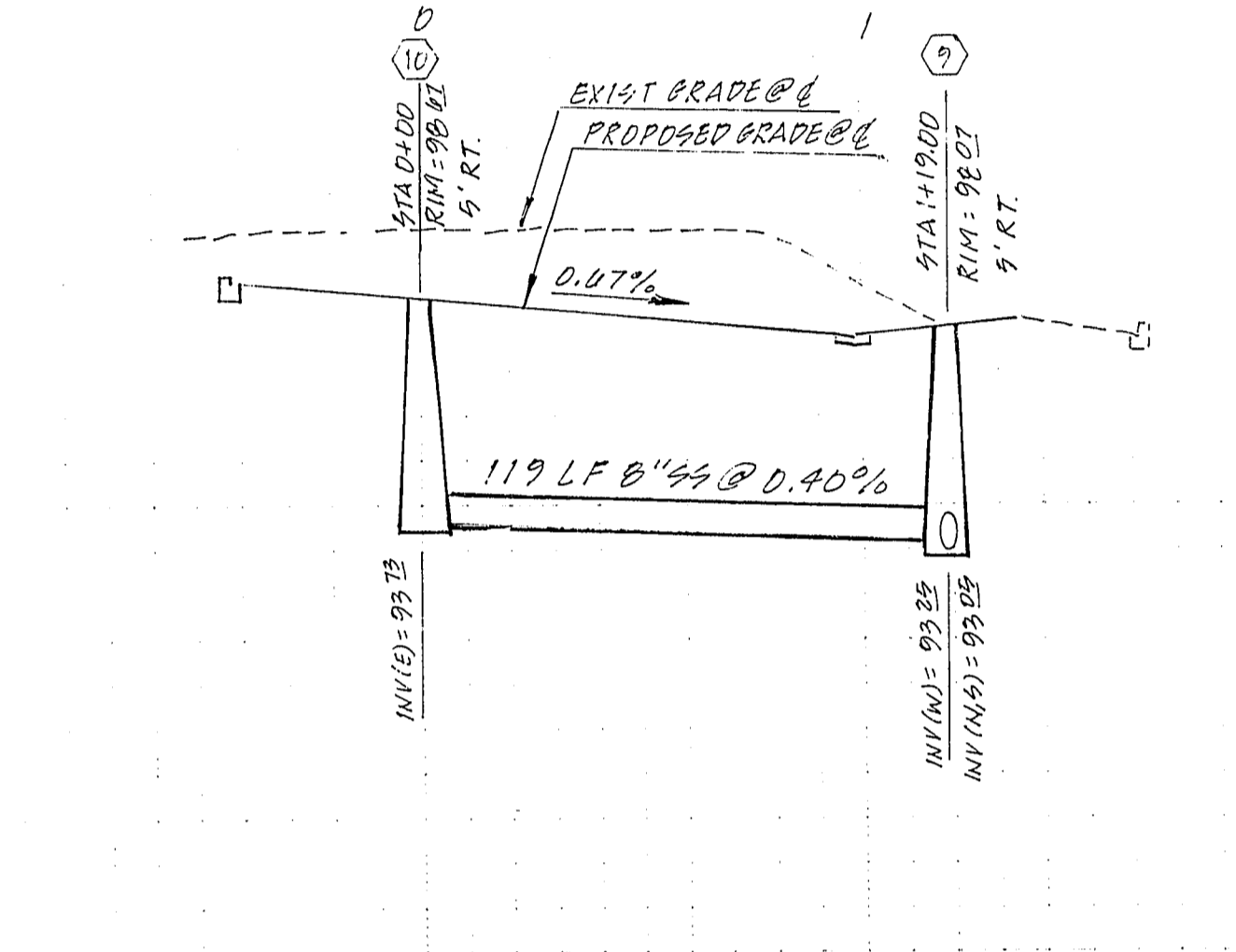
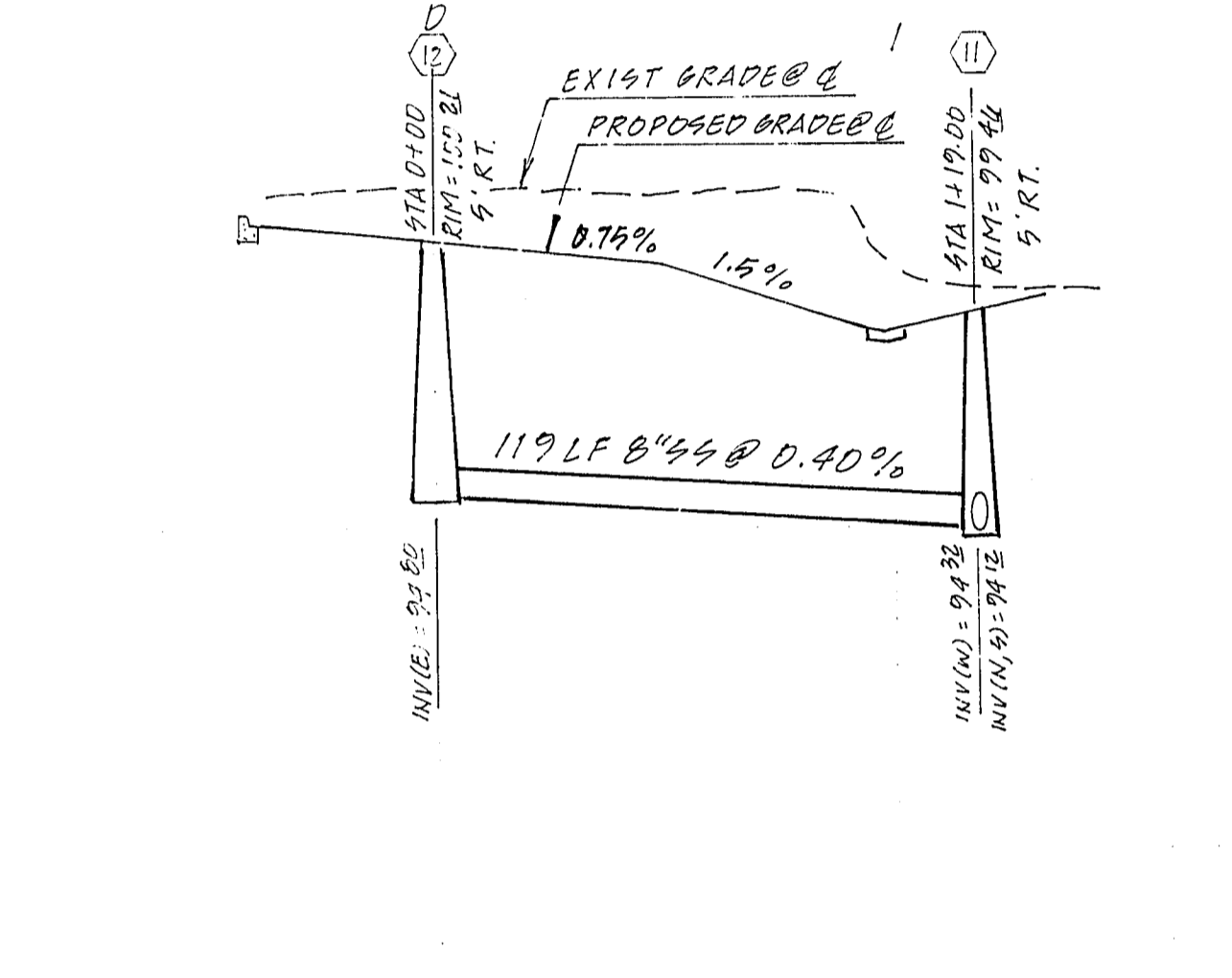
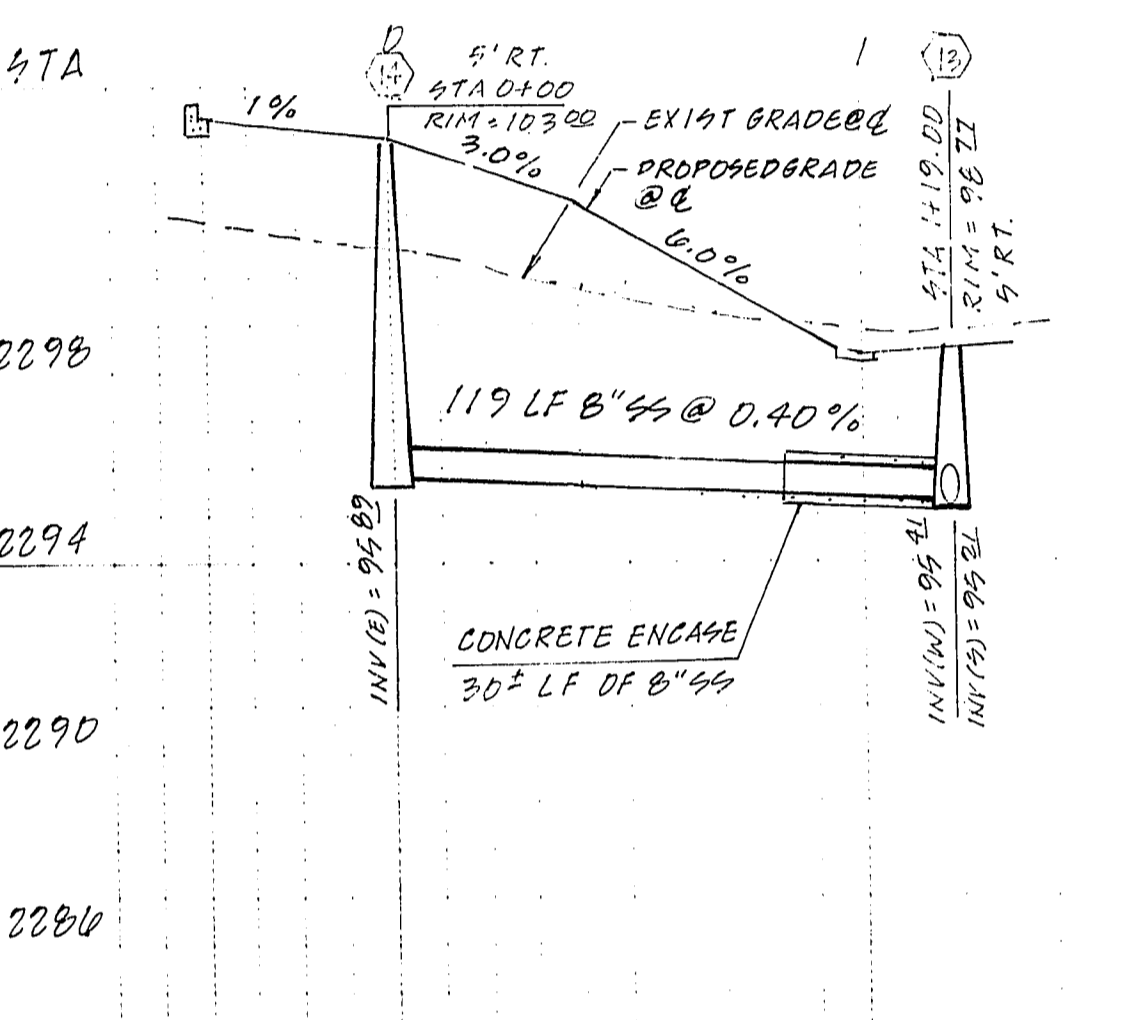
WILLOW RIVER COURT



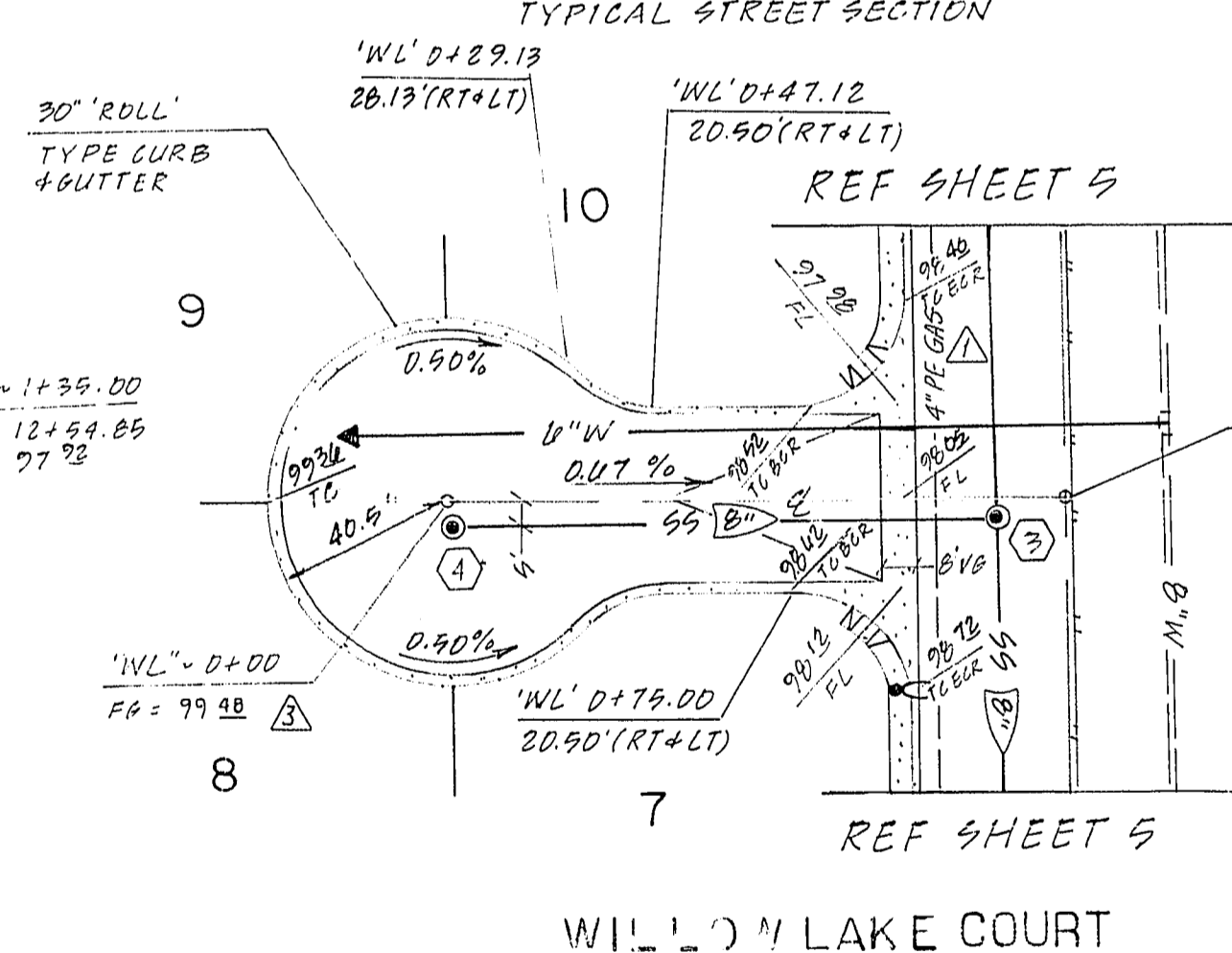
BENT WOOD COURT



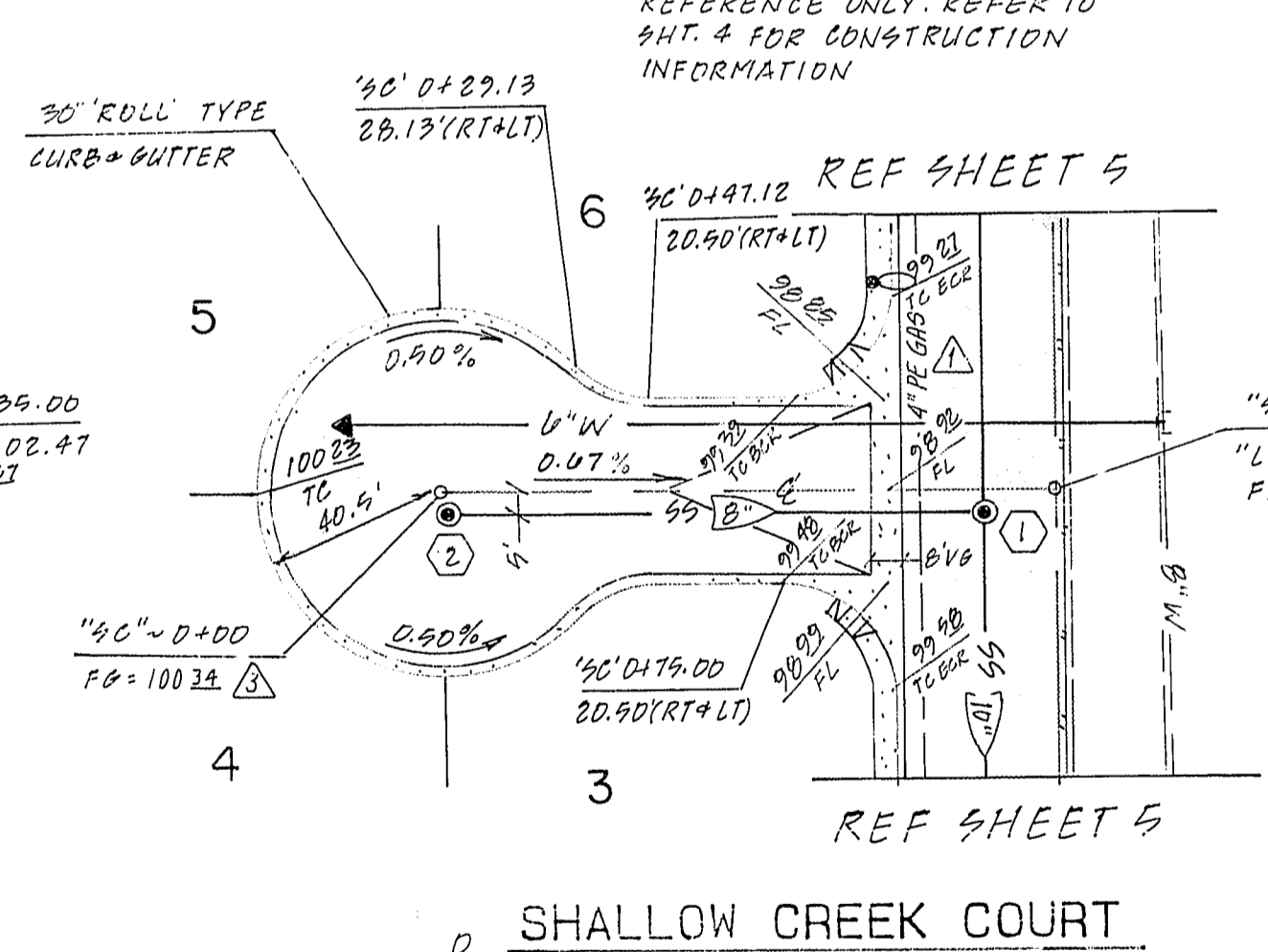
PINE NEEDLE COURT



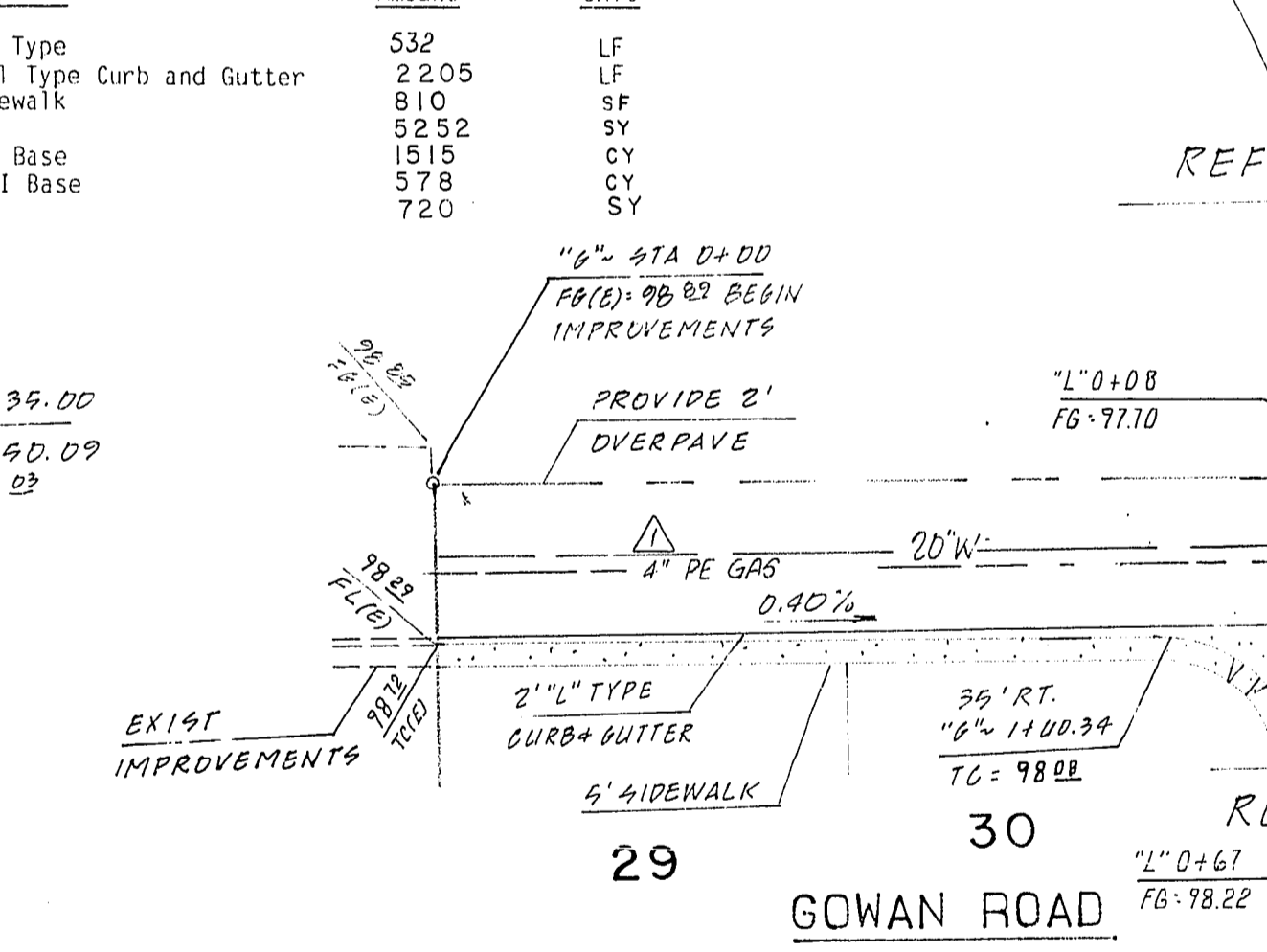
LOST RIVER COURT



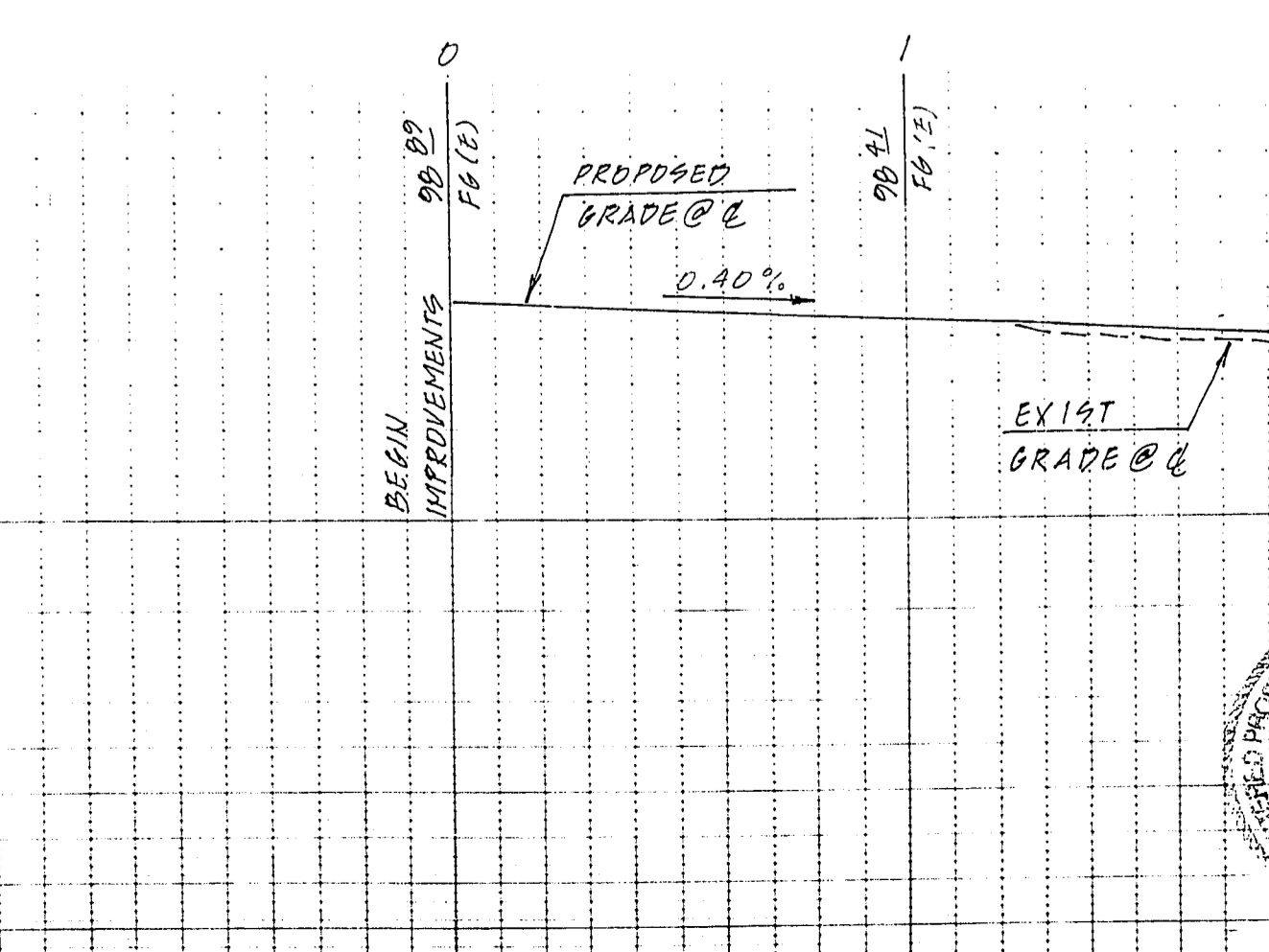
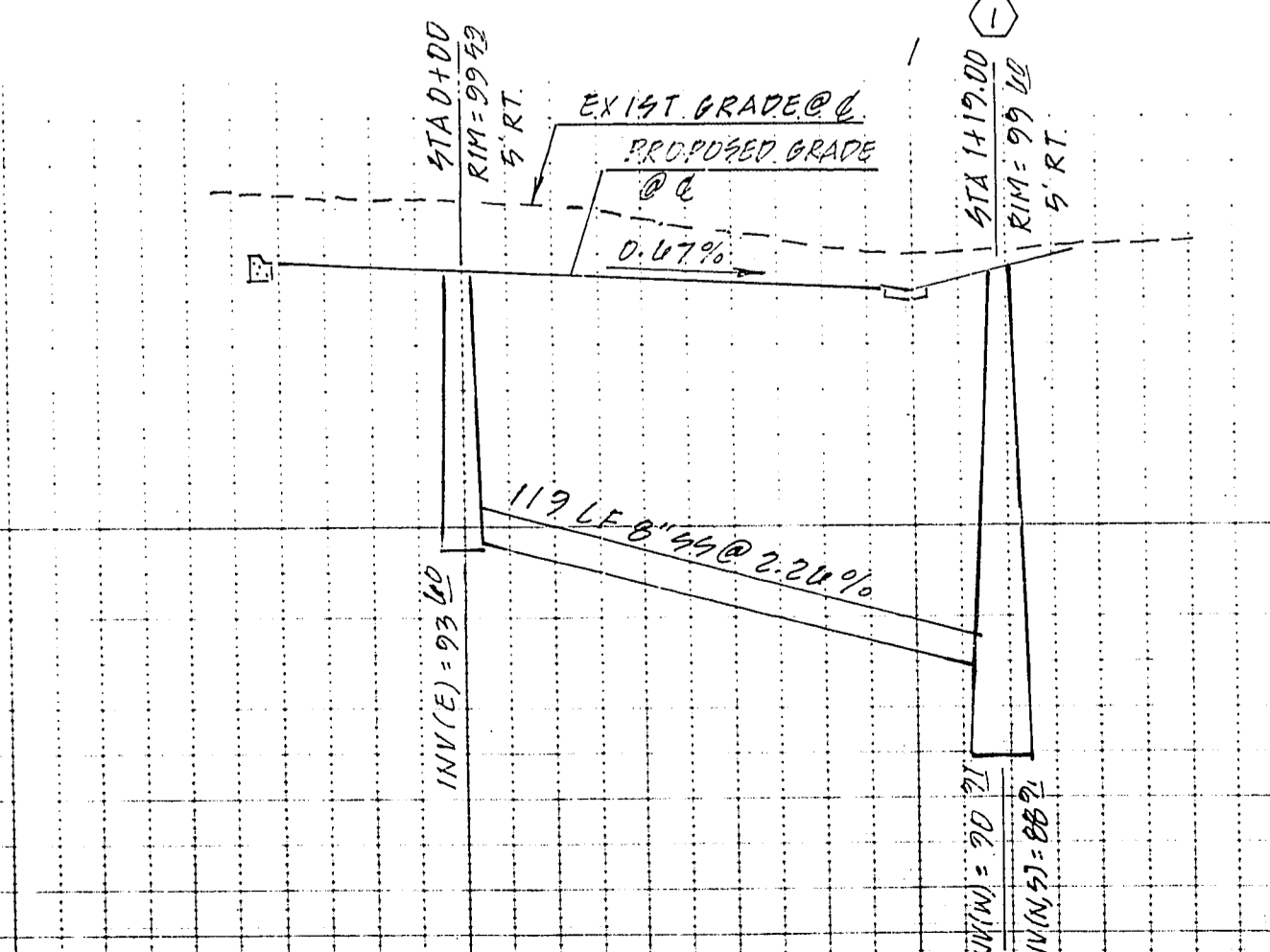
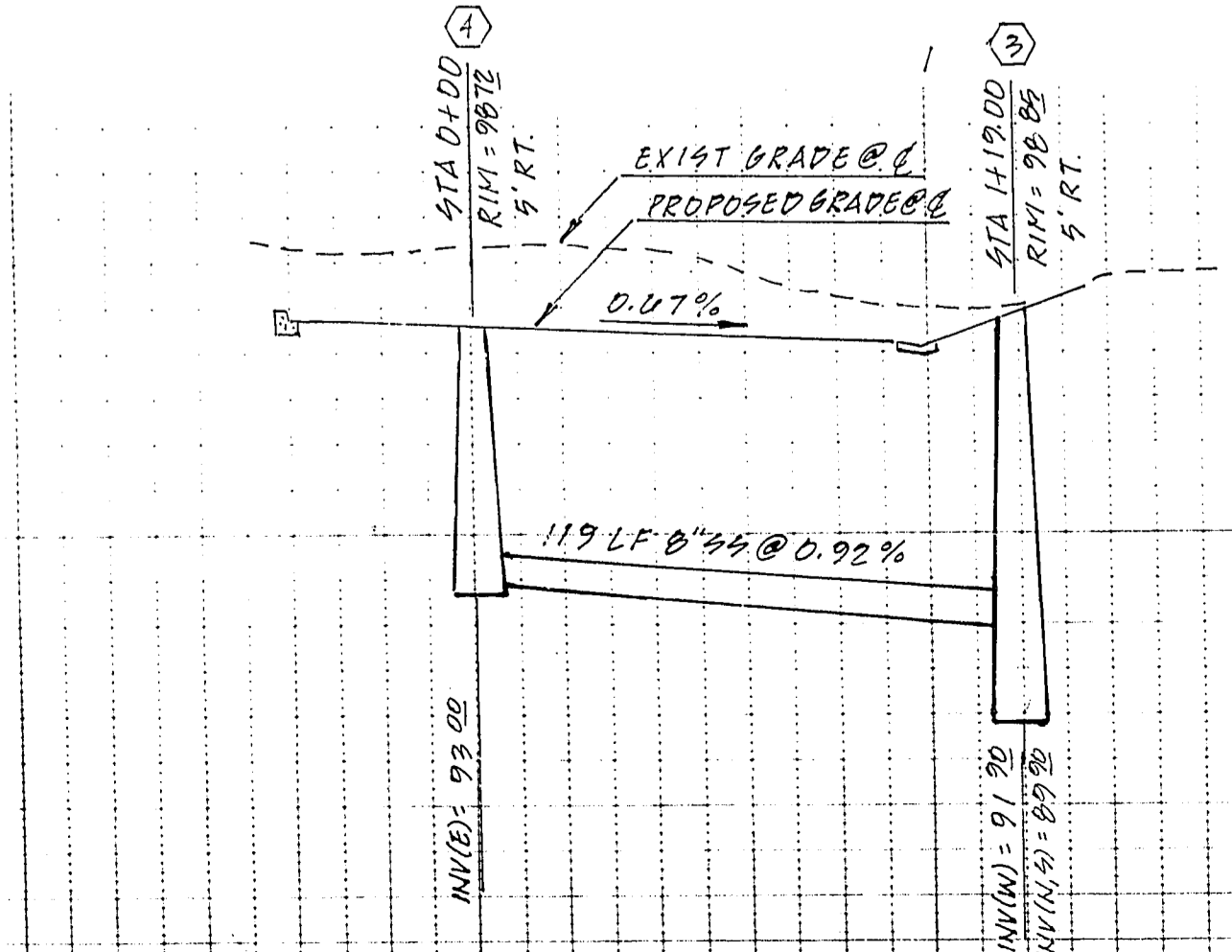
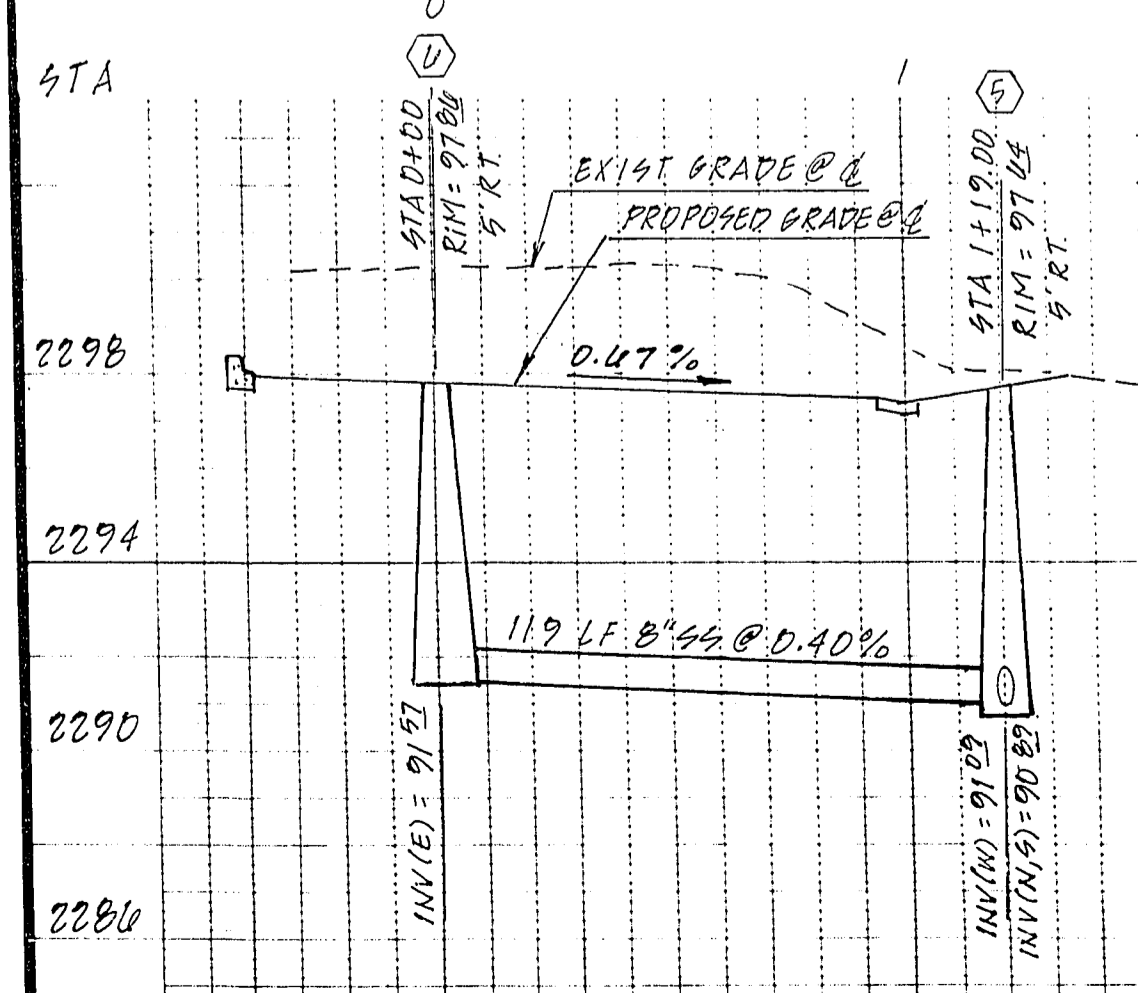
WILLOW LAKE COURT



SHALLOW CREEK COURT



GOWAN ROAD



NOTE: REF. SHEET 7 FOR TYPICAL STREET SECTION

NOTE: STREETLIGHTS SHOWN FOR REFERENCE ONLY. REFER TO SHT. 4 FOR CONSTRUCTION INFORMATION

Description	Amount	Unit
2" x 4" Type	532	LF
30" Roll Type Curb and Gutter	2205	LF
5" Sidewalk	810	SF
2" AC	5252	SY
Type I Base	1515	CY
Type II Base	578	CY
4" AC	720	SY

CONTRACTOR TO PROVIDE TRANSITION SECTION GRADE TO PROVIDE FLOW FROM NEW HG. TO EXIST HG.

SUMMIT ENGINEERING CORPORATION
CONSULTING ENGINEERS AND SURVEYORS
1155 S. TEXAS AVE., SUITE 21, LAS VEGAS, NEVADA 89102
PHONE: (702) 736-0640 FAX: (702) 736-0642

DESIGNED BY: SHB
DRAWN BY: STAFF
CHECKED BY:
DATE: SEPT 1989

WILLOW BEND SITE PLAN/PROFILES
WILLOW BEND
NEVADA GENERAL DEVELOPMENT
CLARK COUNTY, NEVADA
LAS VEGAS, NEVADA

REV.	DATE	DESCRIPTION	BY	APP'D.
1	10/17/89	ADD GAS LANE	SHB	
2	8/23/90	REVISIONS CENTER LANE, DRIVE 17	STAFF	
3	10/9/90	REV. ELEVATIONS	STAFF	

