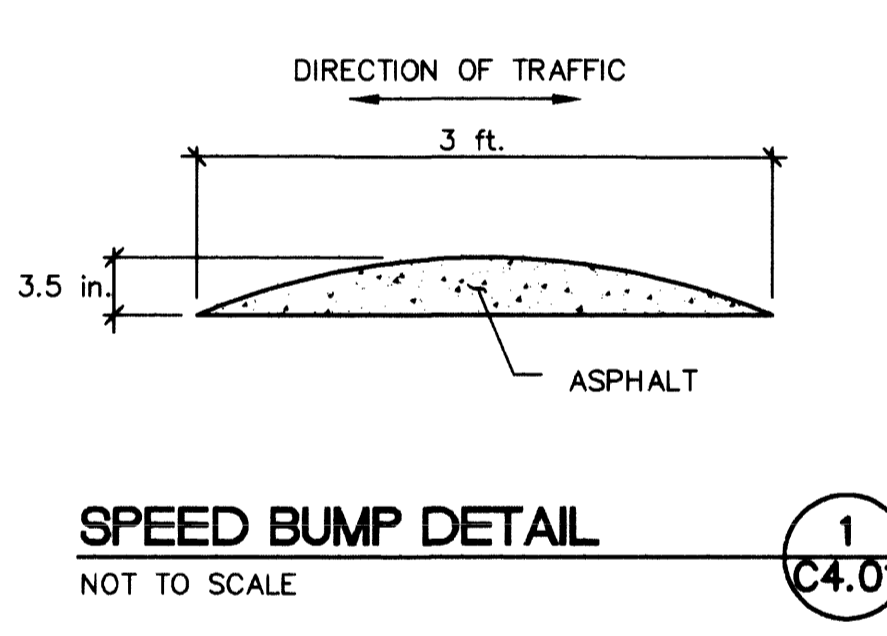
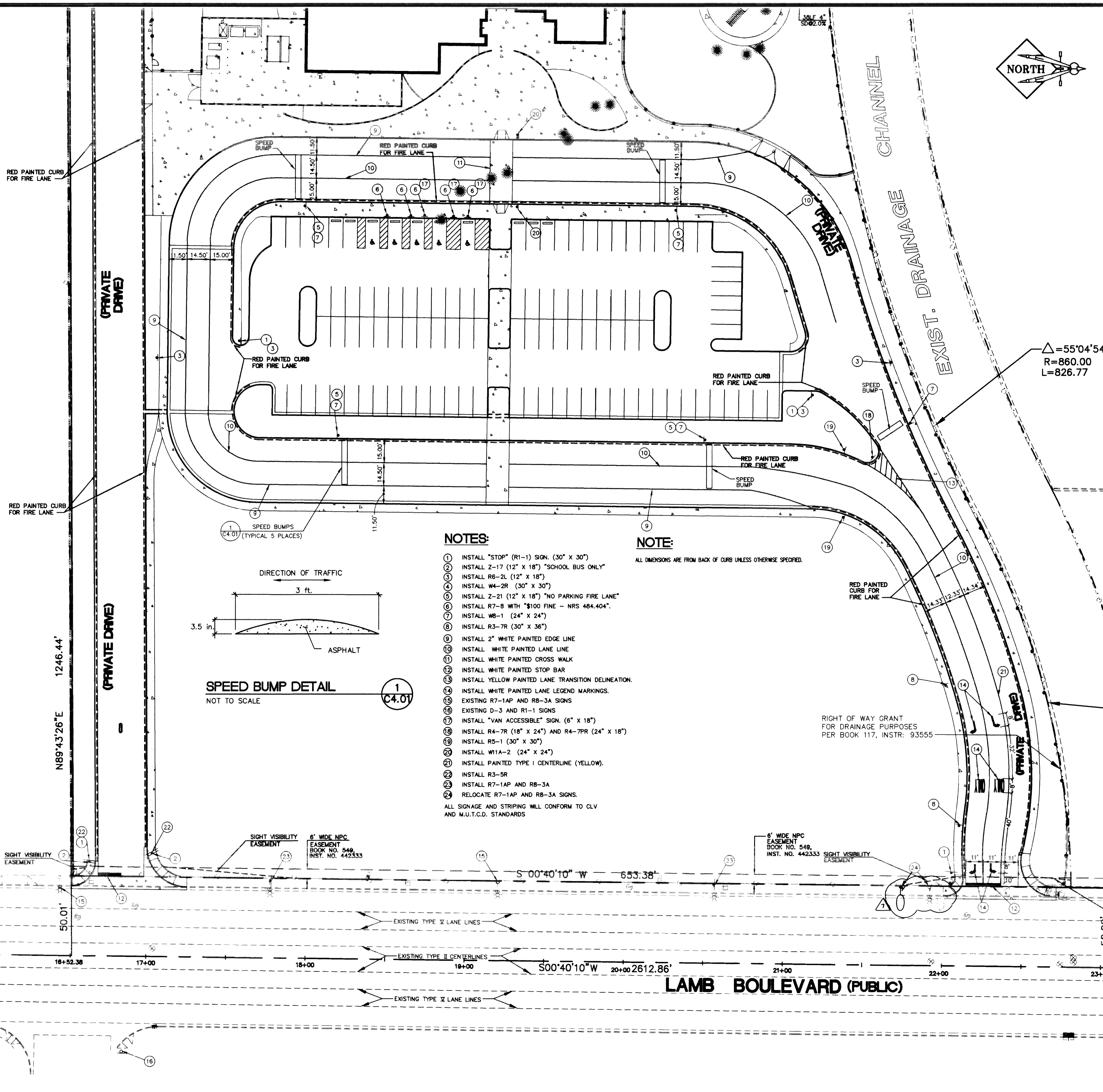


**THE CROSSROADS**  
APN# 140-31-612-001  
APARTMENTS

**STEWART AVENUE**



**NOTES:**

- 1 INSTALL "STOP" (R1-1) SIGN. (30" X 30")
  - 2 INSTALL 2-17 (12" X 18") "SCHOOL BUS ONLY"
  - 3 INSTALL R6-2L (12" X 18")
  - 4 INSTALL W4-2R (30" X 30")
  - 5 INSTALL 2-21 (12" X 18") "NO PARKING FIRE LANE"
  - 6 INSTALL R7-8 WITH "\$100 FINE - NRS 484.404"
  - 7 INSTALL W8-1 (24" X 24")
  - 8 INSTALL R3-7R (30" X 36")
  - 9 INSTALL 2" WHITE PAINTED EDGE LINE
  - 10 INSTALL WHITE PAINTED LANE LINE
  - 11 INSTALL WHITE PAINTED CROSS WALK
  - 12 INSTALL WHITE PAINTED STOP BAR
  - 13 INSTALL YELLOW PAINTED LANE TRANSITION DELINEATION.
  - 14 INSTALL WHITE PAINTED LANE LEGEND MARKINGS.
  - 15 EXISTING R7-1AP AND R8-3A SIGNS
  - 16 EXISTING D-3 AND R1-1 SIGNS
  - 17 INSTALL "VAN ACCESSIBLE" SIGN. (6" X 18")
  - 18 INSTALL R4-7R (18" X 24") AND R4-7PR (24" X 18")
  - 19 INSTALL R5-1 (30" X 30")
  - 20 INSTALL W11A-2 (24" X 24")
  - 21 INSTALL PAINTED TYPE I CENTERLINE (YELLOW).
  - 22 INSTALL R3-5R
  - 23 INSTALL R7-1AP AND R8-3A
  - 24 RELOCATE R7-1AP AND R8-3A SIGNS.
- ALL SIGNAGE AND STRIPING WILL CONFORM TO CLV AND M.U.T.C.D. STANDARDS

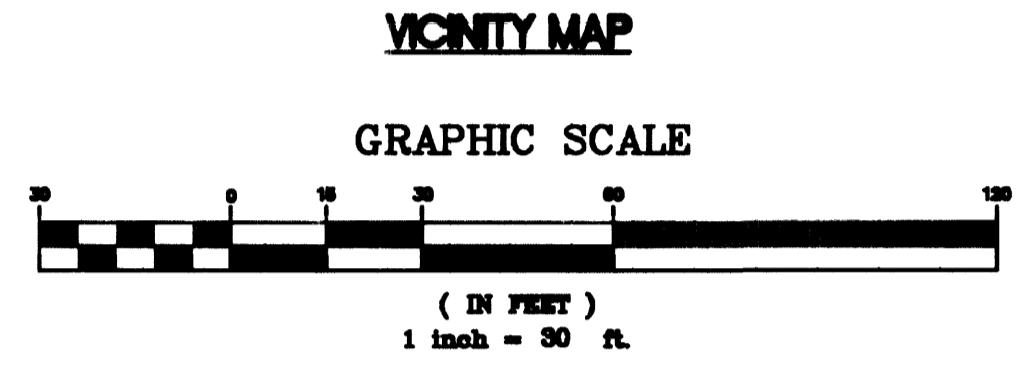
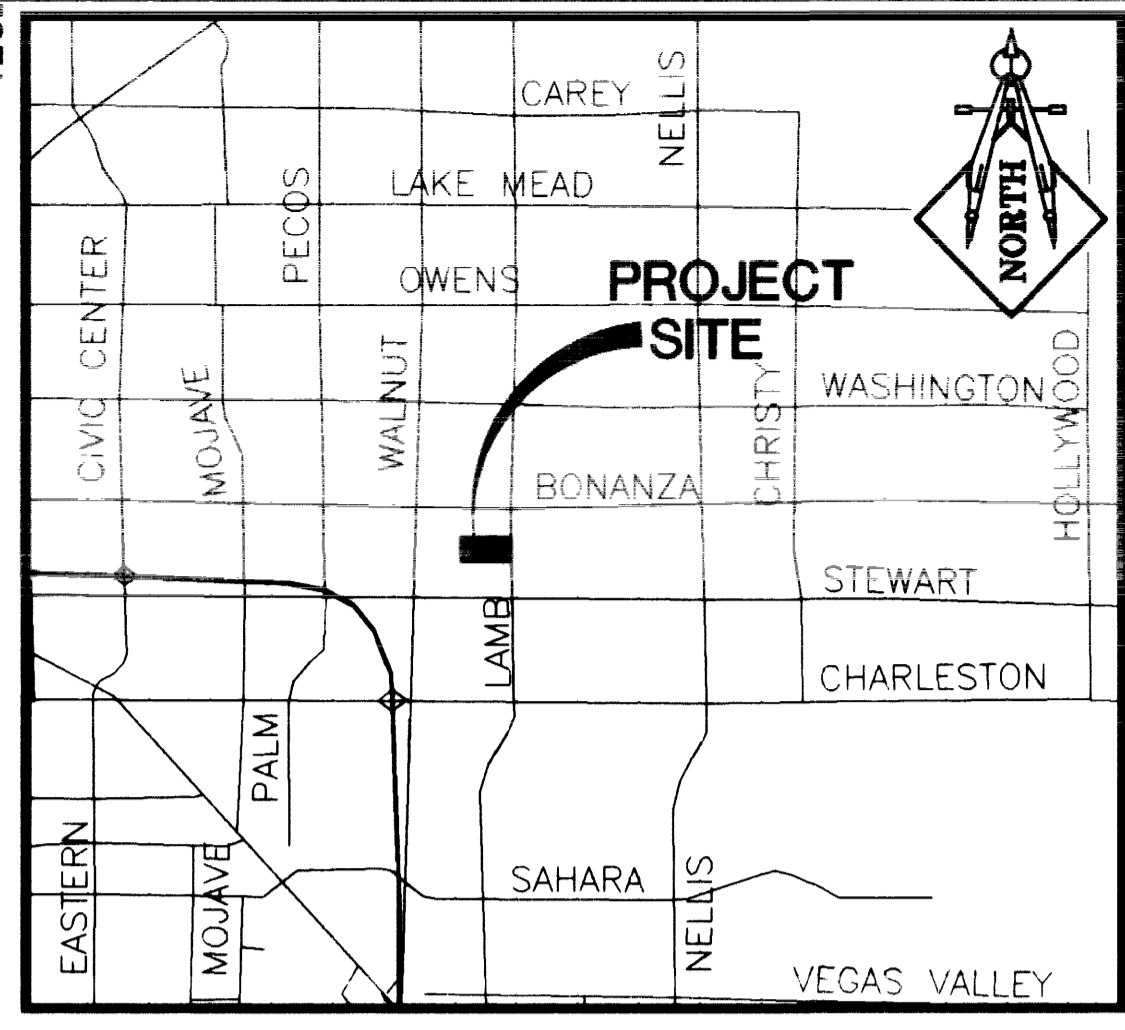
**NOTE:**

ALL DIMENSIONS ARE FROM BACK OF CURB UNLESS OTHERWISE SPECIFIED.

RIGHT OF WAY GRANT FOR DRAINAGE PURPOSES PER BOOK 117, INSTR: 93555

8' WIDE NPC EASEMENT BOOK NO. 548, INST. NO. 442333

SIGHT VISIBILITY EASEMENT



Call before you Dig  
1-800-277-2600

Call before you OVERHEAD  
1-702-583-6111

**JMA ARCHITECTURE**  
1822 SOUTH BARTLAND PARKWAY  
SUITE 1000 LAS VEGAS, NV 89102  
TEL: (702) 365-9312  
FAX: (702) 365-9317

**LOCHSA ENGINEERING**  
8828 Spring Mountain Rd.  
Suite 308  
Las Vegas, Nevada, 89146  
Phone: (702) 365-3312  
Fax: (702) 365-9317

**NOTE**  
LOCHSA ENGINEERING ASSUMES NO RESPONSIBILITY FOR EXISTING UTILITY LOCATIONS AND ELEVATIONS. THE UTILITIES SHOWN ON THIS DRAWING ARE FROM THE BEST AVAILABLE INFORMATION. IT IS THE CONTRACTOR'S RESPONSIBILITY TO FIELD VERIFY THE LOCATION AND ELEVATION OF ALL UTILITIES, INCLUDING, BUT NOT LIMITED TO THE WATER, FIRE, SANITARY SEWER, STORM SEWER, TELEPHONE, POWER, GAS, IRRIGATION LINES PRIOR TO THE COMMENCEMENT OF CONSTRUCTION. IF CONFLICT EXISTS BETWEEN WHAT IS SHOWN ON THESE DRAWINGS AND WHAT EXISTS IN THE FIELD, THE CONTRACTOR IS TO NOTIFY THE PROJECT ARCHITECT, OWNER'S REPRESENTATIVE AND THE PROJECT ENGINEER IMMEDIATELY.

**LEGEND**

EXISTING	PROPOSED	DESCRIPTION
---	---	RIGHT-OF-WAY
---	---	CENTERLINE
---	---	WATER LINE
---	---	SANITARY SEWER LINE
---	---	GAS LINE
---	---	STORM DRAIN
---	---	POWER LINE/POWER POLE
---	---	TELEPHONE LINE
---	---	FIRE HYDRANT
---	---	WATER VALVE
---	---	METERS/FALL BOXES
---	---	REDUCER
---	---	MANHOLE
---	---	CLEANOUT
---	---	CONTOUR
---	---	A.C. PAVING
---	---	TYPE "L" CURB & GUTTER
---	---	TYPE "A" CURB
---	---	CONCRETE
---	---	RETAINING WALL
---	---	CHAIN LINK FENCE
---	---	GRADE BREAK
---	---	WIRE FENCE
---	---	SAFETY LINE
---	---	FINISH FLOOR
---	---	CLEANOUT INVERT ELEV.
---	---	FLOW LINE
---	---	FINISH GRADE
---	---	TOP OF AC PWT.
---	---	TOP OF FALL SURFACE
---	---	TOP OF CURB
---	---	TOP OF WALL
---	---	GATE
---	---	SIGN
---	---	STREET LIGHTS
---	---	100 W.H.P.S.
---	---	150 W.H.P.S.
---	---	200 W.H.P.S.
---	---	250 W.H.P.S.

**ON-SITE STRIPING AND SIGNAGE PLAN**

**WILLIAM K. MOORE**  
ELEMENTARY SCHOOL

MARK L. HEDGE  
REGISTERED PROFESSIONAL ENGINEER  
STATE OF NEVADA  
NO. 8446

DATE: 9/7/99  
SCALE: 1" = 30'

SHEET  
**C4.01**  
9 OF 15 SHEETS  
DRAWING NO.  
715-121

J:\v\1021\UPH\INGS\6121SITE-SN.dwg Tue Sep 07 11:54:46 1999 J...ANE