

LEGEND			
	RIGHT-OF-WAY		CENTERLINE
	WATER LINE		SANITARY SEWER LINE
	GAS LINE		STORM DRAIN
	POWER LINE		TELEPHONE LINE
	FIRE HYDRANT		WATER VALVE
	MANHOLE		CLEANOUT
	CONTOUR		A.C. PAVING
	TYPE "L" CURB & GUTTER		TYPE "A" CURB
	CONCRETE		RETAINING WALL
	CHAIN LINK FENCE		STREET LIGHT
	GRADE BREAK		WIRE FENCE
	FINISH FLOOR		CLEANOUT INVERT ELEV.
	FINISH GRADE		TOP OF AC PAVT.
	TOP OF FULL SURFACE		TOP OF CURB
	TOP OF WALL		GATE
	SIGN		STREET LIGHT
	100 W.H.P.S.		150 W.H.P.S.
	200 W.H.P.S.		250 W.H.P.S.

NOTE:
 LOCHSA ENGINEERING ASSUMES NO RESPONSIBILITY FOR EXISTING UTILITY LOCATIONS AND ELEVATIONS. THE UTILITIES SHOWN ON THIS DRAWING ARE FROM THE BEST AVAILABLE INFORMATION. IT IS THE CONTRACTOR'S RESPONSIBILITY TO FIELD VERIFY THE LOCATION AND ELEVATION OF ALL UTILITIES, INCLUDING, BUT NOT LIMITED TO THE WATER, FIRE, SANITARY SEWER, STORM SEWER, TELEPHONE, POWER, GAS, IRRIGATION LINES PRIOR TO THE COMMENCEMENT OF CONSTRUCTION. IF CONFLICT EXISTS BETWEEN WHAT IS SHOWN ON THESE DRAWINGS AND WHAT EXISTS IN THE FIELD, THE CONTRACTOR IS TO NOTIFY THE PROJECT ARCHITECT, OWNER'S REPRESENTATIVE AND THE PROJECT ENGINEER IMMEDIATELY.

NOTE:
 PROPOSED FINISH GRADES FOR MOW STRIP, A.C. PAVEMENT, VALLEY GUTTER, ETC. AROUND PLAYGROUND AREA ARE BASED ON 3-INCH THICK FALL SURFACE AND ARE TO BE ADJUSTED AS NECESSARY BY THE CONTRACTOR WHEN THE THICKNESS OF THE FALL SURFACE IS VERIFIED. IF THE ADJUSTMENT WOULD CAUSE A TRIP HAZARD SITUATION, DRAINAGE PROBLEM, ETC., CONTRACTOR TO CONTACT OWNER'S REPRESENTATIVE, PROJECT ARCHITECT AND PROJECT ENGINEER PRIOR TO COMMENCEMENT OF WORK. ALSO REFERENCE DETAILS OF PLAY SURFACE, ETC. ON ARCHITECTURAL DRAWING.

LEGAL DESCRIPTION
 BEING A PORTION OF THE NORTHEAST QUARTER (NE 1/4) OF THE SOUTHWEST QUARTER (SE 1/4) OF THE NORTH HALF (NORTH 1/2) OF SECTION 31, TOWNSHIP 20 SOUTH, RANGE 82 EAST, M.D.M., CLARK COUNTY NEVADA.

AP.N. 140-31-601-001

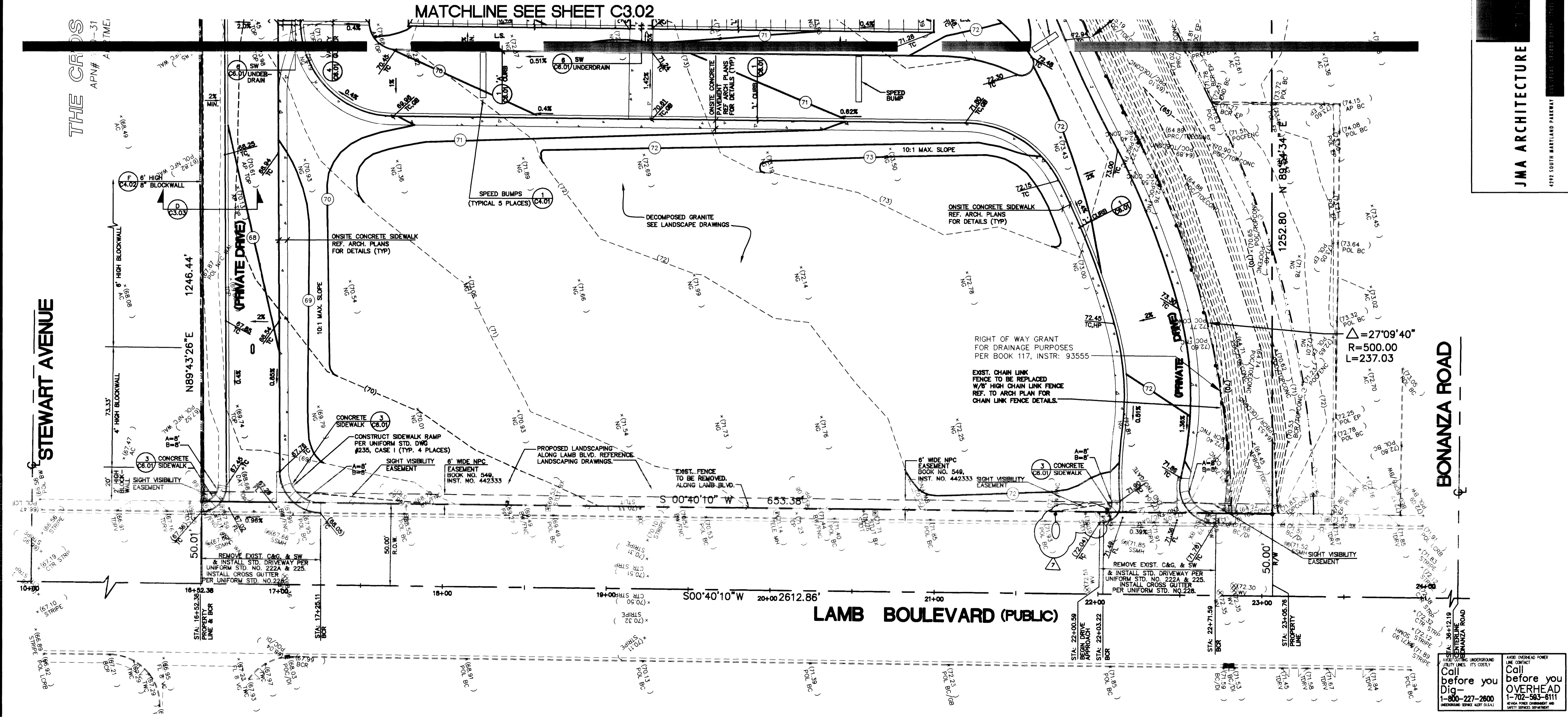
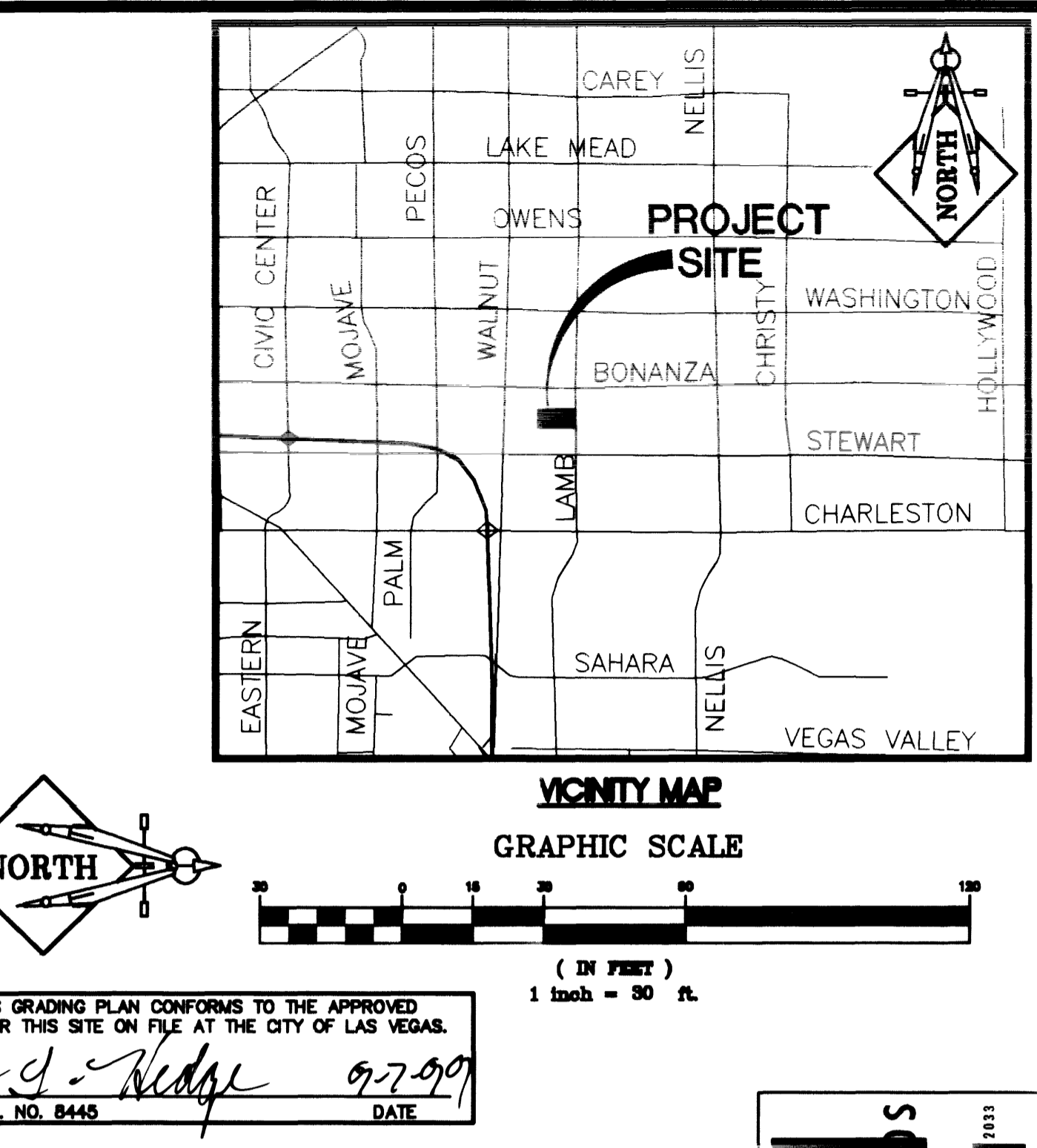
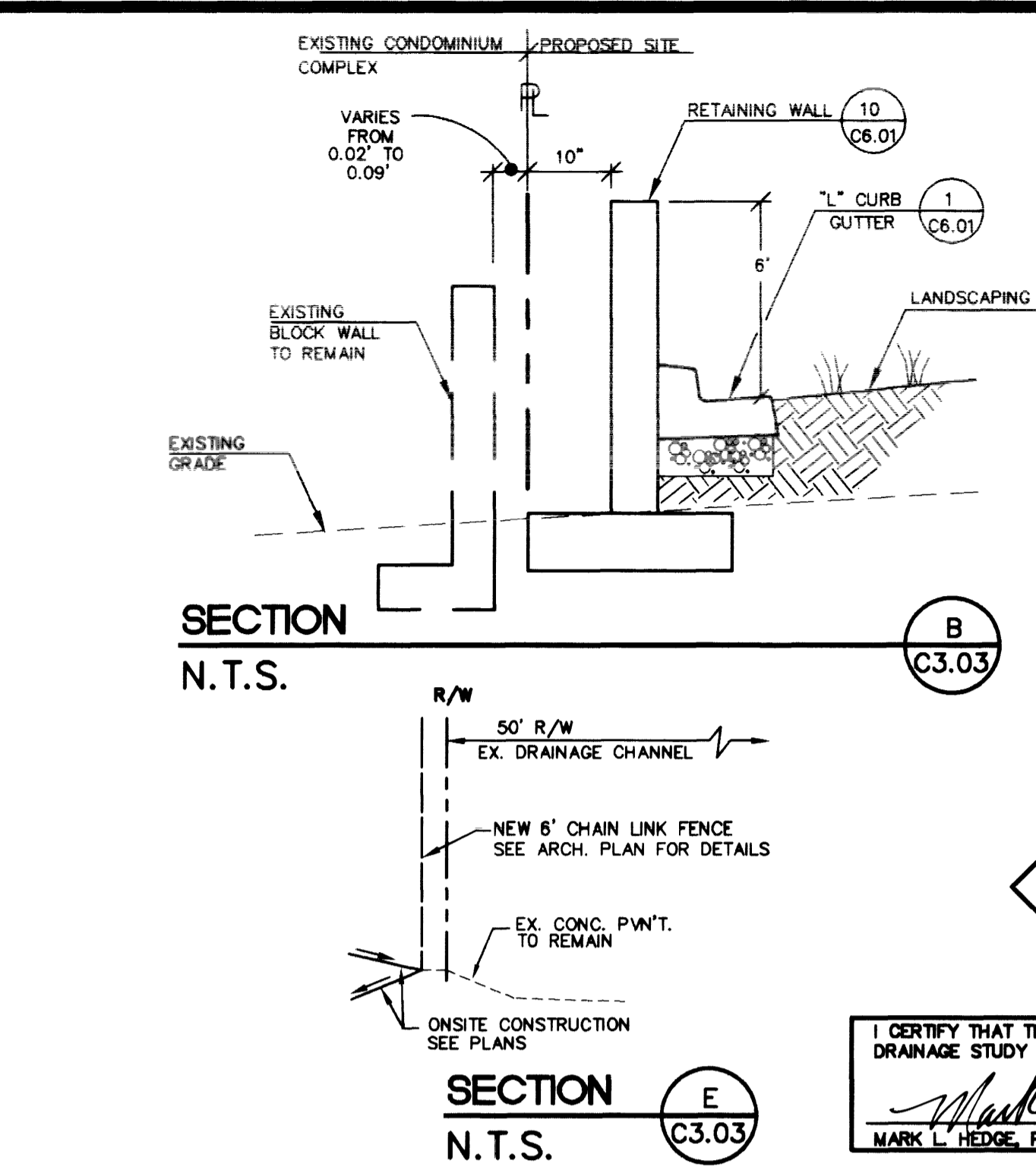
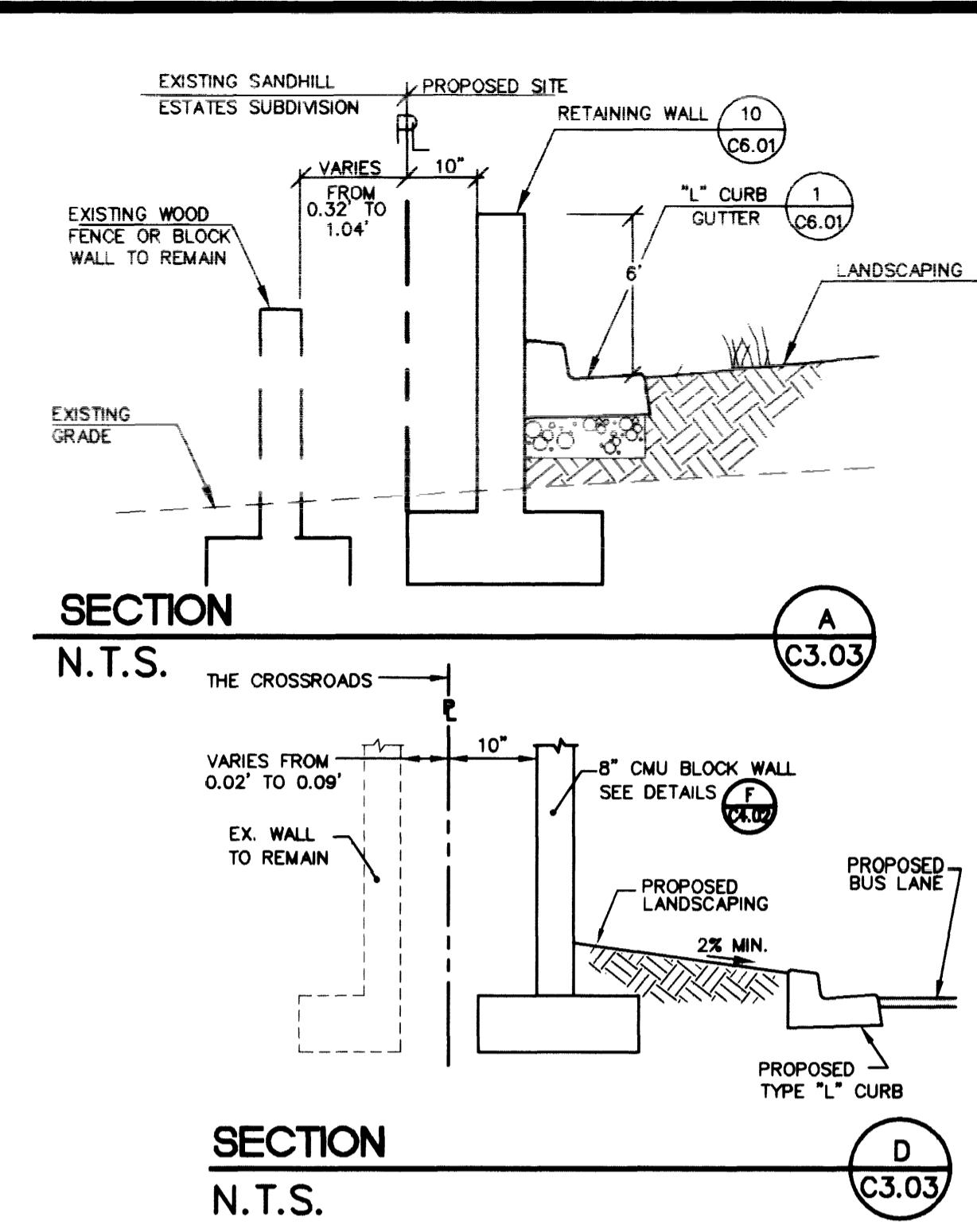
BASIS OF BEARING
 N 00° 40' 10" E BEING THE EAST LINE OF THE NORTHEAST QUARTER (NE 1/4) OF SECTION 31, TOWNSHIP 20 SOUTH, RANGE 82 EAST, M.D.M., SAID LINE ALSO BEING THE CENTERLINE OF LAMB BOULEVARD AS SHOWN ON ALTA/ACSM SURVEY PRODUCED BY CARTER-BURGESS, SIGNED AND STAMPED BY MARK A. BYRD ON 2-11-99.

BENCHMARK
 BM #21, 2L V02 32N W M6, BEING A RIVET AND PLATE IN TOP OF CURB EAST CURB LINE, 1386' NORTH OF STEWART AVE., ACROSS FROM CARPENTERS HALL LOCAL 1780. ELEV: 1771.81' (539.99 M) NAVD88

FLOOD ZONE
 PROPERTY LIES WITHIN F.E.M.A. FLOOD ZONE "X". ZONE "X" IS DESCRIBED AS AREA TO BE OUTSIDE 500-YEAR FLOODPLAIN.

GRADING NOTES

- SLOPES 4:1 OR STEEPER AND FINE-GRAINED MATERIALS THAT HAVE BEEN DISTURBED (SANDY AND SILTY MATERIALS) SHOULD BE PROTECTED WITH BURLAP OR OTHER EROSION CONTROL FABRIC/MATERIAL, UNLESS OTHERWISE SPECIFIED BY LANDSCAPE DRAWINGS AND SPECIFICATIONS OR THE SOILS REPORT.
- CONTRACTOR SHALL DETERMINE HIS OWN FOOTING OR BASEMENT EXCAVATION QUANTITIES, EVEN THOUGH SHOWN ON ROUGH GRADING PLANS. ADDITIONALLY, STRUCTURE BACKFILL COSTS SHOULD BE INCLUDED IN THE COST OF THE STRUCTURE, UNLESS OTHERWISE SPECIFIED IN THE CONTRACT DOCUMENTS.
- CONTRACTOR SHALL NOTIFY LOCHSA ENGINEERING WITHIN 24 HOURS OF OMISSIONS AND ERRORS DISCOVERED ON PLANS. LOCHSA ENGINEERING WILL NOT BE RESPONSIBLE FOR ANY "CORRECTIVE" WORK DONE BY OTHERS.
- CONTRACTOR TO ENSURE POSITIVE DRAINAGE. NO PONDING ALLOWED.
- CONTRACTOR TO FOLLOW RECOMMENDATIONS AS OUTLINED IN THE PROJECT GEOTECHNICAL REPORT, INCLUDING BUT NOT LIMITED TO EXCAVATION, GRADING AND COMPACTION.
- REFER TO LANDSCAPING DRAWINGS FOR PLANTING, IRRIGATION, REMOVAL OF TREES, ETC.



CERTIFY THAT THIS GRADING PLAN CONFORMS TO THE APPROVED DRAINAGE STUDY FOR THIS SITE ON FILE AT THE CITY OF LAS VEGAS.
 Mark A. Hedge 9-7-99
 MARK A. HEDGE, P.E. NO. 8445 DATE

JMA ARCHITECTURE
 4292 SOUTH HARBARD PARKWAY
 2003

LOCHSA ENGINEERING
 5828 Spring Mountain Rd.
 Suite 308
 Las Vegas, Nevada 89146
 Phone (702) 388-9312
 Fax (702) 388-8312

GRADING PLAN 3
WILLIAM K. MOORE
ELEMENTARY SCHOOL

DRAWN BY	9/1/99
DESIGNED BY	9/1/99
CHECKED BY	9/1/99
PROJECT NO.	SCALE: 1" = 30'

MARK A. HEDGE
 REGISTERED PROFESSIONAL ENGINEER
 STATE OF NEVADA
 NO. 8445

Call before you Dig
 1-800-277-2800
 (NEVADA SINCE 1977)

Call before you Overhead
 1-702-543-8111
 (NEVADA SINCE 1977)

SHEET **C3.03**
 8 OF 15 SHEETS
 DRAWING NO. 715-121