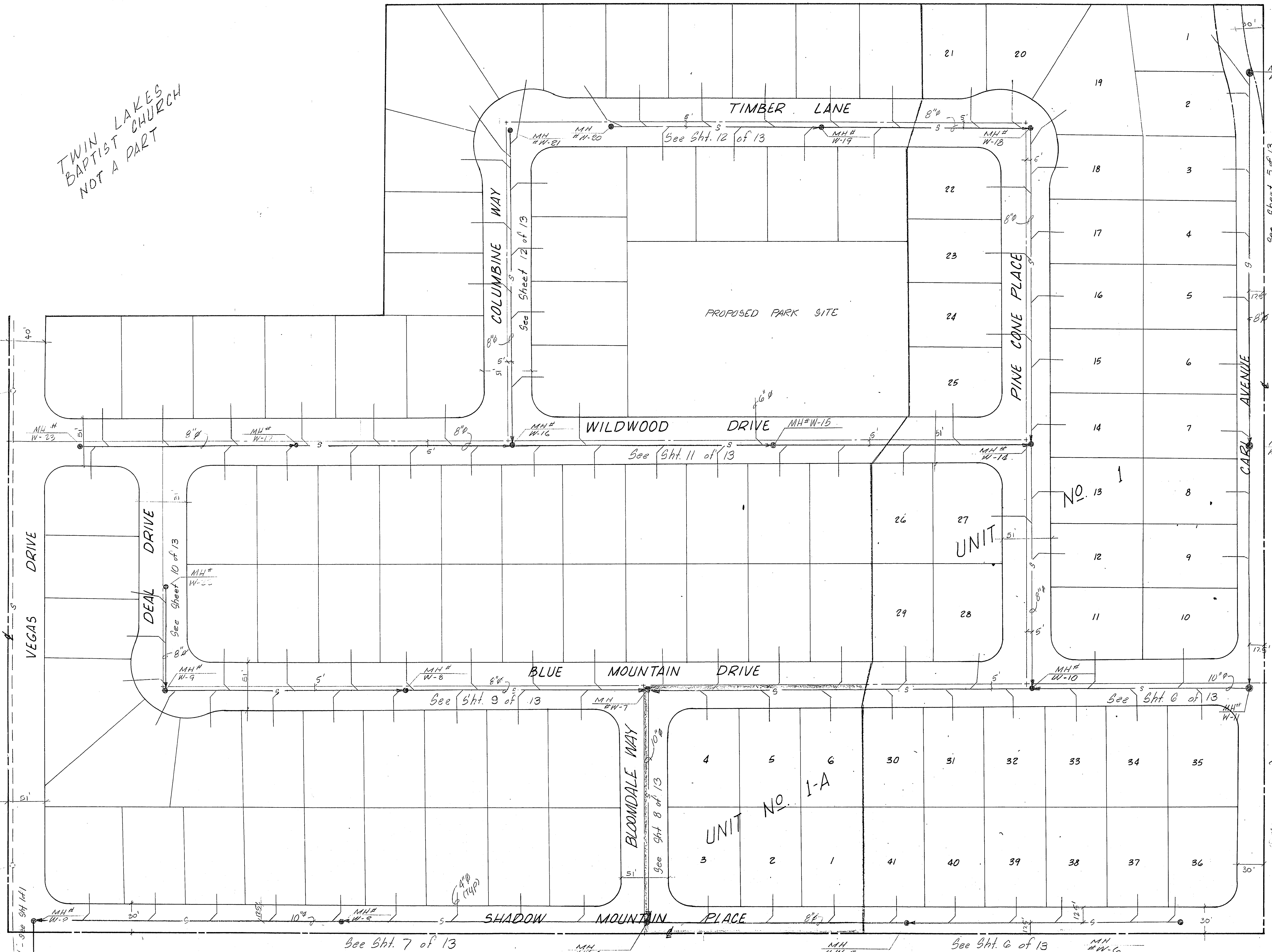
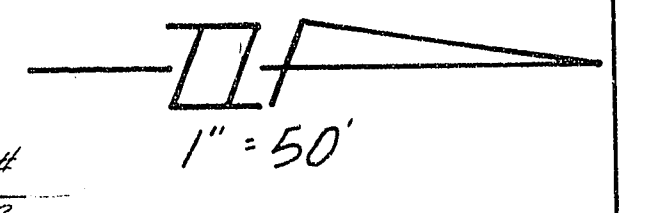


TWIN LAKES BAPTIST CHURCH NOT A PART



ESTIMATED QUANTITIES

ITEM	QUANTITY
UNIT 1	
10" VCP	1978 LF
8" VCP	1935 LF
4" VCP	1353 LF
Manholes	11 Each
UNIT 1-A	
10" VCP	495 LF
8" VCP	230 LF
4" VCP	198 LF
Manholes	2 Each
FUTURE CONST.	
8" VCP	2190 LF
6" VCP	41 LF
4" VCP	2244 LF
Manholes	10 Each

Note:
Contractor shall verify the exact location of existing sewer mains affected by his work prior to commencing construction.

APPROVED BY:

P. E. Anton 8-2-72
Sanitation Supt. Date

J. D. Dicken 8-14-72
Field Engineer Date

James Whelan 7/7/72
District Health Dept Date

[Signature] 8-1-72
City Engineer Date
City of Las Vegas

Submitted By: *Dwight R. Wegart*
Dwight R. Wegart, P.E. No. 2687

General Sewer Notes:
1. All construction to conform to City of Las Vegas Standards.
2. Flow in existing mains affected by new construction, shall be maintained.

REVISIONS		
NO.	DESCRIPTION	DATE
1	Revise Carl Ave	8-9-72

SANITARY SEWER
WILDWOOD SUBDIVISION
MASTER PLAN

Las Vegas, Nevada

SEA CONSULTING ENGINEERS / PLANNERS
SPARKS, NEVADA - SEATTLE, WASHINGTON - LAS VEGAS, NEVADA

JOB NO. 272008
DESIGNED LJB
DRAWN RM
COMP.
CHECKED
DATE MAY 1972
SHEET NO. 4
OF 13 SHEETS