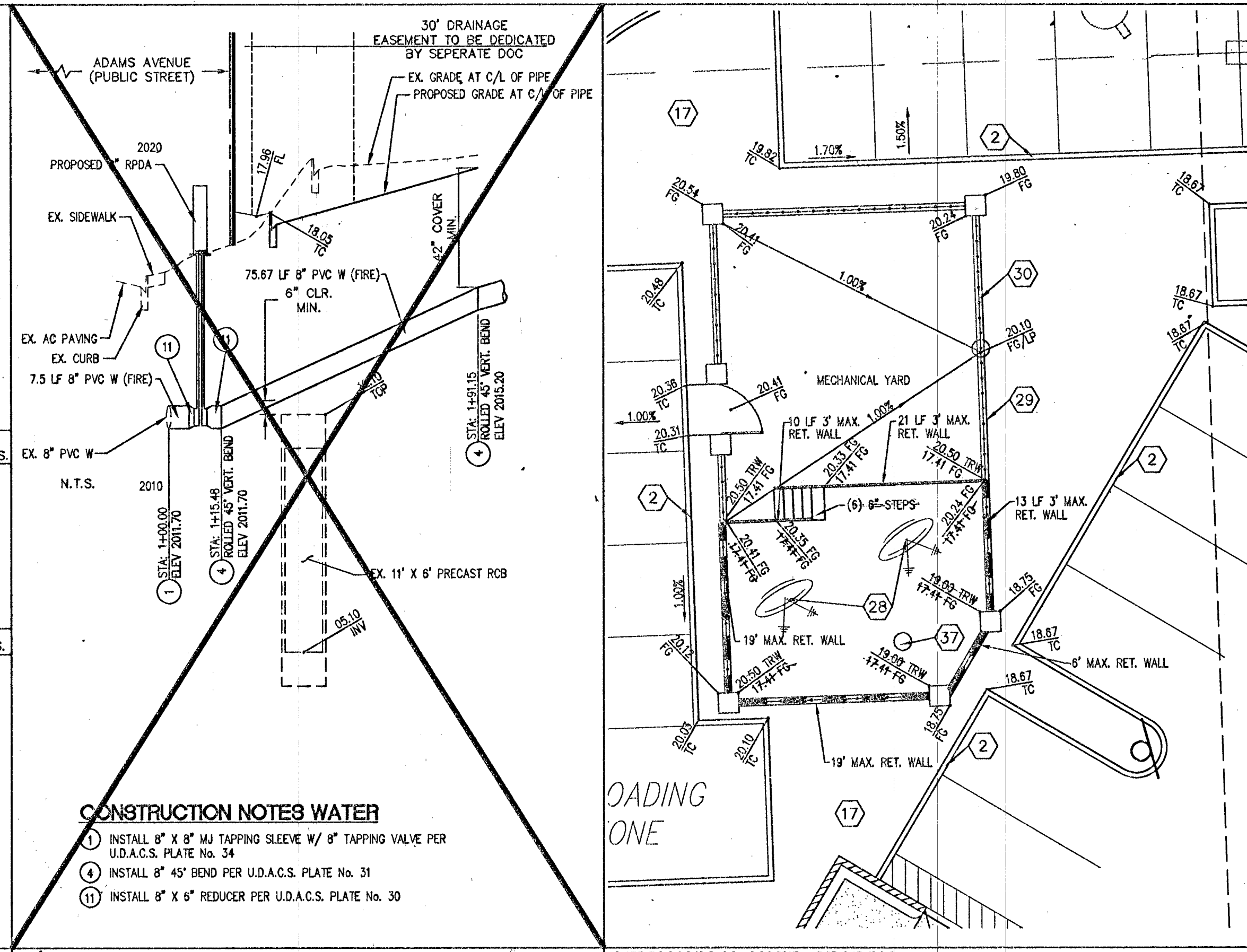


- CONSTRUCTION NOTES**
- CONSTRUCT "L" TYPE CURB & GUTTER PER C.C.A.U.S.D. No. 216
 - CONSTRUCT ONSITE "A" CURB PER DETAIL ON SHEET C6.00
 - CONSTRUCT FLUME PER DETAIL ON SHEET C6.00
 - INSTALL 4" CONCRETE SIDEWALK PER C.C.A.U.S.D. No. 234
 - INSTALL 2.5" AC PAVEMENT OVER 4" TYPE II AGG. BASE OVER 6" STRUCTURAL FILL (PARKING AREAS)
 - INSTALL 3" AC PAVEMENT OVER 9" TYPE II AGG. BASE OVER 6" STRUCTURAL FILL
 - CONSTRUCT CASE II SIDEWALK RAMP PER C.C.A.U.S.D. No. 235 & DETAIL ON SHEET C6.01
 - CONSTRUCT CASE I SIDEWALK RAMP PER C.C.A.U.S.D. No. 235
 - CONSTRUCT SIDEWALK RAMP "A" PER DETAIL ON SHEET C6.00
 - INSTALL 3" CONCRETE VALLEY GUTTER PER DETAIL ON SHEET C6.00
 - CONSTRUCT 8" CONCRETE VALLEY GUTTER PER C.C.A.U.S.D. No. 228
 - TIP OUT "L" CURB PER DETAIL ON SHEET C6.00
 - CONSTRUCT TRASH ENCLOSURE PER ARCHITECTURAL PLANS
 - INSTALL 7" CONCRETE PAVING OVER 6" TYPE II OVER 6" STRUCT. FILL
 - CONSTRUCT SIDEWALK UNDERDRAIN PER C.C.A.U.S.D. No. 236
 - SAW CUT AND MATCH EXISTING AC
 - LANDSCAPED/HARDSCAPE AREA - SEE LANDSCAPE PLANS
 - INSTALL GATE PER ARCHITECTURAL PLANS
 - INSTALL PERIMETER FENCE PER ARCHITECTURAL PLANS
 - SEE PLUMBING PLANS FOR ROOF DRAINS
 - ADJUST EXISTING RIMS TO GRADE
 - INSTALL BOLLARDS PER ARCHITECTURAL PLANS
 - REMOVE EXISTING 2 LF 18" RCP SD & INSTALL 3 LF 18" RCP @ 30%
 - INSTALL CURB OPENING PER DETAIL ON SHEET C6.00
 - OUTLET PER DETAIL ON SHEET C6.00
 - INSTALL ZURN "Z886 6" PERMATRENCH" TRENCH DRAIN WITH "DOG" ADA RATED MEDIUM DUTY GRATE
 - MECHANICAL YARD - SEE ENLARGED GRADING PLAN ON SHEET C6.00
 - RELOCATED SATELLITE DISH
 - INSTALL CROSS BLOCK PER DETAIL ON SHEET C6.00
 - INSTALL SCREEN WALL PER ARCHITECTURAL PLANS
 - INSTALL 3" x 6" DROP INLET & H20 GRATE PER DETAIL ON SHEET C6.02
 - INSTALL MODIFIED 4" CONCRETE SIDEWALK PER CCAUSD #234 & DETAIL ON SHEET C6.01
 - PATIO - SEE ARCHITECTURAL PLANS
 - EX. 10" STORM DRAIN DROP INLET - PROTECT IN PLACE
 - EX. 3" STORM DRAIN DROP INLET - PROTECT IN PLACE
 - EX. 24" STORM DRAIN DROP INLET - PROTECT IN PLACE
 - INSTALL DRY WELL PER DETAIL ON SHEET C6.00
 - INSTALL TYPE I SIDEWALK PER N.D.O.T. STD. DWG. R. 5.2
 - EXISTING COX PULL-BOX TO BE PROTECTED-IN-PLACE
 - EXISTING POWER POLE TO BE PROTECTED-IN-PLACE



WRIGHT
engineers

1635 VILLAGE CENTER CIRCLE, SUITE 200
LAS VEGAS, NV 89154
P 702.933.7000 F 702.933.7001
WWW.WRIGHTENGINEERS.COM

REV	DATE	BY	REVISION

CITY OF LAS VEGAS
DEPARTMENT OF PUBLIC WORKS
400 E. STEWART AVENUE
LAS VEGAS, NV 89001
TEL (702) 228-6535 FAX (702) 382-3232

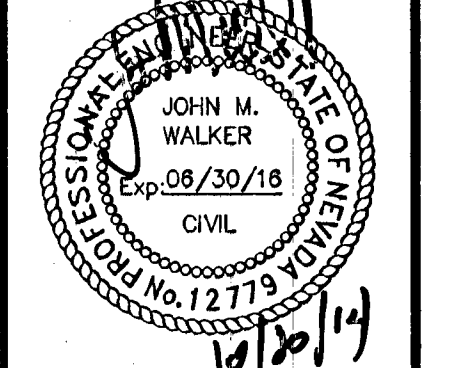
CITY OF LAS VEGAS
WESTSIDE SCHOOL HISTORIC REHABILITATION

CHECK NO. 1
CHECK NO. 2

DATE: _____
DATE: _____

SECTIONS AND DETAILS

DATE: 10/20/14
DRAWN BY: C/L
PROJECT MGR: JMW
PROJECT NO: 112338
SCALE: N.T.S.



SHEET
C6.00
7 OF 9 SHEETS
DRAWING NO.
10716324

#55904