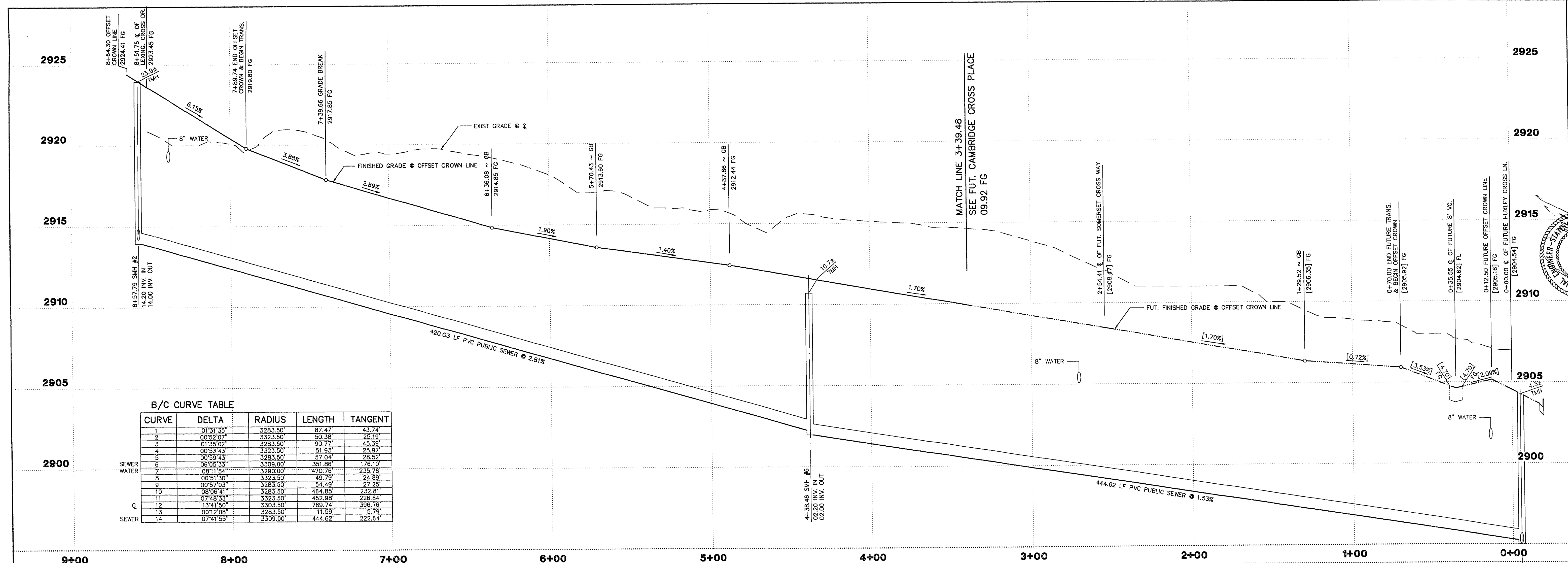
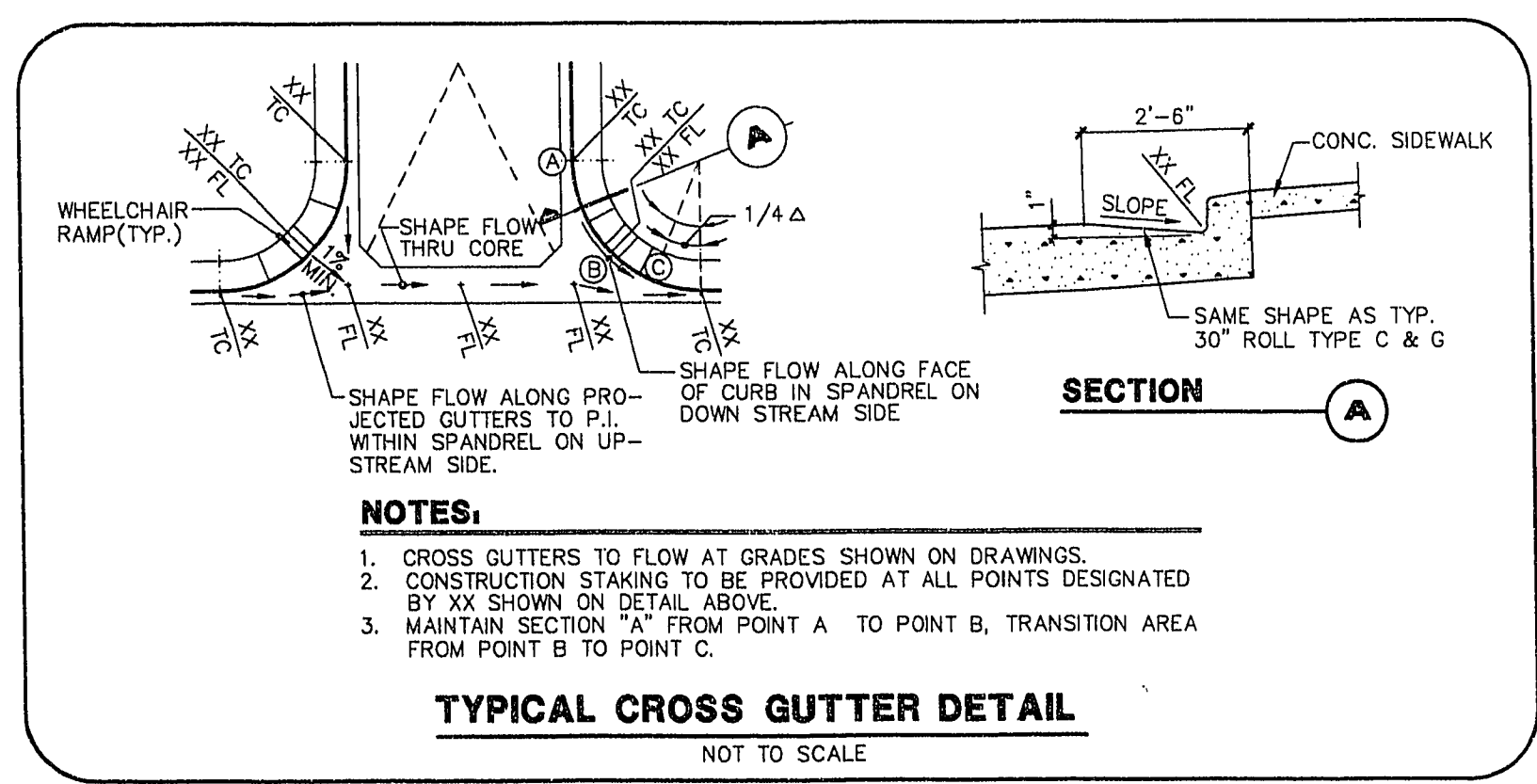


JOB NO. 6627.0210

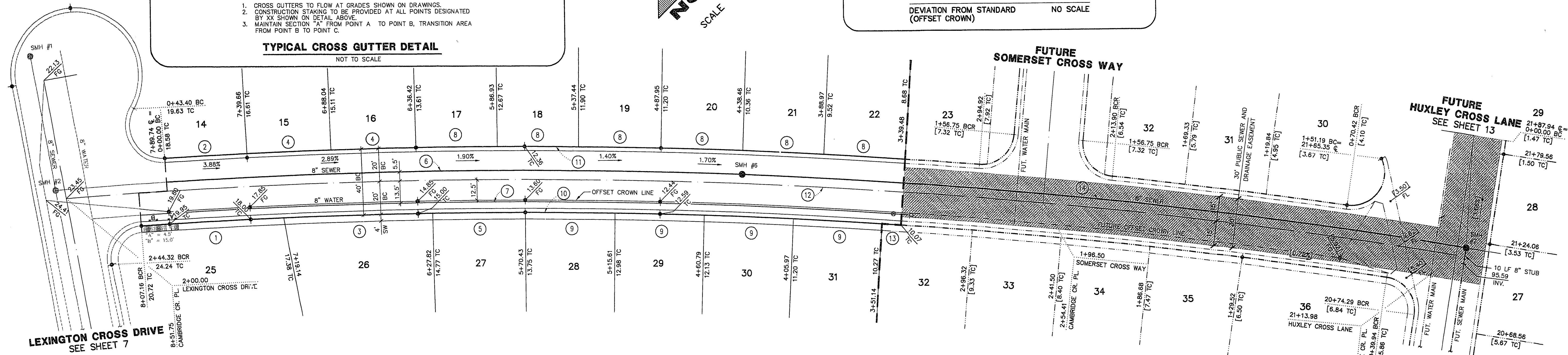
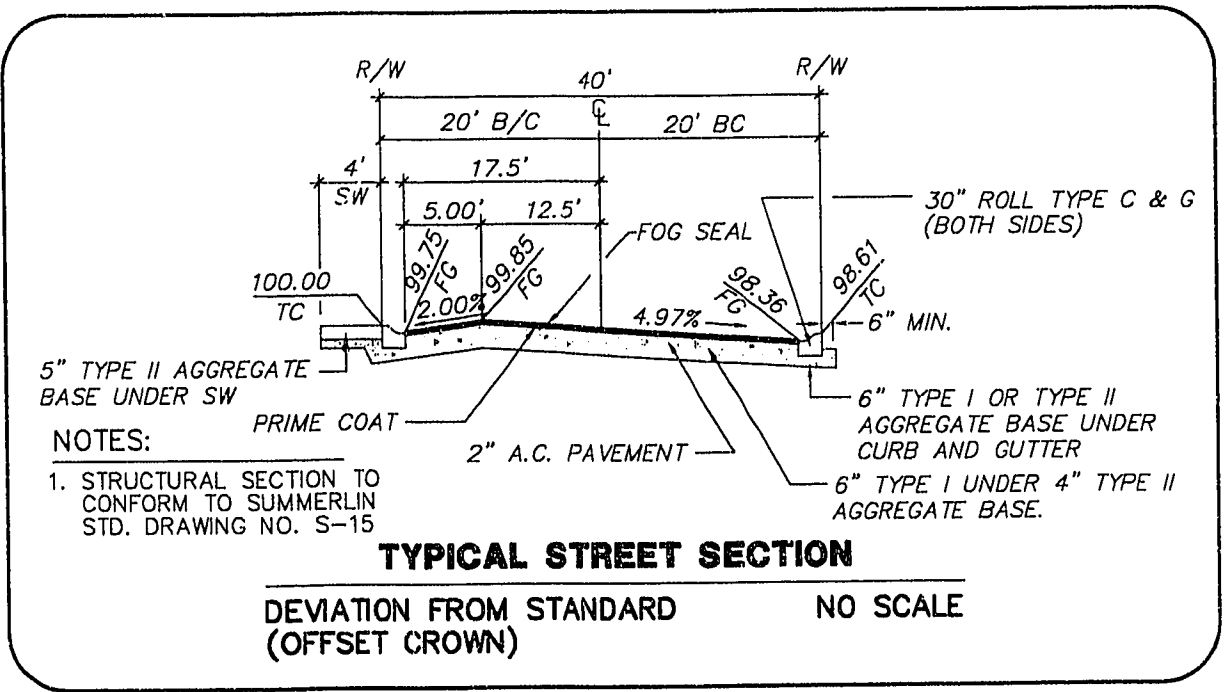
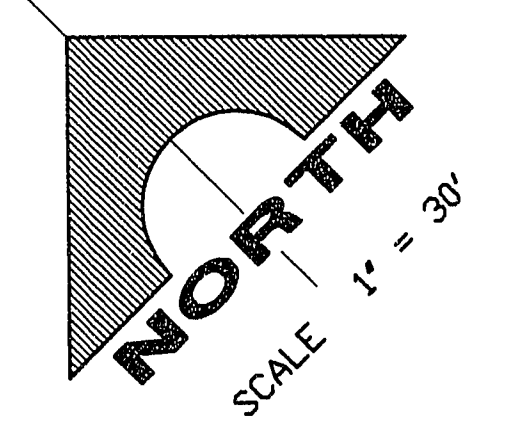


**B/C CURVE TABLE**

CURVE	DELTA	RADIUS	LENGTH	TANGENT
1	01°31'35"	3283.50'	87.47'	43.74'
2	00°50'00"	3323.50'	80.38'	25.19'
3	01°35'02"	3283.50'	90.77'	45.39'
4	00°53'43"	3323.50'	51.93'	25.97'
5	00°59'43"	3283.50'	57.04'	28.52'
6	08°09'33"	3509.00'	351.88'	176.10'
7	08°11'54"	3290.00'	470.76'	235.78'
8	00°51'30"	3323.50'	49.79'	24.89'
9	00°57'03"	3283.50'	54.49'	27.55'
10	08°06'41"	3283.50'	484.85'	232.81'
11	07°49'33"	3323.50'	452.98'	226.84'
12	13°41'50"	3503.50'	789.74'	386.76'
13	00°12'08"	3283.50'	11.59'	5.79'
14	07°41'55"	3309.00'	444.62'	222.84'

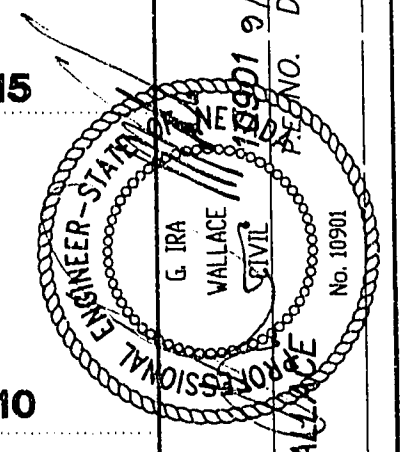


**PLAN AND PROFILE**  
SCALE: HOR. 1" = 30'  
VERT. 1" = 3'



**CAMBRIDGE CROSS PLACE**

REV.	DATE	DESCRIPTION
1	9/14/95	ISSUED FOR PERMITS
2	9/14/95	REVISED PER COMMENTS



RECOMMENDED  
G. IRA WALLACE  
No. 1091

G. C. WALLACE, INC.  
Engineering/Architecture  
1555 SOUTH RAINBOW BLVD., LAS VEGAS, NEVADA 89102

PARDEE CONSTRUCTION COMPANY  
WESTRIDGE AT SUMMERLIN - PHASE I  
CAMBRIDGE CROSS PLACE

SHEET  
**6**

CAMB-1.DWG  
08/24/95 GSW/P  
OF 13 SHEETS

11-24-38 107Y-4417-1