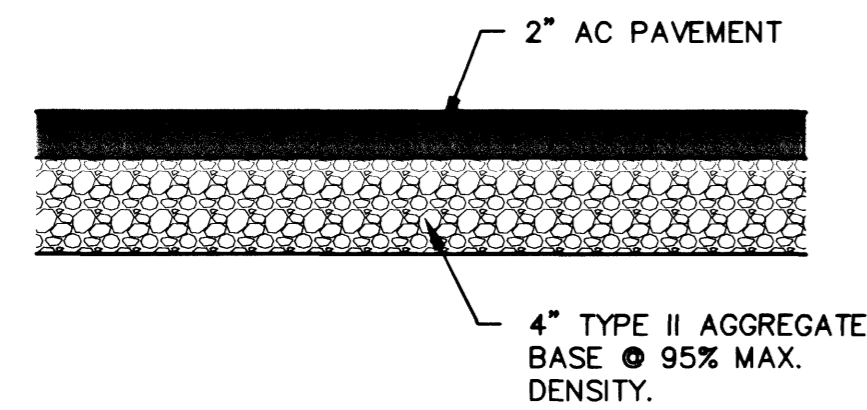
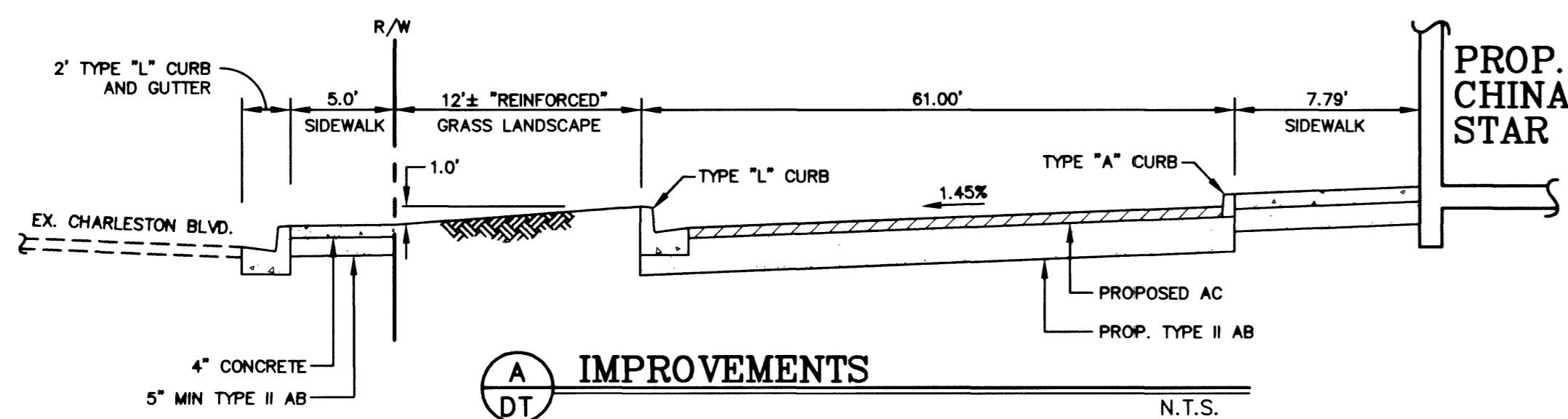


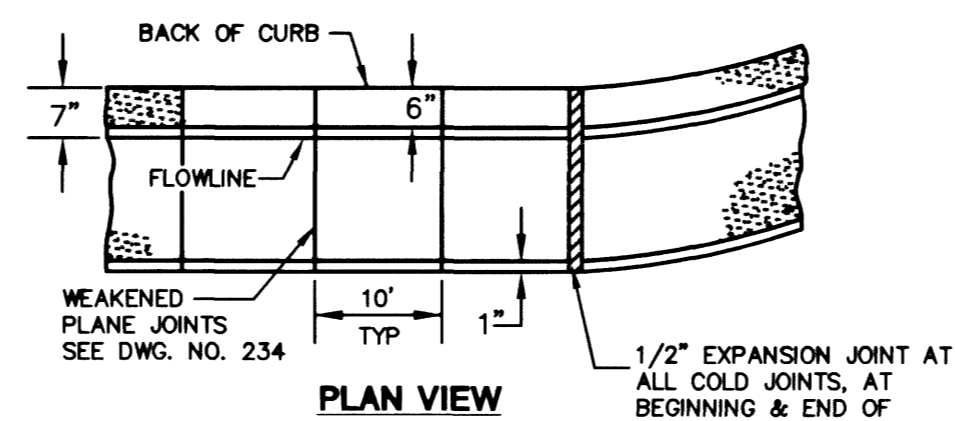
2 "A" TYPE CURB
 DT DETAIL REFER TO CLARK COUNTY AREA STD. DWG. 219 FOR ADDITIONAL DETAILS N.T.S.



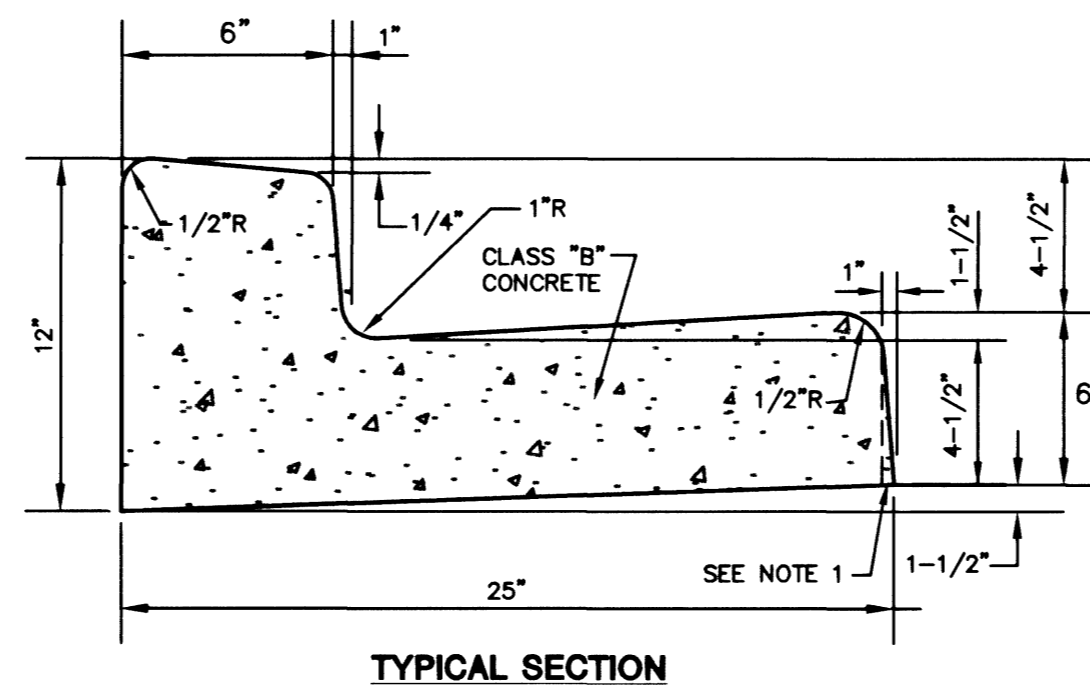
3 AC PAVEMENT - ON SITE
 DT DETAIL N.T.S.



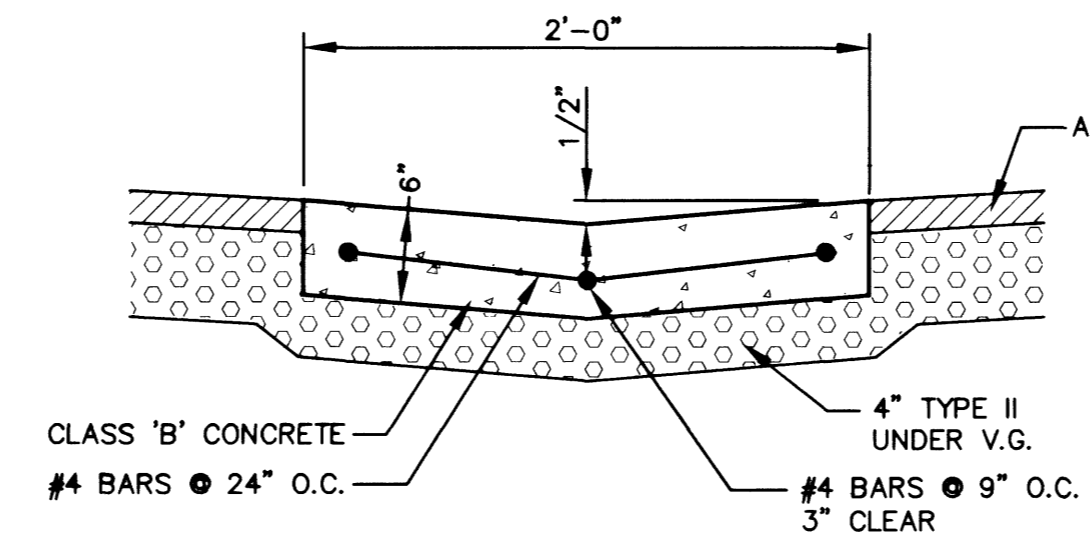
A IMPROVEMENTS
 DT N.T.S.



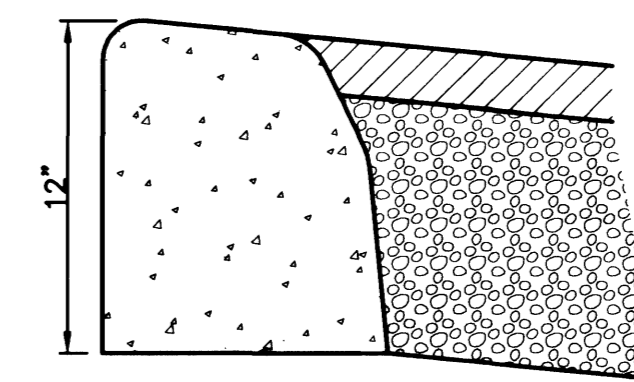
- NOTES**
- 1" BATTER ON GUTTER FACE OPTIONAL.
 - WHERE LONGITUDINAL SLOPE IS LESS THAN 0.4% THE FLOW LINE SHALL BE WATER TESTED.



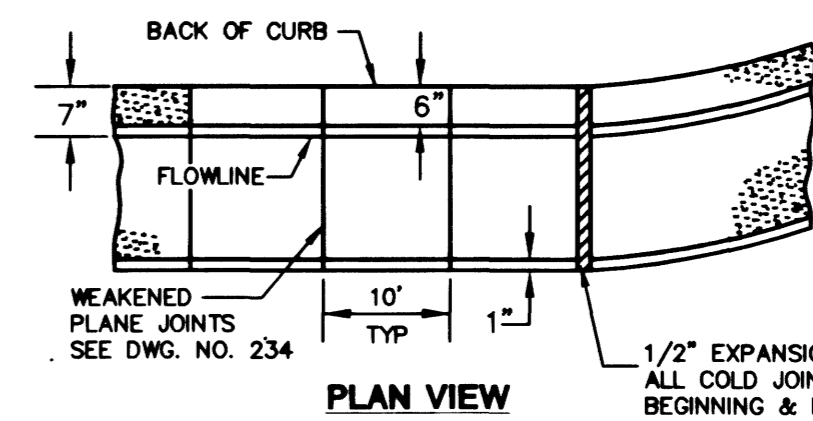
1 "L" TYPE CURB AND GUTTER
 DT DETAIL REFER TO CLARK COUNTY AREA STD. DWG. 216 FOR ADDITIONAL DETAILS N.T.S.



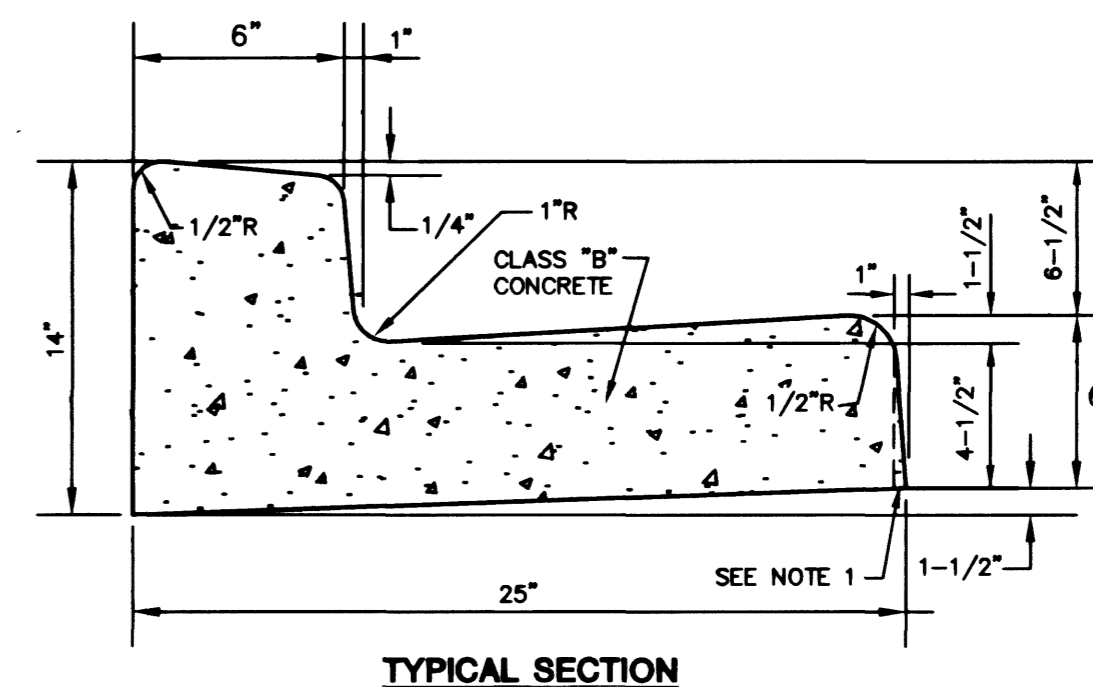
6 2' CONCRETE VALLEY GUTTER
 DT DETAIL N.T.S.



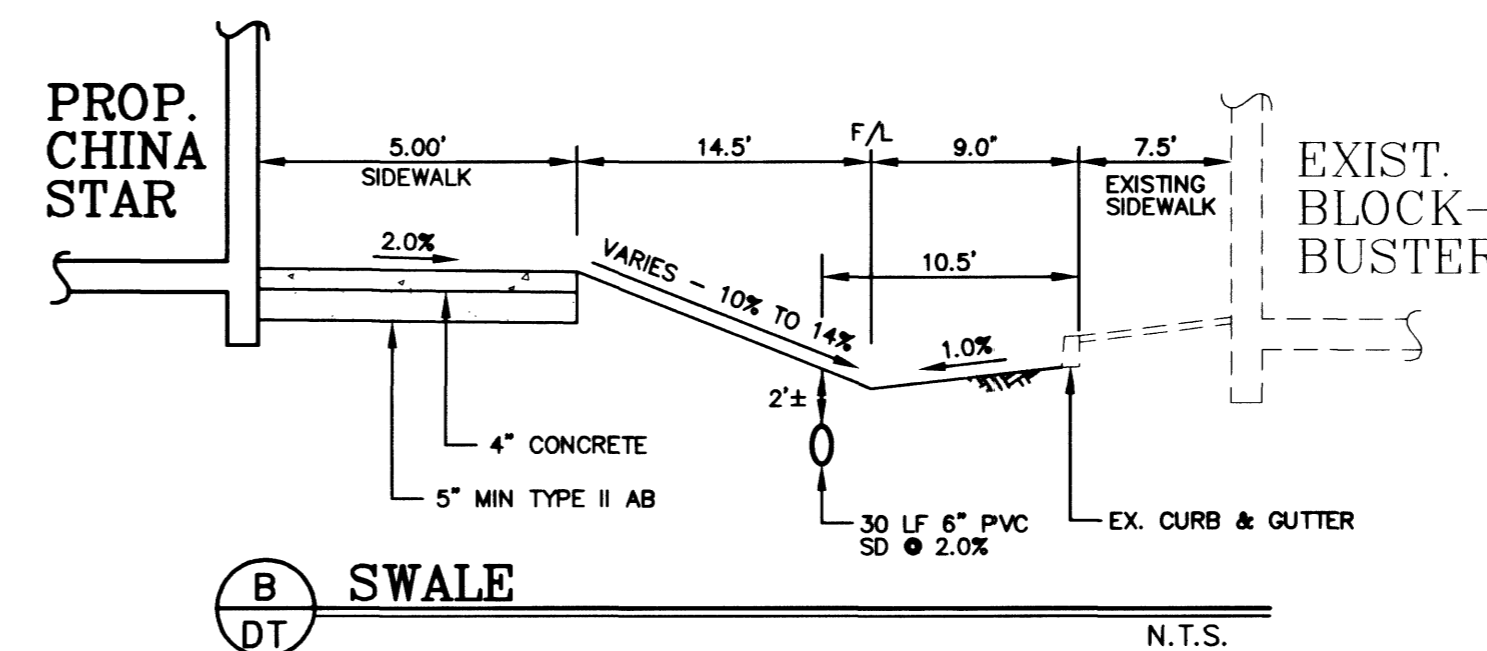
5 "A" TYPE CURB (AC TO GRADE)
 DT DETAIL REFER TO CLARK COUNTY AREA STD. DWG. 219 FOR ADDITIONAL DETAILS N.T.S.



- NOTES**
- 1" BATTER ON GUTTER FACE OPTIONAL.
 - WHERE LONGITUDINAL SLOPE IS LESS THAN 0.4% THE FLOW LINE SHALL BE WATER TESTED.



1 "L" TYPE CURB AND GUTTER
 DT DETAIL W/8" CURB FACE REFER TO CLARK COUNTY AREA STD. DWG. 216 FOR ADDITIONAL DETAILS N.T.S.



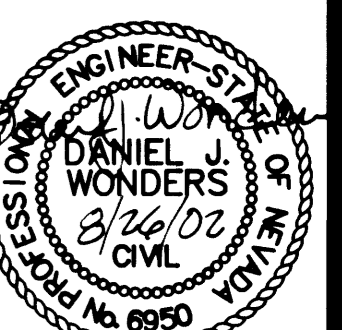
B SWALE
 DT N.T.S.

WEINGARTEN REALTY INVESTORS
 3101 N. CENTRAL AVE., SUITE 990
 PHOENIX, AZ 85012
 PHONE: (602) 263-8852

Kimley-Horn and Associates, Inc.
 Engineering, Planning, and Environmental Consultants
 1050 East Flamingo Road
 Suite 5-210
 Las Vegas, Nevada 89119
 Tel. No. (702) 734-5666
 Fax No. (702) 735-4349

CHINA STAR RESTAURANT
OF WESTLAND FAIR
 LAS VEGAS, NV

DRAWN BY: ARC 8/27/02
 DESIGNED BY: DJW 8/27/02
 CHECKED BY: DJW 8/27/02
 PROJECT NO.: 092417000
 SCALE: 1" = 20'



EXPIRES: 06/30/04
 SHEET DT
 09 OF 09 SHEETS
 DRAWING NO. 107-V3619

SAFETY ALERT
 Call Before You Overhead
 1-702-593-6111
 1-800-227-2600

Avoid cutting underground utility lines. It's costly.
Call before you Dig