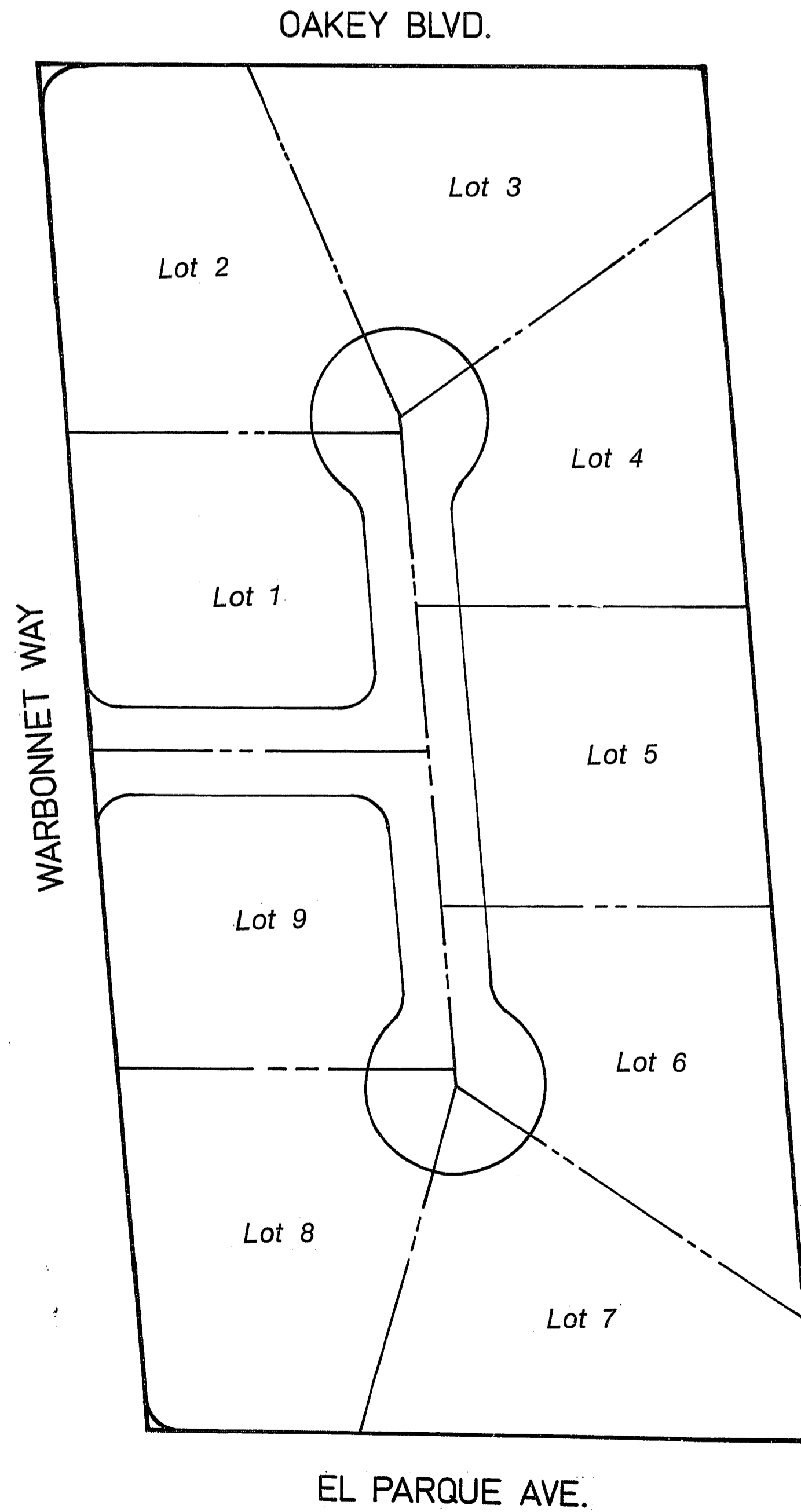


1989

# IMPROVEMENT PLANS WESTLAKE OAKLEY 2 ESTATES



APPROVALS

*[Signature]* 7-8-89  
LAS VEGAS VALLEY WATER DISTRICT DATE

*[Signature]* 7-17-89  
NEVADA POWER COMPANY DATE

*[Signature]* 8/14/89  
CITY OF LAS VEGAS - FIRE MARSHALL DATE

*[Signature]* 10/12/89  
CITY OF LAS VEGAS - CITY ENGINEER DATE

SHEET INDEX

Sheet #	Title
1	Title Sheet
2	Grading Plan
3	Improvement & Utility Plan (Oakey Blvd.)
4	Improvement & Utility Plan (El Parque)
5	Improvement & Utility Plan (Warbonnet Way)
6	Improvement & Utility Plan (Onsite)

Job No.: 7060.095  
Sheet: 1 of 6

Scale: No Scale

Drawn by	Date
Checked by	Date
Designed by	Date

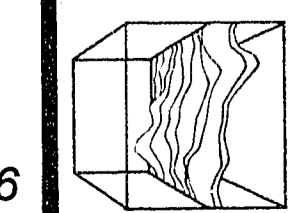
Date	Ini.	Revisions

TITLE SHEET

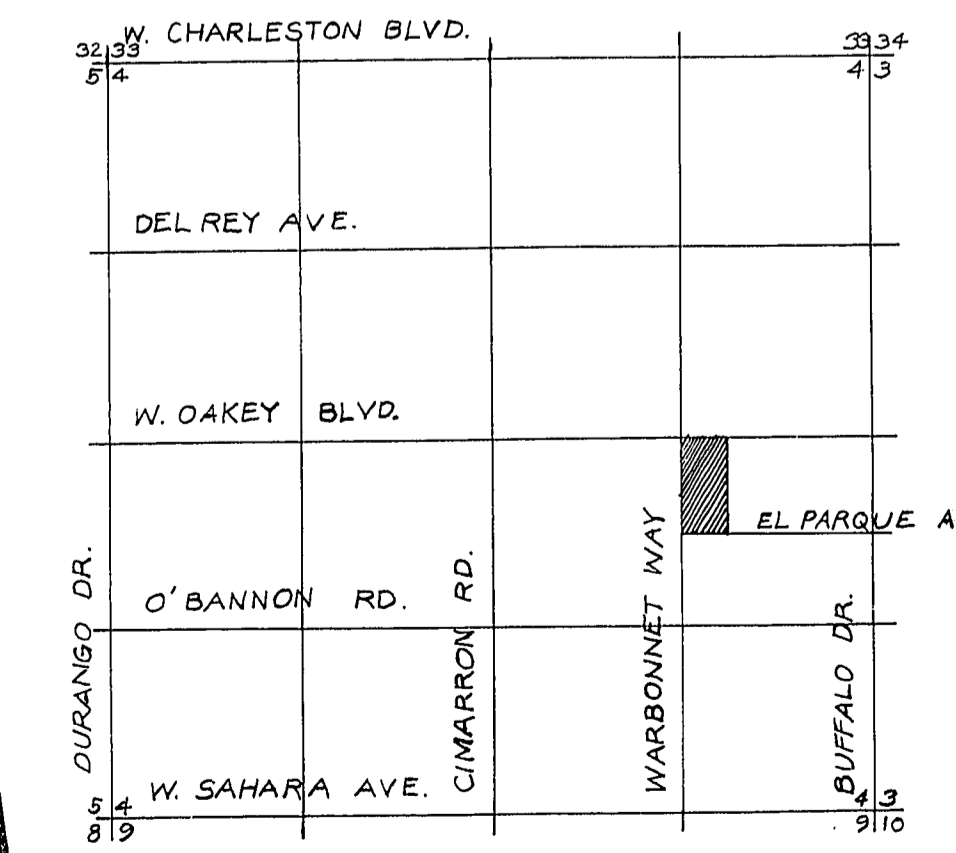
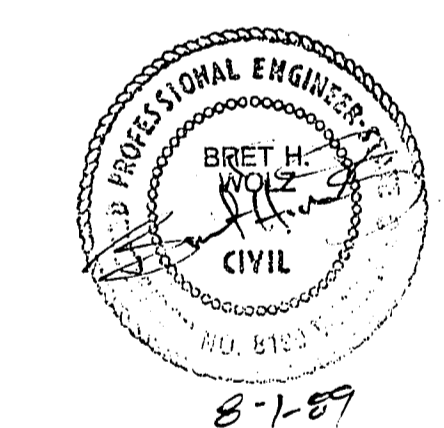
Westlake Oakley 2  
Estates

Prepared by the office of  
**Church Engineering, Inc.**  
 Consulting Engineers  
 Planners  
 Surveyors

2011 Main Ave.  
 Las Vegas, NV 89102  
 (702) 876-8020



Name of Plan: WESTLAKE OAKLEY 2  
 Water plan as shown will be acceptable.  
 It is NOT approved for construction.  
*7060* 7-18-89  
 LIVED SHEET 6 ONLY Date



VICINITY MAP  
Not to scale

107Y-4068  
VOID