

**NOTE:**  
TRENCH AND BACKFILL PER USD No. 5038

**10' WATERLINE PROFILE SOUTH OF SILVER SKY DRIVE CENTERLINE**

**WATER MAIN JOINT DEFLECTION (PVC, 4'-24')**  
PVC PIPE SHALL BE DEFLECTED AT THE JOINT ONLY. THE MAXIMUM ALLOWABLE DEFLECTION SHALL BE ONE (1) DEGREE PER JOINT WITH A MINIMUM RADIUS OF CURVATURE OF 1,150 FEET, PER UDACS 2.07.01 AND 2.07.02. FOR CHANGES IN DIRECTION EXCEEDING THE MAXIMUM ALLOWABLE JOINT DEFLECTION, FITTINGS SHALL BE USED.

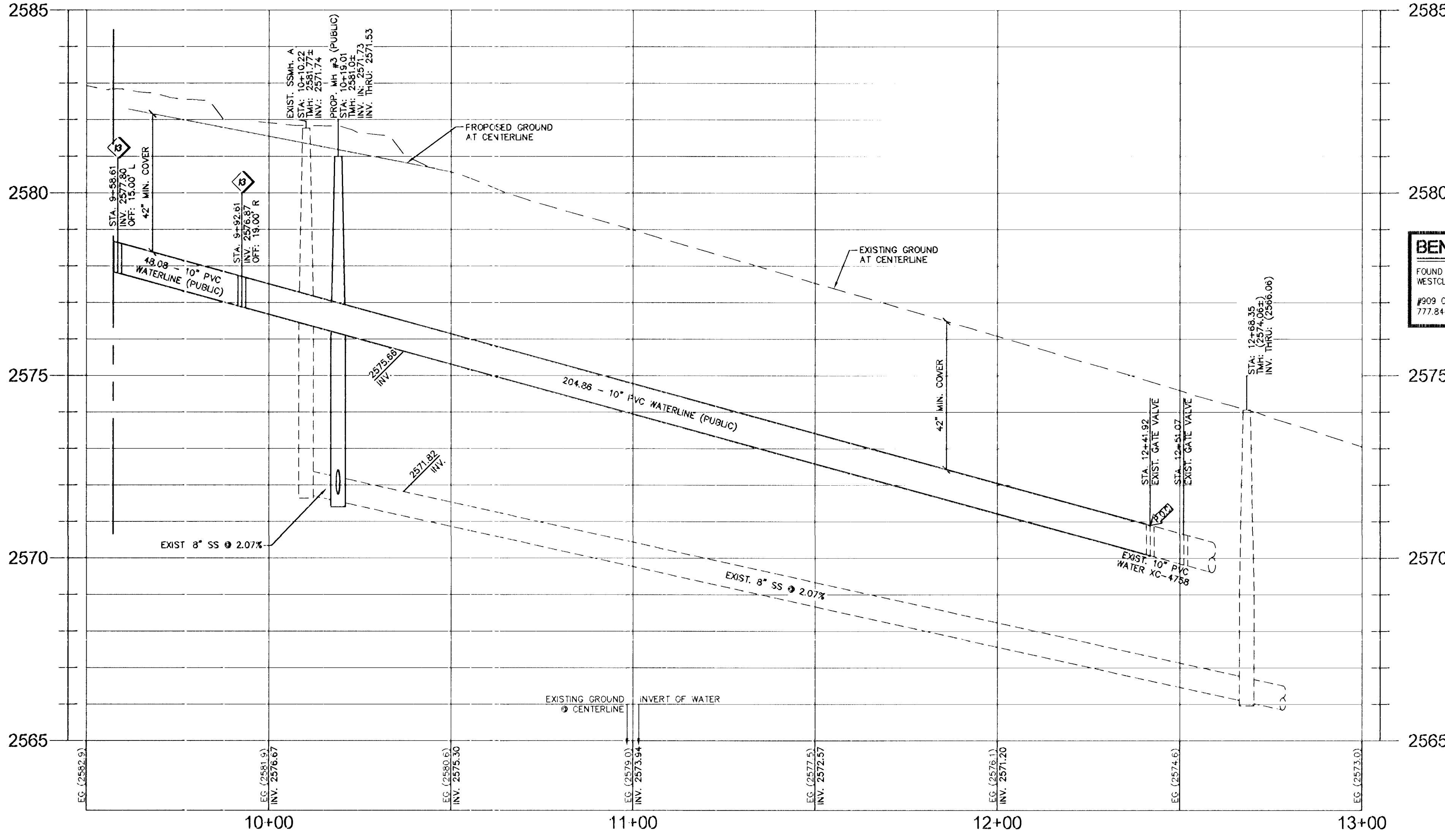
**WATER CONSTRUCTION NOTES**

1. INSTALL FIRE HYDRANT ASSEMBLY (INCL. TEE, VALVE, LATERAL, RISER, THRUST BLOCKS, AND ALL ASSORTED HARDWARE) PER UDACS PLATE 40
2. INSTALL BLUE REFLECTIVE RAISED PAVEMENT MARKERS AT FIRE HYDRANTS
3. INSTALL 10" GATE VALVE UDACS PLATE 30 & 39
4. INSTALL 4" 90° BEND
5. INSTALL 10" PVC DOMESTIC WATER PROVIDE 42" COVER ABOVE TOP OF PIPE BASED ON FG UDACS 17 & 19
6. INSTALL 10" TAPPING SLEEVE AND 10" TAPPING VALVE PER UDACS PLATE 34 SECTION 2.24.01A
7. INSTALL 2" METER UDACS PLATE 4
8. INSTALL 2" RPPA UDACS PLATE 8
9. INSTALL 10" RPPA UDACS PLATE 59 MUST USE MATTS, 909 MODEL
10. INSTALL 10"x10" TEE UDACS PLATE 31
11. INSTALL 12" 90° BEND UDACS PLATE 31
12. INSTALL 2" SERVICE SADDLE PER UDACS PLT 4
13. INSTALL 10" 45° BEND UDACS PLATE 31
14. INSTALL 10"x6" TEE UDACS PLATE 31
15. INSTALL 8" PVC FIRE WATER PROVIDE 42" COVER ABOVE TOP OF PIPE BASED ON FG UDACS 17 & 19
16. INSTALL 12" 45° BEND UDACS PLATE 31
17. INSTALL 12" PVC DOMESTIC WATER PROVIDE 42" COVER ABOVE TOP OF PIPE BASED ON FG UDACS 17 & 19
18. INSTALL 12" GATE VALVE UDACS PLATE 30 & 39
19. INSTALL 12"x10" REDUCER UDACS PLATE 30
20. INSTALL WATER CROSSING PER DETAIL 16 SHEET 7 AND PER UDACS PLATE 22 AND 23
21. INSTALL 10"x8" TEE UDACS PLATE 31

**NOTE:**

1. ALL ABOVE GROUND UTILITY APPURTENANCES SHALL CONFORM TO THE REQUIREMENTS OF TITLE 19.08.010
2. INSTALL PIPELINE MARKER BALLS IN TRENCH ABOVE EACH HORIZONTAL ELBOW FITTING, PER UDACS PLATE No. 15.
3. ALL SEWER/STORM DRAINS CROSSING WATER LINES MUST CONFORM TO SECTION 2.22 OF THE UNIFORM DESIGN AND CONSTRUCTION STANDARDS FOR POTABLE WATER SYSTEMS (UDACS) FOR WATER AND STORM MAIN CROSSINGS AND CLEARANCES.

**BASIS OF BEARING**  
NORTH 88°31'18" EAST, BEING THE BEARING OF THE SOUTH LINE OF THE NORTHWEST QUARTER (NW 1/4) OF THE SOUTHWEST QUARTER (SE 1/4) OF THE SOUTHWEST QUARTER (SW 1/4) OF SECTION 28, TOWNSHIP 20 SOUTH, RANGE 60 EAST, M.D.M., AS SHOWN ON A MAP ON FILE IN THE CLARK COUNTY, NEVADA RECORDER'S OFFICE AS FILE 109, PAGE 2 OF PARCEL MAPS.



**PROFILE SCALES**  
HORIZ. = 1"=20'  
VERT. = 1"=2'

**BENCHMARK**  
FOUND RIVET AND PLATE IN THE TOP OF CURB AT THE NW CORNER OF WESTCLIFF AND CIMARRON  
#209 OLWOOD 2854  
777.844 (m) 2551.98 (ft)

**APPROVAL**  
*Don Woods*  
LAS VEGAS VALLEY WATER DISTRICT ENGINEERING SERVICES MANAGER  
DATE 10/26/13 PROJECT No. 117341

**DISCLAIMER NOTE**  
UTILITY LOCATIONS SHOWN HEREIN ARE APPROXIMATE ONLY. IT SHALL BE THE CONTRACTOR'S RESPONSIBILITY TO DETERMINE THE EXACT HORIZONTAL AND VERTICAL LOCATION OF ALL EXISTING UNDERGROUND AND OVERHEAD UTILITIES PRIOR TO COMMENCING CONSTRUCTION. NO REPRESENTATION IS MADE THAT ALL EXISTING UTILITIES ARE SHOWN HEREON. THE ENGINEER ASSUMES NO RESPONSIBILITY FOR UTILITIES NOT SHOWN OR UTILITIES NOT SHOWN IN THEIR PROPER LOCATION.

Call before you Dig  
Avoid cutting underground utility lines. It's costly.  
**Call 811**  
OR  
1-800-227-2600  
AND  
CLARK COUNTY TRAFFIC OPERATIONS  
1-702-455-7544

Avoid overhead power line contact.  
**CALL BEFORE YOU DIG OVERHEAD**  
1-702-227-2929  
NEVADA POWER ENVIRONMENT AND SAFETY SERVICES DEPARTMENT

AVOID HITTING UNDERGROUND TRAFFIC SIGNAL SYSTEMS AND STREET LIGHT SYSTEM CONDUITS. IT'S COSTLY!  
**CALL BEFORE YOU DIG UNDERGROUND**  
before you Call Underground  
1-702-455-7511  
CLARK COUNTY TRAFFIC OPERATIONS  
1-702-432-5300  
LAS VEGAS AREA COMPUTERIZED TRAFFIC SYSTEM

REV. NO. / REVISION DESCRIPTION

**NEVADA HAND.**  
240 EAST WASH SPRINGS ROAD SUITE 101  
LAS VEGAS, NEVADA 89110-2212  
TEL: (702) 738-3000 CONTACT: ROBERT FOLESIAN

**L.R. NELSON CONSULTING ENGINEERS, INC.**  
6765 West Russell Road  
Suite 200  
Las Vegas, NV 89118  
(702) 798-7978  
(702) 451-2296 FAX

**OFFSITE WATER LINE PLAN and PROFILE 1**

**WESTCLIFF PINES 2**

**ROLAND WILEY ROAD and SILVER SKY DRIVE**  
CITY OF LAS VEGAS

SHEET 12  
DRAWN BY: TP  
DESIGNED BY: TP  
CHECKED BY: RT  
PROJECT NO.: 117341-113  
SCALE: 1"=20'

DATE 10/26/13

117341-113

10 of 20 SHEETS  
OLV DRAWING NO. 107152282-2