

BASIS OF BEARING
NORTH 88°31'18" EAST, BEING THE BEARING OF THE SOUTH LINE OF THE NORTHWEST QUARTER (NW 1/4) OF THE SOUTHWEST QUARTER (SW 1/4) OF SECTION 28, TOWNSHIP 20 SOUTH, RANGE 60 EAST, M.D.M., AS SHOWN ON A MAP ON FILE IN THE CLARK COUNTY, NEVADA RECORDER'S OFFICE AS FILE 109, PAGE 2 OF PARCEL MAPS.

WATER MAIN JOINT DEFLECTION (PVC, 4"-24")
PVC PIPE SHALL BE DEFLECTED AT THE JOINT ONLY. THE MAXIMUM ALLOWABLE DEFLECTION SHALL BE ONE (1) DEGREE PER JOINT WITH A MINIMUM RADIUS OF CURVATURE OF 1,150 FEET. PER UDACS 2.07.01 AND 2.07.02. FOR CHANGES IN DIRECTION EXCEEDING THE MAXIMUM ALLOWABLE JOINT DEFLECTION, FITTINGS SHALL BE USED.

NOTE:
1. ALL ABOVE GROUND UTILITY APPURTENANCES SHALL CONFORM TO THE REQUIREMENTS OF TITLE 19.08.010
2. INSTALL PIPELINE MARKER BALLS IN TRENCH ABOVE EACH HORIZONTAL ELBOW FITTING, PER UDACS PLATE No. 15.
3. ALL SEWER/STORM DRAINS CROSSING WATER LINES MUST CONFORM TO SECTION 2.22 OF THE UNIFORM DESIGN AND CONSTRUCTION STANDARDS FOR POTABLE WATER SYSTEMS (UDACS) FOR WATER AND STORM MAIN CROSSINGS AND CLEARANCES.

REDUCED PRESSURE DETECTOR ASSEMBLY (RPDA) (2) 10"
THE REDUCED PRESSURE DETECTOR ASSEMBLIES SHALL BE INSTALLED IN ACCORDANCE WITH THE UDACS PLATE No. 59. ANY BLOCK WALL OR OTHER FENCE MATERIAL SHALL BE DESIGNED AND CONSTRUCTED AROUND THE OUTSIDE OF THE EASEMENTS(S) SO AS TO FOLLOW THE DISTRICT DIRECT ACCESS FROM THE ADJACENT RIGHT-OF-WAY. EASEMENTS SHALL BE CLEARLY MARKED OR STAKED PRIOR TO THE START OF CONSTRUCTION.

REDUCED PRESSURE PRINCIPLE ASSEMBLY (2) 2"
APPROVED REDUCED PRESSURE PRINCIPLE ASSEMBLY(S) SHALL BE INSTALLED PER THE UDACS PLATE No. 8. NO WATER SHALL BE TAKEN FROM A SERVICE REQUIRING BACKFLOW PREVENTION UNTIL THE REDUCED PRESSURE PRINCIPLE ASSEMBLY HAS BEEN SUCCESSFULLY TESTED BY THE LVWD. ANY BLOCK WALL OR OTHER FENCE MATERIAL SHALL BE DESIGNED AND CONSTRUCTED AROUND THE OUTSIDE OF THE EASEMENT(S) TO ALLOW THE DISTRICT DIRECT ACCESS FROM THE ADJACENT RIGHT-OF-WAY. EASEMENTS SHALL BE CLEARLY MARKED OR STAKED PRIOR TO THE START OF CONSTRUCTION.

!! DANGER !!
HIGH PRESSURE GAS MAIN
GAS DATA SHOWN HEREON IS APPROXIMATE ONLY. CONTRACTOR IS REQUIRED TO VERIFY LINE LOCATIONS PRIOR TO COMMENCING ANY CONSTRUCTION ACTIVITIES WITHIN OWENS AVENUE.
CONTRACTOR IS ALSO REQUIRED TO PROVIDE ENGINEER AND SOUTHWEST GAS CORPORATION WITH 48-HOUR PRIOR NOTICE OF INTENT TO COMMENCE ANY EXCAVATION OPERATIONS ABOVE OR BELOW GAS MAINS.
CALL BEFORE YOU DIG
USA UNDERGROUND 1-800-227-2600
SOUTHWEST GAS (702) 365-1100
L.R. NELSON (702) 798-7978

WATER CONSTRUCTION NOTES

1. INSTALL FIRE HYDRANT ASSEMBLY (INCL. TEE, VALVE, LATERAL, RISER, THRUST BLOCKS, AND ALL ASSORIED HARDWARE) PER UDACS PLATE 40
2. INSTALL BLUE REFLECTIVE RAISED PAVEMENT MARKERS AT FIRE HYDRANTS
3. INSTALL 10" GATE VALVE UDACS PLATE 30 & 39
4. INSTALL 4" 90° BEND
5. INSTALL 10" PVC DOMESTIC WATER PROVIDE 42" COVER ABOVE TOP OF PIPE BASED ON FG UDACS 17 & 19
6. INSTALL 10" TAPPING SLEEVE AND 10" TAPPING VALVE PER UDACS PLATE 34 SECTION 2.24.01A
7. INSTALL 2" METER UDACS PLATE 4
8. INSTALL 2" RPDA UDACS PLATE 8
9. INSTALL 10" RPDA UDACS PLATE 59 MUST USE MATTS, 909 MODEL
10. INSTALL 10"x10" TEE UDACS PLATE 31
11. INSTALL 12" 90° BEND UDACS PLATE 31
12. INSTALL 2" SERVICE SADDLE PER UDACS PLT 4
13. INSTALL 10" 45° BEND UDACS PLATE 31
14. INSTALL 10"x8" TEE UDACS PLATE 31
15. INSTALL 6" PVC FIRE WATER PROVIDE 42" COVER ABOVE TOP OF PIPE BASED ON FG UDACS 17 & 19
16. INSTALL 12" 45° BEND UDACS PLATE 31
17. INSTALL 12" PVC DOMESTIC WATER PROVIDE 42" COVER ABOVE TOP OF PIPE BASED ON FG UDACS 17 & 19
18. INSTALL 12" GATE VALVE UDACS PLATE 30 & 39
19. INSTALL 12"x10" REDUCER UDACS PLATE 30
20. INSTALL WATER CROSSING PER DETAIL 16 SHEET 7 AND PER UDACS PLATE 22 AND 23
21. INSTALL 10"x8" TEE UDACS PLATE 31

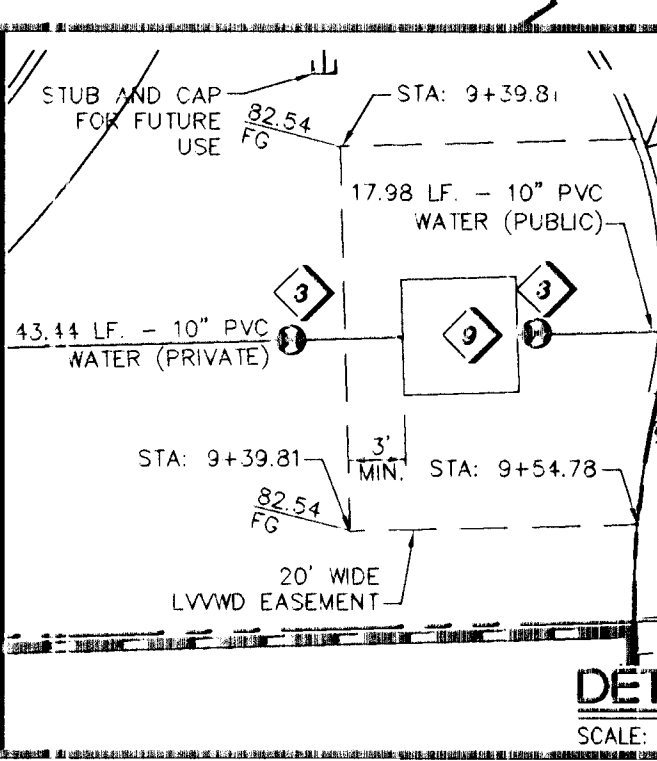
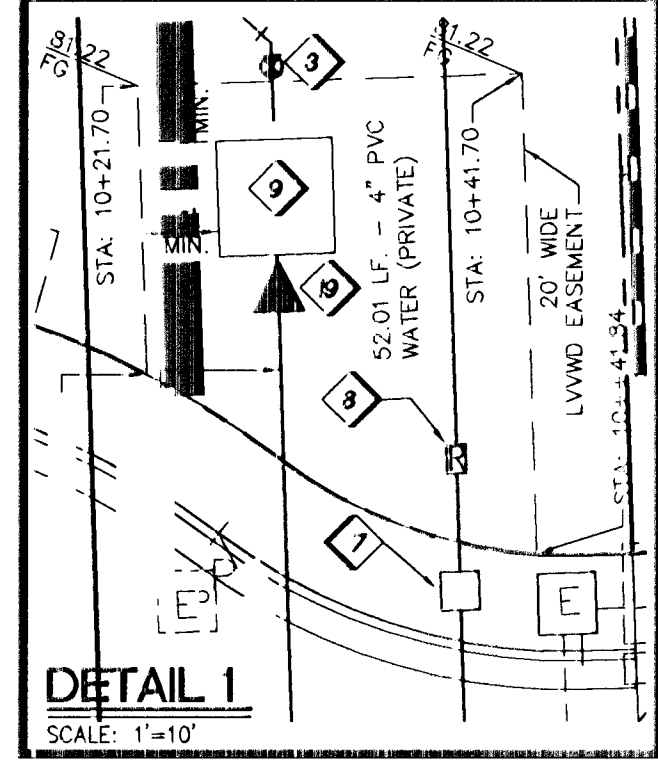
SEWER MANHOLE SCHEDULE

SSMH	RIM ELEV	NORTHING & EASTING	INVERT IN	INVERT OUT	SIZE	REF. STD
1	2583.5±	N 10543.20 - E 9619.31	TERMINAL SSMH	2575.37	48" TYPE I	SD-1
2	2583.5±	N 10288.33 - E 9627.37	2573.74	2573.54	48" TYPE I	SD-1
3	2581.0±	N 9952.8363 - E 9637.9779	2571.73	THRU 2571.53	48" TYPE I	SD-1
4	2584.4±	N 10193.46 - E 9484.93	TERMINAL SSMH	2878.30	48" TYPE I	SD-1
5	2584.6±	N 10285.55 - E 9539.42	2575.91	2575.71	48" TYPE I	SD-1
EXIST. A	(2581.7±)	N 9952.6266 - E 9629.1396	TERMINAL SSMH	(2571.74)	48" TYPE I	SD-1
EXIST. B	(2574.0±)	N 9958.7474 - E 9887.2015	N/A	(THRU 2555.08)	48" TYPE I	SD-1
EXIST. C	(2570.7±)	N 9996.38 - E 9355.99	N/A	(THRU 2563.90)	48" TYPE I	SD-1

SEWER CONTRIBUTIONS DATA TABLE

PEAK FLOW	AVERAGE DAILY FLOW	MGD	MGD
0.021	0.071	MGD	MGD

BENCHMARK
FOUND NINETEEN AND PLACE IN THE TOP OF CURB AT THE NW CORNER OF WESTCLIFF AND CIMARRON
#009 OLWOOD 2854
777.844 (m) 2551.98 (ft) 2532



SOILS REPORT
GEOTEK, INC. - NEVADA
DATED FEBRUARY 3, 2011
PROJECT No. 10251-LV8
UPDATED: MARCH 12, 2012

APPROVAL
CITY FIRE DEPARTMENT
LAS VEGAS VALLEY WATER DISTRICT ENGINEERING SERVICES MANAGER
DATE 06/24/13 PROJECT No. 117341

DISCLAIMER NOTE
UTILITY LOCATIONS SHOWN HEREON ARE APPROXIMATE ONLY. IT SHALL BE THE CONTRACTOR'S RESPONSIBILITY TO DETERMINE THE EXACT HORIZONTAL AND VERTICAL LOCATION OF ALL EXISTING UNDERGROUND AND OVERHEAD UTILITIES PRIOR TO COMMENCING CONSTRUCTION. NO REPRESENTATION IS MADE THAT ALL EXISTING UTILITIES ARE SHOWN HEREON. THE ENGINEER ASSUMES NO RESPONSIBILITY FOR UTILITIES NOT SHOWN OR UTILITIES NOT SHOWN IN THEIR PROPER LOCATION.

Call before you Dig
Avoid cutting underground utility lines. It's costly.
Call 811
1-800-227-2600
CLARK COUNTY TRAFFIC OPERATIONS
1-702-455-7544

Avoid overhead power line contact
Call before you dig
1-702-227-2929
NEVADA POWER ENVIRONMENT AND SAFETY SERVICES DEPARTMENT

Call before you Dig
Underground
1-702-455-7511
CLARK COUNTY TRAFFIC OPERATIONS
1-702-455-5300
LAS VEGAS AREA COMPUTERIZED TRAFFIC SYSTEM

APPRO BY DATE APPRO

REV No. REVISION DESCRIPTION

NEVADA HAND.
240 EAST WASHINGTON ROAD SUITE 101
LAS VEGAS, NV 89101
(702) 798-7978 CONTACT: ROBERT REBBIAN

L.R. NELSON CONSULTING ENGINEERS, INC.
1000 S. RAY BLVD. SUITE 200
LAS VEGAS, NV 89105
(702) 798-7978 CONTACT: ROBERT REBBIAN

UTILITY PLAN 2
and PUBLIC STREET LIGHTING

WESTCLIFF PINES 2
ROLAND WILEY ROAD and SILVER SKY DRIVE
CITY OF LAS VEGAS, NEVADA

DESIGNED BY: MSV 1/2
CHECKED BY: RT
PROJECT NO.: 117341
SCALE: 1"=20'
SHEET 9 of 20 SHEETS
CLV DRAWING NO. 10251-282-2