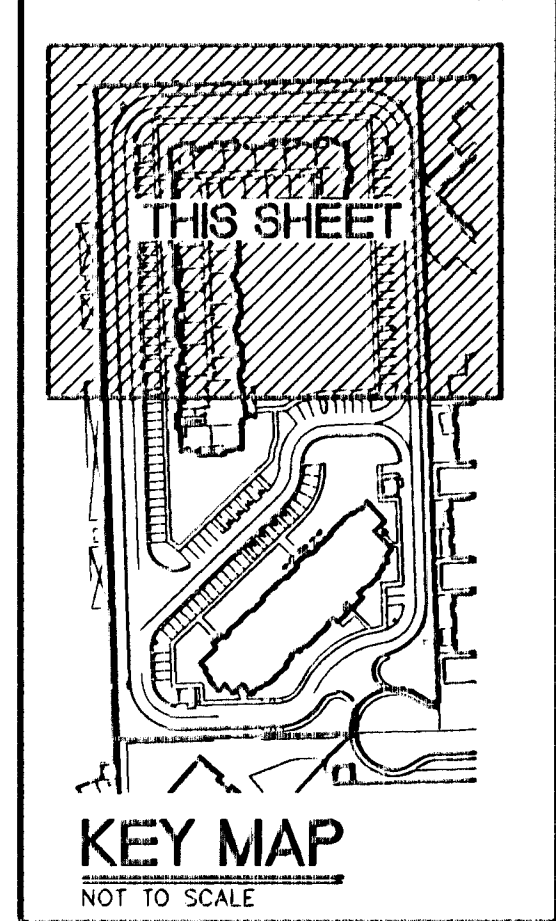
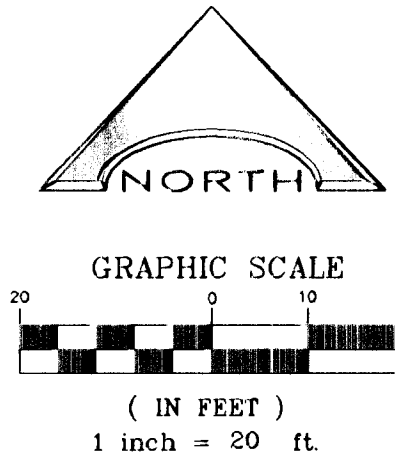


**SUMMERLIN PARKWAY**  
NO DIRECT VEHICULAR ACCESS IS ALLOWED FROM THE SITE ONTO SUMMERLIN PARKWAY



**SOILS REPORT**  
GEO/TEK, INC. - NEVADA  
DATED FEBRUARY 3, 2011  
PROJECT No. 10251-LV6  
UPDATED: MARCH 12, 2012

- CONSTRUCTION NOTES**
- CONSTRUCT 5' WIDE CONCRETE SIDEWALK PER U.S.D. DWG. #234
  - CONSTRUCT 2' CURB TRANSITION PER DETAIL 3, SHEET D11
  - CONSTRUCT 3' VALLEY GUTTER PER DETAIL 8, SHEET D11
  - CONSTRUCT SIDEWALK UNDERDRAIN PER DETAIL 8, SHEET D11
  - MIN. 5' LANDINGS SHALL BE INSTALLED AT ALL DOORS PER ANSI/ICC A117.1 2009 404.2.3 (1/4-INCH MAX BELOW THRESHOLD) 2.0% MAX. SLOPE
  - CONSTRUCT COMMERCIAL DRIVEWAY PER USD. STD. DWG. No. 225
  - CONSTRUCT "A" TYPE CURB PER DETAIL 2, SHEET D11
  - CONSTRUCT CONCRETE FLUME PER DETAIL 7, SHEET D11
  - CONSTRUCT ASPHALT PER PAVEMENT DETAIL 4, SHEET D11
  - INSTALL CONCRETE BUMPERS PER DETAIL 3, SHEET D11
  - CONSTRUCT "L" TYPE CURB & GUTTER PER USD DWG. #216, AND DETAIL 1 SHEET D11 WHERE LONGITUDINAL SLOPE IS LESS THAN 0.40%, THE FLOW LINE SHALL BE WATER TESTED.
  - CONSTRUCT STEPS AS NEEDED
  - INSTALL HANDICAP SIGNAGE PER I.B.C. 2009 1110 AND ICC A117-1-2009-501
  - CONSTRUCT 8" CONCRETE CROSS GUTTER PER STD. DWG. 228
  - CONCRETE ISLAND NOSE.
  - CONSTRUCT DRAINAGE SWALE @ 1.0% MIN.
  - RAMP @ 1:12 MAX. (TYP.) 8.33%
  - CONSTRUCT DEPRESSED CURB PER DETAIL 5, SHEET D11
  - INSTALL ADA HAND RAILING PER ADA AND ICC STANDARDS
  - CONSTRUCT SIDEWALK RAMPS USING ARMOR TILE TRUNCATED DOMES OR EQUIVALENT PER CCAUSD No. 235 (CASE I)
  - NOT USED
  - OFFSITE AC SHALL BE 3" ASPHALT OVER 4" TYPE II
  - STORM DRAIN INLET TO BE CONSTRUCTED AND MUST COMPLY WITH USDOCA DWG. No. 421 (STORM WATER QUALITY MANAGEMENT STAMP AND SIGN DETAIL) ALSO REFER TO DETAIL 13, 14 AND 15 ON SHEET D12
  - TRASH ENCLOSURE REFER TO ARCHITECTURAL PLANS FOR ADDITIONAL INFORMATION.
  - ROOF DRAINS, APPROXIMATE LOCATION (TYP.)

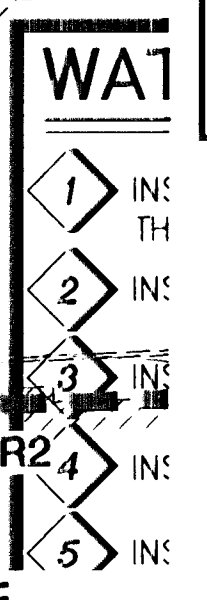
- NOTE:**
- ALL ABOVE GROUND UTILITY APPURTENANCES SHALL CONFORM TO THE REQUIREMENTS OF TITLE 19.08.010
  - FINAL SIDEWALK ELEVATION TO MATCH FINISH FLOOR ELEVATION AFTER FLOORING MATERIAL HAS BEEN PLACED.
  - ALL ONSITE STORM DRAINS AND ASSOCIATED FACILITIES ARE PRIVATELY OWNED AND TO BE PRIVATELY MAINTAINED.

**BASIS OF BEARING**  
NORTH 88°31'18" EAST, BEING THE BEARING OF THE SOUTH LINE OF THE NORTHWEST QUARTER (NW 1/4) OF THE SOUTHEAST QUARTER (SE 1/4) OF THE SOUTHWEST QUARTER (SW 1/4) OF SECTION 28, TOWNSHIP 20 SOUTH, RANGE 60 EAST, M.D.M., AS SHOWN ON A MAP ON FILE IN THE CLARK COUNTY, NEVADA RECORDER'S OFFICE AS FILE 109, PAGE 2 OF PARCEL MAPS.

**FEMA FLOOD PLAIN INFORMATION**  
ACCORDING TO THE FEDERAL EMERGENCY MANAGEMENT AGENCY (FEMA) FLOOD INSURANCE RATE MAP (FIRM) COMMUNITY-PANE NUMBERS 330003 2185, DATED SEPTEMBER 27, 2002, THE SITE IS LOCATED WITHIN A ZONE "X". A ZONE "X" IS DESCRIBED BY FEMA AS AN AREA OUTSIDE OF THE 0.2% ANNUAL CHANCE FLOODPLAIN.

**DEVELOPER**  
NEVADA H.A.N.D.  
235 WARM SPRINGS ROAD SUITE 101  
LAS VEGAS, NEVADA 89119-4212  
TEL: (702) 410-2730 CONTACT: ROBERT FEIBLEMAN

**OWNER**  
WESTCLIFF PINES 2, L.P.  
235 WARM SPRINGS ROAD SUITE 101  
LAS VEGAS, NEVADA 89119-4212  
TEL: (702) 410-2730 CONTACT: ROBERT FEIBLEMAN



**DISCLAIMER NOTE**  
UTILITY LOCATIONS SHOWN HEREON ARE APPROXIMATE ONLY. IT SHALL BE THE CONTRACTOR'S RESPONSIBILITY TO DETERMINE THE EXACT HORIZONTAL AND VERTICAL LOCATION OF ALL EXISTING UNDERGROUND AND OVERHEAD UTILITIES PRIOR TO COMMENCING CONSTRUCTION. NO REPRESENTATION IS MADE THAT ALL EXISTING UTILITIES ARE SHOWN HEREON. THE ENGINEER ASSUMES NO RESPONSIBILITY FOR UTILITIES NOT SHOWN OR UTILITIES NOT SHOWN IN THEIR PROPER LOCATION.

Call before you Dig  
Avoid cutting underground utility lines - costly.

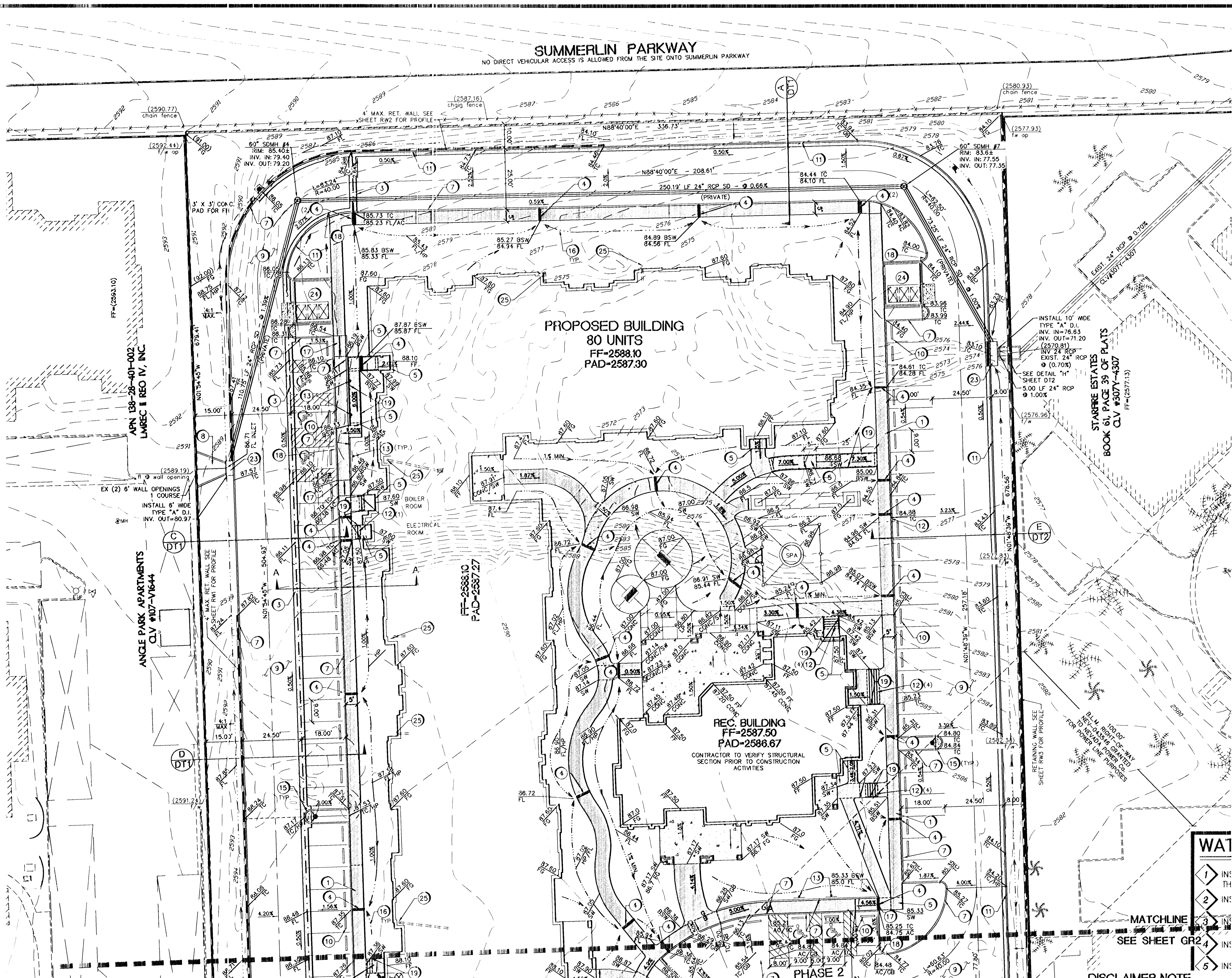
1-800-227-2600  
CLARK COUNTY TRAFFIC OPERATIONS  
1-702-455-7544

Avoid overhead power line contact

1-702-227-2929  
NEVADA POWER ENVIRONMENT AND SAFETY SERVICES DEPARTMENT

Call before you dig  
Avoid hitting underground traffic signal systems and street light systems conduits

1-702-455-7511  
CLARK COUNTY TRAFFIC OPERATIONS  
1-702-432-5300  
LAS VEGAS AREA COMPUTERIZED TRAFFIC SIGNAL

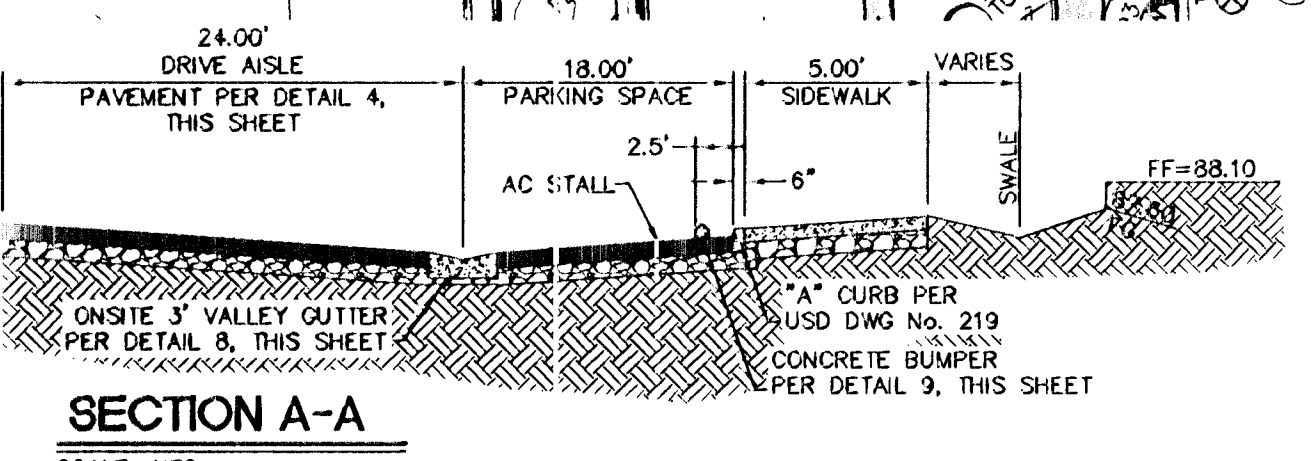


**BENCHMARK**  
FOUND RIVET AND PLATE IN THE TOP OF CURB AT THE NW CORNER OF WESTCLIFF AND CIMARRON #909 04.000 2854 777.844 (m) 2551.98 (ft)  
WE CERTIFY THAT THIS GRADING PLAN IS IN CONFORMANCE WITH THE COUNTY BUILDING CODE AND SHOULD NOT BE USED FOR BIDDING PURPOSES. THIS QUANTITIES DOES NOT INCLUDE OVER EXCAVATION, UTILITY TRENCHING, FOUNDATIONS, OR WALL TRENCHING; ALL CONTRACTORS ARE RESPONSIBLE FOR THEIR OWN QUANTITIES.  
VERNON R. HARKINS P.E. NO. 009898 DATE 6/21/13

**ENGINEER'S OPINION OF CUT AND FILL QUANTITIES**

TOTAL	RAW CUT	18,101	CUBIC YARDS
	RAW FILL	17,736	CUBIC YARDS
	RAW NET CUT	305	CUBIC YARDS

NOTE: THIS OPINION OF CUT & FILL QUANTITIES IS PROVIDED AS REQUIRED BY THE CLARK COUNTY BUILDING CODE AND SHOULD NOT BE USED FOR BIDDING PURPOSES. THIS QUANTITIES DOES NOT INCLUDE OVER EXCAVATION, UTILITY TRENCHING, FOUNDATIONS, OR WALL TRENCHING; ALL CONTRACTORS ARE RESPONSIBLE FOR THEIR OWN QUANTITIES. ALL GRADING SHALL CONFORM TO RECOMMENDATIONS OF THE SOILS ENGINEER AS CONTAINED IN THE GEOTECHNICAL EVALUATION REPORTS PREPARED BY GEO/TEK, INC. NEVADA, DATED FEBRUARY 3, 2011, PROJECT No. 10251-LV6, UPDATED MARCH 12, 2012



APPRO BY DATE APPRO

REV NO. REVISION DESCRIPTION

**NEVADA H.A.N.D.**  
235 EAST WARM SPRINGS ROAD SUITE 101  
LAS VEGAS, NEVADA 89119-4212  
TEL: (702) 739-3345 CONTACT: ROBERT FEIBLEMAN

**L.R. NELSON CONSULTING ENGINEERS, INC.**  
6765 West Russell Road Suite 200  
Las Vegas, NV 89128  
(702) 431-2206 FAX

**GRADING PLAN 1**

**WESTCLIFF PINES 2**  
FOLAND WILEY ROAD and SILVER SKY DRIVE  
CITY OF LAS VEGAS, NEVADA

DRAWN BY: MGY '12

DESIGNED BY: MGY '12

CHECKED BY: MGY '12

PROJECT NO: 818-021-113

SCALE: 1" = 20'

SHEET  
4 OF 20 SHEETS  
CLV DRAWING NO.  
10215282-2