

- CONSTRUCTION NOTES**
- USD STANDARD DRAWING REFERENCE SHOWN ON SHEET C-04
- (2) CONSTRUCT CONCRETE SIDEWALK
 - (4) CONSTRUCT "L" TYPE CURB & GUTTER
 - (9) CONSTRUCT GUTTER TRANSITION
- REMOVALS**
- (12) SAWCUT
 - (15) REMOVE CURB AND GUTTER
 - (16) REMOVE SIDEWALK
- RELOCATIONS**
- (20) ADJUST MANHOLE TO GRADE AND CONSTRUCT CONCRETE COLLAR
 - (21) ADJUST VALVE BOX TO GRADE
 - (22) ADJUST FIRE HYDRANT
 - (23) RELOCATE WATER LINE
 - (24) RELOCATE CONFLICTING ELECTRICAL CONDUIT
 - (25) RELOCATE CONFLICTING TELEPHONE CONDUIT
 - (26) RELOCATE CONFLICTING ST. LIGHT CONDUIT
 - (27) RELOCATE CONFLICTING CABLE TV CONDUIT
 - (28) RELOCATE GAS LINE
- STORM DRAIN/SEWER IMPROVEMENTS**
- (32) CONSTRUCT 6" TYPE "F" DROP INLET
 - (33) CONSTRUCT 18" TYPE "F" DROP INLET
 - (34) CONSTRUCT TYPE I MANHOLE, 60"
 - (35) MODIFY MANHOLE
 - (36) MODIFY DROP INLET

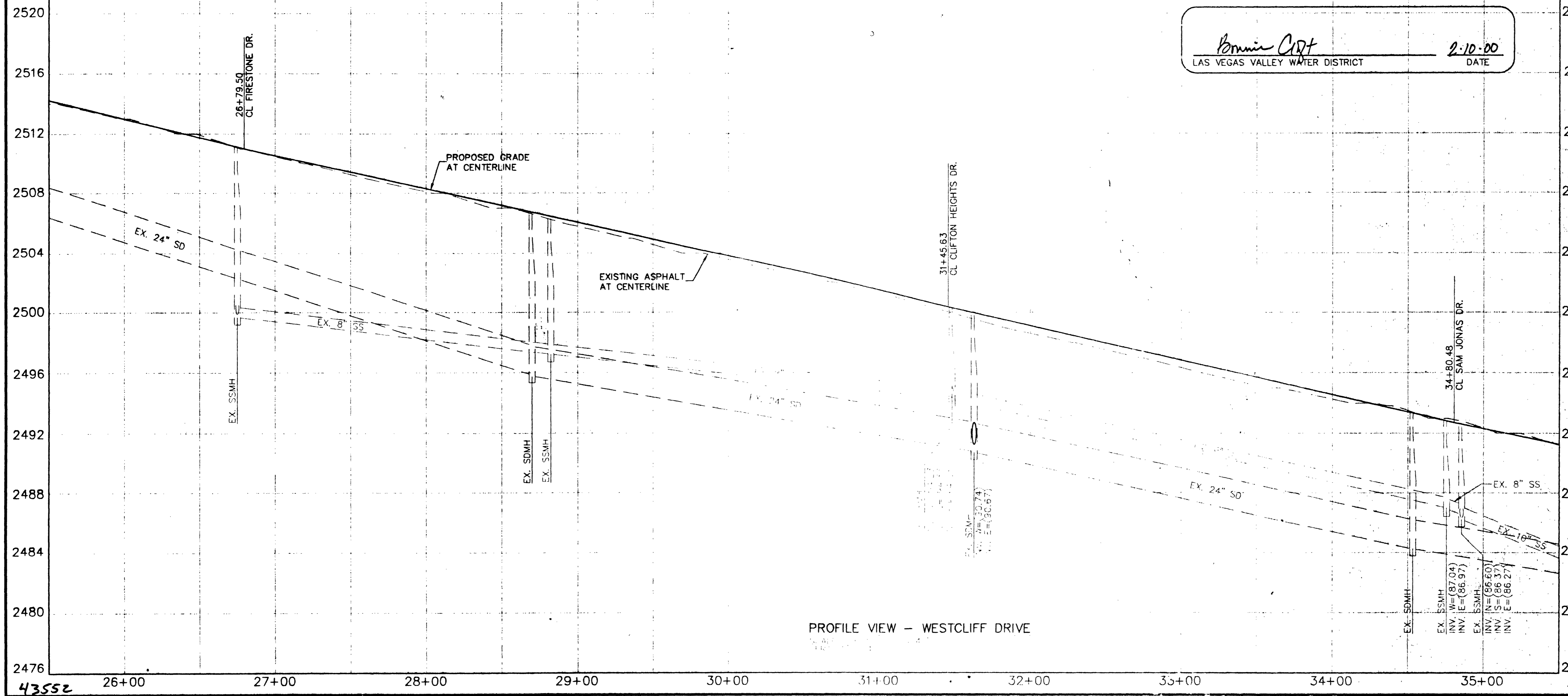
WARNING TO CONTRACTOR:
 AN ABANDONED 12" WATER LINE MAY EXIST ON THE SOUTH SIDE OF WESTCLIFF DRIVE FROM STATION 18+66 TO 34+72, ALONG THE SAME ALIGNMENT AS THE TRAFFIC SIGNAL INTERCONNECT CONDUIT.

LEGEND

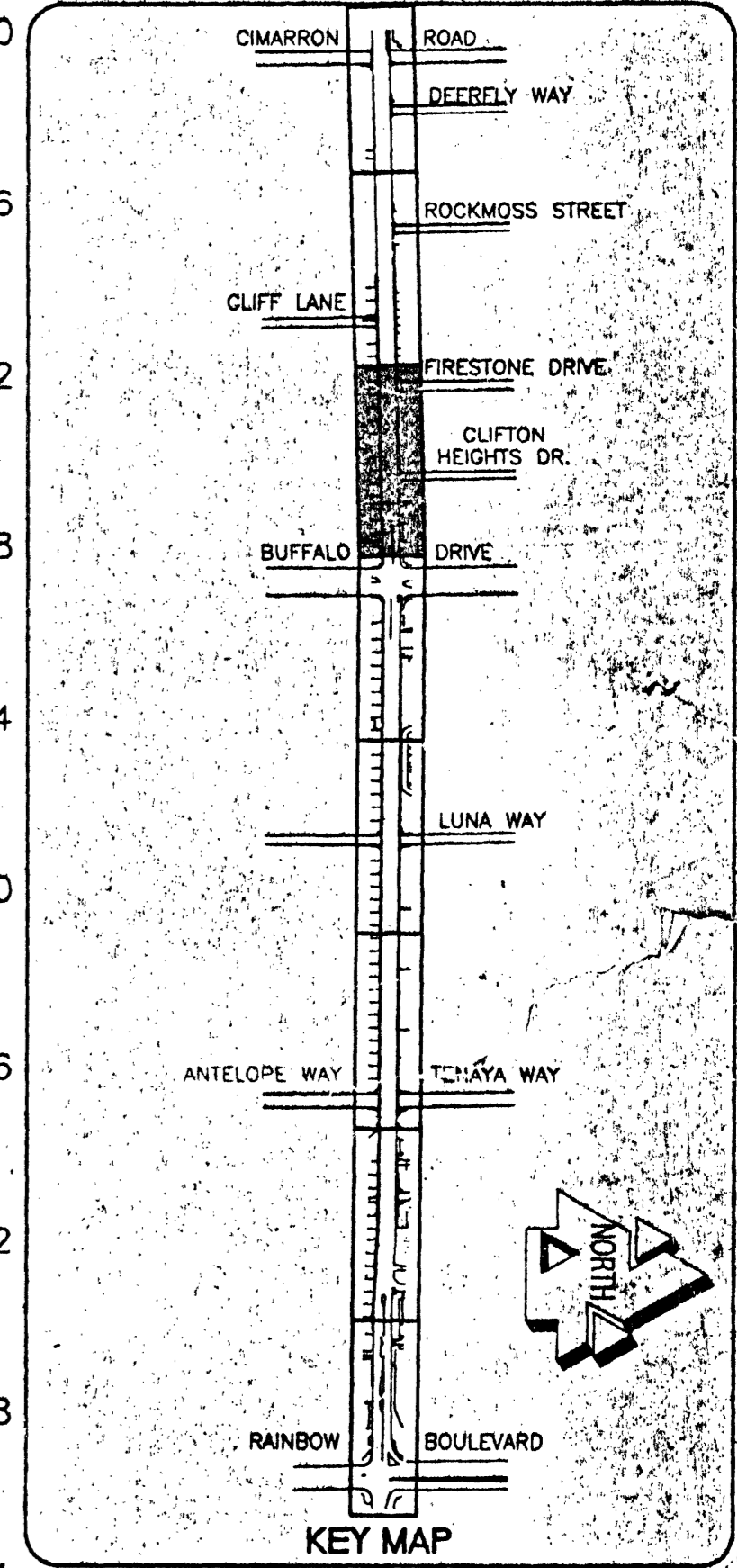
- AC PAVING
- REMOVE & REPLACE SIDEWALK & CURB
- L# (INDICATES LENGTH OF REMOVAL)
- CONCRETE

DATA REFLECTS BACK OF CURB GEOMETRY. (THIS SHEET ONLY)

LINE	LENGTH	BEARING
L1	13.00	N88°45'38"E
L2	25.00	N88°45'38"E



Bonnie Curt
 LAS VEGAS VALLEY WATER DISTRICT
 DATE: 2-10-00



Call before you Dig
 1-800-227-2800
 UNDERGROUND SERVICE (USA)

CALL BEFORE YOU DO OVERHEAD
 1-702-593-6111

PROJ NO: 99202
 DESIGN: KJH/RAS
 DATE: 02/10/00
 SCALE: AS SHOWN
 CADFILE: WC_U03

ACEP
 3320 NORTH BUFFALO DRIVE, SUITE 106
 LAS VEGAS, NV 89121
 TEL: (702) 368-4444 FAX: (702) 368-3750
 E-MAIL: admin@acep-nv.com

WESTCLIFF DRIVE
 CIMARRON ROAD TO SAM JONAS BLVD
 UTILITY PLAN & PROFILE
 25+50 TO 35+50

SHEET
U-03
 26 OF 47 SHEETS

DRAWING NO.
107-V3099

